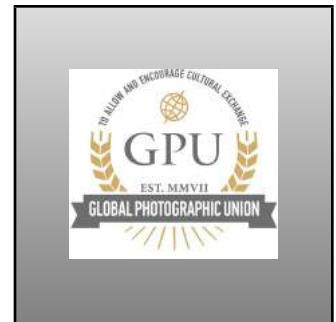


**2020 S4C INTERNATIONAL EXHIBITION OF PHOTOGRAPHY
WHISPERING PALMS JUDGING**



**2020 S4C International Exhibition of Photography
Whispering Palms Judging**

OUR 55TH YEAR!

NATURE CATALOG

Sponsored by the Southern California Council of Camera Clubs

Recognized by the Photographic Society of America

Licensed by the Global Photographic Union

IMPORTANT NOTE

**Use thumbnails on left and up/down arrow keys
to navigate through the Catalog**

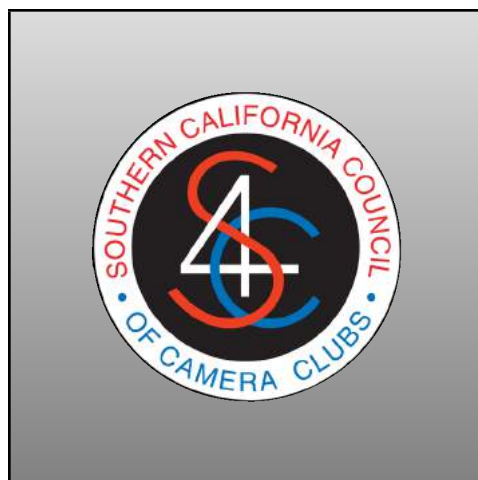
WEBSITE

<https://www.s4c-ex.org/>

COPYRIGHT

All copyrights in all posted images accessible through this catalog remain vested with the original authors (makers) of these images. All use, copying, or republishing of any image without permission of the author is prohibited except for downloading these images directly from this document or website for purposes of viewing.

2020 S4C INTERNATIONAL EXHIBITION OF PHOTOGRAPHY WHISPERING PALMS JUDGING



Nature Catalog

Whispering Palms Judging

EXHIBITION COMMITTEE

General Chair: Stuart Lynn, HonPSA, QPSA, HonS4C, DFS4C

Vice Chair: Diane Racey, FPSA, GMPSA, HonS4C, DFS4C

Assistance: Christine Wilkins, David Wilkins

JUDGES

LIN CRAFT, FPSA, FSCACC

PIERLUIGI RIZZATO, MFIAP, EFIAP/D3, ESFIAP

JILL SNEESBY, APSA, MFIAP, ESFIAP, HON MPSSA, FPSSA(DUX)

IMPORTANT NOTE

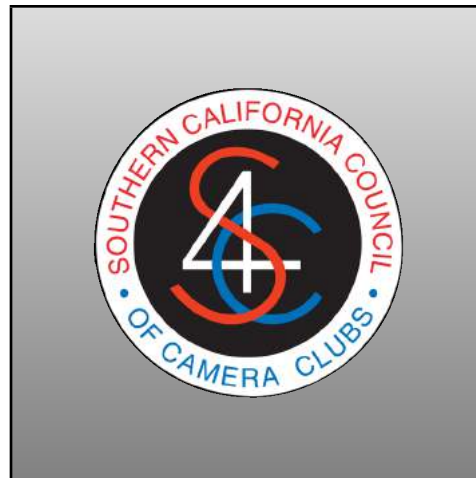
**Download and save to local computer or mobile device
and open with Acrobat.**

**Use bookmarks on left and up/down arrow keys
to navigate through the Catalog.**

COPYRIGHT

All copyrights in all posted images accessible through this catalog remain vested with the original authors (makers) of these images. All use, copying, or republishing of any image without permission of the author is prohibited except for downloading these images directly from this document or website for purposes of viewing.

2020 S4C INTERNATIONAL EXHIBITION OF PHOTOGRAPHY WHISPERING PALMS JUDGING



2020 S4C International Exhibition

Recognized by the
Photographic Society of America

Licensed by the
Global Photographic Union

The sponsors of this International Exhibition of Photography have been awarded Recognition by PSA, the world's largest patron of international photographic exhibitions. PSA, although it has provided Recognition, is neither a sponsor nor directly involved in the operation of this exhibition. Valid acceptances received by PSA Members in recognized sections of this exhibition are eligible for PSA Star Ratings, listing in the world-wide PSA Who's Who of Photography and credited towards the PSA Distinctions of QPSA, PPSA, EPSA, MPSA, MPSA2, GMPSA, GMPSA/B, GMPSA/S, GMPSA/G, and GMPSA/P.



PSA is a non-profit organization promoting the advancement of photography in all its forms to novice, amateur and professional photographers world wide.

For information on membership and the many services and activities of PSA contact:

psa
PHOTOGRAPHIC SOCIETY OF AMERICA
8241 S. Walker Avenue, Suite 104
Oklahoma City, OK 73139-9401, U.S.A.
E-mail: hq@psa-photo.org
Web Site: <http://www.psa-photo.org>



GLOBAL PHOTOGRAPHIC UNION - GPU (former UPI)

is a worldwide interactive organization for anyone interested in photography, be they casual, serious amateurs or professional photographers.

Founded in Gairle, The Netherlands, September 2007, GPU brings together professional and amateur enthusiasts of all ages and levels of achievement. As a nonprofit organization, its mission is to promote and enhance the art and science of photography in all its phases.

Individual members are offered a wide variety of activities: photo and digital competitions, photo exhibitions in different countries, study groups via mail, web site access, photo books, magazines, Photo festivals, distinctions, titles, and a raft of other activities.

Have look on the site: www.gpuphoto.com

PSA: 2020-5408

GPU: L200124-M1G

2020 S4C INTERNATIONAL EXHIBITION OF PHOTOGRAPHY WHISPERING PALMS JUDGING

General Chair: Stuart Lynn, HonPSA, QPSA, HonS4C, DFS4C
Vice Chair: Diane Racey, FPSA, GMPSA, HonS4C, DFS4C



JUDGES

LIN CRAFT, FPSA, FSCACC
PIERLUIGI RIZZATO, MFIAP, EFIAP/D3, ESFIAP
JILL SNEESBY, APSA, MFIAP, ESFIAP, HON MPSSA, FPSSA(DUX)

Image No.

SECTION 1 - NATURE: GENERAL

PSA BEST OF SHOW GOLD	
GUEK CHENG LIM (MALAYSIA): "CURVE 5"	100
S4C GOLD - BEST PARENT-OFFSPRING INTERACTION	
JERRY FENWICK (USA): "GREBE OFFERING CHICK FEATHER 2"	47
S4C SILVER	
JERRY FENWICK (USA): "HERON GREETED BY FAMILY 2"	48
S4C SILVER	
YUIMANS HSIONG (USA): "CRANES ENJOYING MORNING WALKING"	79
S4C BRONZE	
TIN SANG CHAN (CANADA): "YELLOW-THROATED EUPHONIA"	26
S4C BRONZE	
GEORGE HUTCHISON (USA): "MONO LAKE WINDOW"	82
S4C BRONZE	
PHILLIP KWAN (CANADA): "AURORA 25"	92
JUDGE'S CHOICE	
MARY CROUCH (USA): "LOVE HURTS"	33
JUDGE'S CHOICE	
GUEK CHENG LIM (MALAYSIA): "RAINING"	105
JUDGE'S CHOICE	
JIONGXIN PENG (NEW ZEALAND): "BIRD ISLAND"	127

SECTION 2 - NATURE: WILDLIFE

PSA BEST OF SHOW GOLD	
NAN CARDER (USA): "KIT FOX 7093"	17
S4C GOLD	
J.R. SCHNELZER (USA): "HERON WITH NESTING MATERIAL"	143
S4C SILVER	
GUEK CHENG LIM (MALAYSIA): "PINK 2"	102
S4C SILVER	
STEVE SMITH (CANADA): "TANGLED UP"	159
S4C BRONZE	
VIKI GAUL (CANADA): "EGRET ON A MISSION 0999"	56
S4C BRONZE	
KOSHY JOHNSON (ENGLAND): "BLACK HEADED IBIS AND SNAKE"	83
S4C BRONZE	
CHRISTINE PENCE (USA): "BEAR SNUGGLE"	125
JUDGE'S CHOICE	
NAN CARDER (USA): "HARLEQUIN 7351"	16
JUDGE'S CHOICE	
BETTY CHAN (CANADA): "ARCTIC FOX FIGHTING"	19
JUDGE'S CHOICE	
YANRU SHEN (CHINA): "PENGUIN WORLD 3"	150

2020 S4C INTERNATIONAL EXHIBITION OF PHOTOGRAPHY

WHISPERING PALMS JUDGING



NATURE ACCEPTANCES INDEX

NG = NATURE GENERAL : NW = NATURE WILDLIFE



	Image No		Image No
ARKHIPOV, DMITRY, EPSA (RUSSIAN FEDERATION)			
NG "GRIZZLY BEAR 24" .	10	NW "POLAR BEAR FAMILY 3" .	11
BROWN, DONALD, APSA, EPSA (USA)			
NW "CAROLINA ANOLE PORTRAIT 8334" .	12	NW "HUNTING ANOLE 8345" .	13
CARDER, NAN, FPSA, GMPSA (USA)			
NG "ELEPHANT SEALS 8863" .	14	NG "GREAT BLUE HERON 7525" .	15
NW "HARLEQUIN 7351" Judge's Choice.	16	NW "KIT FOX 7093" PSA Best of Show Gold.	17
CARSON, ELOISE (USA)			
NW "YELLOWSTONE BISON" .	18		
CHAN, BETTY (CANADA)			
NW "ARCTIC FOX FIGHTING" Judge's Choice.	19		
CHAN, H.W., FPSA, GMPSA/S (HONG KONG)			
NW "POLAR BEAR N26" .	20		
CHAN, TIN SANG (CANADA)			
NG "EASTERN BLUE BIRD FEEDING" HM.	21	NW "FEED ME (EASTERN BLUE BIRD)" HM.	22
NG "FIERY BILLED ARACARI" .	23	NW "GREAT HORNED OULET" .	24
NW "SNOW MONKEY" .	25	NG "YELLOW-THROATED EUPHONIA" S4C Bronze.	26
CHEANG, SHERMAN (MACAU)			
NG "FLAMINGOS" HM.	27	NG "HUNGRY BIRD" .	28
NG "I JUMP FIRST" .	29		
CHIU, BOB, EPSA (CHINA)			
NG "POLAR BEAR27" HM.	30		
CROUCH, MARY (USA)			
NW "ATTACKING THE KING" .	31	NW "LAST GASP" .	32
NG "LOVE HURTS" Judge's Choice.	33	NW "THE ONE THAT GOT AWAY" .	34
DAVIS, ROBERT, EPSA (USA)			
NW "ENJOYING A DIP IN THE POND" .	35		
DEDONATO, DONALD, EPSA (USA)			
NG "INTENSE SNOWY OWL" .	36	NG "SCHWABACHER'S BEAVER POND" .	37
DEVINE, BOB, MPSA2 (ENGLAND)			
NG "LIONESSE SCOLDS CUB" .	38	NW "MALE KESTREL PLUCKS" HM.	39
EMMERICH JR, GERALD H, HONFPSA, GMPSA/B (USA)			
NG "LEAPING NUTHATCH" .	40	NW "TEETH BARED IN BROOKS RIVER" .	41
NG "WAITING FOR A KING" HM.	42		
ENGLISH, IAN (AUSTRALIA)			
NG "CLOSE INSPECTION" .	43		
FARLOW, CHARLOTTE, PPSA (USA)			
NG "PIT VIPER #4" .	44		

(may be continued on next page)

2020 S4C INTERNATIONAL EXHIBITION OF PHOTOGRAPHY

WHISPERING PALMS JUDGING



NATURE ACCEPTANCES INDEX

NG = NATURE GENERAL : NW = NATURE WILDLIFE

Image No

Image No

FENWICK, JERRY, EPSA (USA)

NG "GREBE ENTERS NEST" HM.	45	NW "GREBE OFFERING CHICK FEATHER" .	46
NG "GREBE OFFERING CHICK FEATHER 2" S4C Gold - Best Pair		NG "HERON GREETED BY FAMILY 2" S4C Silver.	48
NW "ROBIN CHICKS CRY FOR WORMS" .	49	NG "ROBIN FEEDS CHICK" .	50

FIGUCCIO, ALBERT (USA)

NG "HOVER LANDING" .	51
----------------------	----

FISHER, STEVEN, FPSA, GMPA (USA)

NG "BULBTIP PROTECTION_AMPHIPRION_INDOR" .	52	NG "HARLEQUIN SHRIMP ON 6 ARM" .	53
--	----	----------------------------------	----

FRIEDMAN, STEVEN (USA)

NG "LATE AFTERNOON IN THE ALABAMA HILLS" .	54
--	----

GAUL, VIKI, APSA, PPSA (CANADA)

NG "EGRET LANDING GEAR 4856" .	55	NW "EGRET ON A MISSION 0999" S4C Bronze.	56
NW "EGRET PASSION ON DISPLAY" .	57	NG "PLACING THE FIRST STICK 4170" .	58
NG "TRI COLOURED WITH STICK 0728" .	59	NG "WOODSTOCK LANDING 0524" HM.	60

GRAY, LEAH (CANADA)

NG "CHAMELEON GRIN" .	61	NG "FOLLOW THE LEADER" .	62
NW "GREETINGS" .	63	NG "LEARNING TO STALK" .	64
NW "MUSHROOM LUNCH" .	65	NG "STEP CAREFULLY" .	66

HADFIELD, CHRISTINE (ENGLAND)

NG "BISON BABY" .	67	NG "EGYPTIAN GOOSE" .	68
NW "HIPPO YAWN" .	69	NG "PRAIRIE DOGS" HM.	70
NG "VIXEN" .	71		

HENDERSON, DAVID (AUSTRALIA)

NW "BIG SPLASH" .	72	NG "BREACHING 1" .	73
NW "BREAKFAST IS COMING" .	74		

HENNES, MARGARET, PPSA (USA)

NW "AFFECTIONATE GENTOOS" .	75	NG "BEWARE OF INTRUDER" .	76
-----------------------------	----	---------------------------	----

HILL, DENNIS, PPSA (AUSTRALIA)

NW "ROYAL PENGUIN INTERACTION 5" .	77
------------------------------------	----

HSIONG, YOUNG, PPSA (USA)

NW "LOVED KISSING" .	78	NG "CRANES ENJOYING MORNING WALKING" S4C Silver	79
----------------------	----	--	----

HUTCHISON, GEORGE, QPSA (USA)

NG "BIG BEND FALLS" .	80	NG "GORILLA MAMA" .	81
NG "MONO LAKE WINDOW" S4C Bronze.	82		

JOHNSON, KOSHY (ENGLAND)

NW "BLACK HEADED IBIS AND SNAKE" S4C Bronze.	83	NG "GANNET WITH VEGETATION" .	84
NW "LIONESS KILLING WILDEBEEST" .	85		

KING, FRANCIS, GMPA (CANADA)

NG "RED NECK GREBE FEEDING CHICKS" HM.	86
---	----

(may be continued on next page)

2020 S4C INTERNATIONAL EXHIBITION OF PHOTOGRAPHY

WHISPERING PALMS JUDGING



NATURE ACCEPTANCES INDEX

NG = NATURE GENERAL : NW = NATURE WILDLIFE

	Image No		Image No
KLEINDIENST, VALERIE (AUSTRALIA)			
NG "DESERT BEETLES MATING" .	87	NW "IBIS ENJOYING RAIN" .	88
KRAMER, IRENE, EPSA (USA)			
NW "GREAT CRESTED FLYCATCHER" .	89	NG "RACCOON LOVES LUPINE" .	90
KUEBLER, BARBARA, APSA, MPSA (USA)			
NW "WASP ON BORAGE" HM.	91		
KWAN, PHILLIP, GMPSA/G, GPSA (CANADA)			
NG "AURORA 25" S4C Bronze.	92	NW "GREAT GRAY OWL 55" HM.	93
NG "POLAR BEARS AT CARCASS 47" .	94	NW "POLAR HUG 42" .	95
NG "TERN LANDING 75" .	96	NW "TERN RETURN 66" .	97
LIM, GUEK CHENG (MALAYSIA)			
NG "CURVE 2" HM.	98	NG "CURVE 4" HM.	99
NG "CURVE 5" PSA Best of Show Gold.	100	NW "FACE TO FACE 9" HM.	101
NW "PINK 2" S4C Silver.	102	NW "PLAYFUL 14" .	103
NW "PLAYFUL 32" HM.	104	NG "RAINING" Judge's Choice.	105
LUO, ROBIN (CANADA)			
NG "JAPANESE TIT LOVE THE FLOWER" .	106		
MEINBERG, VOLKER, GMPSA/S (GERMANY)			
NG "HELGOLAND GANNETS 2001" .	107	NW "HELGOLAND GANNETS 2006" .	108
NG "HELGOLAND GANNETS 2012" .	109	NG "MELVILLE BAY 33" .	110
MORITZ, VICKI, GMPSA (AUSTRALIA)			
NG "ZABRISKIE POINT SUNSET" .	111		
MOYER, LARRY (USA)			
NG "ASSASSIN BUG WITH PREY 17" .	112		
NEWMAN, KATHRYN (USA)			
NG "LAVENDER BEE" .	113	NG "OWLET" .	114
PARKER, CRAIG, MPSA, BPSA (AUSTRALIA)			
NG "AFRICAN WILD DOG TUG OF WAR" .	115	NW "GREY HERON WITH FROG" .	116
NW "LEOPARD MUNCHING ON IMPALA" HM.	117	NG "OXPECKER RUBS HEADS WITH BUFFALO" .	118
NG "WEAVER NEST CONSTRUCTION 02" HM.	119		
PASSUELLO, ELIZABETH, EPSA (NEW ZEALAND)			
NG "DANAUS SP DISCARDS HEAD CAPSULE" .	120	NG "MYCENA PARSONSIAE 6" .	121
PEKS, HEINZ (GERMANY)			
NW "AUSGETROCKNET" .	122	NG "FLIEGENPILZ" .	123
NW "FUTTERPLATZ" .	124		
PENCE, CHRISTINE (USA)			
NW "BEAR SNUGGLE" S4C Bronze.	125	NW "PREENING TOGETHER" .	126
PENG, JIONGXIN, PPSA (NEW ZEALAND)			
NG "BIRD ISLAND" Judge's Choice.	127	NG "WATERFALL IN THE HILL" .	128

(may be continued on next page)

2020 S4C INTERNATIONAL EXHIBITION OF PHOTOGRAPHY

WHISPERING PALMS JUDGING



NATURE ACCEPTANCES INDEX

NG = NATURE GENERAL : NW = NATURE WILDLIFE

	Image No		Image No
PRISLIPSKY, SHARON, APSA, PPSA (USA)			
NG "FISH FOR BREAKFAST" .	129		
REYBURN, MICHAEL (USA)			
NW "BIRD ON TREE BRANCH" .	130		
ROBERTS, LILLIAN (USA)			
NW "ELK BATTLE 2017 01" .	131	NW "GBH NESTBUILDING PAIR 05" .	132
NG "PALLID BAT DRINKING 02" .	133	NW "ROADRUNNER FOOD FIGHT 01" .	134
NG "YOUNG CHEETAS AT REST 01" .	135		
ROSENGREN, ERIK, FPSA, PPSA (USA)			
NW "CUSTOM MADE BED-AM ALLIGATOR" .	136	NW "TRANSPORTING HER CHICK-BLK SHIMMER" .	137
NG "WHATS THAT MOM-BLACK SKIMMERS" .	138		
SANDBOTHE, MARIAN (USA)			
NG "CRAB WITH FOOD" .	139	NW "IGUANA WARNING" .	140
SAVAGE, TOM, APSA, MPSA2 (USA)			
NW "GRIZZLY CATCHES A CHUM" .	141		
SCHNELZER, J.R., FPSA, EPSA (USA)			
NG "BULL FROG" .	142	NW "HERON WITH NESTING MATERIAL" S4C Gold.	143
NW "LONG NOSE BAT DRINKING" .	144		
SCHWEDEN, WOLFGANG, GMPSA/S (GERMANY)			
NW "CANADA GOOSE 1" .	145		
SCIFRES, PETER, GPSA (USA)			
NG "MOM AND THREE CUBS" .	146	NG "NEOWISE OVER RED ROCKS" HM.	147
SHEN, YANRU (CHINA)			
NG "LEAVE" .	148	NG "MOM AND CUB 5" .	149
NW "PENGUIN WORLD 3" Judge's Choice.	150	NW "POLAR BEAR 7" .	151
SINHA, BARUN (INDIA)			
NW "CHEETAH ATTACK" .	152	NW "HYENAS ON AZEBRA KILL" .	153
NG "MIGRATION AT DUSK" HM.	154	NW "POLAR BEAR NO 9999" .	155
NG "POLAR BEAR NO 0575" .	156		
SMITH, STEVE (CANADA)			
NG "GRIZZLY BROTHERS" .	157	NG "LION FLUSHING GUINEA FOWL" .	158
NW "TANGLED UP" S4C Silver.	159	NW "THE WRESTLERS" HM.	160
NG "TWO CHEETAH WITH PREY" .	161		
SOKOLSKAYA, VALENTINA, APSA, EPSA (USA)			
NW "IBIS WITH CRAB" .	162	NW "SPREAD YOUR WINGS" .	163
SOKOLSKY, OLEG, PPSA (USA)			
NG "FOX AT FIREHOLE RIVER" .	164		
SPEAKER, PAUL, PPSA (USA)			
NW "WESTERN GREBES RUSHING-07" .	165		

(may be continued on next page)

2020 S4C INTERNATIONAL EXHIBITION OF PHOTOGRAPHY WHISPERING PALMS JUDGING



NATURE ACCEPTANCES INDEX

NG = NATURE GENERAL : NW = NATURE WILDLIFE



	Image No		Image No
STRICKER, CHARLES (USA)			
NW "BROWN BEAR INTIMIDATES CUB 0541" .	166	NG "GULLS CIRCLE FOR FOOD 0928" .	167
NG "HYENA CARRIES HIDE 3404" .	168		
SUN, SAMUEL (USA)			
NW "PEREGRINE FOOD EXCHANGE #6" .	169	NW "RUSHING CEREMONY" .	170
NG "WHOOPING CRANE WITH WOLFBERRY" .	171		
TO, NGOCAN (USA)			
NG "FOR COZY NEST 1" .	172		
VAUTRIN, INGE, PPSA (USA)			
NW "MISSISSIPPI KITE CHICK" .	173	NW "WHEEL BUG" .	174
WAT, JAMES (USA)			
NG "OLD FAITHFUL GEYSER YELLOWSTONE" .	175		
WILKINS, CHRISTINE (USA)			
NG "PELICAN TAKEOFF" .	176	NG "TWO OSPREY ON THE NEST" .	177
WILKINS, DAVID (USA)			
NG "MOTH ON FLOWER" .	178		
WONG, YUET YEE, PPSA (HONG KONG)			
NG "THE SKY OF NAMIBIA" .	179	NG "TO BE ALERT" .	180
YE, DANLEI, GMPA, SPSA (CANADA)			
NG "SNOW WORLD81" .	181		

(may be continued on next page)

**2020 S4C INTERNATIONAL EXHIBITION OF PHOTOGRAPHY
WHISPERING PALMS JUDGING**



“GRIZZLY BEAR 24”

DMITRY ARKHIPOV, EPSA (RUSSIAN FEDERATION)

Nature General

Image No: 10

**2020 S4C INTERNATIONAL EXHIBITION OF PHOTOGRAPHY
WHISPERING PALMS JUDGING**



"POLAR BEAR FAMILY 3"

DMITRY ARKHIPOV, EPSA (RUSSIAN FEDERATION)

Nature Wildlife

Image No: 11

**2020 S4C INTERNATIONAL EXHIBITION OF PHOTOGRAPHY
WHISPERING PALMS JUDGING**



“CAROLINA ANOLE PORTRAIT 8334”

DONALD BROWN, APSA, EPSA (USA)

Nature Wildlife

Image No: 12

**2020 S4C INTERNATIONAL EXHIBITION OF PHOTOGRAPHY
WHISPERING PALMS JUDGING**



"HUNTING ANOLE 8345"

DONALD BROWN, APSA, EPSA (USA)

Nature Wildlife

Image No: 13



"ELEPHANT SEALS 8863"

NAN CARDER, FPSA, GMPA (USA)

Nature General

Image No: 14

**2020 S4C INTERNATIONAL EXHIBITION OF PHOTOGRAPHY
WHISPERING PALMS JUDGING**



"GREAT BLUE HERON 7525"

NAN CARDER, FPSA, GMPA (USA)

Nature General

Image No: 15



Judge's Choice

"HARLEQUIN 7351"

NAN CARDER, FPSA, GMPA (USA)

Nature Wildlife

Image No: 16

2020 S4C INTERNATIONAL EXHIBITION OF PHOTOGRAPHY
WHISPERING PALMS JUDGING



PSA Best of Show Gold

“KIT FOX 7093”

NAN CARDER, FPSA, GMPA (USA)

Nature Wildlife

Image No: 17

**2020 S4C INTERNATIONAL EXHIBITION OF PHOTOGRAPHY
WHISPERING PALMS JUDGING**



“YELLOWSTONE BISON”

ELOISE CARSON (USA)

Nature Wildlife

Image No: 18

2020 S4C INTERNATIONAL EXHIBITION OF PHOTOGRAPHY
WHISPERING PALMS JUDGING



Judge's Choice

"ARCTIC FOX FIGHTING"

BETTY CHAN (CANADA)

Nature Wildlife

Image No: 19

**2020 S4C INTERNATIONAL EXHIBITION OF PHOTOGRAPHY
WHISPERING PALMS JUDGING**



“POLAR BEAR N26”

H.W. CHAN, FPSA, GMPSA/S (HONG KONG)

Nature Wildlife

Image No: 20

2020 S4C INTERNATIONAL EXHIBITION OF PHOTOGRAPHY
WHISPERING PALMS JUDGING



HM

“EASTERN BLUE BIRD FEEDING”

TIN SANG CHAN (CANADA)

Nature General

Image No: 21

2020 S4C INTERNATIONAL EXHIBITION OF PHOTOGRAPHY
WHISPERING PALMS JUDGING



HM

“FEED ME (EASTERN BLUE BIRD)”

TIN SANG CHAN (CANADA)

Nature Wildlife

Image No: 22

**2020 S4C INTERNATIONAL EXHIBITION OF PHOTOGRAPHY
WHISPERING PALMS JUDGING**



“FIERY BILLED ARACARI”

TIN SANG CHAN (CANADA)

Nature General

Image No: 23

**2020 S4C INTERNATIONAL EXHIBITION OF PHOTOGRAPHY
WHISPERING PALMS JUDGING**



“GREAT HORNED OWELET”

TIN SANG CHAN (CANADA)

Nature Wildlife

Image No: 24

**2020 S4C INTERNATIONAL EXHIBITION OF PHOTOGRAPHY
WHISPERING PALMS JUDGING**



“SNOW MONKEY”

TIN SANG CHAN (CANADA)

Nature Wildlife

Image No: 25

2020 S4C INTERNATIONAL EXHIBITION OF PHOTOGRAPHY
WHISPERING PALMS JUDGING



S4C Bronze

“YELLOW-THROATED EUPHONIA”

TIN SANG CHAN (CANADA)

Nature General

Image No: 26

2020 S4C INTERNATIONAL EXHIBITION OF PHOTOGRAPHY
WHISPERING PALMS JUDGING



HM

“FLAMINGOS”

SHERMAN CHEANG (MACAU)

Nature General

Image No: 27

**2020 S4C INTERNATIONAL EXHIBITION OF PHOTOGRAPHY
WHISPERING PALMS JUDGING**



“HUNGRY BIRD”

SHERMAN CHEANG (MACAU)

Nature General

Image No: 28

**2020 S4C INTERNATIONAL EXHIBITION OF PHOTOGRAPHY
WHISPERING PALMS JUDGING**



"I JUMP FIRST"

SHERMAN CHEANG (MACAU)

Nature General

Image No: 29

**2020 S4C INTERNATIONAL EXHIBITION OF PHOTOGRAPHY
WHISPERING PALMS JUDGING**



HM

“POLAR BEAR27”

BOB CHIU, EPSA (CHINA)

Nature General

Image No: 30



“ATTACKING THE KING”

MARY CROUCH (USA)

Nature Wildlife

Image No: 31



“LAST GASP”

MARY CROUCH (USA)

Nature Wildlife

Image No: 32



Judge's Choice

"LOVE HURTS"

MARY CROUCH (USA)

Nature General

Image No: 33

**2020 S4C INTERNATIONAL EXHIBITION OF PHOTOGRAPHY
WHISPERING PALMS JUDGING**



“THE ONE THAT GOT AWAY”

MARY CROUCH (USA)

Nature Wildlife

Image No: 34

**2020 S4C INTERNATIONAL EXHIBITION OF PHOTOGRAPHY
WHISPERING PALMS JUDGING**



“ENJOYING A DIP IN THE POND”

ROBERT DAVIS, EPSA (USA)

Nature Wildlife

Image No: 35

**2020 S4C INTERNATIONAL EXHIBITION OF PHOTOGRAPHY
WHISPERING PALMS JUDGING**



“INTENSE SNOWY OWL”

DONALD DEDONATO, EPSA (USA)

Nature General

Image No: 36

**2020 S4C INTERNATIONAL EXHIBITION OF PHOTOGRAPHY
WHISPERING PALMS JUDGING**



“SCHWABACHER'S BEAVER POND”

DONALD DEDONATO, EPSA (USA)

Nature General

Image No: 37

**2020 S4C INTERNATIONAL EXHIBITION OF PHOTOGRAPHY
WHISPERING PALMS JUDGING**



"LIONESS SCOLDS CUB"

BOB DEVINE, MPSA2 (ENGLAND)

Nature General

Image No: 38

2020 S4C INTERNATIONAL EXHIBITION OF PHOTOGRAPHY
WHISPERING PALMS JUDGING



HM

“MALE KESTREL PLUCKS”

BOB DEVINE, MPSA2 (ENGLAND)

Nature Wildlife

Image No: 39



"LEAPING NUTHATCH"

GERALD H EMMERICH JR, HONFPSA, GMPSA/B (USA)

Nature General

Image No: 40



“TEETH BARED IN BROOKS RIVER”

GERALD H EMMERICH JR, HONFPSA, GMPSA/B (USA)

Nature Wildlife

Image No: 41

**2020 S4C INTERNATIONAL EXHIBITION OF PHOTOGRAPHY
WHISPERING PALMS JUDGING**



HM

“WAITING FOR A KING”

GERALD H EMMERICH JR, HONFPSA, GMPSA/B (USA)

Nature General

Image No: 42

**2020 S4C INTERNATIONAL EXHIBITION OF PHOTOGRAPHY
WHISPERING PALMS JUDGING**



“CLOSE INSPECTION”

IAN ENGLISH (AUSTRALIA)

Nature General

Image No: 43

**2020 S4C INTERNATIONAL EXHIBITION OF PHOTOGRAPHY
WHISPERING PALMS JUDGING**



"PIT VIPER #4"

CHARLOTTE FARLOW, PPSA (USA)

Nature General

Image No: 44

**2020 S4C INTERNATIONAL EXHIBITION OF PHOTOGRAPHY
WHISPERING PALMS JUDGING**



HM

“GREBE ENTERS NEST”

JERRY FENWICK, EPSA (USA)

Nature General

Image No: 45



"GREBE OFFERING CHICK FEATHER"

JERRY FENWICK, EPSA (USA)

Nature Wildlife

Image No: 46

**2020 S4C INTERNATIONAL EXHIBITION OF PHOTOGRAPHY
WHISPERING PALMS JUDGING**



S4C Gold - Best Parent-Offspring Interaction

"GREBE OFFERING CHICK FEATHER 2"

JERRY FENWICK, EPSA (USA)

Nature General

Image No: 47



S4C Silver

“HERON GREETED BY FAMILY 2”

JERRY FENWICK, EPSA (USA)

Nature General

Image No: 48



“ROBIN CHICKS CRY FOR WORMS”

JERRY FENWICK, EPSA (USA)

Nature Wildlife

Image No: 49

**2020 S4C INTERNATIONAL EXHIBITION OF PHOTOGRAPHY
WHISPERING PALMS JUDGING**



"ROBIN FEEDS CHICK"

JERRY FENWICK, EPSA (USA)

Nature General

Image No: 50

**2020 S4C INTERNATIONAL EXHIBITION OF PHOTOGRAPHY
WHISPERING PALMS JUDGING**



"HOVER LANDING"

ALBERT FIGUCCIO (USA)

Nature General

Image No: 51



“BULBTIP PROTECTION_AMPHIPRION_IND0”

STEVEN FISHER, FPSA, GMP SA (USA)

Nature General

Image No: 52

**2020 S4C INTERNATIONAL EXHIBITION OF PHOTOGRAPHY
WHISPERING PALMS JUDGING**



"HARLEQUIN SHRIMP ON 6 ARM"

STEVEN FISHER, FPSA, GMPSA (USA)

Nature General

Image No: 53

**2020 S4C INTERNATIONAL EXHIBITION OF PHOTOGRAPHY
WHISPERING PALMS JUDGING**



“LATE AFTERNOON IN THE ALABAMA HILLS”

STEVEN FRIEDMAN (USA)

Nature General

Image No: 54

**2020 S4C INTERNATIONAL EXHIBITION OF PHOTOGRAPHY
WHISPERING PALMS JUDGING**



“EGRET LANDING GEAR 4856”

VIKI GAUL, APSA, PPSA (CANADA)

Nature General

Image No: 55

2020 S4C INTERNATIONAL EXHIBITION OF PHOTOGRAPHY
WHISPERING PALMS JUDGING



S4C Bronze

"EGRET ON A MISSION 0999"

VIKI GAUL, APSA, PPSA (CANADA)

Nature Wildlife

Image No: 56

**2020 S4C INTERNATIONAL EXHIBITION OF PHOTOGRAPHY
WHISPERING PALMS JUDGING**



“EGRET PASSION ON DISPLAY”

VIKI GAUL, APSA, PPSA (CANADA)

Nature Wildlife

Image No: 57

**2020 S4C INTERNATIONAL EXHIBITION OF PHOTOGRAPHY
WHISPERING PALMS JUDGING**



“PLACING THE FIRST STICK 4170”

VIKI GAUL, APSA, PPSA (CANADA)

Nature General

Image No: 58

**2020 S4C INTERNATIONAL EXHIBITION OF PHOTOGRAPHY
WHISPERING PALMS JUDGING**



“TRI COLOURED WITH STICK 0728”

VIKI GAUL, APSA, PPSA (CANADA)

Nature General

Image No: 59

**2020 S4C INTERNATIONAL EXHIBITION OF PHOTOGRAPHY
WHISPERING PALMS JUDGING**



HM

“WOODSTORK LANDING 0524”

VIKI GAUL, APSA, PPSA (CANADA)

Nature General

Image No: 60

2020 S4C INTERNATIONAL EXHIBITION OF PHOTOGRAPHY
WHISPERING PALMS JUDGING



"CHAMELEON GRIN"

LEAH GRAY (CANADA)

Nature General

Image No: 61

**2020 S4C INTERNATIONAL EXHIBITION OF PHOTOGRAPHY
WHISPERING PALMS JUDGING**



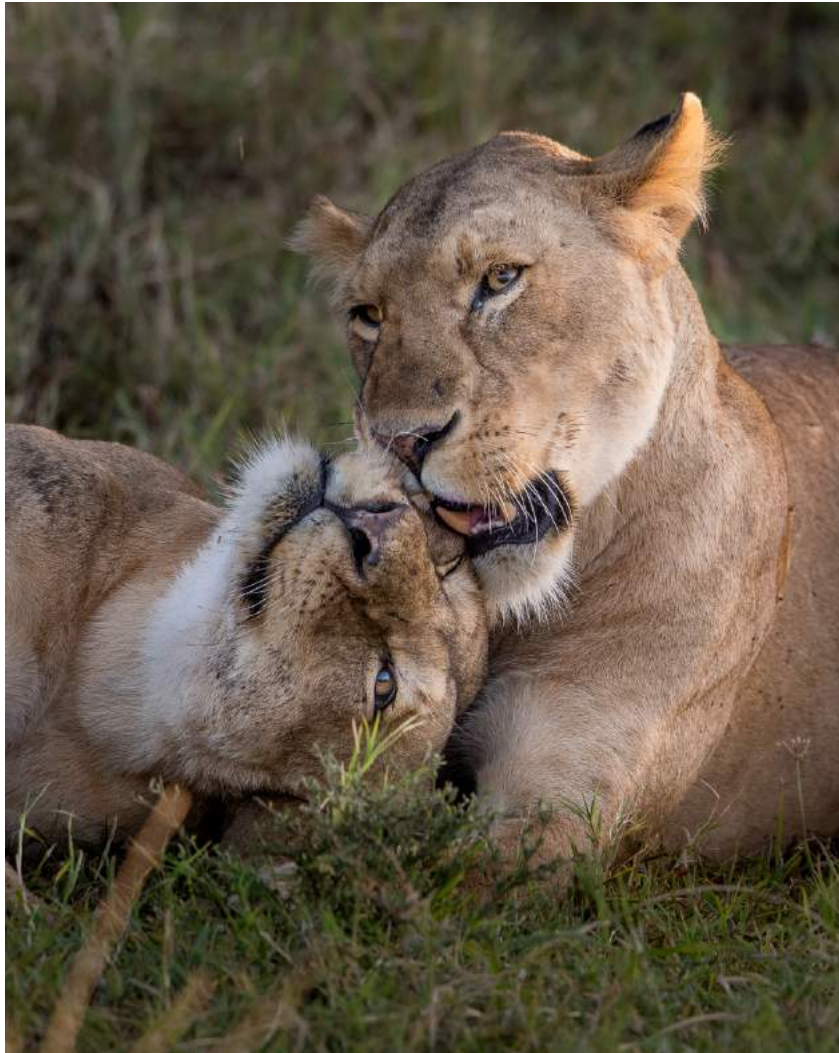
“FOLLOW THE LEADER”

LEAH GRAY (CANADA)

Nature General

Image No: 62

**2020 S4C INTERNATIONAL EXHIBITION OF PHOTOGRAPHY
WHISPERING PALMS JUDGING**



“GREETINGS”

LEAH GRAY (CANADA)

Nature Wildlife

Image No: 63

**2020 S4C INTERNATIONAL EXHIBITION OF PHOTOGRAPHY
WHISPERING PALMS JUDGING**



“LEARNING TO STALK”

LEAH GRAY (CANADA)

Nature General

Image No: 64

**2020 S4C INTERNATIONAL EXHIBITION OF PHOTOGRAPHY
WHISPERING PALMS JUDGING**



“MUSHROOM LUNCH”

LEAH GRAY (CANADA)

Nature Wildlife

Image No: 65

**2020 S4C INTERNATIONAL EXHIBITION OF PHOTOGRAPHY
WHISPERING PALMS JUDGING**



“STEP CAREFULLY”

LEAH GRAY (CANADA)

Nature General

Image No: 66

**2020 S4C INTERNATIONAL EXHIBITION OF PHOTOGRAPHY
WHISPERING PALMS JUDGING**



"BISON BABY"

CHRISTINE HADFIELD (ENGLAND)

Nature General

Image No: 67

**2020 S4C INTERNATIONAL EXHIBITION OF PHOTOGRAPHY
WHISPERING PALMS JUDGING**



“EGYPTIAN GOOSE”

CHRISTINE HADFIELD (ENGLAND)

Nature General

Image No: 68



“HIPPO YAWN”

CHRISTINE HADFIELD (ENGLAND)

Nature Wildlife

Image No: 69

**2020 S4C INTERNATIONAL EXHIBITION OF PHOTOGRAPHY
WHISPERING PALMS JUDGING**



HM

“PRAIRIE DOGS”

CHRISTINE HADFIELD (ENGLAND)

Nature General

Image No: 70

**2020 S4C INTERNATIONAL EXHIBITION OF PHOTOGRAPHY
WHISPERING PALMS JUDGING**



"VIXEN"

CHRISTINE HADFIELD (ENGLAND)

Nature General

Image No: 71

**2020 S4C INTERNATIONAL EXHIBITION OF PHOTOGRAPHY
WHISPERING PALMS JUDGING**



“BIG SPLASH”

DAVID HENDERSON (AUSTRALIA)

Nature Wildlife

Image No: 72

**2020 S4C INTERNATIONAL EXHIBITION OF PHOTOGRAPHY
WHISPERING PALMS JUDGING**



“BREACHING 1”

DAVID HENDERSON (AUSTRALIA)

Nature General

Image No: 73

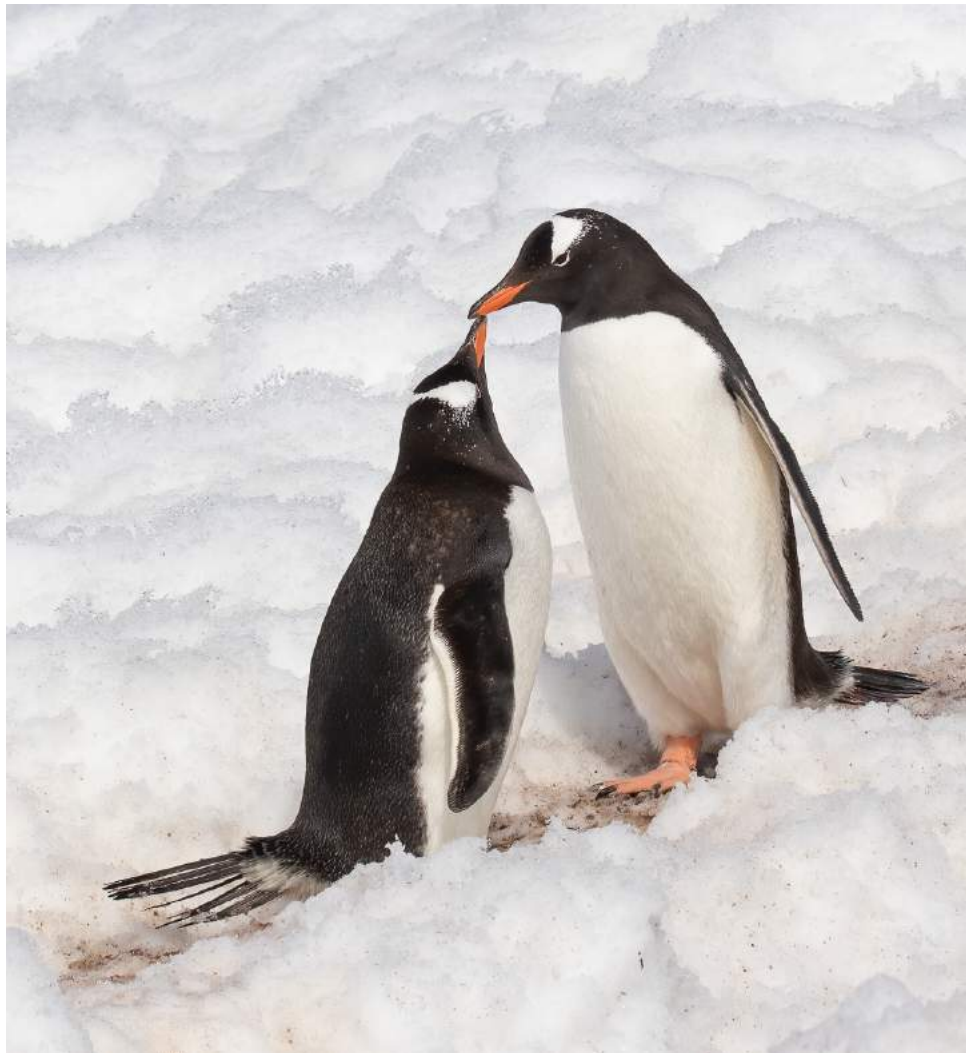


“BREAKFAST IS COMING”

DAVID HENDERSON (AUSTRALIA)

Nature Wildlife

Image No: 74



"AFFECTIONATE GENTOOS"

MARGARET HENNES, PPSA (USA)

Nature Wildlife

Image No: 75

2020 S4C INTERNATIONAL EXHIBITION OF PHOTOGRAPHY
WHISPERING PALMS JUDGING



“BEWARE OF INTRUDER”

MARGARET HENNES, PPSA (USA)

Nature General

Image No: 76



“ROYAL PENGUIN INTERACTION 5”

DENNIS HILL, PPSA (AUSTRALIA)

Nature Wildlife

Image No: 77

**2020 S4C INTERNATIONAL EXHIBITION OF PHOTOGRAPHY
WHISPERING PALMS JUDGING**



“LOVED KISSING”

YOUMANS HSIONG, PPSA (USA)

Nature Wildlife

Image No: 78

**2020 S4C INTERNATIONAL EXHIBITION OF PHOTOGRAPHY
WHISPERING PALMS JUDGING**



S4C Silver

“CRANES ENJOYING MORNING WALKING”

YOUMANS HSIONG, PPSA (USA)

Nature General

Image No: 79

**2020 S4C INTERNATIONAL EXHIBITION OF PHOTOGRAPHY
WHISPERING PALMS JUDGING**



"BIG BEND FALLS"

GEORGE HUTCHISON, QPSA (USA)

Nature General

Image No: 80



“GORILLA MAMA”

GEORGE HUTCHISON, QPSA (USA)

Nature General

Image No: 81

**2020 S4C INTERNATIONAL EXHIBITION OF PHOTOGRAPHY
WHISPERING PALMS JUDGING**



S4C Bronze

“MONO LAKE WINDOW”

GEORGE HUTCHISON, QPSA (USA)

Nature General

Image No: 82

**2020 S4C INTERNATIONAL EXHIBITION OF PHOTOGRAPHY
WHISPERING PALMS JUDGING**



S4C Bronze

“BLACK HEADED IBIS AND SNAKE”

KOSHY JOHNSON (ENGLAND)

Nature Wildlife

Image No: 83

**2020 S4C INTERNATIONAL EXHIBITION OF PHOTOGRAPHY
WHISPERING PALMS JUDGING**



“GANNET WITH VEGETATION”

KOSHY JOHNSON (ENGLAND)

Nature General

Image No: 84



“LIONESS KILLING WILDEBEEST”

KOSHY JOHNSON (ENGLAND)

Nature Wildlife

Image No: 85



HM

“RED NECK GREBE FEEDING CHICKS”

FRANCIS KING, GMP SA (CANADA)

Nature General

Image No: 86



“DESERT BEETLES MATING”

VALERIE KLEINDIENST (AUSTRALIA)

Nature General

Image No: 87

**2020 S4C INTERNATIONAL EXHIBITION OF PHOTOGRAPHY
WHISPERING PALMS JUDGING**



"IBIS ENJOYING RAIN"

VALERIE KLEINDIENST (AUSTRALIA)

Nature Wildlife

Image No: 88



“GREAT CRESTED FLYCATCHER”

IRENE KRAMER, EPSA (USA)

Nature Wildlife

Image No: 89

**2020 S4C INTERNATIONAL EXHIBITION OF PHOTOGRAPHY
WHISPERING PALMS JUDGING**



“RACCOON LOVES LUPINE”

IRENE KRAMER, EPSA (USA)

Nature General

Image No: 90



HM

“WASP ON BORAGE”

BARBARA KUEBLER, APSA, MPSA (USA)

Nature Wildlife

Image No: 91

2020 S4C INTERNATIONAL EXHIBITION OF PHOTOGRAPHY
WHISPERING PALMS JUDGING



S4C Bronze

“AURORA 25”

PHILLIP KWAN, GMPSA/G, GPSA (CANADA)

Nature General

Image No: 92

**2020 S4C INTERNATIONAL EXHIBITION OF PHOTOGRAPHY
WHISPERING PALMS JUDGING**



HM

“GREAT GRAY OWL 55”

PHILLIP KWAN, GMPSA/G, GPSA (CANADA)

Nature Wildlife

Image No: 93

**2020 S4C INTERNATIONAL EXHIBITION OF PHOTOGRAPHY
WHISPERING PALMS JUDGING**



"POLAR BEARS AT CARCASS 47"

PHILLIP KWAN, GMPSA/G, GPSA (CANADA)

Nature General

Image No: 94

**2020 S4C INTERNATIONAL EXHIBITION OF PHOTOGRAPHY
WHISPERING PALMS JUDGING**



"POLAR HUG 42"

PHILLIP KWAN, GMPSA/G, GPSA (CANADA)

Nature Wildlife

Image No: 95

**2020 S4C INTERNATIONAL EXHIBITION OF PHOTOGRAPHY
WHISPERING PALMS JUDGING**



“TERN LANDING 75”

PHILLIP KWAN, GMPA/G, GSA (CANADA)

Nature General

Image No: 96

**2020 S4C INTERNATIONAL EXHIBITION OF PHOTOGRAPHY
WHISPERING PALMS JUDGING**



“TERN RETURN 66”

PHILLIP KWAN, GMPSA/G, GPSA (CANADA)

Nature Wildlife

Image No: 97

2020 S4C INTERNATIONAL EXHIBITION OF PHOTOGRAPHY
WHISPERING PALMS JUDGING



HM

“CURVE 2”

GUEK CHENG LIM (MALAYSIA)

Nature General

Image No: 98



HM

“CURVE 4”

GUEK CHENG LIM (MALAYSIA)

Nature General

Image No: 99

2020 S4C INTERNATIONAL EXHIBITION OF PHOTOGRAPHY
WHISPERING PALMS JUDGING



PSA Best of Show Gold

"CURVE 5"

GUEK CHENG LIM (MALAYSIA)

Nature General

Image No: 100



HM

"FACE TO FACE 9"

GUEK CHENG LIM (MALAYSIA)

Nature Wildlife

Image No: 101

2020 S4C INTERNATIONAL EXHIBITION OF PHOTOGRAPHY
WHISPERING PALMS JUDGING



S4C Silver

"PINK 2"

GUEK CHENG LIM (MALAYSIA)

Nature Wildlife

Image No: 102



“PLAYFUL 14”

GUEK CHENG LIM (MALAYSIA)

Nature Wildlife

Image No: 103



HM

“PLAYFUL 32”

GUEK CHENG LIM (MALAYSIA)

Nature Wildlife

Image No: 104

**2020 S4C INTERNATIONAL EXHIBITION OF PHOTOGRAPHY
WHISPERING PALMS JUDGING**



Judge's Choice

"RAINING"

GUEK CHENG LIM (MALAYSIA)

Nature General

Image No: 105

**2020 S4C INTERNATIONAL EXHIBITION OF PHOTOGRAPHY
WHISPERING PALMS JUDGING**



“JAPANESE TIT LOVE THE FLOWER”

ROBIN LUO (CANADA)

Nature General

Image No: 106

**2020 S4C INTERNATIONAL EXHIBITION OF PHOTOGRAPHY
WHISPERING PALMS JUDGING**



“HELGOLAND GANNETS 2001”

VOLKER MEINBERG, GMP SA/S (GERMANY)

Nature General

Image No: 107

**2020 S4C INTERNATIONAL EXHIBITION OF PHOTOGRAPHY
WHISPERING PALMS JUDGING**



“HELGOLAND GANNETS 2006”

VOLKER MEINBERG, GMP SA/S (GERMANY)

Nature Wildlife

Image No: 108

**2020 S4C INTERNATIONAL EXHIBITION OF PHOTOGRAPHY
WHISPERING PALMS JUDGING**



“HELGOLAND GANNETS 2012”

VOLKER MEINBERG, GMP SA/S (GERMANY)

Nature General

Image No: 109

**2020 S4C INTERNATIONAL EXHIBITION OF PHOTOGRAPHY
WHISPERING PALMS JUDGING**



“MELVILLE BAY 33”

VOLKER MEINBERG, GMPSA/S (GERMANY)

Nature General

Image No: 110

**2020 S4C INTERNATIONAL EXHIBITION OF PHOTOGRAPHY
WHISPERING PALMS JUDGING**



“ZABRISKIE POINT SUNSET”

VICKI MORITZ, GMPSA (AUSTRALIA)

Nature General

Image No: 111



“ASSASSIN BUG WITH PREY 17”

LARRY MOYER (USA)

Nature General

Image No: 112

2020 S4C INTERNATIONAL EXHIBITION OF PHOTOGRAPHY
WHISPERING PALMS JUDGING



“LAVENDER BEE”

KATHRYN NEWMAN (USA)

Nature General

Image No: 113

**2020 S4C INTERNATIONAL EXHIBITION OF PHOTOGRAPHY
WHISPERING PALMS JUDGING**



“OWLET”

KATHRYN NEWMAN (USA)

Nature General

Image No: 114



“AFRICAN WILD DOG TUG OF WAR”

CRAIG PARKER, MPSA, BPSA (AUSTRALIA)

Nature General

Image No: 115

**2020 S4C INTERNATIONAL EXHIBITION OF PHOTOGRAPHY
WHISPERING PALMS JUDGING**



“GREY HERON WITH FROG”

CRAIG PARKER, MPSA, BPSA (AUSTRALIA)

Nature Wildlife

Image No: 116

2020 S4C INTERNATIONAL EXHIBITION OF PHOTOGRAPHY
WHISPERING PALMS JUDGING



HM

“LEOPARD MUNCHING ON IMPALA”

CRAIG PARKER, MPSA, BPSA (AUSTRALIA)

Nature Wildlife

Image No: 117

**2020 S4C INTERNATIONAL EXHIBITION OF PHOTOGRAPHY
WHISPERING PALMS JUDGING**



"OXPECKER RUBS HEADS WITH BUFFALO"

CRAIG PARKER, MPSA, BPSA (AUSTRALIA)

Nature General

Image No: 118



HM

“WEAVER NEST CONSTRUCTION 02”

CRAIG PARKER, MPSA, BPSA (AUSTRALIA)

Nature General

Image No: 119

**2020 S4C INTERNATIONAL EXHIBITION OF PHOTOGRAPHY
WHISPERING PALMS JUDGING**



"DANAUS SP DISCARDS HEAD CAPSULE"

ELIZABETH PASSUELLO, EPSA (NEW ZEALAND)

Nature General

Image No: 120

2020 S4C INTERNATIONAL EXHIBITION OF PHOTOGRAPHY
WHISPERING PALMS JUDGING



"MYCENA PARSONSIAE 6"

ELIZABETH PASSUELLO, EPSA (NEW ZEALAND)

Nature General

Image No: 121



“AUSGETROCKNET”

HEINZ PEKS (GERMANY)

Nature Wildlife

Image No: 122



“FLIEGENPILZ”

HEINZ PEKS (GERMANY)

Nature General

Image No: 123

**2020 S4C INTERNATIONAL EXHIBITION OF PHOTOGRAPHY
WHISPERING PALMS JUDGING**



“FUTTERPLATZ”

HEINZ PEKS (GERMANY)

Nature Wildlife

Image No: 124

2020 S4C INTERNATIONAL EXHIBITION OF PHOTOGRAPHY
WHISPERING PALMS JUDGING



S4C Bronze

“BEAR SNUGGLE”

CHRISTINE PENCE (USA)

Nature Wildlife

Image No: 125



“PREENING TOGETHER”

CHRISTINE PENCE (USA)

Nature Wildlife

Image No: 126

2020 S4C INTERNATIONAL EXHIBITION OF PHOTOGRAPHY
WHISPERING PALMS JUDGING



Judge's Choice

"BIRD ISLAND"

JIONGXIN PENG, PPSA (NEW ZEALAND)

Nature General

Image No: 127

**2020 S4C INTERNATIONAL EXHIBITION OF PHOTOGRAPHY
WHISPERING PALMS JUDGING**



“WATERFALL IN THE HILL”

JIONGXIN PENG, PPSA (NEW ZEALAND)

Nature General

Image No: 128

**2020 S4C INTERNATIONAL EXHIBITION OF PHOTOGRAPHY
WHISPERING PALMS JUDGING**



"FISH FOR BREAKFAST"

SHARON PRISLIPSKY, APSA, PPSA (USA)

Nature General

Image No: 129

**2020 S4C INTERNATIONAL EXHIBITION OF PHOTOGRAPHY
WHISPERING PALMS JUDGING**



“BIRD ON TREE BRANCH”

MICHAEL REYBURN (USA)

Nature Wildlife

Image No: 130



“ELK BATTLE 2017 01”

LILLIAN ROBERTS (USA)

Nature Wildlife

Image No: 131

**2020 S4C INTERNATIONAL EXHIBITION OF PHOTOGRAPHY
WHISPERING PALMS JUDGING**



“GBH NESTBUILDING PAIR 05”

LILLIAN ROBERTS (USA)

Nature Wildlife

Image No: 132

**2020 S4C INTERNATIONAL EXHIBITION OF PHOTOGRAPHY
WHISPERING PALMS JUDGING**



"PALLID BAT DRINKING 02"

LILLIAN ROBERTS (USA)

Nature General

Image No: 133



“ROADRUNNER FOOD FIGHT 01”

LILLIAN ROBERTS (USA)

Nature Wildlife

Image No: 134

**2020 S4C INTERNATIONAL EXHIBITION OF PHOTOGRAPHY
WHISPERING PALMS JUDGING**



“YOUNG CHEETAS AT REST 01”

LILLIAN ROBERTS (USA)

Nature General

Image No: 135

**2020 S4C INTERNATIONAL EXHIBITION OF PHOTOGRAPHY
WHISPERING PALMS JUDGING**



“CUSTOM MADE BED-AM ALLIGATOR”

ERIK ROSENGREN, FPSA, PPSA (USA)

Nature Wildlife

Image No: 136

**2020 S4C INTERNATIONAL EXHIBITION OF PHOTOGRAPHY
WHISPERING PALMS JUDGING**



“TRANSPORTING HER CHICK-BLK SHIMMER”

ERIK ROSENGREN, FPSA, PPSA (USA)

Nature Wildlife

Image No: 137



“WHATS THAT MOM-BLACK SKIMMERS”

ERIK ROSENGREN, FPSA, PPSA (USA)

Nature General

Image No: 138

**2020 S4C INTERNATIONAL EXHIBITION OF PHOTOGRAPHY
WHISPERING PALMS JUDGING**



“CRAB WITH FOOD”

MARIAN SANDBOTHE (USA)

Nature General

Image No: 139



“IGUANA WARNING”

MARIAN SANDBOTHE (USA)

Nature Wildlife

Image No: 140



"GRIZZLY CATCHES A CHUM"

TOM SAVAGE, APSA, MPSA2 (USA)

Nature Wildlife

Image No: 141

**2020 S4C INTERNATIONAL EXHIBITION OF PHOTOGRAPHY
WHISPERING PALMS JUDGING**



“BULL FROG”

J.R. SCHNELZER, FPSA, EPSA (USA)

Nature General

Image No: 142

2020 S4C INTERNATIONAL EXHIBITION OF PHOTOGRAPHY
WHISPERING PALMS JUDGING



S4C Gold

“HERON WITH NESTING MATERIAL”

J.R. SCHNELZER, FPSA, EPSA (USA)

Nature Wildlife

Image No: 143



“LONG NOSE BAT DRINKING”

J.R. SCHNELZER, FPSA, EPSA (USA)

Nature Wildlife

Image No: 144

**2020 S4C INTERNATIONAL EXHIBITION OF PHOTOGRAPHY
WHISPERING PALMS JUDGING**



"CANADA GOOSE 1"

WOLFGANG SCHWEDEN, GMPA/S (GERMANY)

Nature Wildlife

Image No: 145

**2020 S4C INTERNATIONAL EXHIBITION OF PHOTOGRAPHY
WHISPERING PALMS JUDGING**



“MOM AND THREE CUBS”

PETER SCIFRES, GPSA (USA)

Nature General

Image No: 146

2020 S4C INTERNATIONAL EXHIBITION OF PHOTOGRAPHY
WHISPERING PALMS JUDGING



HM

“NEOWISE OVER RED ROCKS”

PETER SCIFRES, GPSA (USA)

Nature General

Image No: 147

2020 S4C INTERNATIONAL EXHIBITION OF PHOTOGRAPHY
WHISPERING PALMS JUDGING



“LEAVE”

YANRU SHEN (CHINA)

Nature General

Image No: 148

**2020 S4C INTERNATIONAL EXHIBITION OF PHOTOGRAPHY
WHISPERING PALMS JUDGING**



"MOM AND CUB 5"

YANRU SHEN (CHINA)

Nature General

Image No: 149

2020 S4C INTERNATIONAL EXHIBITION OF PHOTOGRAPHY
WHISPERING PALMS JUDGING



Judge's Choice

"PENGUIN WORLD 3"

YANRU SHEN (CHINA)

Nature Wildlife

Image No: 150

**2020 S4C INTERNATIONAL EXHIBITION OF PHOTOGRAPHY
WHISPERING PALMS JUDGING**



"POLAR BEAR 7"

YANRU SHEN (CHINA)

Nature Wildlife

Image No: 151



“CHEETAH ATTACK”

BARUN SINHA (INDIA)

Nature Wildlife

Image No: 152



“HYENAS ON AZEBRA KILL”

BARUN SINHA (INDIA)

Nature Wildlife

Image No: 153

2020 S4C INTERNATIONAL EXHIBITION OF PHOTOGRAPHY
WHISPERING PALMS JUDGING



HM

“MIGRATION AT DUSK”

BARUN SINHA (INDIA)

Nature General

Image No: 154

**2020 S4C INTERNATIONAL EXHIBITION OF PHOTOGRAPHY
WHISPERING PALMS JUDGING**



“POLAR BEAR NO 9999”

BARUN SINHA (INDIA)

Nature Wildlife

Image No: 155

**2020 S4C INTERNATIONAL EXHIBITION OF PHOTOGRAPHY
WHISPERING PALMS JUDGING**



“POLAR BEAR NO 0575”

BARUN SINHA (INDIA)

Nature General

Image No: 156

**2020 S4C INTERNATIONAL EXHIBITION OF PHOTOGRAPHY
WHISPERING PALMS JUDGING**



"GRIZZLY BROTHERS"

STEVE SMITH (CANADA)

Nature General

Image No: 157

**2020 S4C INTERNATIONAL EXHIBITION OF PHOTOGRAPHY
WHISPERING PALMS JUDGING**



“LION FLUSHING GUINEA FOWL”

STEVE SMITH (CANADA)

Nature General

Image No: 158

**2020 S4C INTERNATIONAL EXHIBITION OF PHOTOGRAPHY
WHISPERING PALMS JUDGING**



S4C Silver

“TANGLED UP”

STEVE SMITH (CANADA)

Nature Wildlife

Image No: 159



HM

“THE WRESTLERS”

STEVE SMITH (CANADA)

Nature Wildlife

Image No: 160

**2020 S4C INTERNATIONAL EXHIBITION OF PHOTOGRAPHY
WHISPERING PALMS JUDGING**



“TWO CHEETAH WITH PREY”

STEVE SMITH (CANADA)

Nature General

Image No: 161

**2020 S4C INTERNATIONAL EXHIBITION OF PHOTOGRAPHY
WHISPERING PALMS JUDGING**



“IBIS WITH CRAB”

VALENTINA SOKOLSKAYA, APSA, EPSA (USA)

Nature Wildlife

Image No: 162

**2020 S4C INTERNATIONAL EXHIBITION OF PHOTOGRAPHY
WHISPERING PALMS JUDGING**



“SPREAD YOUR WINGS”

VALENTINA SOKOLSKAYA, APSA, EPSA (USA)

Nature Wildlife

Image No: 163

**2020 S4C INTERNATIONAL EXHIBITION OF PHOTOGRAPHY
WHISPERING PALMS JUDGING**



"FOX AT FIREHOLE RIVER"

OLEG SOKOLSKY, PPSA (USA)

Nature General

Image No: 164

**2020 S4C INTERNATIONAL EXHIBITION OF PHOTOGRAPHY
WHISPERING PALMS JUDGING**



“WESTERN GREBES RUSHING-07”

PAUL SPEAKER, PPSA (USA)

Nature Wildlife

Image No: 165

**2020 S4C INTERNATIONAL EXHIBITION OF PHOTOGRAPHY
WHISPERING PALMS JUDGING**



“BROWN BEAR INTIMIDATES CUB 0541”

CHARLES STRICKER (USA)

Nature Wildlife

Image No: 166

**2020 S4C INTERNATIONAL EXHIBITION OF PHOTOGRAPHY
WHISPERING PALMS JUDGING**



“GULLS CIRCLE FOR FOOD 0928”

CHARLES STRICKER (USA)

Nature General

Image No: 167

**2020 S4C INTERNATIONAL EXHIBITION OF PHOTOGRAPHY
WHISPERING PALMS JUDGING**



“HYENA CARRIES HIDE 3404”

CHARLES STRICKER (USA)

Nature General

Image No: 168

**2020 S4C INTERNATIONAL EXHIBITION OF PHOTOGRAPHY
WHISPERING PALMS JUDGING**



“PEREGRINE FOOD EXCHANGE #6”

SAMUEL SUN (USA)

Nature Wildlife

Image No: 169



“RUSHING CEREMONY”

SAMUEL SUN (USA)

Nature Wildlife

Image No: 170

2020 S4C INTERNATIONAL EXHIBITION OF PHOTOGRAPHY
WHISPERING PALMS JUDGING



“WHOOPING CRANE WITH WOLFBERRY”

SAMUEL SUN (USA)

Nature General

Image No: 171

**2020 S4C INTERNATIONAL EXHIBITION OF PHOTOGRAPHY
WHISPERING PALMS JUDGING**



“FOR COZY NEST 1”

NGOCAN TO (USA)

Nature General

Image No: 172



"MISSISSIPPI KITE CHICK"

INGE VAUTRIN, PPSA (USA)

Nature Wildlife

Image No: 173



"WHEEL BUG"

INGE VAUTRIN, PPSA (USA)

Nature Wildlife

Image No: 174

2020 S4C INTERNATIONAL EXHIBITION OF PHOTOGRAPHY
WHISPERING PALMS JUDGING



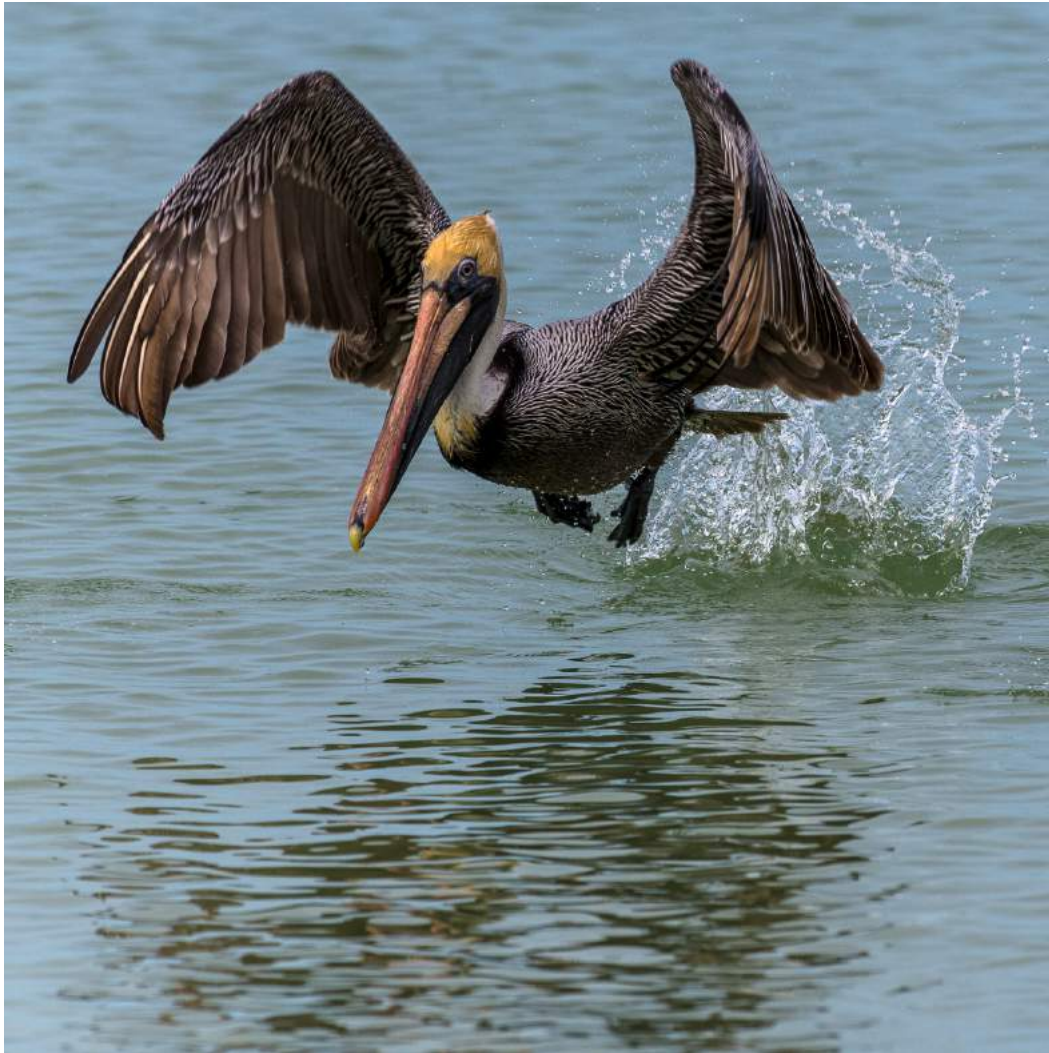
“OLD FAITHFUL GEYSER YELLOWSTONE”

JAMES WAT (USA)

Nature General

Image No: 175

**2020 S4C INTERNATIONAL EXHIBITION OF PHOTOGRAPHY
WHISPERING PALMS JUDGING**



"PELICAN TAKEOFF"

CHRISTINE WILKINS (USA)

Nature General

Image No: 176



“TWO OSPREY ON THE NEST”

CHRISTINE WILKINS (USA)

Nature General

Image No: 177

**2020 S4C INTERNATIONAL EXHIBITION OF PHOTOGRAPHY
WHISPERING PALMS JUDGING**



"MOTH ON FLOWER"

DAVID WILKINS (USA)

Nature General

Image No: 178

**2020 S4C INTERNATIONAL EXHIBITION OF PHOTOGRAPHY
WHISPERING PALMS JUDGING**



“THE SKY OF NAMIBIA”

YUET YEE WONG, PPSA (HONG KONG)

Nature General

Image No: 179

**2020 S4C INTERNATIONAL EXHIBITION OF PHOTOGRAPHY
WHISPERING PALMS JUDGING**



“TO BE ALERT”

YUET YEE WONG, PPSA (HONG KONG)

Nature General

Image No: 180

**2020 S4C INTERNATIONAL EXHIBITION OF PHOTOGRAPHY
WHISPERING PALMS JUDGING**



“SNOW WORLD81”

DANLEI YE, GMPA, SPSA (CANADA)

Nature General

Image No: 181

**2020 S4C INTERNATIONAL EXHIBITION OF PHOTOGRAPHY
WHISPERING PALMS JUDGING**

