



# 2016 S4C INTERNATIONAL EXHIBITION OF PHOTOGRAPHY

## CATALOG

### PID COLOR DIVISION

<http://www.pcms-photo.org/exhibitions>

Sponsored by the Southern California Council of Camera Clubs  
Recognized by the Photographic Society of America  
Licensed by the Global Photographic Union

#### INSTRUCTIONS:

Download catalog to a convenient place on your computer (e.g., your desktop)

Best opened with Adobe Acrobat or Adobe Acrobat Pro.

For navigational ease, make sure that Acrobat tools are visible. Depending on the version, this can normally be achieved with View>Tools.

The catalog opens in Adobe with thumbnails of the pages to the left. You may have to reveal the thumbnails with other PDF viewers.

There is an index at the front with page numbers for each of the image titles. Slide through the thumbnails to find a particular page. Or use the Acrobat Go To Page tool at the top (if visible). You can scroll through the images using the up/down arrows on your keyboard.

All copyrights in all posted images accessible through this catalog remain vested with the original makers (authors) of the images. All use, copying, or republishing without permission of the maker is prohibited, except for downloading the images directly from this document or website for viewing purposes.



## 2016 S4C INTERNATIONAL EXHIBITION OF PHOTOGRAPHY

General Chair: Joanne Stolte, FPSA, MPSA, EFIAP, HonS4C, DFS4C

Director of Operations: Stuart Lynn, APSA, HonS4C, DFS4C

Print Division Chair: Diane Racey, FPSA, GMPA, HonS4C, DFS4C

*Recognized by the  
Photographic Society of America*

*Licensed by the  
Global Photographic Union*

**T**he sponsors of this International Exhibition of Photography have been awarded Recognition by PSA, the world's largest patron of international photographic exhibitions. PSA, although it has provided Recognition, is neither a sponsor nor directly involved in the operation of this exhibition.



Valid acceptances received by PSA Members in recognized sections of this exhibition are eligible for PSA Star Ratings, listing in the world-wide PSA Who's Who of Photography and credited towards the PSA Distinctions of PPSA, EPSA, MPSA, GMPA, GMPA/b, GMPA/s, GMPA/g, and GMPA/p.

PSA is a non-profit organization promoting the advancement of photography in all its forms to novice, amateur and professional photographers world wide.

For information on membership and the many services and activities of PSA contact:

**psa**

PHOTOGRAPHIC SOCIETY OF AMERICA  
8341 S. Walker Avenue, Suite 104  
Oklahoma City, OK 73139-9401, U.S.A.  
E-mail: [hq@psa-photo.org](mailto:hq@psa-photo.org)  
Web Site: <http://www.psa-photo.org>



GLOBAL PHOTOGRAPHIC UNION - GPU (former UPI)

is a worldwide interactive organization for anyone interested in photography, be they casual, serious amateurs or professional photographers.

Founded in Gairle, The Netherlands, September 2007, GPU brings together professional and amateur enthusiasts of all ages and levels of achievement. As a nonprofit organization, its mission is to promote and enhance the art and science of photography in all its phases.

Individual members are offered a wide variety of activities: photo and digital competitions, photo exhibitions in different countries, study groups via mail, web site access, photo books, magazines, Photo festivals, distinctions, titles, and a raft of other activities.

Have look on the site: [www.guphoto.com](http://www.guphoto.com)



# 2016 S4C INTERNATIONAL EXHIBITION OF PHOTOGRAPHY

## PID COLOR DIVISION

Exhibition Chair: Joanne Stolte, FPSA, MP SA, EFIAP, HonS4C, DFS4C

Director of Operations: Stuart Lynn, APSA, HonS4C, DFS4C

:



### Judges

Larry Cowles, FPSA, GMPSA/s, EFIAP/b, DFS4C

Gary Potts, GMPSA, EFIAP/b

Nancy Speaker, AS4C

### AWARDS



## SECTION PID COLOR GENERAL

Page

### PSA BEST OF SHOW GOLD

LINGYUN MAO (USA): 'ICE'

234

### S4C GOLD

JENNI HORSNELL, GMPSA (AUSTRALIA): 'THREE TULIPS'

149

### S4C SILVER

AMLETO F. BOCCI, MP SA (ARGENTINA): 'LANES JUNCTION'

43

CLAUDIA XIAOLI LEE (TAIWAN): 'ECSTASY'

195

### S4C BRONZE

JAN HANDMAN (USA): 'FORK PLAY'

138

KATHLEEN O'DONNELL (USA): 'AUTUMN FANTASY'

268

OVI D POP (ROMANIA): 'MACRI'

297

### JUDGE'S CHOICE

ABDULLA AL-MUSHAIFRI (QATAR): 'MOTHER NATURE'

16

BOB BENSON, APSA (USA): 'FROZEN IN FOR WINTER'

30

JAMES D. SMITH, PPSA (USA): 'MARIACHI ALLEGRE\_0057'

336

### CHAIR'S AWARD - GPU

AMLETO F. BOCCI, MP SA (ARGENTINA): 'BITING GEARS'

42

## SECTION PID COLOR THEME (SCAPES)

Page

### PSA BEST OF SHOW GOLD

ABDULLA AL-MUSHAIFRI (QATAR): 'DESERT LINES'

15

### S4C GOLD

YONGXIONG LING (AUSTRALIA): 'SAILS 2'

218

### S4C SILVER

NAN CARDER, APSA, MP SA (USA): 'YOSEMITE TUNNEL VIEW 6366'

66

YONG LIANG KUEK (SINGAPORE): 'MBS BY NIGHT'

184

### S4C BRONZE

BOB BENSON, APSA (USA): 'BASS HARBOR LIGHT AND REFLECTION'

28

YONG LIANG KUEK (SINGAPORE): 'CITY BY THE RIVER'

183

ROSALIE WANG (USA): 'SAND DUNE 40'

375

### JUDGE'S CHOICE

SOUNAK BANERJEE (INDIA): 'ITS A HEIGHT RECORD'

23

KATHLEEN O'DONNELL (USA): 'INDUSTRIAL SCAPE WITH MOON'

270

SEPPO PELTONEN (FINLAND): 'FREEZING BROOK'

282



## 2016 S4C International Exhibition of Photography

### PID COLOR DIVISION ACCEPTANCES INDEX



PCG=PID Color General ; PCT=PID Color Theme

	Page		Page
<b>AGNELLI, DAVIDE (GUERNSEY)</b>		<b>BOIKE, MARGARET, EPSA (USA)</b>	
PCT CONTOURS	11	PCT DAWN IN YELLOWSTONE	45
PCT HARVEST LINES	12	<b>BORMANN, SHIRLEY, EPSA (USA)</b>	
<b>AL-MUSHAIFRI, ABDULLA (QATAR)</b>		PCT MABRY IN SPRINGTIME 1183	46
PCT AFTER THE RAIN (HM)	13	<b>BORMANN, STAN, APSA, EPSA (USA)</b>	
PCG AYA	14	PCG PLAZA DE ESPANA CANAL 4420	47
PCT DESERT LINES (PSA BEST OF SHOW GOLD)	15	<b>BROCK, KIMBERLY, PPSA (USA)</b>	
PCG MOTHER NATURE (JUDGE'S CHOICE)	16	PCG THE WHITE ROSE (HM)	48
PCG THE PRINCE (HM)	17	PCG YELLOW GERBERA DAISY PAIR	49
<b>ALTENBURG, MARIE, APSA, PPSA (USA)</b>		<b>BROMMELHORST, ELLEN (USA)</b>	
PCG AND ON THE SIXTH DAY	18	PCG DOWNTOWN ST. LOUIS FIREWORKS	50
PCG I WANNA BE DIFFERENT	19	<b>BUCHANAN, BILL, FPSA (USA)</b>	
PCG PAINTING THE MOON (HM)	20	PCG MARSHALL POINT PAINTING	51
<b>ANDERSON, DIANE (USA)</b>		PCG MY JIMMY	52
PCG DELICATE LADY	21	PCG SCHWABACHER LANDING MORNING	53
<b>ATANCE, SALVADOR, PPSA (SPAIN)</b>		<b>BURKE, BARBARA (USA)</b>	
PCG DRESS ROOM 26	22	PCG HERON	54
<b>BANERJEE, SOUNAK (INDIA)</b>		PCG MILKWEED	55
PCT ITS A HEIGHT RECORD (JUDGE'S CHOICE)	23	PCG NATURE'S PINWHEEL	56
PCT NIAGARA AT DUSK	24	<b>BUTLER, DAVID, PPSA (ENGLAND)</b>	
PCT ZURICH BY EVENING	25	PCT 1940'S STYLE (HM)	57
<b>BEISHKE, JOHN (USA)</b>		PCG DESPAIR 2	58
PCG THISTLE	26	PCT LAKELAND COLORS	59
<b>BELLER, LARRY, APSA, MPSA (USA)</b>		PCG PRAGUE JAZZ	60
PCG ON SQUAW CREEK	27	PCG THE CONDUCTOR (HM)	61
<b>BENSON, BOB, APSA (USA)</b>		<b>CARDER, NAN, APSA, MPSA (USA)</b>	
PCT BASS HARBOR LIGHT AND REFLECTION (S4C BRONZE)	28	PCG BODIE METHODIST CHURCH 7893 (HM)	62
PCT CHICAGO RIVER VIEW	29	PCT BODIE MILKY WAY 7850	63
PCG FROZEN IN FOR WINTER (JUDGE'S CHOICE)	30	PCG GREAT BLUE HERON 2982	64
PCG HE WENT THAT WAY (HM)	31	PCG THE FLAMINGO (HM)	65
PCT MOOSE AT TETONS (HM)	32	PCT YOSEMITE TUNNEL VIEW 6366 (S4C SILVER)	66
PCT SUNRISE AT GOLDEN GATE (HM)	33	<b>CHAPMAN, JOHN, MPSA (AUSTRALIA)</b>	
PCG TETON REFLECTION	34	PCT BISHOP PASS VIEW	67
<b>BENSON, PEGGY (USA)</b>		PCG KARAKACHU FLAGS	68
PCG BASKETFUL OF PUPPY	35	PCT KEPHU VALLEY	69
PCG ICELANDIC CHURCH IN THE MIST	36	<b>CHEANG, SHERMAN (MACAU)</b>	
PCG STORMY DAY AT BASS HARBOR	37	PCG FOLLOW ME	70
<b>BERNKOPF DR., ALOIS (AUSTRIA)</b>		PCG RAINING	71
PCG ALTE TIBETERIN	38	<b>CHEN, JINGHUI (CHINA)</b>	
PCG KLEMENS	39	PCT BEAUTIFUL PLAIN NO.1	72
<b>BOCCI, AMLETO F., MPSA (ARGENTINA)</b>		PCG DUSK	73
PCT ARRIVAL	40	PCT SHAN IN THE MORNING	74
PCT BIRDS AT SUNSET	41	PCG WINTER SCENERY NO.6	75
PCG BITING GEARS (CHAIR'S AWARD - GPU)	42	<b>CHEN, XINXIN (CHINA)</b>	
PCG LANES JUNCTION (S4C SILVER)	43	PCT FLOAT2	76
PCG WELDING ON STERN	44	PCG RAIN LANE 2 (HM)	77



## 2016 S4C International Exhibition of Photography

### PID COLOR DIVISION ACCEPTANCES INDEX



PCG=PID Color General ; PCT=PID Color Theme

	Page		Page
PCG SHE COMES FROM SNOW MOUNTAIN1	78	<b>EDGEL, DIANA (USA)</b>	
<b>CHEUNG, KOON NAM, EPSA (HONG KONG)</b>		PCG FALLING IN LOVE	109
PCG OSPREY AND FISH 6	79	PCG MASAI WOMAN 2	110
PCG STELLER'S SEA EAGLE 04	80	PCT YOSEMITE FALLS DAY	111
<b>CHU, SIEW THONG (MALAYSIA)</b>		<b>EMCH, FREDERICK (USA)</b>	
PCG MAKE A WISH	81	PCG DESIGN IN ICE	112
PCG MY HARDWORK	82	PCG EVENING CANOES	113
PCG TELL YOU A STORY	83	PCT ICY WATERS AT SUNRISE	114
<b>CLARK, PETER, APSA, MPSA (UNITED KINGDOM)</b>		PCG INSECT ON FLOWER BUD (HM)	115
PCT EVENING LIGHT STOKKNESS	84	PCT MICHIGAN WILDERNESS	116
PCT YELLOWSTONE TREES	85	PCG RESTING DRAGONFLY	117
<b>CLOSE, CARL, EPSA (USA)</b>		<b>FALCO, GIUSEPPE (ITALY)</b>	
PCG OLD LOCK	86	PCT RIVER THAMES	118
<b>COLE, DARREN (USA)</b>		<b>FIGUCCIO, ALBERT (USA)</b>	
PCG HAIR DAY	87	PCG BEE ON FLOWER	119
PCG WHICH WAY	88	PCG THAT IS CLOSE	120
<b>COWLES, SUSAN, APSA, EPSA (USA)</b>		<b>FORREST, MARJORIE, APSA, PPSA (USA)</b>	
PCG MAGGIE LE RED REFLECTION	89	PCT FREEDOM TOWER 2 (HM)	121
PCG SIERRA ROSE HEADPIECE	90	PCT MAINE COAST WITH SCHOONER AND GULLS (HM)	122
PCG SIERRA SEXY IN BLACK	91	PCT SUNRISE RED BARN	123
<b>CUPPENS, JOS, PPSA (BELGIUM)</b>		<b>FUNG, MAN YU, ALEX, MPSA (HONG KONG)</b>	
PCG OUDE MAN	92	PCT AT THE BEACH	124
PCG RED MAN	93	PCT NIGHT VIEW	125
PCG RED SPEED	94	PCG READY FOR WORK	126
PCG ROOD STREEPJJE	95	<b>GABERTHUEL, WALTER, MPSA (ITALY)</b>	
<b>DALEY, GREGORY, PPSA (USA)</b>		PCT ATMOSPHERIC CLOUDS	127
PCG FISH ON THE LINE	96	PCT HERBSTSTIMMUNG (HM)	128
PCG PROUD PARENT	97	PCT ICE-RAIN	129
PCG SHOWING OFF	98	<b>GAFNEY, RON (UNITED KINGDOM)</b>	
<b>DAVIS, BRIAN (UNITED KINGDOM)</b>		PCG COLD AND MISTY START	130
PCG GOING UP	99	PCG FOLLOW ME	131
PCT MISTY MORNING	100	<b>GAUL, VIKI, APSA, PPSA (CANADA)</b>	
<b>DAVIS, SHIRLEY (UNITED KINGDOM)</b>		PCG BEAUTIFUL GREAT APE 9703	132
PCG RED ARROWS FORMATION	101	PCG GBH SCRATCHING CHIN 2993	133
<b>DEBEVEC, IGOR, EPSA (SLOVENIA)</b>		PCG LOVE THIS EGRET 0856	134
PCT FIELD IN SUMMER (HM)	102	PCG SPOONBILL WITH BABY 6719	135
PCT KIRKJUFELLSFOSS II	103	<b>GOODWIN, DANNY (USA)</b>	
PCT LAVENDER FIELDS IV	104	PCG KERMITT	136
<b>DICKERSON, TERRY (USA)</b>		<b>GURNETT, CRAIG (AUSTRALIA)</b>	
PCG HARRIER MOON	105	PCT CURVE	137
<b>DOUGLAS, KYM (AUSTRALIA)</b>		<b>HANDMAN, JAN (USA)</b>	
PCG STILL HANGING ON	106	PCG FORK PLAY (S4C BRONZE)	138
PCG SUNFLOWER (HM)	107	PCG ODE TO PINK	139
<b>DUNN, JEFF (USA)</b>		PCG OLD TIMER	140
PCT AND GOD SAID LET THERE BE	108	PCG RED WHITE & BLUE	141



## 2016 S4C International Exhibition of Photography

### PID COLOR DIVISION ACCEPTANCES INDEX



PCG=PID Color General ; PCT=PID Color Theme

	Page		Page
<b>HANKIN, PHILLIP (AUSTRALIA)</b>		<b>KRAMER, IRENE (USA)</b>	
PCG EXIT STAGE RIGHT	142	PCG BURROWING OWL ON WATCH	174
<b>HENG, ZEE KEK, MPSA (SINGAPORE)</b>		PCG GOLDEN EAGLE PORTRAIT	175
PCG DANCER IN RED	143	PCT GOLDEN TRIANGLE - PITTSBURGH	176
<b>HENNES, MARGARET (USA)</b>		PCT MOONRISE OVER MITTENS	177
PCG BEE ON CONEFLOWER	144	<b>KU, MIN-SHENG, MPSA (TAIWAN)</b>	
PCG MONARCH ON ZINNIA	145	PCT SAIL AT SUNRISE #2	178
PCT REFLECTIONS	146	<b>KUEBLER, BARBARA, MPSA (USA)</b>	
<b>HOCHHAUS, ALEXANDER (GERMANY)</b>		PCG BARN WITH PAINTED HORSE	179
PCG SOLITUDE	147	PCT LOOKING INTO BRYCE	180
<b>HORSNELL, JENNI, GMPA (AUSTRALIA)</b>		PCG MAJESTIC ELK	181
PCG BEE-EATER WITH LOCUST	148	<b>KUEK, YONG LIANG (SINGAPORE)</b>	
PCG THREE TULIPS (S4C GOLD)	149	PCT BUDDHA RELIC TEMPLE	182
PCG WINDOW LIGHT	150	PCT CITY BY THE RIVER (S4C BRONZE)	183
PCG WREN WITH CADDISFLY	151	PCT MBS BY NIGHT (S4C SILVER)	184
<b>HSIONG, YOUNG (USA)</b>		<b>KWAN, PHILLIP, GMPA (CANADA)</b>	
PCG CAPE PERPETUA BEACH	152	PCG HUSKY RACER 6	185
<b>HUTCHISON, GEORGE (USA)</b>		<b>LAM, SIEW KONG THOMAS (SINGAPORE)</b>	
PCG FREE AS A BIRD	153	PCG FLYING DANCE	186
PCT LEMBERT DOME	154	<b>LAM, THANH, PPSA (USA)</b>	
PCT SEDONA VORTEX SUNSET	155	PCG HOLLY LUONG SWEET SMILE	187
PCG SOLSTICE GIRL	156	PCG LANIE VAIL AND JEWELS	188
<b>JANSON, DENA (USA)</b>		PCG THAO KRISTINE TRAN	189
PCT CLEARING STORM MORTON OVERLOOK	157	<b>LAM, WENDY WAI MAN (HONG KONG)</b>	
PCG HEADLIGHT	158	PCT RICE FIELDS AT THE HILL	190
PCG SEILEBOST 5	159	PCT SUNSET AT HARBOR CITY	191
<b>JENKIN, BARBARA, GMPA, BPSA (UNITED KINGDOM)</b>		PCG SUNSET FISHING	192
PCG DARYLLA	160	<b>LANGEVIN, DEE, MPSA (USA)</b>	
PCG LEMON LADY (HM)	161	PCG SOFT CURVES	193
PCG ZINABAR (HM)	162	<b>LEE, CLAUDIA XIAOLI (TAIWAN)</b>	
<b>JENKIN, MALCOLM, GMPA (UNITED KINGDOM)</b>		PCT AUTUMN LIGHT	194
PCG DARK SECRETS (HM)	163	PCG ECSTASY (S4C SILVER)	195
PCG HOLLY 2	164	PCG FISHING NETS (HM)	196
PCG PAIRED WHITE GLOVES	165	PCG SAILING ALONG	197
<b>KAPADIA, ABBAS, PPSA, BPSA (UNITED ARAB EMIRATES)</b>		PCT SMILING MORN	198
PCT REKJAVIK ICELAND	166	PCT TRANQUILITY	199
<b>KASTNER, JOSEF (AUSTRIA)</b>		<b>LEE, KEN (USA)</b>	
PCG DINNER AUS DEM WALD	167	PCG DRAMA LIFE	200
PCT KLOSTERINSEL	168	PCT FALL	201
PCT KRUMAU	169	PCT GOLDEN WHEATLAND	202
PCG TOR ZUM TAJ MAHAL	170	PCT MORNING LIGHT	203
PCT WEG ZUM TAJ MAHAL (HM)	171	PCT NUBBLE LIGHTHOUSE (HM)	204
<b>KENNEDY, FRANCIS, PPSA (AUSTRALIA)</b>		<b>LEUNG, WING CHUNG KENNETH (HONG KONG)</b>	
PCG MAGENTA ROSE	172	PCT CITY AT NIGHT	205
PCG POMMEGRANNETS	173	PCT GRINDELWALD	206
		PCT MAGIC CITY	207



## 2016 S4C International Exhibition of Photography

### PID COLOR DIVISION ACCEPTANCES INDEX



PCG=PID Color General ; PCT=PID Color Theme

	Page		Page
<b>LI, GUANGJIAN (CHINA)</b>		<b>MASTIN, NORMA, FPSA, MPSA (USA)</b>	
PCG IT IS GOING TO RAIN	208	PCT SYDNEY HARBOR BRIDGE NEAR SUNSET	241
<b>LIM, LEONG KIAT, EPSA (SINGAPORE)</b>		<b>MCMILLAN, DEE (USA)</b>	
PCG FISHING NET_THREE	209	PCG COLMAN PANORAMA 1	242
PCG FOUR GIRLS CROSSING SAND DUNE	210	PCG ENGLISH PITCHER AND FRUIT	243
<b>LIN, PING (CHINA)</b>		PCG GRAND CANYON	244
PCG A BLAZING PRAIRIE FLRE	211	PCT HOAR FROST DUO	245
PCG A FLOWER MADE OF STEEL	212	PCG USELESS BAY RHODE	246
PCG BOILER PLANT IMPRESSIONS	213	PCT WESTGATE SHOPPING PHOENIX	247
<b>LIN, WOLFGANG (HONG KONG)</b>		<b>MCTIGHE, ELENA, FPSA, MPSA (USA)</b>	
PCT NIGHT AND LIGHT	214	PCG AROUND THE TURN	248
<b>LING, YONGXIONG (AUSTRALIA)</b>		PCT PALOUSE FARMS	249
PCT AUSTRALIA DAY 2	215	<b>MEINBERG, VOLKER, MPSA (GERMANY)</b>	
PCT MORNING 20	216	PCG ANTELOPE CANYON 11	250
PCG RODEO OPEN 3	217	PCT TOP OF THE ROCK 3 (HM)	251
PCT SAILS 2 (S4C GOLD)	218	PCT TRIBUTE IN LIGHT 2015-2	252
PCG SURFING OPEN (HM)	219	<b>MEREDITH, HAZEL, APSA (USA)</b>	
<b>LIVOTI, JOHN (USA)</b>		PCG FLOWERS GROW IN THE DARNDDEST PLACES	253
PCG DURANGO TRAIN	220	<b>MOORE, HOLLY (USA)</b>	
PCG PAWNS IN A ROW	221	PCT AUCKLAND AFTER DARK	254
<b>LUHMAN, FRED, EPSA (USA)</b>		PCT BY THE SEASHORE	255
PCT HIGH COUNTRY FLOWER SHOW	222	PCG MR. STOIC	256
<b>LUO, WENJIE</b>		<b>MORAGA COSTOSO, VICENTE (SPAIN)</b>	
PCT BIG DESERT	223	PCT ROTTERDAM	257
PCT BREAK OUT	224	PCG SYMPHONY IN GREEN	258
<b>LYNCH, CINDY (USA)</b>		<b>MORGAN, NOEL (ENGLAND)</b>	
PCG BLUEBERRIES (HM)	225	PCG JANETTE	259
PCG DESOTO FLUID DIVE	226	PCG POWER PERSONIFIED	260
PCG OLD HOONAH FISHING BOAT	227	PCG THE PENITENT	261
PCG POCKET WATCH PARTS (HM)	228	<b>MORGAN, PETER (UNITED KINGDOM)</b>	
<b>MAGUIRE, MICHAEL (UNITED KINGDOM)</b>		PCG DUSTY OLD TOME (HM)	262
PCG GREY DAWN	229	<b>MURPHY, KEN, EPSA (USA)</b>	
PCG YELLOW HILL	230	PCG 1936 DODGE	263
<b>MAHONEY, ROSALIE (USA)</b>		PCG BLUE ANGELS MIXED UP	264
PCG CHURCH OF THE TRANSFIGURATION	231	<b>NEMEROFF, IRA, MPSA (USA)</b>	
PCG TAMPA AT NIGHT	232	PCT VENETIAN STREET SCENE	265
<b>MAO, LINGYUN (USA)</b>		<b>NEO, SAU FONG (MALAYSIA)</b>	
PCG CLOUDS AT GRAND CANYON	233	PCG SILENT NIGHT	266
PCG ICE (PSA BEST OF SHOW GOLD)	234	<b>ODONNELL, KATHLEEN (USA)</b>	
PCG ICE AND SEA	235	PCT 50TH ANNIVERSARY OF THE ARCH (HM)	267
<b>MARS, LARRY (USA)</b>		PCG AUTUMN FANTASY (S4C BRONZE)	268
PCG BRIDGE AND BUILDING	236	PCT FOUR KAYAKS (HM)	269
PCT MESQUITE DUNES	237	PCT INDUSTRIAL SCAPE WITH MOON (JUDGE'S CHOICE)	270
PCT QUARTET FLYOVER	238	PCT OLD COURTHOUSE 4TH	271
PCT VAL D'ORCIA	239	<b>OSBERG, DAVID, EPSA (USA)</b>	
PCT VICTORIA SKYLINE	240	PCG GET READY TO RUMBLE	272





## 2016 S4C International Exhibition of Photography

### PID COLOR DIVISION ACCEPTANCES INDEX



PCG=PID Color General ; PCT=PID Color Theme

	Page		Page
<b>PAPULIS, RAY (AUSTRALIA)</b>		PCG POTTER	306
PCT GUNRISE 6	273	PCG WINTER STEAM	307
PCT KIAMA POOL 1	274	<b>QUANDT, HANS-LUDWIG (GERMANY)</b>	
<b>PARKER, NANCY (USA)</b>		PCG BEI TAGESANBRUCH	308
PCG BLEEDING HEART	275	<b>QUANDT, HELGARD (GERMANY)</b>	
<b>PASSUELLO, ELIZABETH (NEW ZEALAND)</b>		PCG SCHWARZ-WEISS-ROT	309
PCG RED CHERRIES	276	<b>QUILLAN, JEANNE (USA)</b>	
<b>PECK, DIANE (USA)</b>		PCG SEASIDE COMMUNITY	310
PCT HUNTINGTON BEACH PIER AT SUNSET	277	<b>ROMAIN, LOU, FPSA, EPSA (USA)</b>	
PCT SCRIPPS PIER SUNSET	278	PCG BABOON LOVE 5 (HM)	311
PCG THE WAY THEY WERE	279	PCG BIG BARITONE BUGLE SPIRAL	312
<b>PEER, ALBERT (AUSTRIA)</b>		PCG ORANGUTAN TV SHOW	313
PCT BENIJO	280	<b>RUNYAN, TRUDY, EPSA (USA)</b>	
PCT FORBIDDING COASTLINE	281	PCG CALA LILY AND LACE	314
<b>PELTONEN, SEPPO (FINLAND)</b>		PCT HARBOR LIGHT	315
PCT FREEZING BROOK (JUDGE'S CHOICE)	282	PCG STILL LIFE TRIO	316
PCT FREEZING BROOK 4	283	<b>SALIM, MOHAMMAD ALI, MPSA (USA)</b>	
PCT OCTOBER MORNING 1501	284	PCG LIGHTHOUSE PARK	317
<b>PENG, JIONGXIN (NEW ZEALAND)</b>		PCG YELLOW LINES	318
PCT NIGHT OF HONGKONG	285	<b>SANDBOTHE, MARIAN (USA)</b>	
PCT THE ANCIENT CITY OF PING YAO	286	PCG MARTINI	319
<b>PHUA, SENG HUAT (MALAYSIA)</b>		PCG SUNFLOWER	320
PCG AUTUMN SCENE (HM)	287	PCG WEBSTER	321
PCG DEER IN FREE (HM)	288	<b>SCHREIBER, ELLA (USA)</b>	
<b>PILLIK, MANFRED (AUSTRIA)</b>		PCT DEAD HORSE POINT	322
PCT ABENDLICHT	289	PCT DENALI POND REFLECTIONS	323
PCT AISSTAL	290	PCT DENALI W SNOW GEESE	324
PCT GEBALLTE KRAFT	291	PCT SUN RISE AT ARCHES	325
PCG GENUSS	292	<b>SCHREIBER, MARIE H (USA)</b>	
PCG KOPFUEBER	293	PCG SPIRALING STAIRCASE	326
PCT VERSCHNEIT	294	<b>SCHWEDEN, WOLFGANG, MPSA (GERMANY)</b>	
<b>POLLOCK, SANDRA (USA)</b>		PCG EXPRESS YOURSELF NO SIX	327
PCG BLUE SEAT	295	<b>SCIFRES, PETER (USA)</b>	
<b>POP, OVI D (ROMANIA)</b>		PCT CATHEDRAL PEAK (HM)	328
PCG LINE	296	PCG EAT	329
PCG MACRI (S4C BRONZE)	297	PCG GHOSTS	330
PCT STAIRS ON THE WALL	298	PCT TAKE THE STEP	331
PCT THE CHURCH (HM)	299	PCT THE WALK	332
PCG UNDER	300	<b>SHACKELFORD, SCOTT (USA)</b>	
<b>PROKOSCH, LESTLIE (USA)</b>		PCT APRIL IN PRAGUE	333
PCG FLOATING LEAF	301	PCG JOSHUA TREE SUNSET - PINK	334
<b>PUSTELNIK, BIRGIT, PPSA (GERMANY)</b>		<b>SMITH, JAMES D., PPSA (USA)</b>	
PCT AUTUMN RIVER	302	PCT CHASE BANK EAST_1046	335
PCT BIRCHES AND BARN	303	PCG MARIACHI ALLEGRE_0057 (JUDGE'S CHOICE)	336
PCT BROKEN TREE	304	PCT TEMPE CITY SCAPES_3335	337
PCG FOREST EDGE	305	PCG WALKUP TO THE GATE_7161	338



## 2016 S4C International Exhibition of Photography

### PID COLOR DIVISION ACCEPTANCES INDEX



PCG=PID Color General ; PCT=PID Color Theme

	Page		Page
<b>SPITTLE, JOHN, PPSA (ENGLAND)</b>		<b>WADE, ALAN (UNITED KINGDOM)</b>	
PCG A LAKELAND POSTCARD	339	PCG GARLIC	372
PCG EASY AND SLOW	340	<b>WANG, ROSALIE (USA)</b>	
PCT JOKULSARLON ICE	341	PCG BACK HOME AT DUSK	373
PCG LIVERPOOL RED	342	PCG ON THE INLE LAKE (HM)	374
<b>STAKE, JAN-THOMAS, GMP SA (SWEDEN)</b>		PCT SAND DUNE 40 (S4C BRONZE)	375
PCG BONGELINE GOLD SCARF NO3	343	PCT STAR PATH (HM)	376
PCG BONGELINE RED LIPS NO3	344	PCG TREES AT SAND DUNE 40	377
<b>STANTON, HUGH (UNITED KINGDOM)</b>		<b>WARDEN, NORMA (USA)</b>	
PCG MULL OF GALLOWAY LIGHTHOUSE	345	PCT HOWTH, IRELAND LIGHTHOUSE	378
PCG SOLWAY SERENITY	346	PCT IRISH FISHING BOATS	379
PCG THE CROOKED PASSAGEWAY	347	PCG NATIVE AMERICAN CHIEF	380
<b>STEAD, WILL (UNITED KINGDOM)</b>		<b>WAT, JAMES (USA)</b>	
PCT CLOUDY QUAYS	348	PCT HEART OF TOKYO TRANSIT - SHINJUKU	381
PCT GLEN COE WATERFALLS	349	PCT RARE GREENISH BURNING HUNTINGTON	382
PCT HEALEY DELL	350	PCT THE PEARL OF THE ORIENT - HONGKONG	383
<b>TABORDA, JOAO, PPSA (PORTUGAL)</b>		PCT WATERFRONT OF DUBAI - UAE	384
PCG FESTICOLOR	351	<b>WAY, ALICE MARIE (USA)</b>	
PCG FRIENDS WILL BE FRIENDS	352	PCG BOEING E75 TAIL N4767V	385
PCG I M HERE	353	<b>WEI, FANGRU (CHINA)</b>	
<b>TAM, KAM CHIU (CANADA)</b>		PCG CAST A NET	386
PCG BATTLING THE WAVE (HM)	354	PCT MOUNTAIN SOUL	387
PCT BRONTE LIGHT TOWER	355	<b>WHITE, JOHN (USA)</b>	
PCG CHASING BEHIND	356	PCT DAWN DORY LAUNCH	388
PCG FALLING HEADLONG (HM)	357	PCG HIBISCUS ON BLACK	389
PCG THE EXHAUSTED DOGS	358	PCT MANZANITA BEACH OREGON	390
<b>TAY, DAVID POEY-CHER, EPSA (SINGAPORE)</b>		<b>WHITE, LARRY (USA)</b>	
PCT BARREN	359	PCT NUBBLE LIGHTHOUSE 3535	391
PCG CAT LOVER	360	PCT PALOUSE HILLS 3339	392
PCT DUBAI BUSTLE	361	PCT PORTLAND HEAD LIGHTHOUSE 3626	393
PCG HARMONY IN WHITE	362	<b>WHITSON, DAVE, APSA, PPSA (USA)</b>	
<b>TEH, TOMMY, PPSA (MALAYSIA)</b>		PCG CLOSEUP OF LAURA	394
PCG HAPPY MEAL 132	363	PCG EMILY IN THOUGHT	395
PCG OVER RIDE 2 (HM)	364	<b>WILKINS, CHRISTINE (USA)</b>	
<b>TRAN, TUAN (USA)</b>		PCT CLEARING AT VALLEY VIEW	396
PCG HUMMINGBIRD 5A10	365	PCT MILKY WAY OVER MONO LAKE	397
PCT ST AUGUSTINE BEACH PIER 1A1	366	<b>WILKINS, DAVID (USA)</b>	
<b>TSIM, WAI MAN, MPSA (AUSTRALIA)</b>		PCG BODIE CHURCH AT NIGHT	398
PCT TABLE LAND	367	PCG BURROWING OWL AND MOTH	399
<b>URIBE, JUANITA (USA)</b>		PCT SEATTLE SKYLINE AT SUNSET	400
PCG GREAT GREY OWL IN FLIGHT	368	<b>WILLEMS, RON (NEW ZEALAND)</b>	
PCG GREAT HORNED OWL 5	369	PCG AUTUMN MORNING	401
PCG WAITING FOR MOM	370	PCG PORT CHALMERS MORNING	402
<b>VAUTRIN, INGE (USA)</b>		<b>WILLIAMS, JOHN, MPSA (UNITED KINGDOM)</b>	
PCG AZENHAS DO MAR	371	PCT ICEBERGS GOLD HARBOUR	403



## 2016 S4C International Exhibition of Photography

### PID COLOR DIVISION ACCEPTANCES INDEX



PCG=PID Color General ; PCT=PID Color Theme

Page

Page

**WILLIAMS, TERRY (WALES)**

PCG PEDRO 404

**XU, XIAOMEI (CHINA)**

PCT SNOW MOUNTAIN PANORAMA 405

**YANG, DONG (CHINA)**

PCT ORIENTAL DRAGON 406

PCT THE GREAT WALL MORNING RHYME 407

**YEE, PUI-CHUNG (SINGAPORE)**

PCG LISHUI BRIDGE ON FOGGY LAKE 408

PCG LISHUI LAKE BOATS 409

**YEOH, FENDY P.C., PPSA (INDONESIA)**

PCG LOOKING DOWN 410

PCG PRAYING TO THE LORD 411

PCG TAKING A PEEP 412

**YOUNG, ALAN (UNITED KINGDOM)**

PCG FINAL TOUCHES (2) 413

PCG FUTURE ELECTRIC (3) 414

PCG RELUCTANT 415

PCG TIME LORDS (2) 416

**YUEN, HUNG KAM (AUSTRALIA)**

PCG COUNTRY LIFE 2 (HM) 417

PCG FISHERMEN 418

PCG RODEO THRILLING 419

**ZHU, HANJU (CHINA)**

PCG A CURTAIN OF MEDITATION 420

PCG MIND CHARMED 421

PCG VIVID 422

**ZIMA, HANS (USA)**

PCT PROMENADE DES ANGLAIS NICE 423



**“CONTOURS”**  
**© DAVIDE AGNELLI**  
**2016 S4C International Exhibition of Photography**  
**PID Color Theme (Scapes)**

PID Color Page 11

<http://www.pcms-photo.org/exhibitions>



**“HARVEST LINES”  
© DAVIDE AGNELLI  
2016 S4C International Exhibition of Photography  
PID Color Theme (Scapes)**

PID Color Page 12

<http://www.pcms-photo.org/exhibitions>





**“AFTER THE RAIN”**  
**© ABDULLA AL-MUSHAIFRI**  
**2016 S4C International Exhibition of Photography**  
**PID Color Theme (Scapes)**  
**HM**

PID Color Page 13

<http://www.pcms-photo.org/exhibitions>



**“AYA”**  
**© ABDULLA AL-MUSHAIFRI**  
**2016 S4C International Exhibition of Photography**  
**PID Color General**

PID Color Page 14

<http://www.pcms-photo.org/exhibitions>



**“DESERT LINES”**  
**© ABDULLA AL-MUSHAIFRI**  
**2016 S4C International Exhibition of Photography**  
**PID Color Theme (Scapes)**  
**PSA Best of Show Gold**

PID Color Page 15

<http://www.pcms-photo.org/exhibitions>



**“MOTHER NATURE”  
© ABDULLA AL-MUSHAIFRI  
2016 S4C International Exhibition of Photography  
PID Color General  
Judge’s Choice**

PID Color Page 16

<http://www.pcms-photo.org/exhibitions>



**“THE PRINCE”**  
**© ABDULLA AL-MUSHAIFRI**  
**2016 S4C International Exhibition of Photography**  
**PID Color General**  
**HM**

PID Color Page 17

<http://www.pcms-photo.org/exhibitions>





**“AND ON THE SIXTH DAY”**  
**© MARIE ALTENBURG, APSA, PPSA**  
**2016 S4C International Exhibition of Photography**  
**PID Color General**

PID Color Page 18

<http://www.pcms-photo.org/exhibitions>



**"I WANNA BE DIFFERENT"**  
© MARIE ALTENBURG, APSA, PPSA  
2016 S4C International Exhibition of Photography  
PID Color General

PID Color Page 19

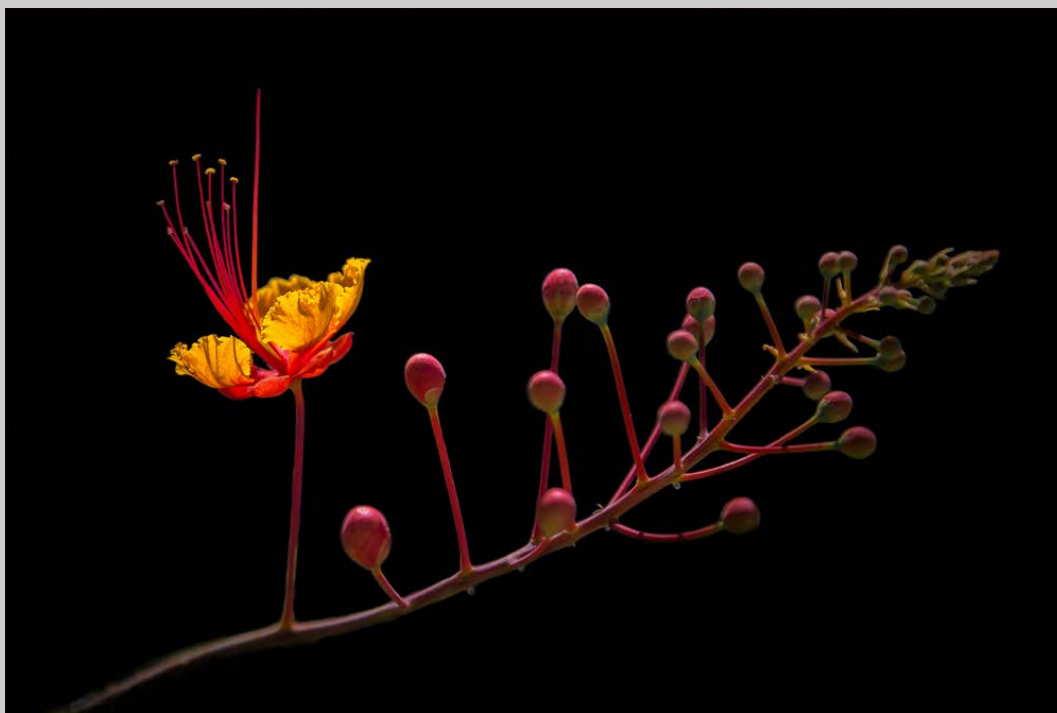
<http://www.pcms-photo.org/exhibitions>



**“PAINTING THE MOON”**  
**© MARIE ALTENBURG, APSA, PPSA**  
**2016 S4C International Exhibition of Photography**  
**PID Color General**  
**HM**

PID Color Page 20

<http://www.pcms-photo.org/exhibitions>



**“DELICATE LADY”  
© DIANE ANDERSON  
2016 S4C International Exhibition of Photography  
PID Color General**

PID Color Page 21

<http://www.pcms-photo.org/exhibitions>



**“DRESS ROOM 26”**  
**© SALVADOR ATANCE, PPSA**  
**2016 S4C International Exhibition of Photography**  
**PID Color General**

PID Color Page 22

<http://www.pcms-photo.org/exhibitions>

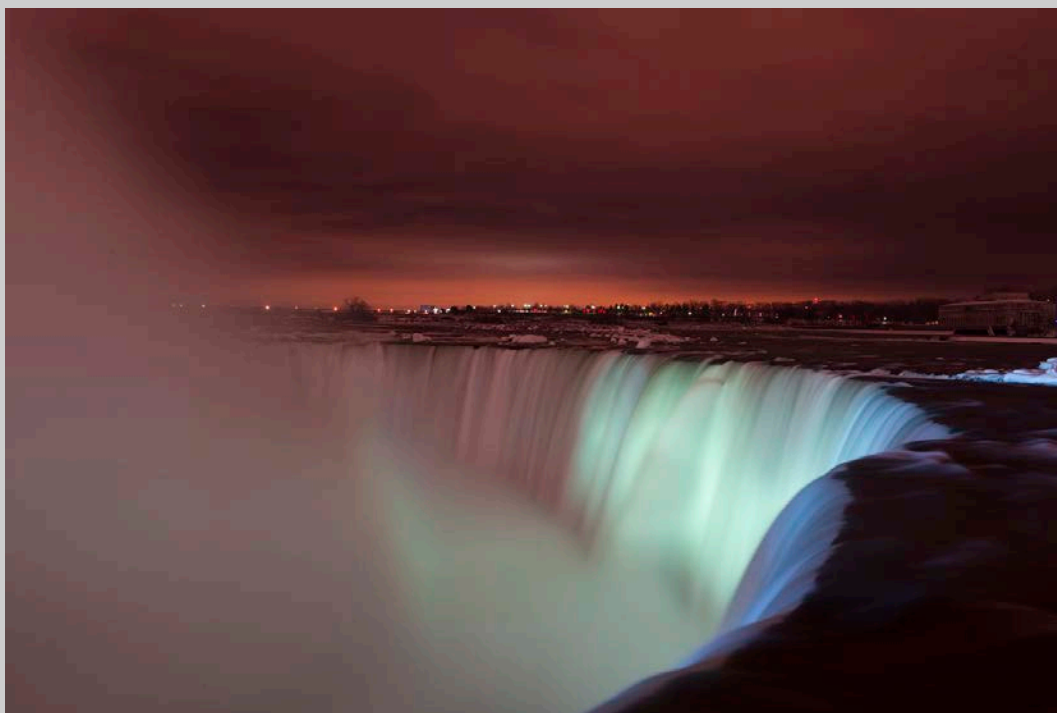




**“ITS A HEIGHT RECORD”  
© SOUNAK BANERJEE  
2016 S4C International Exhibition of Photography  
PID Color Theme (Scapes)  
Judge’s Choice**

PID Color Page 23

<http://www.pcms-photo.org/exhibitions>



**“NIAGARA AT DUSK”**  
**© SOUNAK BANERJEE**  
**2016 S4C International Exhibition of Photography**  
**PID Color Theme (Scapes)**

PID Color Page 24

<http://www.pcms-photo.org/exhibitions>



**“ZURICH BY EVENING”  
© SOUNAK BANERJEE  
2016 S4C International Exhibition of Photography  
PID Color Theme (Scapes)**

PID Color Page 25

<http://www.pcms-photo.org/exhibitions>



**"THISTLE"**  
**© JOHN BEISHKE**  
**2016 S4C International Exhibition of Photography**  
**PID Color General**

PID Color Page 26

<http://www.pcms-photo.org/exhibitions>





**“ON SQUAW CREEK”**  
**© LARRY BELLER, APSA, MPSA**  
**2016 S4C International Exhibition of Photography**  
**PID Color General**

PID Color Page 27

<http://www.pcms-photo.org/exhibitions>



**“BASS HARBOR LIGHT AND REFLECTION”  
© BOB BENSON, APSA  
2016 S4C International Exhibition of Photography  
PID Color Theme (Scapes)  
S4C Bronze**

PID Color Page 28

<http://www.pcms-photo.org/exhibitions>





**“CHICAGO RIVER VIEW”  
© BOB BENSON, APSA  
2016 S4C International Exhibition of Photography  
PID Color Theme (Scapes)**

PID Color Page 29

<http://www.pcms-photo.org/exhibitions>



**“FROZEN IN FOR WINTER”**  
**© BOB BENSON, APSA**  
**2016 S4C International Exhibition of Photography**  
**PID Color General**  
**Judge’s Choice**

PID Color Page 30

<http://www.pcms-photo.org/exhibitions>



**“HE WENT THAT WAY”  
© BOB BENSON, APSA  
2016 S4C International Exhibition of Photography  
PID Color General  
HM**

PID Color Page 31

<http://www.pcms-photo.org/exhibitions>





**“MOOSE AT TETONS”  
© BOB BENSON, APSA  
2016 S4C International Exhibition of Photography  
PID Color Theme (Scapes)  
HM**

PID Color Page 32

<http://www.pcms-photo.org/exhibitions>



**“SUNRISE AT GOLDEN GATE”**  
**© BOB BENSON, APSA**  
**2016 S4C International Exhibition of Photography**  
**PID Color Theme (Scapes)**  
**HM**

PID Color Page 33

<http://www.pcms-photo.org/exhibitions>



**“TETON REFLECTION”**  
**© BOB BENSON, APSA**  
**2016 S4C International Exhibition of Photography**  
**PID Color General**

PID Color Page 34

<http://www.pcms-photo.org/exhibitions>





**“BASKETFUL OF PUPPY”**  
**© PEGGY BENSON**  
**2016 S4C International Exhibition of Photography**  
**PID Color General**

PID Color Page 35

<http://www.pcms-photo.org/exhibitions>



**“ICELANDIC CHURCH IN THE MIST”  
© PEGGY BENSON  
2016 S4C International Exhibition of Photography  
PID Color General**

PID Color Page 36

<http://www.pcms-photo.org/exhibitions>



**“STORMY DAY AT BASS HARBOR”  
© PEGGY BENSON  
2016 S4C International Exhibition of Photography  
PID Color General**

PID Color Page 37

<http://www.pcms-photo.org/exhibitions>



**“ALTE TIBETERIN”**  
**© ALOIS BERNKOPF DR.**  
**2016 S4C International Exhibition of Photography**  
**PID Color General**

PID Color Page 38

<http://www.pcms-photo.org/exhibitions>





**“KLEMENS”**  
**© ALOIS BERNKOPF DR.**  
**2016 S4C International Exhibition of Photography**  
**PID Color General**

PID Color Page 39

<http://www.pcms-photo.org/exhibitions>



**“ARRIVAL”**  
**© AMLETO F. BOCCI, MPSA**  
**2016 S4C International Exhibition of Photography**  
**PID Color Theme (Scapes)**

PID Color Page 40

<http://www.pcms-photo.org/exhibitions>





**“BIRDS AT SUNSET”**  
**© AMLETO F. BOCCI, MPSA**  
**2016 S4C International Exhibition of Photography**  
**PID Color Theme (Scapes)**

PID Color Page 41

<http://www.pcms-photo.org/exhibitions>



**“BITING GEARS”**  
**© AMLETO F. BOCCI, MPSA**  
**2016 S4C International Exhibition of Photography**  
**PID Color General**  
**Chair’s Award - GPU**

PID Color Page 42

<http://www.pcms-photo.org/exhibitions>



**“LANES JUNCTION”**  
**© AMLETO F. BOCCI, MPSA**  
**2016 S4C International Exhibition of Photography**  
**PID Color General**  
**S4C Silver**

PID Color Page 43

<http://www.pcms-photo.org/exhibitions>





**“WELDING ON STERN”**  
**© AMLETO F. BOCCI, MP SA**  
**2016 S4C International Exhibition of Photography**  
**PID Color General**

PID Color Page 44

<http://www.pcms-photo.org/exhibitions>



**“DAWN IN YELLOWSTONE”  
© MARGARET BOIKE, EPSA  
2016 S4C International Exhibition of Photography  
PID Color Theme (Scapes)**

PID Color Page 45

<http://www.pcms-photo.org/exhibitions>





**“MABRY IN SPRINGTIME 1183”  
© SHIRLEY BORMANN, EPSA  
2016 S4C International Exhibition of Photography  
PID Color Theme (Scapes)**

PID Color Page 46

<http://www.pcms-photo.org/exhibitions>





**“PLAZA DE ESPANA CANAL 4420”  
© STAN BORMANN, APSA, EPSA  
2016 S4C International Exhibition of Photography  
PID Color General**

PID Color Page 47

<http://www.pcms-photo.org/exhibitions>



**“THE WHITE ROSE”  
© KIMBERLY BROCK, PPSA  
2016 S4C International Exhibition of Photography  
PID Color General  
HM**

PID Color Page 48

<http://www.pcms-photo.org/exhibitions>



**“YELLOW GERBERA DAISY PAIR”  
© KIMBERLY BROCK, PPSA  
2016 S4C International Exhibition of Photography  
PID Color General**

PID Color Page 49

<http://www.pcms-photo.org/exhibitions>



**“DOWNTOWN ST. LOUIS FIREWORKS”  
© ELLEN BROMMELHORST  
2016 S4C International Exhibition of Photography  
PID Color General**

PID Color Page 50

<http://www.pcms-photo.org/exhibitions>





**“MARSHALL POINT PAINTING”  
© BILL BUCHANAN, FPSA  
2016 S4C International Exhibition of Photography  
PID Color General**

PID Color Page 51

<http://www.pcms-photo.org/exhibitions>





**“MY JIMMY”**  
**© BILL BUCHANAN, FPSA**  
**2016 S4C International Exhibition of Photography**  
**PID Color General**

PID Color Page 52

<http://www.pcms-photo.org/exhibitions>



**“SCHWABACHER LANDING MORNING”  
© BILL BUCHANAN, FPSA  
2016 S4C International Exhibition of Photography  
PID Color General**

PID Color Page 53

<http://www.pcms-photo.org/exhibitions>



**“HERON”**  
**© BARBARA BURKE**  
**2016 S4C International Exhibition of Photography**  
**PID Color General**

PID Color Page 54

<http://www.pcms-photo.org/exhibitions>





**"MILKWEED"**  
**© BARBARA BURKE**  
**2016 S4C International Exhibition of Photography**  
**PID Color General**

PID Color Page 55

<http://www.pcms-photo.org/exhibitions>



**“NATURE'S PINWHEEL”**  
**© BARBARA BURKE**  
**2016 S4C International Exhibition of Photography**  
**PID Color General**

PID Color Page 56

<http://www.pcms-photo.org/exhibitions>





**“1940'S STYLE”**  
**© DAVID BUTLER, PPSA**  
**2016 S4C International Exhibition of Photography**  
**PID Color Theme (Scapes)**  
**HM**

PID Color Page 57

<http://www.pcms-photo.org/exhibitions>



**"DESPAIR 2"**  
© DAVID BUTLER, PPSA  
2016 S4C International Exhibition of Photography  
PID Color General

PID Color Page 58

<http://www.pcms-photo.org/exhibitions>



**“LAKELAND COLORS”**  
**© DAVID BUTLER, PPSA**  
**2016 S4C International Exhibition of Photography**  
**PID Color Theme (Scapes)**

PID Color Page 59

<http://www.pcms-photo.org/exhibitions>





**“PRAGUE JAZZ”**  
**© DAVID BUTLER, PPSA**  
**2016 S4C International Exhibition of Photography**  
**PID Color General**

PID Color Page 60

<http://www.pcms-photo.org/exhibitions>



**“THE CONDUCTOR”**  
© DAVID BUTLER, PPSA  
2016 S4C International Exhibition of Photography  
PID Color General  
HM

PID Color Page 61

<http://www.pcms-photo.org/exhibitions>





**“BODIE METHODIST CHURCH 7893”  
© NAN CARDER, APSA, MPSA  
2016 S4C International Exhibition of Photography  
PID Color General  
HM**

PID Color Page 62

<http://www.pcms-photo.org/exhibitions>



**“BODIE MILKY WAY 7850”  
© NAN CARDER, APSA, MPSA  
2016 S4C International Exhibition of Photography  
PID Color Theme (Scapes)**

PID Color Page 63

<http://www.pcms-photo.org/exhibitions>



**“GREAT BLUE HERON 2982”  
© NAN CARDER, APSA, MPSA  
2016 S4C International Exhibition of Photography  
PID Color General**

PID Color Page 64

<http://www.pcms-photo.org/exhibitions>



**"THE FLAMINGO"**  
**© NAN CARDER, APSA, MPSA**  
**2016 S4C International Exhibition of Photography**  
**PID Color General**  
**HM**

PID Color Page 65

<http://www.pcms-photo.org/exhibitions>





**“YOSEMITE TUNNEL VIEW 6366”  
© NAN CARDER, APSA, MPSA  
2016 S4C International Exhibition of Photography  
PID Color Theme (Scapes)  
S4C Silver**

PID Color Page 66

<http://www.pcms-photo.org/exhibitions>



**“BISHOP PASS VIEW”**  
**© JOHN CHAPMAN, MPSA**  
**2016 S4C International Exhibition of Photography**  
**PID Color Theme (Scapes)**

PID Color Page 67

<http://www.pcms-photo.org/exhibitions>



**“KARAKACHU FLAGS”**  
**© JOHN CHAPMAN, MPSA**  
**2016 S4C International Exhibition of Photography**  
**PID Color General**

PID Color Page 68

<http://www.pcms-photo.org/exhibitions>





**“KEPHU VALLEY”**  
**© JOHN CHAPMAN, MPSA**  
**2016 S4C International Exhibition of Photography**  
**PID Color Theme (Scapes)**

PID Color Page 69

<http://www.pcms-photo.org/exhibitions>





**“FOLLOW ME”**  
**© SHERMAN CHEANG**  
**2016 S4C International Exhibition of Photography**  
**PID Color General**

PID Color Page 70

<http://www.pcms-photo.org/exhibitions>



**“RAINING”**  
**© SHERMAN CHEANG**  
**2016 S4C International Exhibition of Photography**  
**PID Color General**

PID Color Page 71

<http://www.pcms-photo.org/exhibitions>



**“BEAUTIFUL PLAIN NO.1”  
© JINGHUI CHEN  
2016 S4C International Exhibition of Photography  
PID Color Theme (Scapes)**

PID Color Page 72

<http://www.pcms-photo.org/exhibitions>





**“DUSK”**  
**© JINGHUI CHEN**  
**2016 S4C International Exhibition of Photography**  
**PID Color General**

PID Color Page 73

<http://www.pcms-photo.org/exhibitions>





**“SHAN IN THE MORNING”  
© JINGHUI CHEN  
2016 S4C International Exhibition of Photography  
PID Color Theme (Scapes)**

PID Color Page 74

<http://www.pcms-photo.org/exhibitions>



**“WINTER SCENERY NO.6”  
© JINGHUI CHEN  
2016 S4C International Exhibition of Photography  
PID Color General**

PID Color Page 75

<http://www.pcms-photo.org/exhibitions>



**“FLOAT2”**  
**© XINXIN CHEN**  
**2016 S4C International Exhibition of Photography**  
**PID Color Theme (Scapes)**

PID Color Page 76

<http://www.pcms-photo.org/exhibitions>



**“RAIN LANE 2”  
© XINXIN CHEN  
2016 S4C International Exhibition of Photography  
PID Color General  
HM**

PID Color Page 77

<http://www.pcms-photo.org/exhibitions>





**“SHE COMES FROM SNOW MOUNTAIN1”**  
**© XINXIN CHEN**  
**2016 S4C International Exhibition of Photography**  
**PID Color General**

PID Color Page 78

<http://www.pcms-photo.org/exhibitions>



**“OSPREY AND FISH 6”  
© KOON NAM CHEUNG, EPSA  
2016 S4C International Exhibition of Photography  
PID Color General**

PID Color Page 79

<http://www.pcms-photo.org/exhibitions>



**“STELLER'S SEA EAGLE 04”  
© KOON NAM CHEUNG, EPSA  
2016 S4C International Exhibition of Photography  
PID Color General**

PID Color Page 80

<http://www.pcms-photo.org/exhibitions>



**“MAKE A WISH”  
© SIEW THONG CHU  
2016 S4C International Exhibition of Photography  
PID Color General**

PID Color Page 81

<http://www.pcms-photo.org/exhibitions>





**“MY HARDWORK”**  
**© SIEW THONG CHU**  
**2016 S4C International Exhibition of Photography**  
**PID Color General**

PID Color Page 82

<http://www.pcms-photo.org/exhibitions>



**“TELL YOU A STORY”  
© SIEW THONG CHU  
2016 S4C International Exhibition of Photography  
PID Color General**

PID Color Page 83

<http://www.pcms-photo.org/exhibitions>



**“EVENING LIGHT STOKKNESS”  
© PETER CLARK, APSA, MPSA  
2016 S4C International Exhibition of Photography  
PID Color Theme (Scapes)**

PID Color Page 84

<http://www.pcms-photo.org/exhibitions>



**“YELLOWSTONE TREES”**  
**© PETER CLARK, APSA, MPSA**  
**2016 S4C International Exhibition of Photography**  
**PID Color Theme (Scapes)**

PID Color Page 85

<http://www.pcms-photo.org/exhibitions>





**“OLD LOCK”**  
**© CARL CLOSE, EPSA**  
**2016 S4C International Exhibition of Photography**  
**PID Color General**

PID Color Page 86

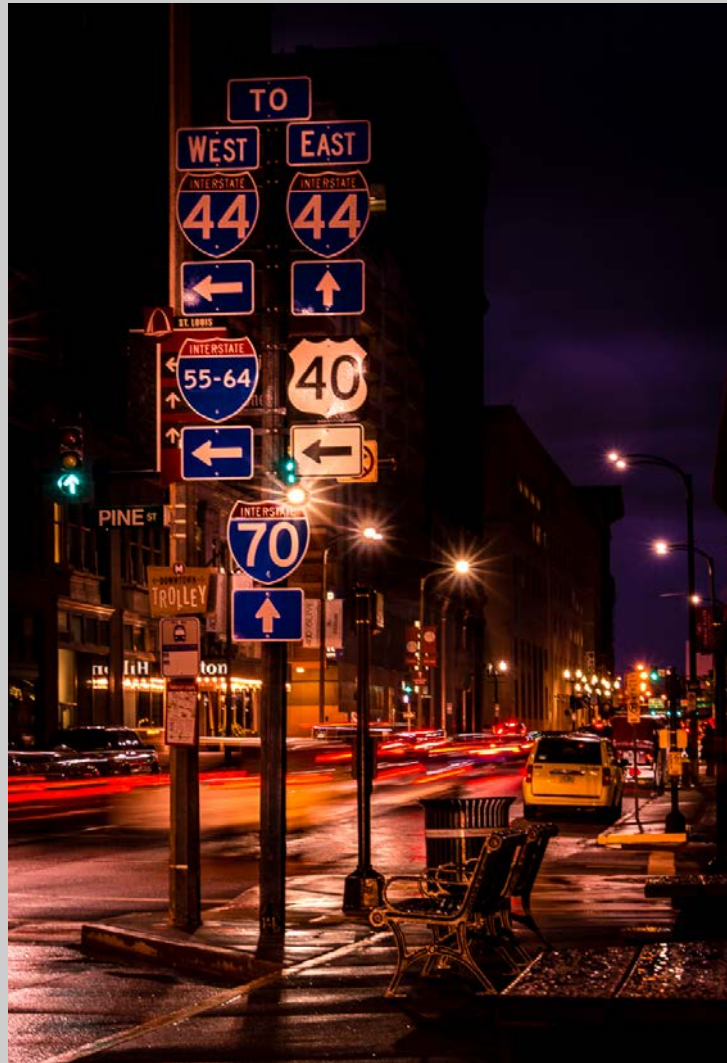
<http://www.pcms-photo.org/exhibitions>



**"HAIR DAY"**  
**© DARREN COLE**  
**2016 S4C International Exhibition of Photography**  
**PID Color General**

PID Color Page 87

<http://www.pcms-photo.org/exhibitions>



**“WHICH WAY”**  
**© DARREN COLE**  
**2016 S4C International Exhibition of Photography**  
**PID Color General**

PID Color Page 88

<http://www.pcms-photo.org/exhibitions>



**"MAGGIE LE RED REFLECTION"**  
**© SUSAN COWLES, APSA, EPSA**  
**2016 S4C International Exhibition of Photography**  
**PID Color General**

PID Color Page 89

<http://www.pcms-photo.org/exhibitions>





**“SIERRA ROSE HEADPIECE”**  
**© SUSAN COWLES, APSA, EPSA**  
**2016 S4C International Exhibition of Photography**  
**PID Color General**

PID Color Page 90

<http://www.pcms-photo.org/exhibitions>



**“SIERRA SEXY IN BLACK”**  
**© SUSAN COWLES, APSA, EPSA**  
**2016 S4C International Exhibition of Photography**  
**PID Color General**

PID Color Page 91

<http://www.pcms-photo.org/exhibitions>



**“OUDE MAN”**  
**© JOS CUPPENS, PPSA**  
**2016 S4C International Exhibition of Photography**  
**PID Color General**

PID Color Page 92

<http://www.pcms-photo.org/exhibitions>



**“RED MAN”**  
**© JOS CUPPENS, PPSA**  
**2016 S4C International Exhibition of Photography**  
**PID Color General**

PID Color Page 93

<http://www.pcms-photo.org/exhibitions>





**“RED SPEED”**  
**© JOS CUPPENS, PPSA**  
**2016 S4C International Exhibition of Photography**  
**PID Color General**

PID Color Page 94

<http://www.pcms-photo.org/exhibitions>



**“ROOD STREEPJE”  
© JOS CUPPENS, PPSA  
2016 S4C International Exhibition of Photography  
PID Color General**

PID Color Page 95

<http://www.pcms-photo.org/exhibitions>



**“FISH ON THE LINE”  
© GREGORY DALEY, PPSA  
2016 S4C International Exhibition of Photography  
PID Color General**

PID Color Page 96

<http://www.pcms-photo.org/exhibitions>



**“PROUD PARENT”**  
**© GREGORY DALEY, PPSA**  
**2016 S4C International Exhibition of Photography**  
**PID Color General**

PID Color Page 97

<http://www.pcms-photo.org/exhibitions>





**“SHOWING OFF”**  
**© GREGORY DALEY, PPSA**  
**2016 S4C International Exhibition of Photography**  
**PID Color General**

PID Color Page 98

<http://www.pcms-photo.org/exhibitions>



**“GOING UP”**  
**© BRIAN DAVIS**  
**2016 S4C International Exhibition of Photography**  
**PID Color General**

PID Color Page 99

<http://www.pcms-photo.org/exhibitions>



**“MISTY MORNING”  
© BRIAN DAVIS  
2016 S4C International Exhibition of Photography  
PID Color Theme (Scapes)**

PID Color Page 100

<http://www.pcms-photo.org/exhibitions>



**“RED ARROWS FORMATION”**  
**© SHIRLEY DAVIS**  
**2016 S4C International Exhibition of Photography**  
**PID Color General**

PID Color Page 101

<http://www.pcms-photo.org/exhibitions>





**“FIELD IN SUMMER”**  
**© IGOR DEBEVEC, EPSA**  
**2016 S4C International Exhibition of Photography**  
**PID Color Theme (Scapes)**  
**HM**

PID Color Page 102

<http://www.pcms-photo.org/exhibitions>



**“KIRKJUFELLSFOSS II”**  
**© IGOR DEBEVEC, EPSA**  
**2016 S4C International Exhibition of Photography**  
**PID Color Theme (Scapes)**

PID Color Page 103

<http://www.pcms-photo.org/exhibitions>



**“LAVENDER FIELDS IV”  
© IGOR DEBEVEC, EPSA  
2016 S4C International Exhibition of Photography  
PID Color Theme (Scapes)**

PID Color Page 104

<http://www.pcms-photo.org/exhibitions>





**“HARRIER MOON”**  
**© TERRY DICKERSON**  
**2016 S4C International Exhibition of Photography**  
**PID Color General**

PID Color Page 105

<http://www.pcms-photo.org/exhibitions>





**“STILL HANGING ON”  
© KYM DOUGLAS  
2016 S4C International Exhibition of Photography  
PID Color General**

PID Color Page 106

<http://www.pcms-photo.org/exhibitions>



**“SUNFLOWER”**  
**© KYM DOUGLAS**  
**2016 S4C International Exhibition of Photography**  
**PID Color General**  
**HM**

PID Color Page 107

<http://www.pcms-photo.org/exhibitions>



**“AND GOD SAID LET THERE BE”  
© JEFF DUNN  
2016 S4C International Exhibition of Photography  
PID Color Theme (Scapes)**

PID Color Page 108

<http://www.pcms-photo.org/exhibitions>



**“FALLING IN LOVE”  
© DIANA EDGEL  
2016 S4C International Exhibition of Photography  
PID Color General**

PID Color Page 109

<http://www.pcms-photo.org/exhibitions>





**“MASAI WOMAN 2”  
© DIANA EDGEL  
2016 S4C International Exhibition of Photography  
PID Color General**

PID Color Page 110

<http://www.pcms-photo.org/exhibitions>



**“YOSEMITE FALLS DAY”  
© DIANA EDGEL  
2016 S4C International Exhibition of Photography  
PID Color Theme (Scapes)**

PID Color Page 111

<http://www.pcms-photo.org/exhibitions>





**"DESIGN IN ICE"**  
**© FREDERICK EMCH**  
**2016 S4C International Exhibition of Photography**  
**PID Color General**

PID Color Page 112

<http://www.pcms-photo.org/exhibitions>



**“EVENING CANOES”  
© FREDERICK EMCH  
2016 S4C International Exhibition of Photography  
PID Color General**

PID Color Page 113

<http://www.pcms-photo.org/exhibitions>





**“ICY WATERS AT SUNRISE”  
© FREDERICK EMCH  
2016 S4C International Exhibition of Photography  
PID Color Theme (Scapes)**

PID Color Page 114

<http://www.pcms-photo.org/exhibitions>



**“INSECT ON FLOWER BUD”**  
**© FREDERICK EMCH**  
**2016 S4C International Exhibition of Photography**  
**PID Color General**  
**HM**

PID Color Page 115

<http://www.pcms-photo.org/exhibitions>



**“MICHIGAN WILDERNESS”  
© FREDERICK EMCH  
2016 S4C International Exhibition of Photography  
PID Color Theme (Scapes)**

PID Color Page 116

<http://www.pcms-photo.org/exhibitions>





**“RESTING DRAGONFLY”**  
**© FREDERICK EMCH**  
**2016 S4C International Exhibition of Photography**  
**PID Color General**

PID Color Page 117

<http://www.pcms-photo.org/exhibitions>

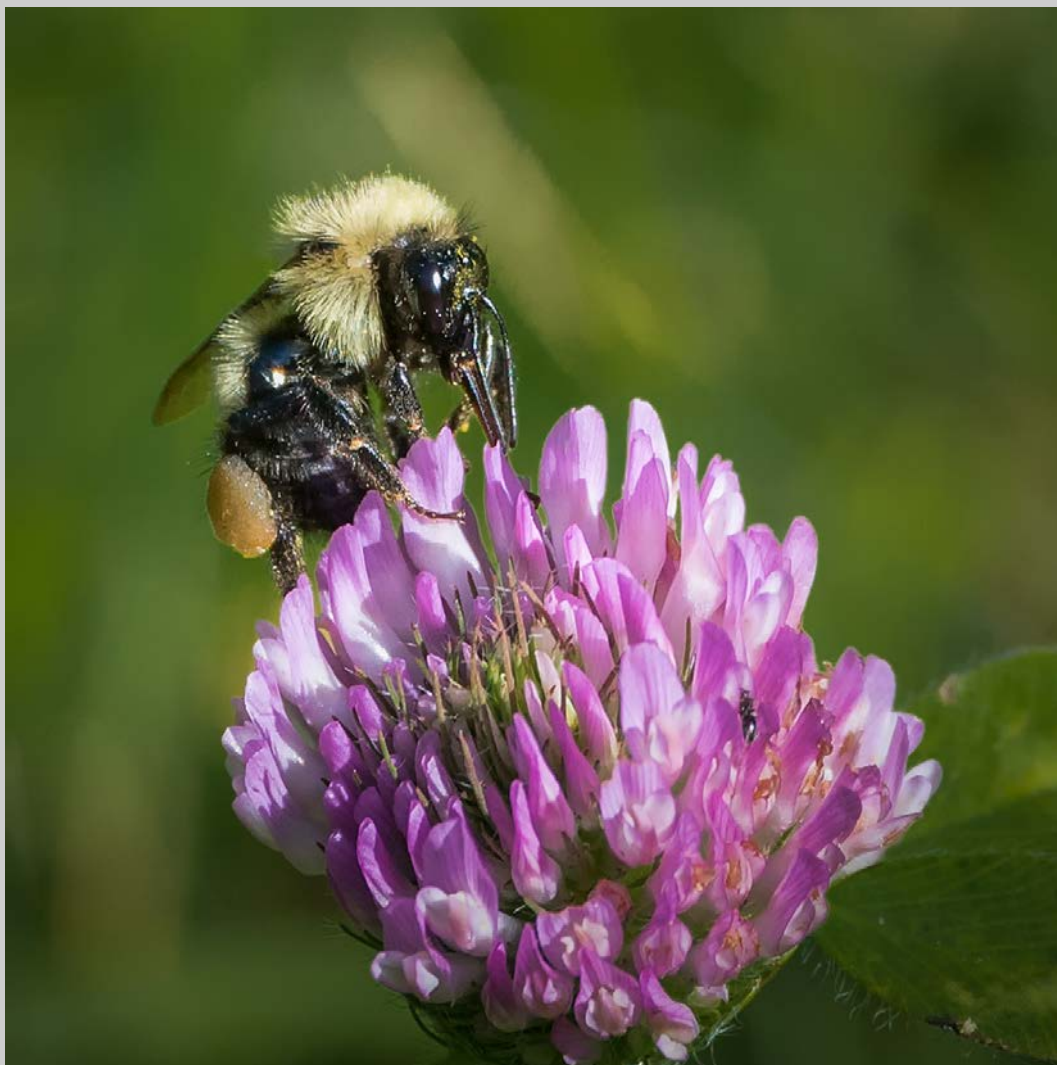




**“RIVER THAMES”  
© GIUSEPPE FALCO  
2016 S4C International Exhibition of Photography  
PID Color Theme (Scapes)**

PID Color Page 118

<http://www.pcms-photo.org/exhibitions>



**“BEE ON FLOWER”  
© ALBERT FIGUCCIO  
2016 S4C International Exhibition of Photography  
PID Color General**

PID Color Page 119

<http://www.pcms-photo.org/exhibitions>



**“THAT IS CLOSE”**  
**© ALBERT FIGUCCIO**  
**2016 S4C International Exhibition of Photography**  
**PID Color General**

PID Color Page 120

<http://www.pcms-photo.org/exhibitions>



**“FREEDOM TOWER 2”**  
**© MARJORIE FORREST, APSA, PPSA**  
**2016 S4C International Exhibition of Photography**  
**PID Color Theme (Scapes)**  
**HM**

PID Color Page 121

<http://www.pcms-photo.org/exhibitions>





**“MAINE COAST WITH SCHOONER AND GULLS”**  
**© MARJORIE FORREST, APSA, PPSA**  
**2016 S4C International Exhibition of Photography**  
**PID Color Theme (Scapes)**  
**HM**

PID Color Page 122

<http://www.pcms-photo.org/exhibitions>



**“SUNRISE RED BARN”**  
**© MARJORIE FORREST, APSA, PPSA**  
**2016 S4C International Exhibition of Photography**  
**PID Color Theme (Scapes)**

PID Color Page 123

<http://www.pcms-photo.org/exhibitions>



**“AT THE BEACH”**  
**© MAN YU, ALEX FUNG, MPSA**  
**2016 S4C International Exhibition of Photography**  
**PID Color Theme (Scapes)**

PID Color Page 124

<http://www.pcms-photo.org/exhibitions>



**“NIGHT VIEW”**  
**© MAN YU, ALEX FUNG, MPSA**  
**2016 S4C International Exhibition of Photography**  
**PID Color Theme (Scapes)**

PID Color Page 125

<http://www.pcms-photo.org/exhibitions>





**“READY FOR WORK”**  
**© MAN YU, ALEX FUNG, MPSA**  
**2016 S4C International Exhibition of Photography**  
**PID Color General**

PID Color Page 126

<http://www.pcms-photo.org/exhibitions>



**“ATMOSPHERIC CLOUDS”**  
**© WALTER GABERTHUEL, MPSA**  
**2016 S4C International Exhibition of Photography**  
**PID Color Theme (Scapes)**

PID Color Page 127

<http://www.pcms-photo.org/exhibitions>



**“HERBSTSTIMMUNG”**  
**© WALTER GABERTHUEL, MPSA**  
**2016 S4C International Exhibition of Photography**  
**PID Color Theme (Scapes)**  
**HM**

PID Color Page 128

<http://www.pcms-photo.org/exhibitions>





**“ICE-RAIN”**  
**© WALTER GABERTHUEL, MPSA**  
**2016 S4C International Exhibition of Photography**  
**PID Color Theme (Scapes)**

PID Color Page 129

<http://www.pcms-photo.org/exhibitions>





**“COLD AND MISTY START”**  
**© RON GAFNEY**  
**2016 S4C International Exhibition of Photography**  
**PID Color General**

PID Color Page 130

<http://www.pcms-photo.org/exhibitions>



**“FOLLOW ME”  
© RON GAFNEY  
2016 S4C International Exhibition of Photography  
PID Color General**

PID Color Page 131

<http://www.pcms-photo.org/exhibitions>



**“BEAUTIFUL GREAT APE 9703”  
© VIKI GAUL, APSA, PPSA  
2016 S4C International Exhibition of Photography  
PID Color General**

PID Color Page 132

<http://www.pcms-photo.org/exhibitions>



**“GBH SCRATCHING CHIN 2993”  
© VIKI GAUL, APSA, PPSA  
2016 S4C International Exhibition of Photography  
PID Color General**

PID Color Page 133

<http://www.pcms-photo.org/exhibitions>





**“LOVE THIS EGRET 0856”  
© VIKI GAUL, APSA, PPSA  
2016 S4C International Exhibition of Photography  
PID Color General**

PID Color Page 134

<http://www.pcms-photo.org/exhibitions>



**“SPOONBILL WITH BABY 6719”**  
**© VIKI GAUL, APSA, PPSA**  
**2016 S4C International Exhibition of Photography**  
**PID Color General**

PID Color Page 135

<http://www.pcms-photo.org/exhibitions>



**“KERMITT”**  
**© DANNY GOODWIN**  
**2016 S4C International Exhibition of Photography**  
**PID Color General**

PID Color Page 136

<http://www.pcms-photo.org/exhibitions>





**“CURVE”**  
**© CRAIG GURNETT**  
**2016 S4C International Exhibition of Photography**  
**PID Color Theme (Scapes)**

PID Color Page 137

<http://www.pcms-photo.org/exhibitions>





**“FORK PLAY”  
© JAN HANDMAN  
2016 S4C International Exhibition of Photography  
PID Color General  
S4C Bronze**

PID Color Page 138

<http://www.pcms-photo.org/exhibitions>



**“ODE TO PINK”**  
**© JAN HANDMAN**  
**2016 S4C International Exhibition of Photography**  
**PID Color General**

PID Color Page 139

<http://www.pcms-photo.org/exhibitions>



**“OLD TIMER”**  
**© JAN HANDMAN**  
**2016 S4C International Exhibition of Photography**  
**PID Color General**

PID Color Page 140

<http://www.pcms-photo.org/exhibitions>



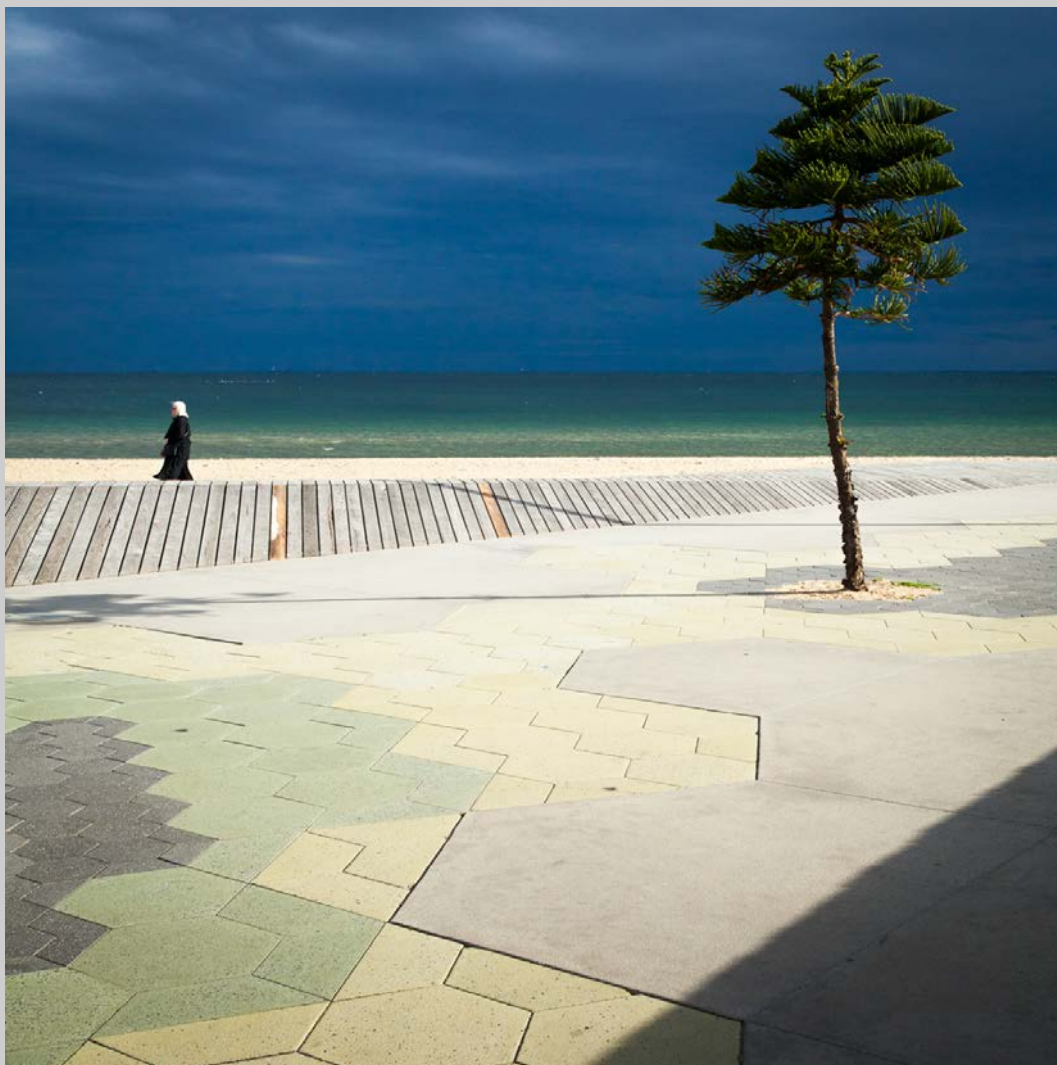


**“RED WHITE & BLUE”  
© JAN HANDMAN  
2016 S4C International Exhibition of Photography  
PID Color General**

PID Color Page 141

<http://www.pcms-photo.org/exhibitions>





**“EXIT STAGE RIGHT”**  
**© PHILLIP HANKIN**  
**2016 S4C International Exhibition of Photography**  
**PID Color General**

PID Color Page 142

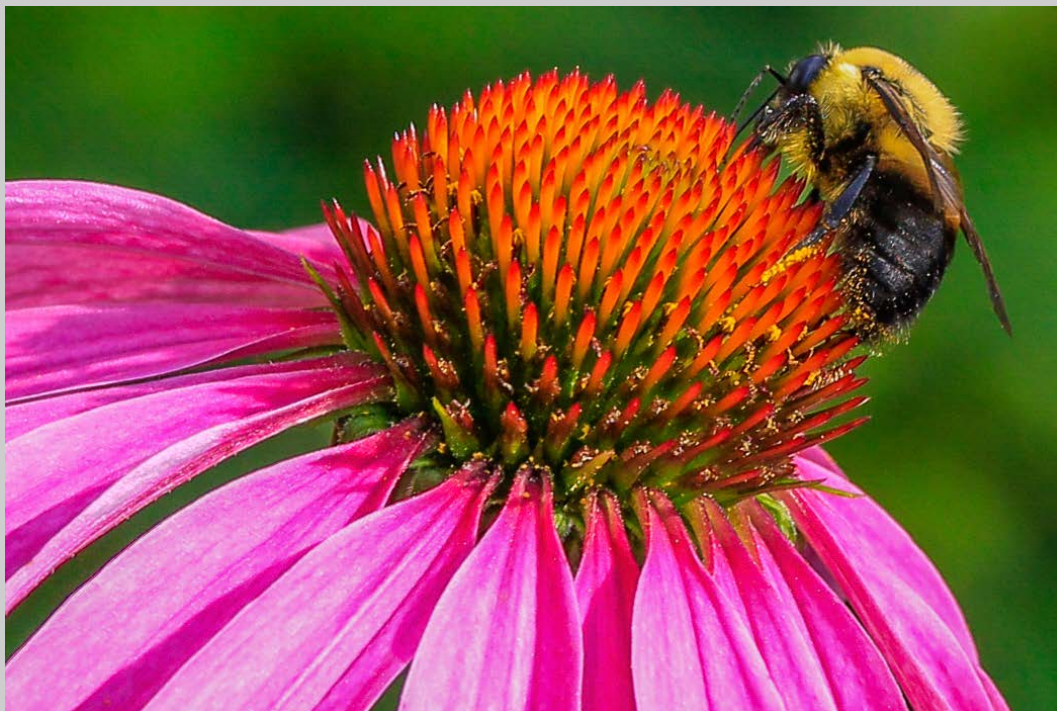
<http://www.pcms-photo.org/exhibitions>



**“DANCER IN RED”**  
**© ZEE KEK HENG, MPSA**  
**2016 S4C International Exhibition of Photography**  
**PID Color General**

PID Color Page 143

<http://www.pcms-photo.org/exhibitions>



**“BEE ON CONEFLOWER”  
© MARGARET HENNES  
2016 S4C International Exhibition of Photography  
PID Color General**

PID Color Page 144

<http://www.pcms-photo.org/exhibitions>



**“MONARCH ON ZINNIA”  
© MARGARET HENNES  
2016 S4C International Exhibition of Photography  
PID Color General**

PID Color Page 145

<http://www.pcms-photo.org/exhibitions>





**“REFLECTIONS”**  
**© MARGARET HENNES**  
**2016 S4C International Exhibition of Photography**  
**PID Color Theme (Scapes)**

PID Color Page 146

<http://www.pcms-photo.org/exhibitions>



**“SOLITUDE”**  
**© ALEXANDER HOCHHAUS**  
**2016 S4C International Exhibition of Photography**  
**PID Color General**

PID Color Page 147

<http://www.pcms-photo.org/exhibitions>



**“BEE-EATER WITH LOCUST”**  
**© JENNI HORSNELL, GMPA**  
**2016 S4C International Exhibition of Photography**  
**PID Color General**

PID Color Page 148

<http://www.pcms-photo.org/exhibitions>



**“THREE TULIPS”**  
**© JENNI HORSNELL, GMPA**  
**2016 S4C International Exhibition of Photography**  
**PID Color General**  
**S4C Gold**

PID Color Page 149

<http://www.pcms-photo.org/exhibitions>





**"WINDOW LIGHT"**  
**© JENNI HORSNELL, GMPSA**  
**2016 S4C International Exhibition of Photography**  
**PID Color General**

PID Color Page 150

<http://www.pcms-photo.org/exhibitions>



**“WREN WITH CADDISFLY”**  
**© JENNI HORSNELL, GMPA**  
**2016 S4C International Exhibition of Photography**  
**PID Color General**

PID Color Page 151

<http://www.pcms-photo.org/exhibitions>



**“CAPE PERPETUA BEACH”  
© YOUMANS HSIONG  
2016 S4C International Exhibition of Photography  
PID Color General**

PID Color Page 152

<http://www.pcms-photo.org/exhibitions>



**“FREE AS A BIRD”**  
**© GEORGE HUTCHISON**  
**2016 S4C International Exhibition of Photography**  
**PID Color General**

PID Color Page 153

<http://www.pcms-photo.org/exhibitions>





**“LEMBERT DOME”  
© GEORGE HUTCHISON  
2016 S4C International Exhibition of Photography  
PID Color Theme (Scapes)**

PID Color Page 154

<http://www.pcms-photo.org/exhibitions>



**“SEDONA VORTEX SUNSET”  
© GEORGE HUTCHISON  
2016 S4C International Exhibition of Photography  
PID Color Theme (Scapes)**

PID Color Page 155

<http://www.pcms-photo.org/exhibitions>

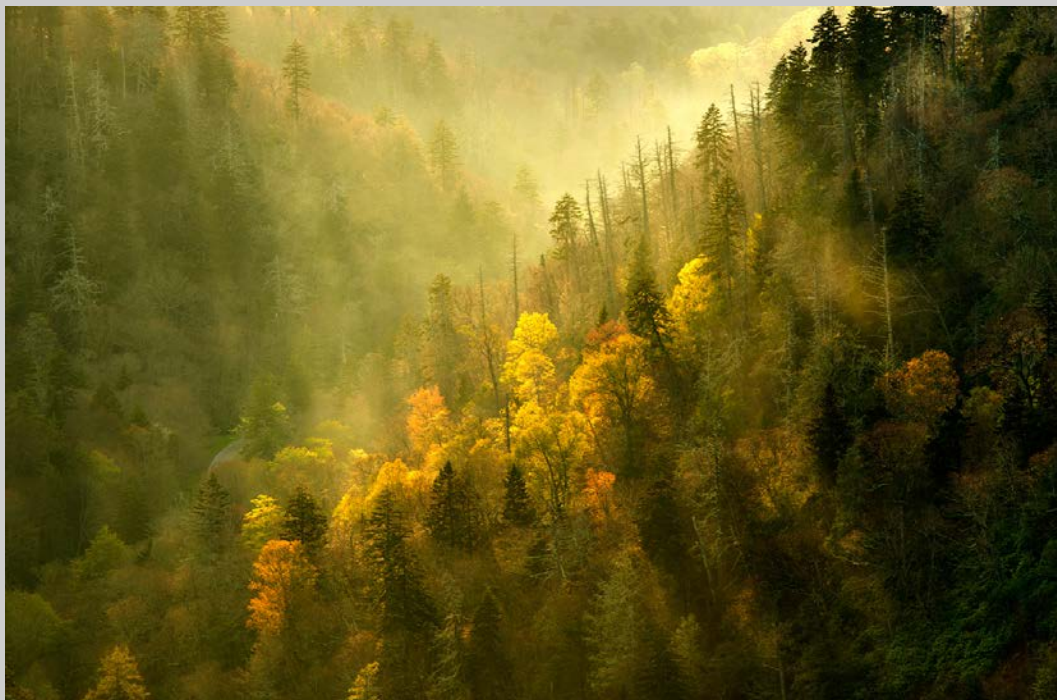


**“SOLSTICE GIRL”  
© GEORGE HUTCHISON  
2016 S4C International Exhibition of Photography  
PID Color General**

PID Color Page 156

<http://www.pcms-photo.org/exhibitions>



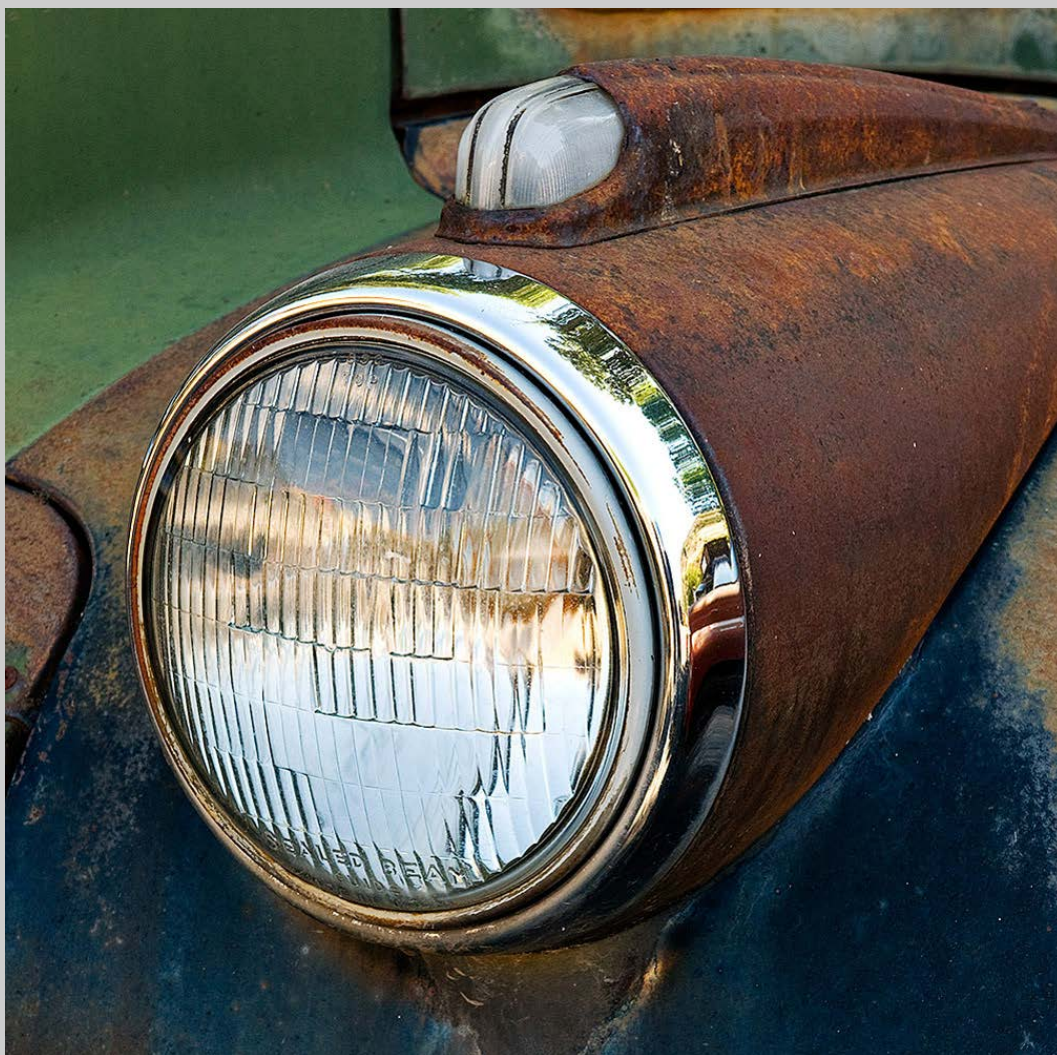


**“CLEARING STORM MORTON OVERLOOK”  
© DENA JANSON  
2016 S4C International Exhibition of Photography  
PID Color Theme (Scapes)**

PID Color Page 157

<http://www.pcms-photo.org/exhibitions>





**“HEADLIGHT”**  
**© DENA JANSON**  
**2016 S4C International Exhibition of Photography**  
**PID Color General**

PID Color Page 158

<http://www.pcms-photo.org/exhibitions>



**“SEILEBOST 5”  
© DENA JANSON  
2016 S4C International Exhibition of Photography  
PID Color General**

PID Color Page 159

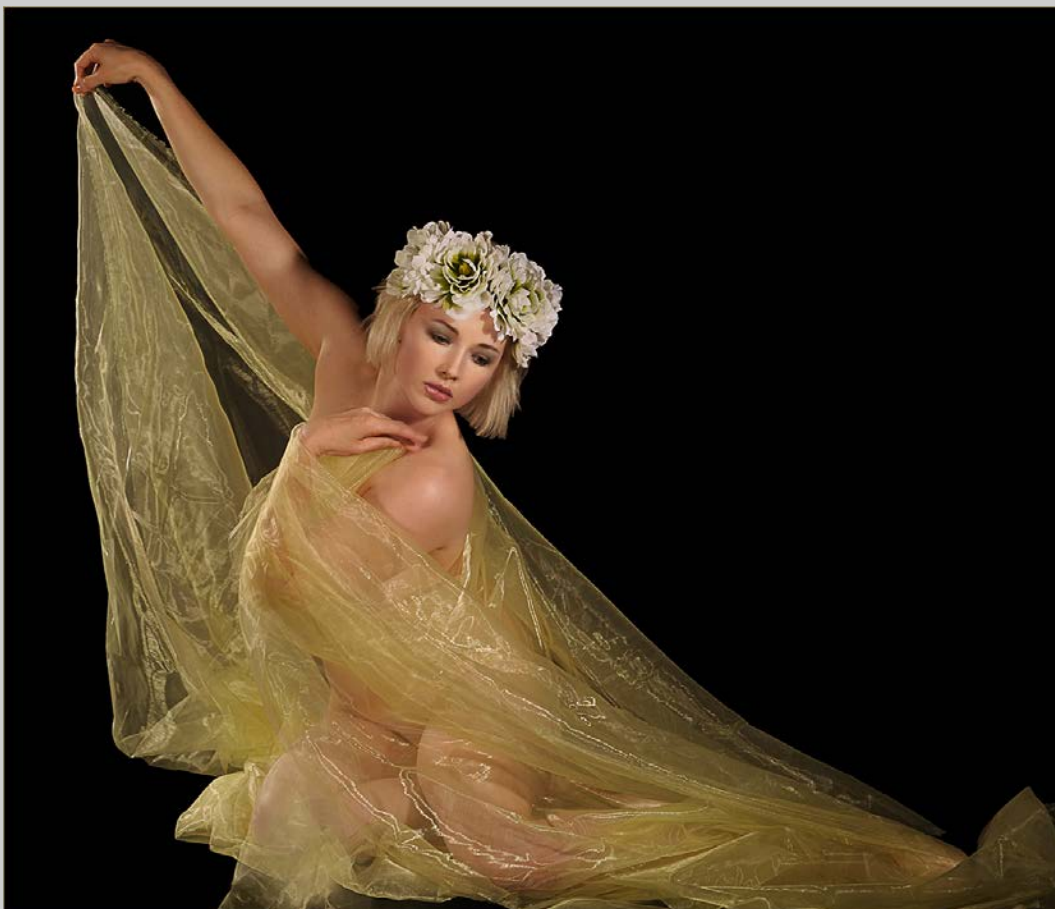
<http://www.pcms-photo.org/exhibitions>



**“DARYLLA”**  
**© BARBARA JENKIN, GMPA, BPSA**  
**2016 S4C International Exhibition of Photography**  
**PID Color General**

PID Color Page 160

<http://www.pcms-photo.org/exhibitions>



**“LEMON LADY”**  
**© BARBARA JENKIN, GMPA, BPSA**  
**2016 S4C International Exhibition of Photography**  
**PID Color General**  
**HM**

PID Color Page 161

<http://www.pcms-photo.org/exhibitions>





**“ZINABAR”**  
**© BARBARA JENKIN, GMPSA, BPSA**  
**2016 S4C International Exhibition of Photography**  
**PID Color General**  
**HM**

PID Color Page 162

<http://www.pcms-photo.org/exhibitions>



**“DARK SECRETS”  
© MALCOLM JENKIN, GMPSA  
2016 S4C International Exhibition of Photography  
PID Color General  
HM**

PID Color Page 163

<http://www.pcms-photo.org/exhibitions>



**“HOLLY 2”**  
**© MALCOLM JENKIN, GMPSA**  
**2016 S4C International Exhibition of Photography**  
**PID Color General**

PID Color Page 164

<http://www.pcms-photo.org/exhibitions>



**“PAIRED WHITE GLOVES”**  
**© MALCOLM JENKIN, GMPSA**  
**2016 S4C International Exhibition of Photography**  
**PID Color General**

PID Color Page 165

<http://www.pcms-photo.org/exhibitions>





**“REKJAVIK ICELAND”**  
**© ABBAS KAPADIA, PPSA, BPSA**  
**2016 S4C International Exhibition of Photography**  
**PID Color Theme (Scapes)**

PID Color Page 166

<http://www.pcms-photo.org/exhibitions>



**“DINNER AUS DEM WALD”  
© JOSEF KASTNER  
2016 S4C International Exhibition of Photography  
PID Color General**

PID Color Page 167

<http://www.pcms-photo.org/exhibitions>



**“KLOSTERINSEL”**  
**© JOSEF KASTNER**  
**2016 S4C International Exhibition of Photography**  
**PID Color Theme (Scapes)**

PID Color Page 168

<http://www.pcms-photo.org/exhibitions>





**“KRUMAU”**  
**© JOSEF KASTNER**  
**2016 S4C International Exhibition of Photography**  
**PID Color Theme (Scapes)**

PID Color Page 169

<http://www.pcms-photo.org/exhibitions>

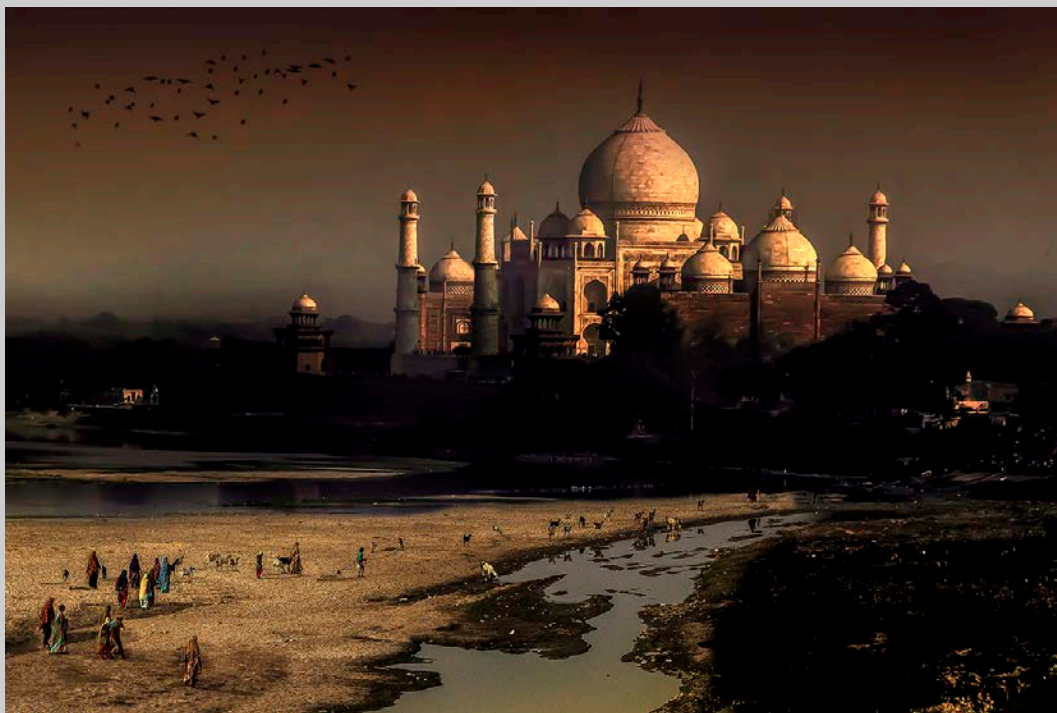




**“TOR ZUM TAJ MAHAL”**  
**© JOSEF KASTNER**  
**2016 S4C International Exhibition of Photography**  
**PID Color General**

PID Color Page 170

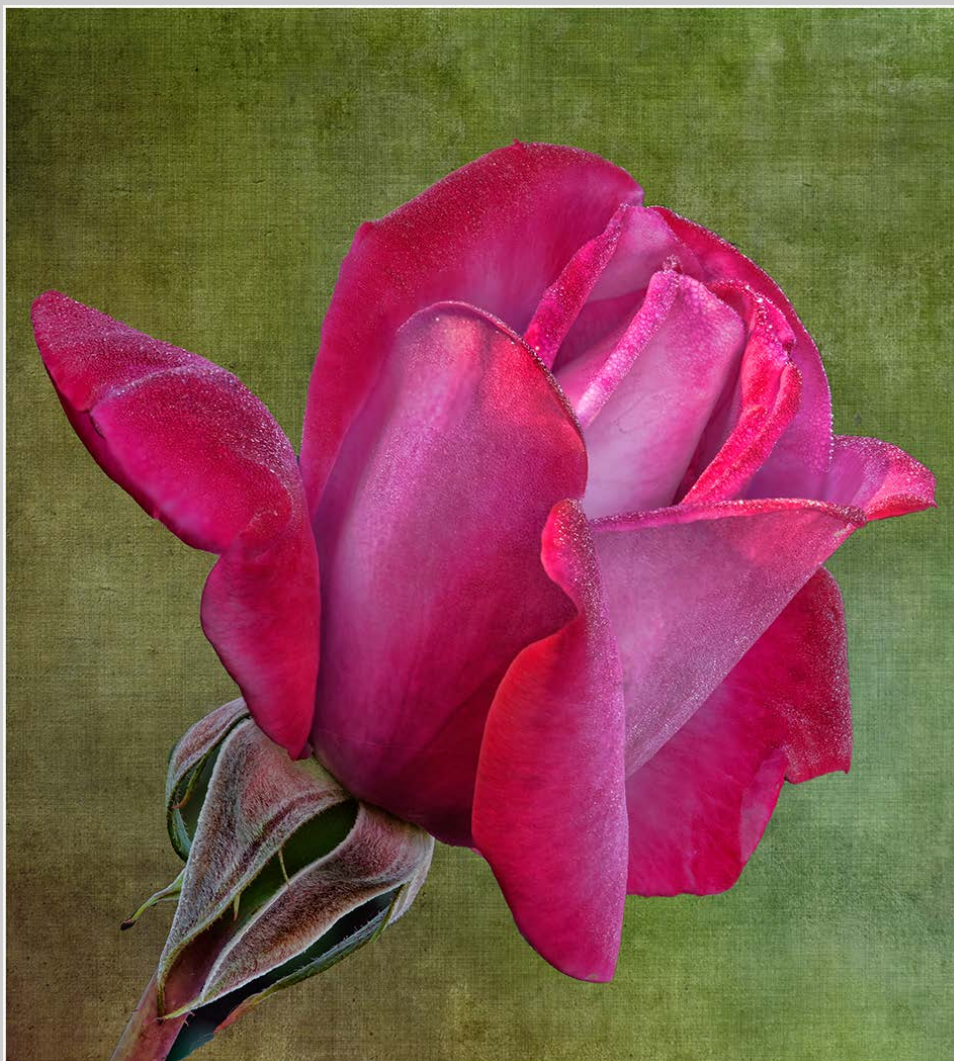
<http://www.pcms-photo.org/exhibitions>



**“WEG ZUM TAJ MAHAL”**  
**© JOSEF KASTNER**  
**2016 S4C International Exhibition of Photography**  
**PID Color Theme (Scapes)**  
**HM**

PID Color Page 171

<http://www.pcms-photo.org/exhibitions>



**“MAGENTA ROSE”  
© FRANCIS KENNEDY, PPSA  
2016 S4C International Exhibition of Photography  
PID Color General**

PID Color Page 172

<http://www.pcms-photo.org/exhibitions>





**“POMMEGRANNETS”**  
**© FRANCIS KENNEDY, PPSA**  
**2016 S4C International Exhibition of Photography**  
**PID Color General**

PID Color Page 173

<http://www.pcms-photo.org/exhibitions>





**“BURROWING OWL ON WATCH”**  
**© IRENE KRAMER**  
**2016 S4C International Exhibition of Photography**  
**PID Color General**

PID Color Page 174

<http://www.pcms-photo.org/exhibitions>



**“GOLDEN EAGLE PORTRAIT”  
© IRENE KRAMER  
2016 S4C International Exhibition of Photography  
PID Color General**

PID Color Page 175

<http://www.pcms-photo.org/exhibitions>



**“GOLDEN TRIANGLE - PITTSBURGH”  
© IRENE KRAMER  
2016 S4C International Exhibition of Photography  
PID Color Theme (Scapes)**

PID Color Page 176

<http://www.pcms-photo.org/exhibitions>



**“MOONRISE OVER MITTENS”  
© IRENE KRAMER  
2016 S4C International Exhibition of Photography  
PID Color Theme (Scapes)**

PID Color Page 177

<http://www.pcms-photo.org/exhibitions>





**“SAIL AT SUNRISE #2”  
© MIN-SHENG KU, MPSA  
2016 S4C International Exhibition of Photography  
PID Color Theme (Scapes)**

PID Color Page 178

<http://www.pcms-photo.org/exhibitions>

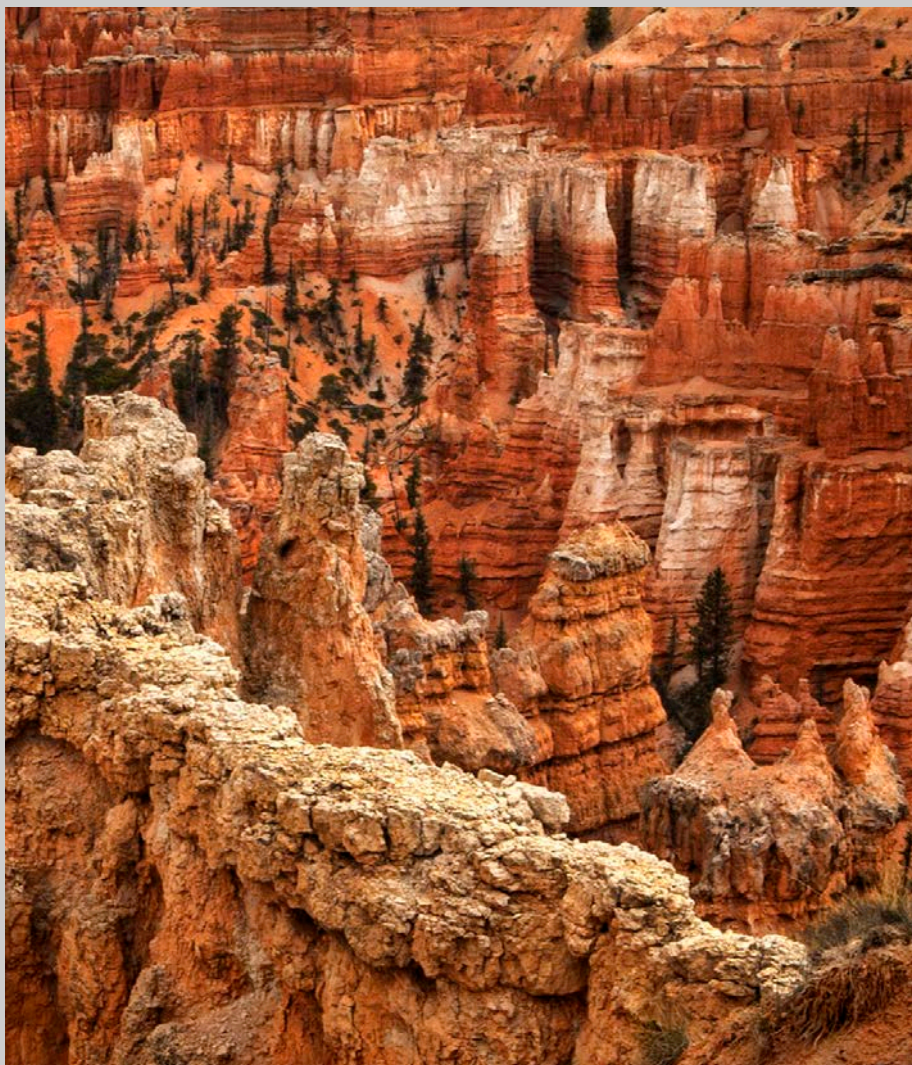


**“BARN WITH PAINTED HORSE”  
© BARBARA KUEBLER, MPSA  
2016 S4C International Exhibition of Photography  
PID Color General**

PID Color Page 179

<http://www.pcms-photo.org/exhibitions>





**“LOOKING INTO BRYCE”  
© BARBARA KUEBLER, MPSA  
2016 S4C International Exhibition of Photography  
PID Color Theme (Scapes)**

PID Color Page 180

<http://www.pcms-photo.org/exhibitions>



**“MAJESTIC ELK”**  
**© BARBARA KUEBLER, MPSA**  
**2016 S4C International Exhibition of Photography**  
**PID Color General**

PID Color Page 181

<http://www.pcms-photo.org/exhibitions>





**“BUDDHA RELIC TEMPLE”**  
**© YONG LIANG KUEK**  
**2016 S4C International Exhibition of Photography**  
**PID Color Theme (Scapes)**

PID Color Page 182

<http://www.pcms-photo.org/exhibitions>



**“CITY BY THE RIVER”  
© YONG LIANG KUEK  
2016 S4C International Exhibition of Photography  
PID Color Theme (Scapes)  
S4C Bronze**

PID Color Page 183

<http://www.pcms-photo.org/exhibitions>



**“MBS BY NIGHT”**  
**© YONG LIANG KUEK**  
**2016 S4C International Exhibition of Photography**  
**PID Color Theme (Scapes)**  
**S4C Silver**

PID Color Page 184

<http://www.pcms-photo.org/exhibitions>





**“HUSKY RACER 6”  
© PHILLIP KWAN, GMPSA  
2016 S4C International Exhibition of Photography  
PID Color General**

PID Color Page 185

<http://www.pcms-photo.org/exhibitions>





**“FLYING DANCE”**  
**© SIEW KONG THOMAS LAM**  
**2016 S4C International Exhibition of Photography**  
**PID Color General**

PID Color Page 186

<http://www.pcms-photo.org/exhibitions>



**“HOLLY LUONG SWEET SMILE”**  
**© THANH LAM, PPSA**  
**2016 S4C International Exhibition of Photography**  
**PID Color General**

PID Color Page 187

<http://www.pcms-photo.org/exhibitions>



**“LANIE VAIL AND JEWELS”  
© THANH LAM, PPSA  
2016 S4C International Exhibition of Photography  
PID Color General**

PID Color Page 188

<http://www.pcms-photo.org/exhibitions>



**“THAO KRISTINE TRAN”**  
**© THANH LAM, PPSA**  
**2016 S4C International Exhibition of Photography**  
**PID Color General**

PID Color Page 189

<http://www.pcms-photo.org/exhibitions>





**“RICE FIELDS AT THE HILL”**  
**© WENDY WAI MAN LAM**  
**2016 S4C International Exhibition of Photography**  
**PID Color Theme (Scapes)**

PID Color Page 190

<http://www.pcms-photo.org/exhibitions>



**“SUNSET AT HARBOR CITY”  
© WENDY WAI MAN LAM  
2016 S4C International Exhibition of Photography  
PID Color Theme (Scapes)**

PID Color Page 191

<http://www.pcms-photo.org/exhibitions>



**“SUNSET FISHING”**  
**© WENDY WAI MAN LAM**  
**2016 S4C International Exhibition of Photography**  
**PID Color General**

PID Color Page 192

<http://www.pcms-photo.org/exhibitions>



**“SOFT CURVES”**  
**© DEE LANGEVIN, MPSA**  
**2016 S4C International Exhibition of Photography**  
**PID Color General**

PID Color Page 193

<http://www.pcms-photo.org/exhibitions>





**“AUTUMN LIGHT”**  
**© CLAUDIA XIAOLI LEE**  
**2016 S4C International Exhibition of Photography**  
**PID Color Theme (Scapes)**

PID Color Page 194

<http://www.pcms-photo.org/exhibitions>



**“ECSTASY”**  
**© CLAUDIA XIAOLI LEE**  
**2016 S4C International Exhibition of Photography**  
**PID Color General**  
**S4C Silver**

PID Color Page 195

<http://www.pcms-photo.org/exhibitions>



**“FISHING NETS”**  
**© CLAUDIA XIAOLI LEE**  
**2016 S4C International Exhibition of Photography**  
**PID Color General**  
**HM**

PID Color Page 196

<http://www.pcms-photo.org/exhibitions>



**“SAILING ALONG”**  
**© CLAUDIA XIAOLI LEE**  
**2016 S4C International Exhibition of Photography**  
**PID Color General**

PID Color Page 197

<http://www.pcms-photo.org/exhibitions>





**“SMILING MORN”**  
**© CLAUDIA XIAOLI LEE**  
**2016 S4C International Exhibition of Photography**  
**PID Color Theme (Scapes)**

PID Color Page 198

<http://www.pcms-photo.org/exhibitions>



**“TRANQUILITY”**  
**© CLAUDIA XIAOLI LEE**  
**2016 S4C International Exhibition of Photography**  
**PID Color Theme (Scapes)**

PID Color Page 199

<http://www.pcms-photo.org/exhibitions>



**“DRAMA LIFE”  
© KEN LEE  
2016 S4C International Exhibition of Photography  
PID Color General**

PID Color Page 200

<http://www.pcms-photo.org/exhibitions>



**“FALL”**  
**© KEN LEE**  
**2016 S4C International Exhibition of Photography**  
**PID Color Theme (Scapes)**

PID Color Page 201

<http://www.pcms-photo.org/exhibitions>





**“GOLDEN WHEATLAND”  
© KEN LEE  
2016 S4C International Exhibition of Photography  
PID Color Theme (Scapes)**

PID Color Page 202

<http://www.pcms-photo.org/exhibitions>



**“MORNING LIGHT”**  
© KEN LEE  
2016 S4C International Exhibition of Photography  
PID Color Theme (Scapes)

PID Color Page 203

<http://www.pcms-photo.org/exhibitions>



**“NUBBLE LIGHTHOUSE”**  
**© KEN LEE**  
**2016 S4C International Exhibition of Photography**  
**PID Color Theme (Scapes)**  
**HM**

PID Color Page 204

<http://www.pcms-photo.org/exhibitions>





**“CITY AT NIGHT”**  
**© WING CHUNG KENNETH LEUNG**  
**2016 S4C International Exhibition of Photography**  
**PID Color Theme (Scapes)**

PID Color Page 205

<http://www.pcms-photo.org/exhibitions>





**“GRINDELWALD”**  
**© WING CHUNG KENNETH LEUNG**  
**2016 S4C International Exhibition of Photography**  
**PID Color Theme (Scapes)**

PID Color Page 206

<http://www.pcms-photo.org/exhibitions>



**“MAGIC CITY”**  
**© WING CHUNG KENNETH LEUNG**  
**2016 S4C International Exhibition of Photography**  
**PID Color Theme (Scapes)**

PID Color Page 207

<http://www.pcms-photo.org/exhibitions>



**“IT IS GOING TO RAIN”**  
**© GUANGJIAN LI**  
**2016 S4C International Exhibition of Photography**  
**PID Color General**

PID Color Page 208

<http://www.pcms-photo.org/exhibitions>





**“FISHING NET\_THREE”  
© LEONG KIAT LIM, EPSA  
2016 S4C International Exhibition of Photography  
PID Color General**

PID Color Page 209

<http://www.pcms-photo.org/exhibitions>





**“FOUR GIRLS CROSSING SAND DUNE”  
© LEONG KIAT LIM, EPSA  
2016 S4C International Exhibition of Photography  
PID Color General**

PID Color Page 210

<http://www.pcms-photo.org/exhibitions>



**“A BLAZING PRAIRIE FLRE”**  
© PING LIN  
2016 S4C International Exhibition of Photography  
PID Color General

PID Color Page 211

<http://www.pcms-photo.org/exhibitions>



**“A FLOWER MADE OF STEEL”**  
**© PING LIN**  
**2016 S4C International Exhibition of Photography**  
**PID Color General**

PID Color Page 212

<http://www.pcms-photo.org/exhibitions>





**“BOILER PLANT IMPRESSIONS”**  
**© PING LIN**  
**2016 S4C International Exhibition of Photography**  
**PID Color General**

PID Color Page 213

<http://www.pcms-photo.org/exhibitions>





**“NIGHT AND LIGHT”  
© WOLFGANG LIN  
2016 S4C International Exhibition of Photography  
PID Color Theme (Scapes)**

PID Color Page 214

<http://www.pcms-photo.org/exhibitions>



**“AUSTRALIA DAY 2”  
© YONGXIONG LING  
2016 S4C International Exhibition of Photography  
PID Color Theme (Scapes)**

PID Color Page 215

<http://www.pcms-photo.org/exhibitions>



**“MORNING 20”  
© YONGXIONG LING  
2016 S4C International Exhibition of Photography  
PID Color Theme (Scapes)**

PID Color Page 216

<http://www.pcms-photo.org/exhibitions>



**“RODEO OPEN 3”  
© YONGXIONG LING  
2016 S4C International Exhibition of Photography  
PID Color General**

PID Color Page 217

<http://www.pcms-photo.org/exhibitions>





**"SAILS 2"**  
**© YONGXIONG LING**  
**2016 S4C International Exhibition of Photography**  
**PID Color Theme (Scapes)**  
**S4C Gold**

PID Color Page 218

<http://www.pcms-photo.org/exhibitions>



**“SURFING OPEN”**  
**© YONGXIONG LING**  
**2016 S4C International Exhibition of Photography**  
**PID Color General**  
**HM**

PID Color Page 219

<http://www.pcms-photo.org/exhibitions>



**“DURANGO TRAIN”  
© JOHN LIVOTI  
2016 S4C International Exhibition of Photography  
PID Color General**

PID Color Page 220

<http://www.pcms-photo.org/exhibitions>



**“PAWNS IN A ROW”**  
**© JOHN LIVOTI**  
**2016 S4C International Exhibition of Photography**  
**PID Color General**

PID Color Page 221

<http://www.pcms-photo.org/exhibitions>

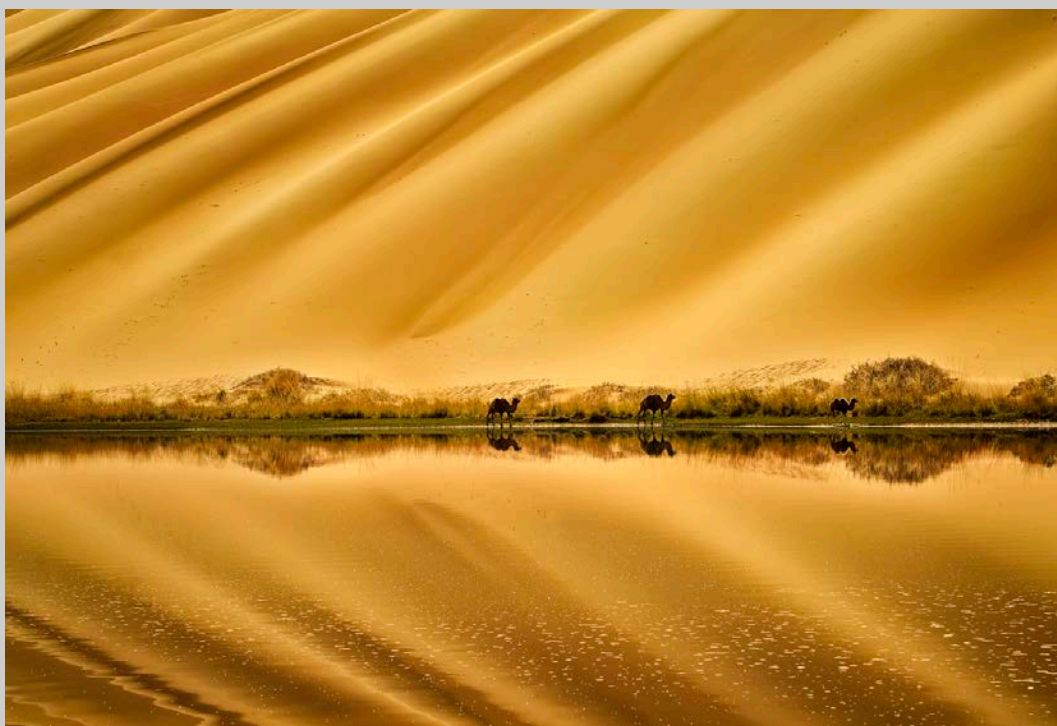




**“HIGH COUNTRY FLOWER SHOW”  
© FRED LUHMAN, EPSA  
2016 S4C International Exhibition of Photography  
PID Color Theme (Scapes)**

PID Color Page 222

<http://www.pcms-photo.org/exhibitions>



**“BIG DESERT”  
© WENJIE**

**LUO  
2016 S4C International Exhibition of Photography  
PID Color Theme (Scapes)**

PID Color Page 223

<http://www.pcms-photo.org/exhibitions>



**“BREAK OUT”  
© WENJIE**

**LUO  
2016 S4C International Exhibition of Photography  
PID Color Theme (Scapes)**

PID Color Page 224

<http://www.pcms-photo.org/exhibitions>



**“BLUEBERRIES”  
© CINDY LYNCH  
2016 S4C International Exhibition of Photography  
PID Color General  
HM**

PID Color Page 225

<http://www.pcms-photo.org/exhibitions>





**“DESOTO FLUID DIVE”**  
© CINDY LYNCH  
2016 S4C International Exhibition of Photography  
PID Color General

PID Color Page 226

<http://www.pcms-photo.org/exhibitions>



**“OLD HOONAH FISHING BOAT”  
© CINDY LYNCH  
2016 S4C International Exhibition of Photography  
PID Color General**

PID Color Page 227

<http://www.pcms-photo.org/exhibitions>





**“POCKET WATCH PARTS”**  
© CINDY LYNCH  
2016 S4C International Exhibition of Photography  
PID Color General  
HM

PID Color Page 228

<http://www.pcms-photo.org/exhibitions>



**“GREY DAWN”**  
**© MICHAEL MAGUIRE**  
**2016 S4C International Exhibition of Photography**  
**PID Color General**

PID Color Page 229

<http://www.pcms-photo.org/exhibitions>





**“YELLOW HILL”  
© MICHAEL MAGUIRE  
2016 S4C International Exhibition of Photography  
PID Color General**

PID Color Page 230

<http://www.pcms-photo.org/exhibitions>



**“CHURCH OF THE TRANSFIGURATION”  
© ROSALIE MAHONEY  
2016 S4C International Exhibition of Photography  
PID Color General**

PID Color Page 231

<http://www.pcms-photo.org/exhibitions>



**“TAMPA AT NIGHT”  
© ROSALIE MAHONEY  
2016 S4C International Exhibition of Photography  
PID Color General**

PID Color Page 232

<http://www.pcms-photo.org/exhibitions>



**“CLOUDS AT GRAND CANYON”**  
**© LINGYUN MAO**  
**2016 S4C International Exhibition of Photography**  
**PID Color General**

PID Color Page 233

<http://www.pcms-photo.org/exhibitions>





**“ICE”**  
**© LINGYUN MAO**  
**2016 S4C International Exhibition of Photography**  
**PID Color General**  
**PSA Best of Show Gold**

PID Color Page 234

<http://www.pcms-photo.org/exhibitions>



**“ICE AND SEA”**  
**© LINGYUN MAO**  
**2016 S4C International Exhibition of Photography**  
**PID Color General**

PID Color Page 235

<http://www.pcms-photo.org/exhibitions>



**“BRIDGE AND BUILDING”**  
**© LARRY MARS**  
**2016 S4C International Exhibition of Photography**  
**PID Color General**

PID Color Page 236

<http://www.pcms-photo.org/exhibitions>



**“MESQUITE DUNES”  
© LARRY MARS  
2016 S4C International Exhibition of Photography  
PID Color Theme (Scapes)**

PID Color Page 237

<http://www.pcms-photo.org/exhibitions>





**“QUARTET FLYOVER”**  
**© LARRY MARS**  
**2016 S4C International Exhibition of Photography**  
**PID Color Theme (Scapes)**

PID Color Page 238

<http://www.pcms-photo.org/exhibitions>



**“VAL D'ORCIA”**  
**© LARRY MARS**  
**2016 S4C International Exhibition of Photography**  
**PID Color Theme (Scapes)**

PID Color Page 239

<http://www.pcms-photo.org/exhibitions>



**“VICTORIA SKYLINE”  
© LARRY MARS  
2016 S4C International Exhibition of Photography  
PID Color Theme (Scapes)**

PID Color Page 240

<http://www.pcms-photo.org/exhibitions>





**“SYDNEY HARBOR BRIDGE NEAR SUNSET”  
© NORMA MASTIN, FPSA, MPSA  
2016 S4C International Exhibition of Photography  
PID Color Theme (Scapes)**

PID Color Page 241

<http://www.pcms-photo.org/exhibitions>





**“COLMAN PANORAMA 1”  
© DEE MCMILLAN  
2016 S4C International Exhibition of Photography  
PID Color General**

PID Color Page 242

<http://www.pcms-photo.org/exhibitions>



**“ENGLISH PITCHER AND FRUIT”**  
**© DEE MCMILLAN**  
**2016 S4C International Exhibition of Photography**  
**PID Color General**

PID Color Page 243

<http://www.pcms-photo.org/exhibitions>



**“GRAND CANYON”  
© DEE MCMILLAN  
2016 S4C International Exhibition of Photography  
PID Color General**

PID Color Page 244

<http://www.pcms-photo.org/exhibitions>



**“HOAR FROST DUO”  
© DEE MCMILLAN  
2016 S4C International Exhibition of Photography  
PID Color Theme (Scapes)**

PID Color Page 245

<http://www.pcms-photo.org/exhibitions>





**“USELESS BAY RHODE”  
© DEE MCMILLAN  
2016 S4C International Exhibition of Photography  
PID Color General**

PID Color Page 246

<http://www.pcms-photo.org/exhibitions>



**“WESTGATE SHOPPING PHOENIX”**  
**© DEE MCMILLAN**  
**2016 S4C International Exhibition of Photography**  
**PID Color Theme (Scapes)**

PID Color Page 247

<http://www.pcms-photo.org/exhibitions>



**“AROUND THE TURN”**  
**© ELENA MCTIGHE, FPSA, MPSA**  
**2016 S4C International Exhibition of Photography**  
**PID Color General**

PID Color Page 248

<http://www.pcms-photo.org/exhibitions>





**“PALOUSE FARMS”  
© ELENA MCTIGHE, FPSA, MPSA  
2016 S4C International Exhibition of Photography  
PID Color Theme (Scapes)**

PID Color Page 249

<http://www.pcms-photo.org/exhibitions>





**“ANTELOPE CANYON 11”**  
**© VOLKER MEINBERG, MPSA**  
**2016 S4C International Exhibition of Photography**  
**PID Color General**

PID Color Page 250

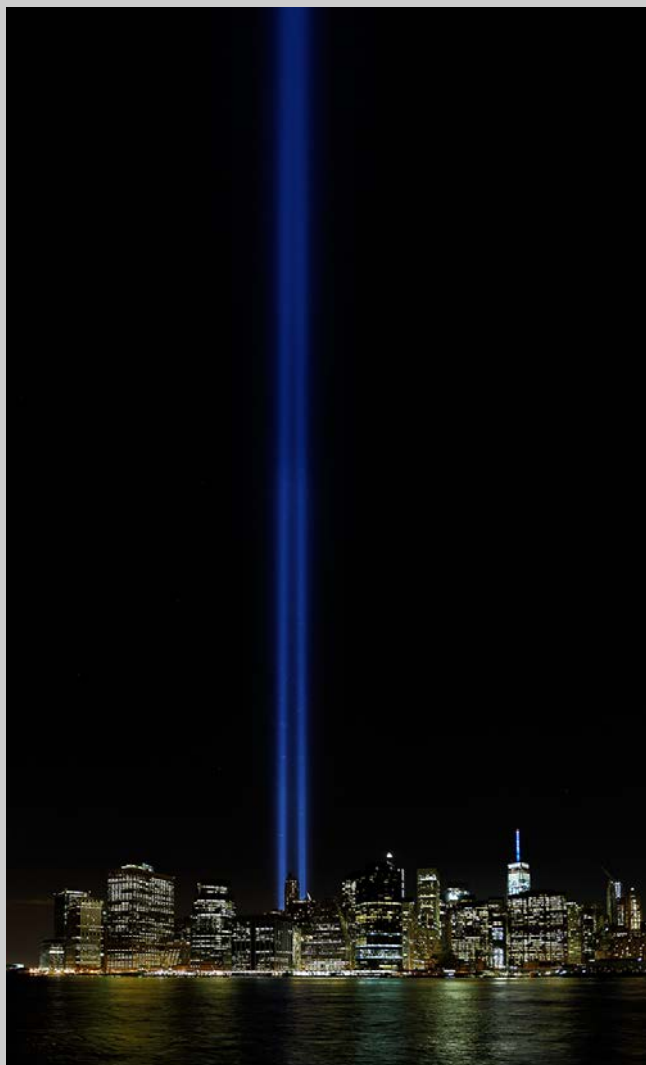
<http://www.pcms-photo.org/exhibitions>



**“TOP OF THE ROCK 3”**  
**© VOLKER MEINBERG, MPSA**  
**2016 S4C International Exhibition of Photography**  
**PID Color Theme (Scapes)**  
**HM**

PID Color Page 251

<http://www.pcms-photo.org/exhibitions>



**“TRIBUTE IN LIGHT 2015-2”  
© VOLKER MEINBERG, MPSA  
2016 S4C International Exhibition of Photography  
PID Color Theme (Scapes)**

PID Color Page 252

<http://www.pcms-photo.org/exhibitions>



**“FLOWERS GROW IN THE DARNDDEST PLACES”**  
**© HAZEL MEREDITH, APSA**  
**2016 S4C International Exhibition of Photography**  
**PID Color General**

PID Color Page 253

<http://www.pcms-photo.org/exhibitions>





**“AUCKLAND AFTER DARK”  
© HOLLY MOORE  
2016 S4C International Exhibition of Photography  
PID Color Theme (Scapes)**

PID Color Page 254

<http://www.pcms-photo.org/exhibitions>



**“BY THE SEASHORE”  
© HOLLY MOORE  
2016 S4C International Exhibition of Photography  
PID Color Theme (Scapes)**

PID Color Page 255

<http://www.pcms-photo.org/exhibitions>



**“MR. STOIC”  
© HOLLY MOORE  
2016 S4C International Exhibition of Photography  
PID Color General**

PID Color Page 256

<http://www.pcms-photo.org/exhibitions>

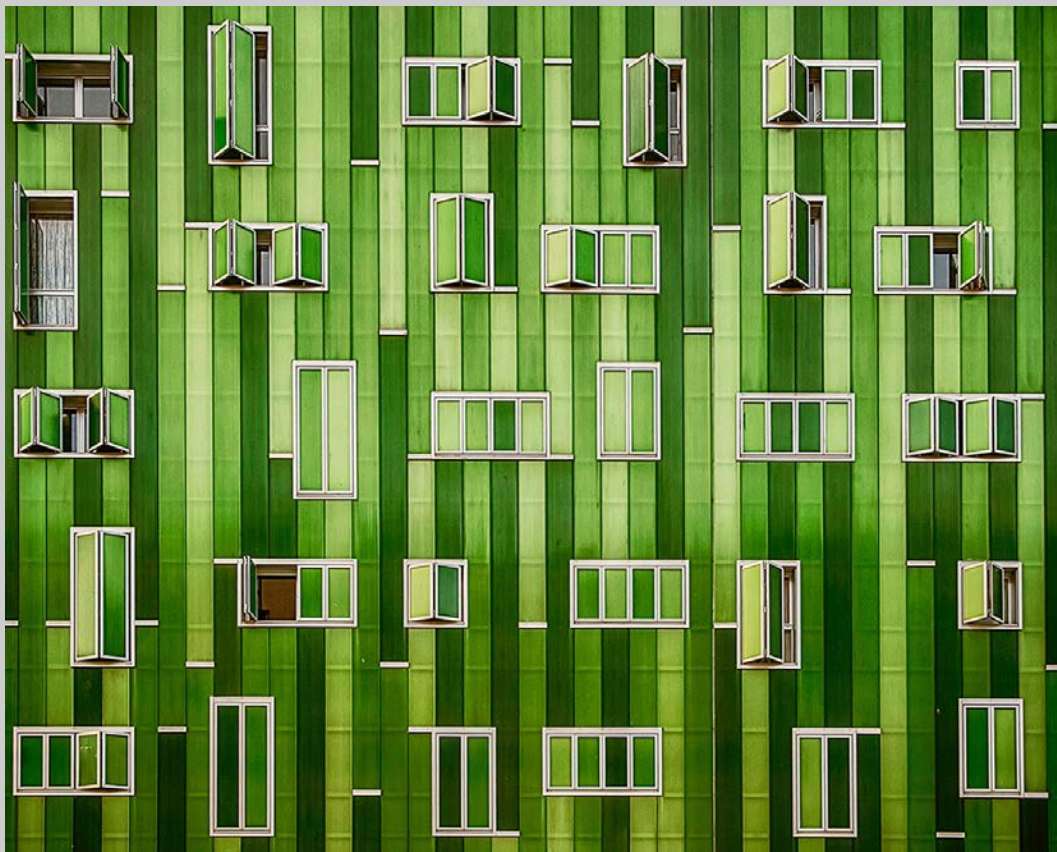


**“ROTTERDAM”**  
**© VICENTE MORAGA COSTOSO**  
**2016 S4C International Exhibition of Photography**  
**PID Color Theme (Scapes)**

PID Color Page 257

<http://www.pcms-photo.org/exhibitions>





**“SYMPHONY IN GREEN”**  
**© VICENTE MORAGA COSTOSO**  
**2016 S4C International Exhibition of Photography**  
**PID Color General**

PID Color Page 258

<http://www.pcms-photo.org/exhibitions>



**“JANETTE”**  
**© NOEL MORGAN**  
**2016 S4C International Exhibition of Photography**  
**PID Color General**

PID Color Page 259

<http://www.pcms-photo.org/exhibitions>



**“POWER PERSONIFIED”**  
**© NOEL MORGAN**  
**2016 S4C International Exhibition of Photography**  
**PID Color General**

PID Color Page 260

<http://www.pcms-photo.org/exhibitions>



**“THE PENITENT”  
© NOEL MORGAN  
2016 S4C International Exhibition of Photography  
PID Color General**

PID Color Page 261

<http://www.pcms-photo.org/exhibitions>





**“DUSTY OLD TOME”  
© PETER MORGAN  
2016 S4C International Exhibition of Photography  
PID Color General  
HM**

PID Color Page 262

<http://www.pcms-photo.org/exhibitions>



**“1936 DODGE”  
© KEN MURPHY, EPSA  
2016 S4C International Exhibition of Photography  
PID Color General**

PID Color Page 263

<http://www.pcms-photo.org/exhibitions>



**“BLUE ANGELS MIXED UP”**  
**© KEN MURPHY, EPSA**  
**2016 S4C International Exhibition of Photography**  
**PID Color General**

PID Color Page 264

<http://www.pcms-photo.org/exhibitions>



**“VENETIAN STREET SCENE”**  
**© IRA NEMEROFF, MPSA**  
**2016 S4C International Exhibition of Photography**  
**PID Color Theme (Scapes)**

PID Color Page 265

<http://www.pcms-photo.org/exhibitions>





**“SILENT NIGHT”  
© SAU FONG NEO  
2016 S4C International Exhibition of Photography  
PID Color General**

PID Color Page 266

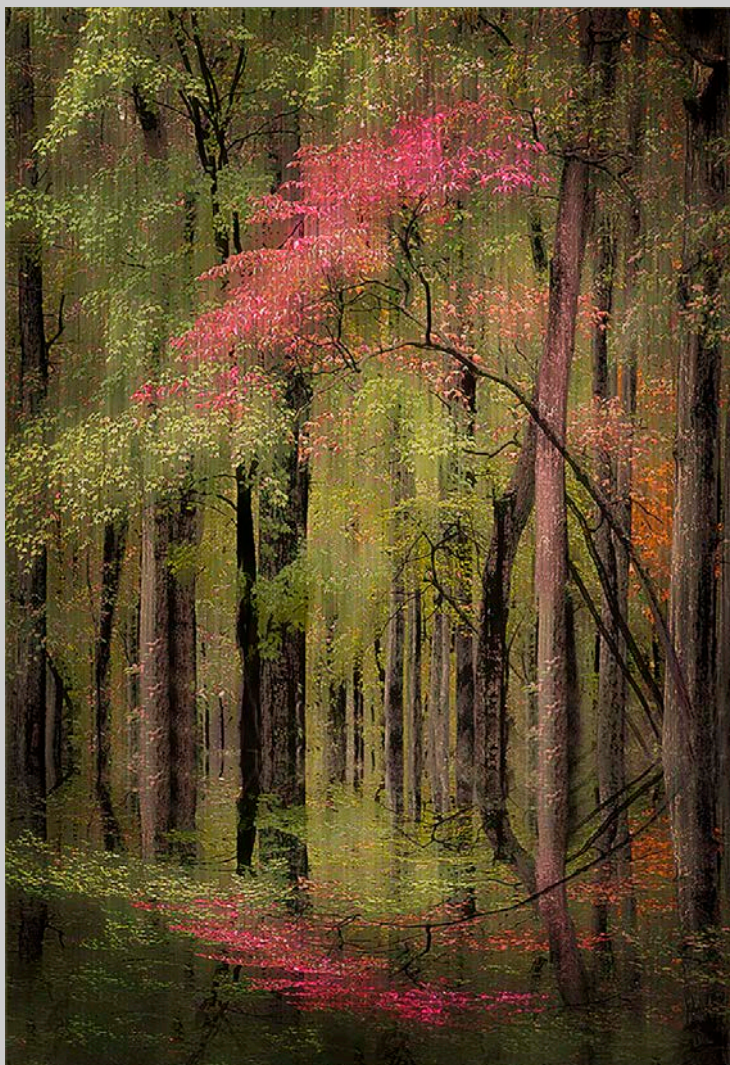
<http://www.pcms-photo.org/exhibitions>



**“50TH ANNIVERSARY OF THE ARCH”  
© KATHLEEN O'DONNELL  
2016 S4C International Exhibition of Photography  
PID Color Theme (Scapes)  
HM**

PID Color Page 267

<http://www.pcms-photo.org/exhibitions>



**"AUTUMN FANTASY"**  
**© KATHLEEN O'DONNELL**  
**2016 S4C International Exhibition of Photography**  
**PID Color General**  
**S4C Bronze**

PID Color Page 268

<http://www.pcms-photo.org/exhibitions>



**“FOUR KAYAKS”**  
**© KATHLEEN O'DONNELL**  
**2016 S4C International Exhibition of Photography**  
**PID Color Theme (Scapes)**  
**HM**

PID Color Page 269

<http://www.pcms-photo.org/exhibitions>





**“INDUSTRIAL SCAPE WITH MOON”**  
**© KATHLEEN O'DONNELL**  
**2016 S4C International Exhibition of Photography**  
**PID Color Theme (Scapes)**  
**Judge's Choice**

PID Color Page 270

<http://www.pcms-photo.org/exhibitions>



**“OLD COURTHOUSE 4TH”  
© KATHLEEN O'DONNELL  
2016 S4C International Exhibition of Photography  
PID Color Theme (Scapes)**

PID Color Page 271

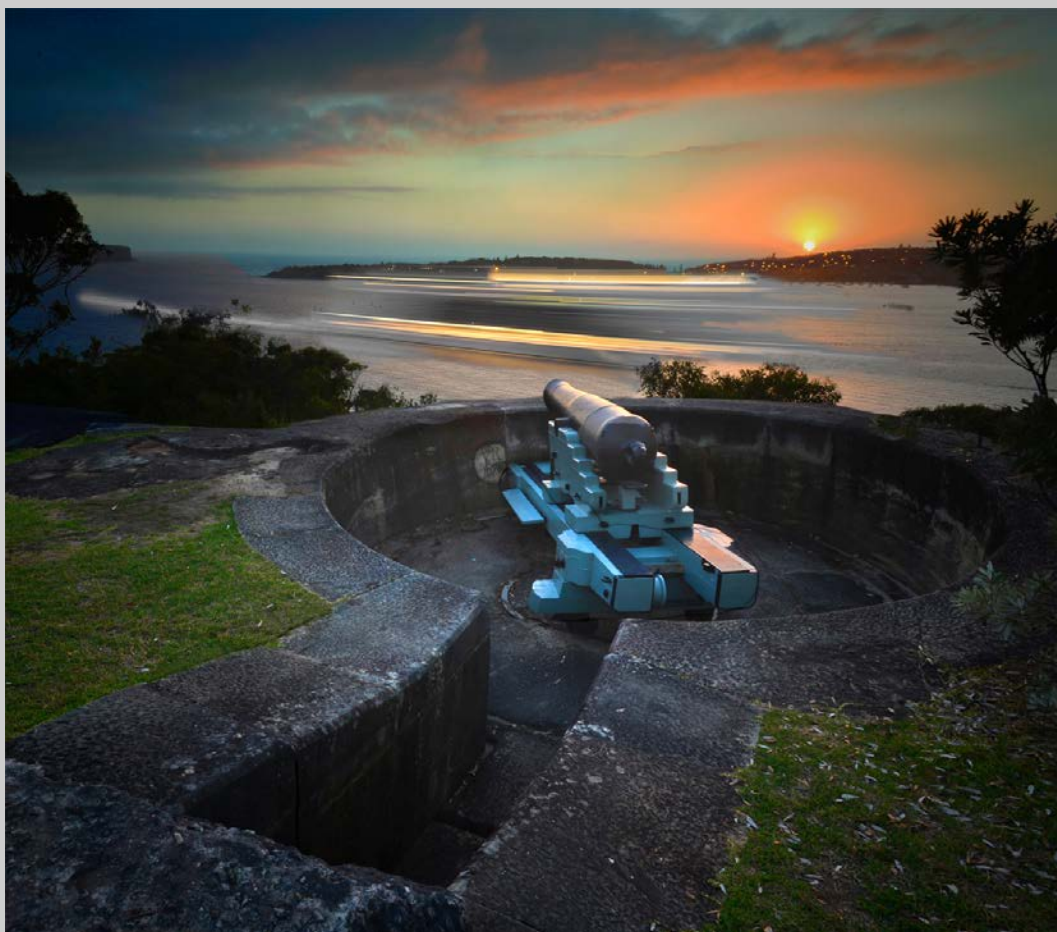
<http://www.pcms-photo.org/exhibitions>



**“GET READY TO RUMBLE”  
© DAVID OSBERG, EPSA  
2016 S4C International Exhibition of Photography  
PID Color General**

PID Color Page 272

<http://www.pcms-photo.org/exhibitions>

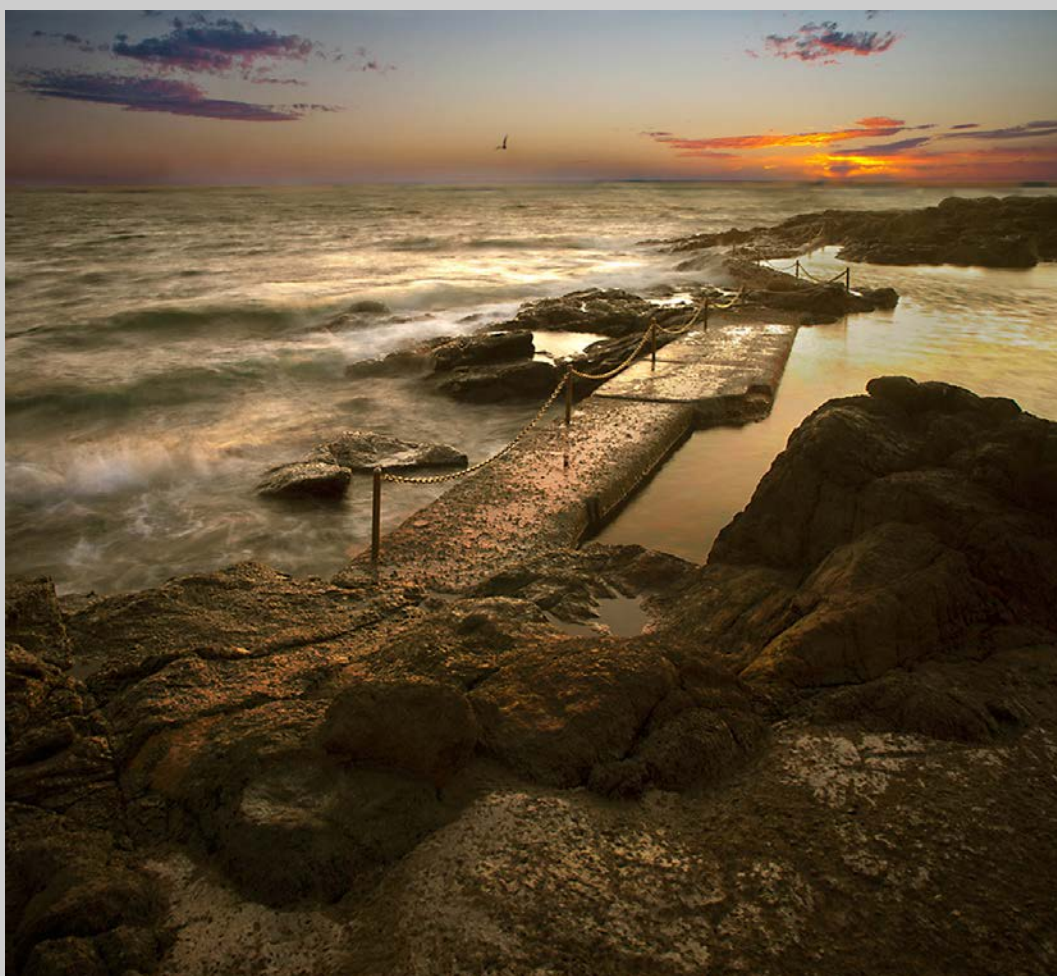


**“GUNRISE 6”**  
**© RAY PAPULIS**  
**2016 S4C International Exhibition of Photography**  
**PID Color Theme (Scapes)**

PID Color Page 273

<http://www.pcms-photo.org/exhibitions>





**“KIAMA POOL 1”  
© RAY PAPULIS  
2016 S4C International Exhibition of Photography  
PID Color Theme (Scapes)**

PID Color Page 274

<http://www.pcms-photo.org/exhibitions>



**“BLEEDING HEART”**  
**© NANCY PARKER**  
**2016 S4C International Exhibition of Photography**  
**PID Color General**

PID Color Page 275

<http://www.pcms-photo.org/exhibitions>



**“RED CHERRIES”**  
**© ELIZABETH PASSUELLO**  
**2016 S4C International Exhibition of Photography**  
**PID Color General**

PID Color Page 276

<http://www.pcms-photo.org/exhibitions>

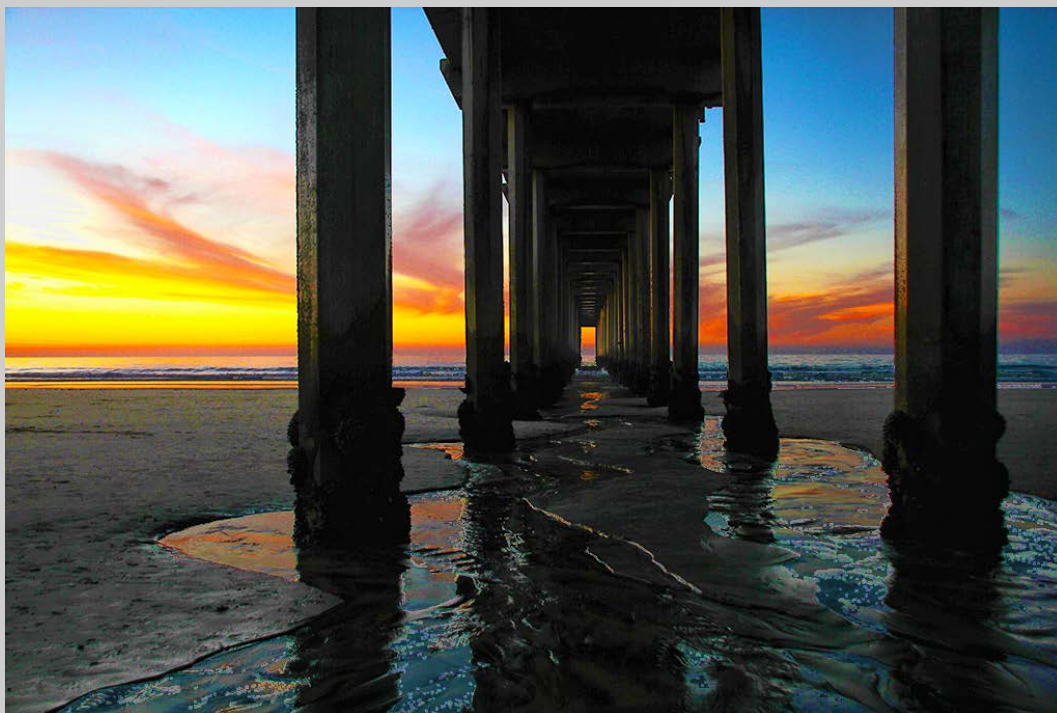


**“HUNTINGTON BEACH PIER AT SUNSET”  
© DIANE PECK  
2016 S4C International Exhibition of Photography  
PID Color Theme (Scapes)**

PID Color Page 277

<http://www.pcms-photo.org/exhibitions>





**“SCRIPPS PIER SUNSET”  
© DIANE PECK  
2016 S4C International Exhibition of Photography  
PID Color Theme (Scapes)**

PID Color Page 278

<http://www.pcms-photo.org/exhibitions>



**“THE WAY THEY WERE”  
© DIANE PECK  
2016 S4C International Exhibition of Photography  
PID Color General**

PID Color Page 279

<http://www.pcms-photo.org/exhibitions>



**“BENIJO”**  
**© ALBERT PEER**  
**2016 S4C International Exhibition of Photography**  
**PID Color Theme (Scapes)**

PID Color Page 280

<http://www.pcms-photo.org/exhibitions>

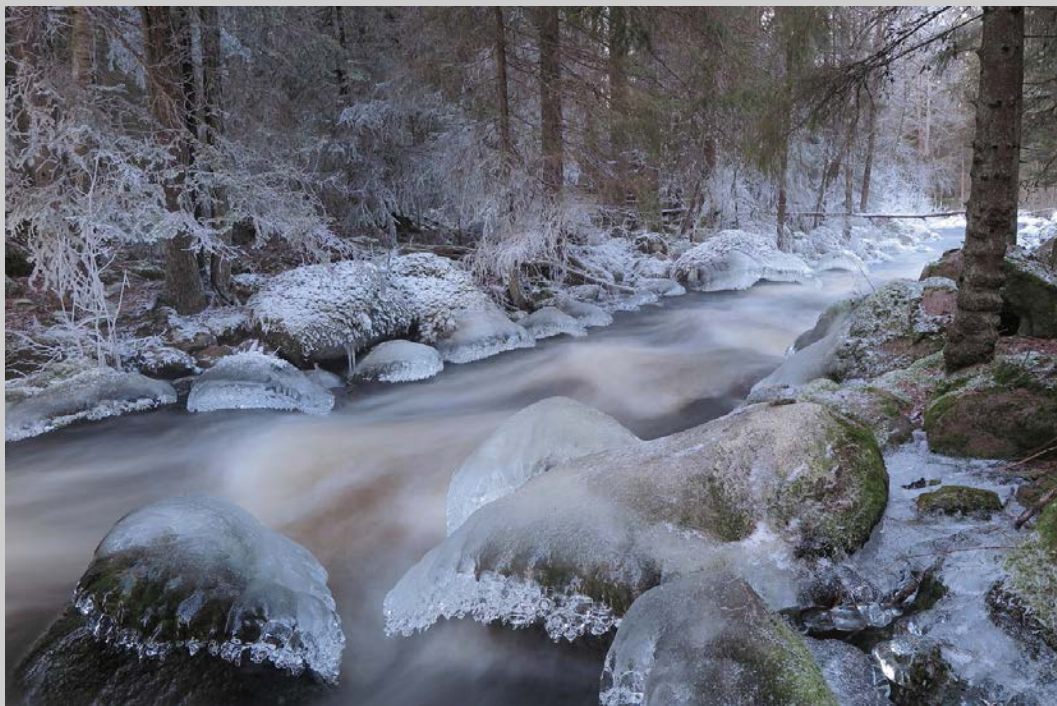


**“FORBIDDING COASTLINE”**  
**© ALBERT PEER**  
**2016 S4C International Exhibition of Photography**  
**PID Color Theme (Scapes)**

PID Color Page 281

<http://www.pcms-photo.org/exhibitions>

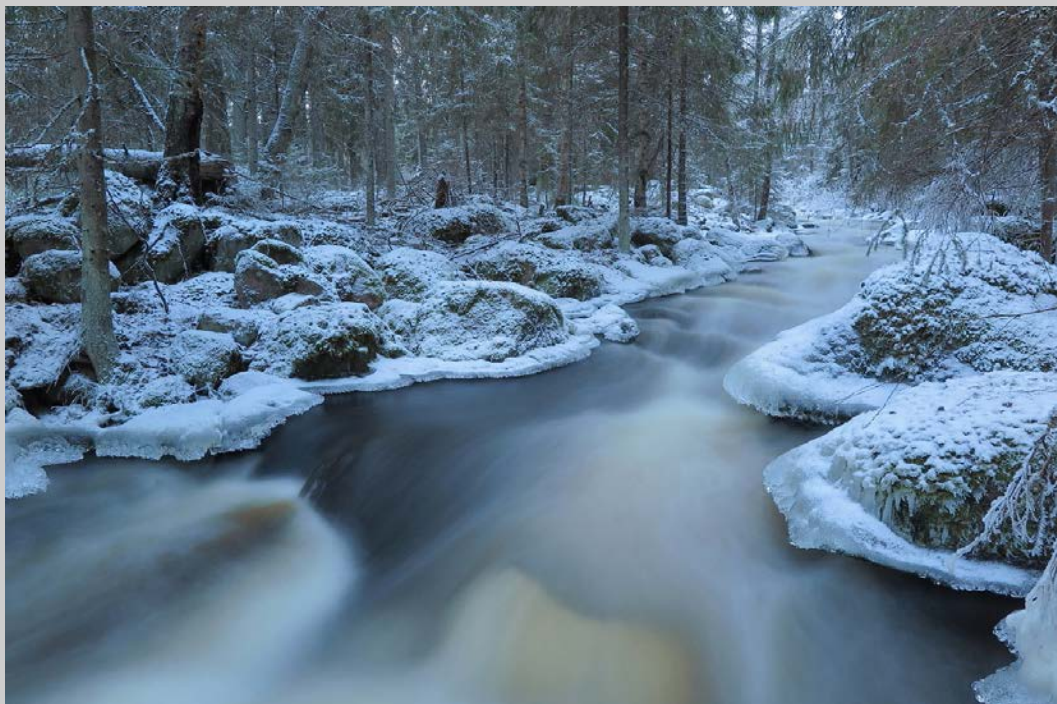




**“FREEZING BROOK”  
© SEPPO PELTONEN  
2016 S4C International Exhibition of Photography  
PID Color Theme (Scapes)  
Judge’s Choice**

PID Color Page 282

<http://www.pcms-photo.org/exhibitions>



**“FREEZING BROOK 4”**  
**© SEPPO PELTONEN**  
**2016 S4C International Exhibition of Photography**  
**PID Color Theme (Scapes)**

PID Color Page 283

<http://www.pcms-photo.org/exhibitions>



**“OCTOBER MORNING 1501”  
© SEPPO PELTONEN  
2016 S4C International Exhibition of Photography  
PID Color Theme (Scapes)**

PID Color Page 284

<http://www.pcms-photo.org/exhibitions>



**“NIGHT OF HONGKONG”  
© JIONGXIN PENG  
2016 S4C International Exhibition of Photography  
PID Color Theme (Scapes)**

PID Color Page 285

<http://www.pcms-photo.org/exhibitions>





**“THE ANCIENT CITY OF PING YAO”**  
**© JIONGXIN PENG**  
**2016 S4C International Exhibition of Photography**  
**PID Color Theme (Scapes)**

PID Color Page 286

<http://www.pcms-photo.org/exhibitions>



**“AUTUMN SCENE”  
© SENG HUAT PHUA  
2016 S4C International Exhibition of Photography  
PID Color General  
HM**

PID Color Page 287

<http://www.pcms-photo.org/exhibitions>



**“DEER IN FREE”  
© SENG HUAT PHUA  
2016 S4C International Exhibition of Photography  
PID Color General  
HM**

PID Color Page 288

<http://www.pcms-photo.org/exhibitions>



**“ABENDLICHT”**  
**© MANFRED PILLIK**  
**2016 S4C International Exhibition of Photography**  
**PID Color Theme (Scapes)**

PID Color Page 289

<http://www.pcms-photo.org/exhibitions>





**“AISSTAL”**  
**© MANFRED PILLIK**  
**2016 S4C International Exhibition of Photography**  
**PID Color Theme (Scapes)**

PID Color Page 290

<http://www.pcms-photo.org/exhibitions>



**“GEBALLTE KRAFT”**  
**© MANFRED PILLIK**  
**2016 S4C International Exhibition of Photography**  
**PID Color Theme (Scapes)**

PID Color Page 291

<http://www.pcms-photo.org/exhibitions>



**“GENUSS”**  
**© MANFRED PILLIK**  
**2016 S4C International Exhibition of Photography**  
**PID Color General**

PID Color Page 292

<http://www.pcms-photo.org/exhibitions>





**“KOPFUEBER”**  
**© MANFRED PILLIK**  
**2016 S4C International Exhibition of Photography**  
**PID Color General**

PID Color Page 293

<http://www.pcms-photo.org/exhibitions>





**“VERSCHNEIT”**  
**© MANFRED PILLIK**  
**2016 S4C International Exhibition of Photography**  
**PID Color Theme (Scapes)**

PID Color Page 294

<http://www.pcms-photo.org/exhibitions>



**“BLUE SEAT”**  
**© SANDRA POLLOCK**  
**2016 S4C International Exhibition of Photography**  
**PID Color General**

PID Color Page 295

<http://www.pcms-photo.org/exhibitions>

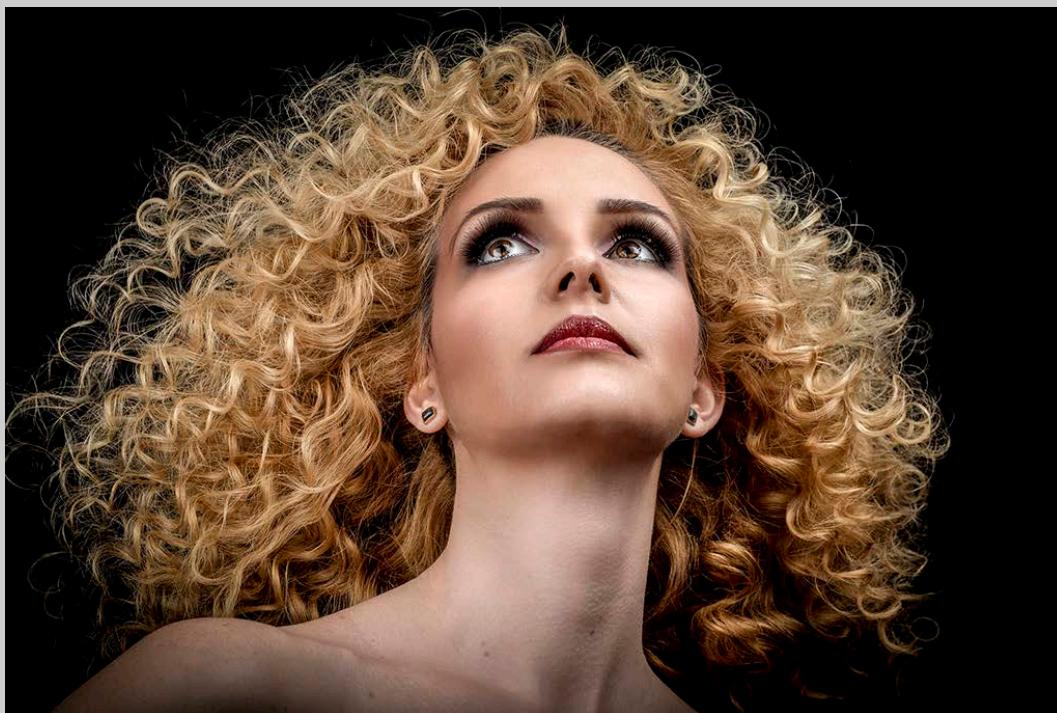




**“LINE”**  
© OVI D POP  
2016 S4C International Exhibition of Photography  
PID Color General

PID Color Page 296

<http://www.pcms-photo.org/exhibitions>



**“MACRI”  
© OVI D POP  
2016 S4C International Exhibition of Photography  
PID Color General  
S4C Bronze**

PID Color Page 297

<http://www.pcms-photo.org/exhibitions>





**“STAIRS ON THE WALL”**  
© OVI D POP  
2016 S4C International Exhibition of Photography  
PID Color Theme (Scapes)

PID Color Page 298

<http://www.pcms-photo.org/exhibitions>



**“THE CHURCH”**  
**© OVI D POP**  
**2016 S4C International Exhibition of Photography**  
**PID Color Theme (Scapes)**  
**HM**

PID Color Page 299

<http://www.pcms-photo.org/exhibitions>



**"UNDER"**  
**© OVI D POP**  
**2016 S4C International Exhibition of Photography**  
**PID Color General**

PID Color Page 300

<http://www.pcms-photo.org/exhibitions>





**“FLOATING LEAF”**  
**© LESTLIE PROKOSCH**  
**2016 S4C International Exhibition of Photography**  
**PID Color General**

PID Color Page 301

<http://www.pcms-photo.org/exhibitions>





**“AUTUMN RIVER”**  
**© BIRGIT PUSTELNIK, PPSA**  
**2016 S4C International Exhibition of Photography**  
**PID Color Theme (Scapes)**

PID Color Page 302

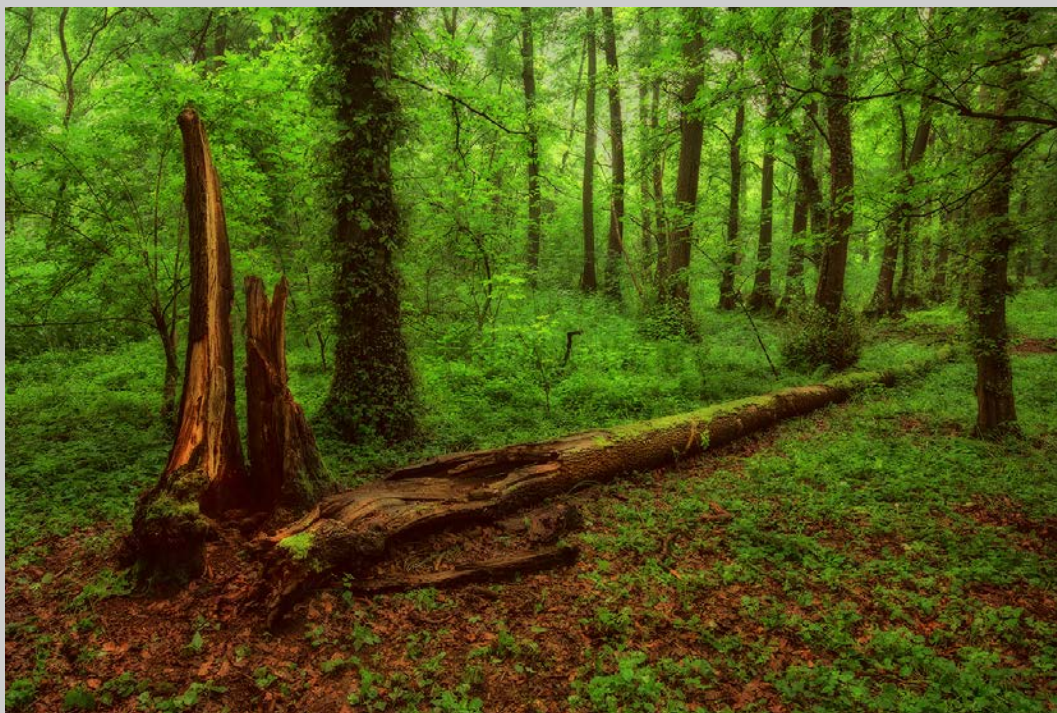
<http://www.pcms-photo.org/exhibitions>



**“BIRCHES AND BARN”**  
**© BIRGIT PUSTELNIK, PPSA**  
**2016 S4C International Exhibition of Photography**  
**PID Color Theme (Scapes)**

PID Color Page 303

<http://www.pcms-photo.org/exhibitions>



**“BROKEN TREE”**  
**© BIRGIT PUSTELNIK, PPSA**  
**2016 S4C International Exhibition of Photography**  
**PID Color Theme (Scapes)**

PID Color Page 304

<http://www.pcms-photo.org/exhibitions>

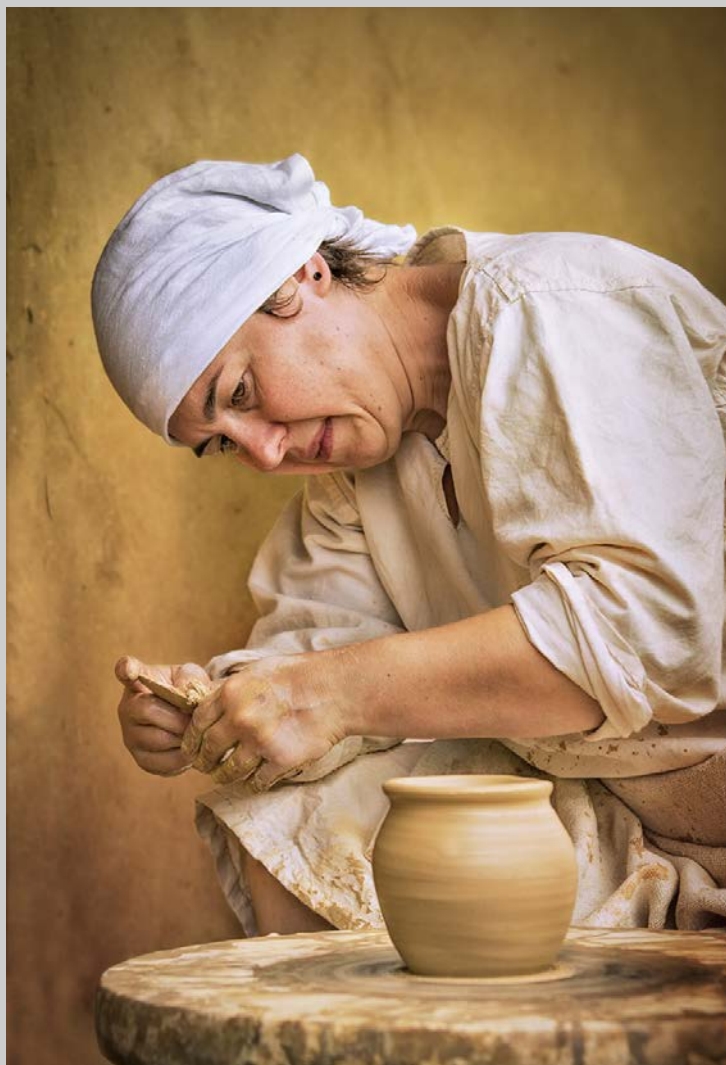


**“FOREST EDGE”**  
**© BIRGIT PUSTELNIK, PPSA**  
**2016 S4C International Exhibition of Photography**  
**PID Color General**

PID Color Page 305

<http://www.pcms-photo.org/exhibitions>





**“POTTER”**  
**© BIRGIT PUSTELNIK, PPSA**  
**2016 S4C International Exhibition of Photography**  
**PID Color General**

PID Color Page 306

<http://www.pcms-photo.org/exhibitions>



**“WINTER STEAM”**  
**© BIRGIT PUSTELNIK, PPSA**  
**2016 S4C International Exhibition of Photography**  
**PID Color General**

PID Color Page 307

<http://www.pcms-photo.org/exhibitions>



**“BEI TAGESANBRUCH”**  
**© HANS-LUDWIG QUANDT**  
**2016 S4C International Exhibition of Photography**  
**PID Color General**

PID Color Page 308

<http://www.pcms-photo.org/exhibitions>



**“SCHWARZ-WEISS-ROT”  
© HELGARD QUANDT  
2016 S4C International Exhibition of Photography  
PID Color General**

PID Color Page 309

<http://www.pcms-photo.org/exhibitions>





**“SEASIDE COMMUNITY”  
© JEANNE QUILLAN  
2016 S4C International Exhibition of Photography  
PID Color General**

PID Color Page 310

<http://www.pcms-photo.org/exhibitions>



**“BABOON LOVE 5”**  
**© LOU ROMAIN, FPSA, EPSA**  
**2016 S4C International Exhibition of Photography**  
**PID Color General**  
**HM**

PID Color Page 311

<http://www.pcms-photo.org/exhibitions>



**“BIG BARITONE BUGLE SPIRAL”**  
**© LOU ROMAIN, FPSA, EPSA**  
**2016 S4C International Exhibition of Photography**  
**PID Color General**

PID Color Page 312

<http://www.pcms-photo.org/exhibitions>



**“ORANGUTAN TV SHOW”**  
**© LOU ROMAIN, FPSA, EPSA**  
**2016 S4C International Exhibition of Photography**  
**PID Color General**

PID Color Page 313

<http://www.pcms-photo.org/exhibitions>





**“CALA LILY AND LACE”  
© TRUDY RUNYAN, EPSA  
2016 S4C International Exhibition of Photography  
PID Color General**

PID Color Page 314

<http://www.pcms-photo.org/exhibitions>



**“HARBOR LIGHT”**  
**© TRUDY RUNYAN, EPSA**  
**2016 S4C International Exhibition of Photography**  
**PID Color Theme (Scapes)**

PID Color Page 315

<http://www.pcms-photo.org/exhibitions>

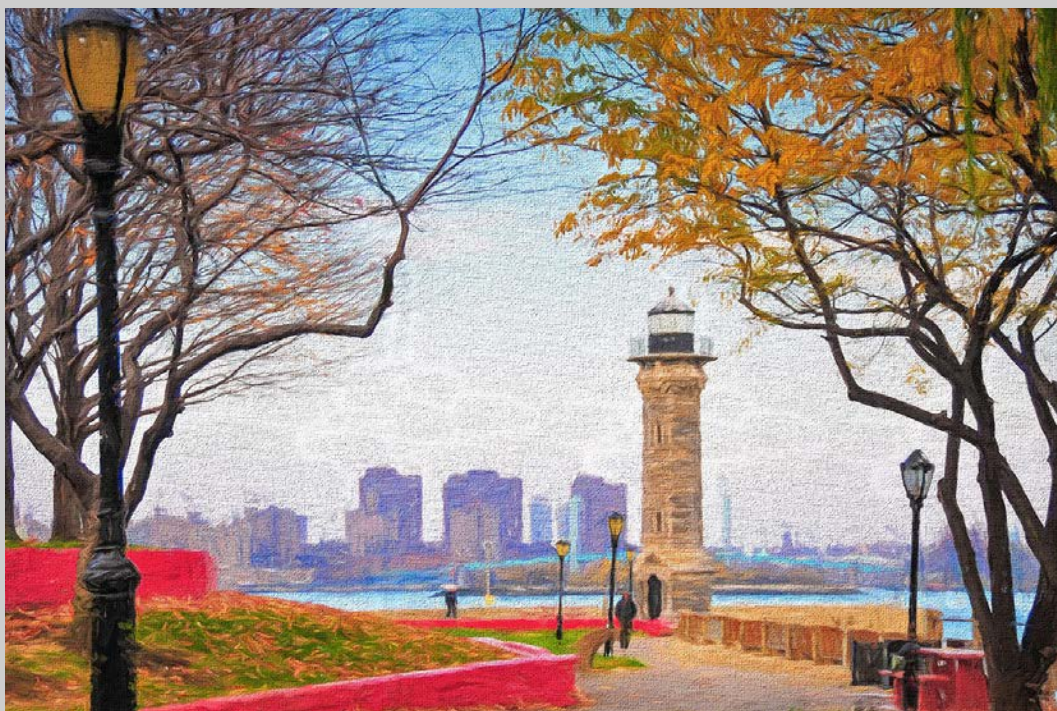


**“STILL LIFE TRIO”**  
**© TRUDY RUNYAN, EPSA**  
**2016 S4C International Exhibition of Photography**  
**PID Color General**

PID Color Page 316

<http://www.pcms-photo.org/exhibitions>





**“LIGHTHOUSE PARK”**  
**© MOHAMMAD ALI SALIM, MPSA**  
**2016 S4C International Exhibition of Photography**  
**PID Color General**

PID Color Page 317

<http://www.pcms-photo.org/exhibitions>





**“YELLOW LINES”**  
**© MOHAMMAD ALI SALIM, MPSA**  
**2016 S4C International Exhibition of Photography**  
**PID Color General**

PID Color Page 318

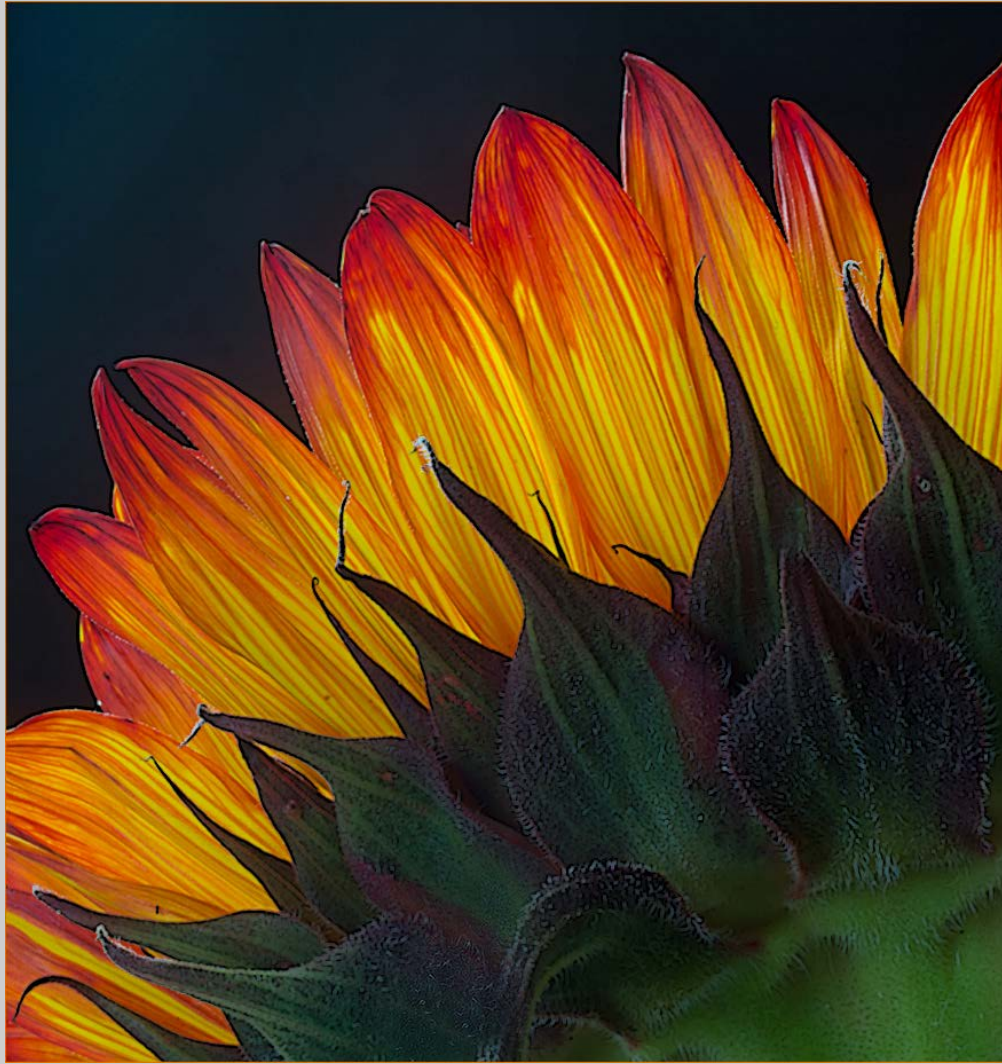
<http://www.pcms-photo.org/exhibitions>



**“MARTINI”**  
**© MARIAN SANDBOTHE**  
**2016 S4C International Exhibition of Photography**  
**PID Color General**

PID Color Page 319

<http://www.pcms-photo.org/exhibitions>



**“SUNFLOWER”**  
**© MARIAN SANDBOTHE**  
**2016 S4C International Exhibition of Photography**  
**PID Color General**

PID Color Page 320

<http://www.pcms-photo.org/exhibitions>



**“WEBSTER”**  
**© MARIAN SANDBOTHE**  
**2016 S4C International Exhibition of Photography**  
**PID Color General**

PID Color Page 321

<http://www.pcms-photo.org/exhibitions>





**“DEAD HORSE POINT”  
© ELLA SCHREIBER  
2016 S4C International Exhibition of Photography  
PID Color Theme (Scapes)**

PID Color Page 322

<http://www.pcms-photo.org/exhibitions>



**“DENALI POND REFLECTIONS”  
© ELLA SCHREIBER  
2016 S4C International Exhibition of Photography  
PID Color Theme (Scapes)**

PID Color Page 323

<http://www.pcms-photo.org/exhibitions>





**“DENALI W SNOW GEESE”  
© ELLA SCHREIBER  
2016 S4C International Exhibition of Photography  
PID Color Theme (Scapes)**

PID Color Page 324

<http://www.pcms-photo.org/exhibitions>



**“SUN RISE AT ARCHES”  
© ELLA SCHREIBER  
2016 S4C International Exhibition of Photography  
PID Color Theme (Scapes)**

PID Color Page 325

<http://www.pcms-photo.org/exhibitions>





**“SPIRALING STAIRCASE”**  
**© MARIE H SCHREIBER**  
**2016 S4C International Exhibition of Photography**  
**PID Color General**

PID Color Page 326

<http://www.pcms-photo.org/exhibitions>



**“EXPRESS YOURSELF NO SIX”  
© WOLFGANG SCHWEDEN, MPSA  
2016 S4C International Exhibition of Photography  
PID Color General**

PID Color Page 327

<http://www.pcms-photo.org/exhibitions>



**“CATHEDRAL PEAK”**  
**© PETER SCIFRES**  
**2016 S4C International Exhibition of Photography**  
**PID Color Theme (Scapes)**  
**HM**

PID Color Page 328

<http://www.pcms-photo.org/exhibitions>





**“EAT”**  
**© PETER SCIFRES**  
**2016 S4C International Exhibition of Photography**  
**PID Color General**

PID Color Page 329

<http://www.pcms-photo.org/exhibitions>





**“GHOSTS”**  
**© PETER SCIFRES**  
**2016 S4C International Exhibition of Photography**  
**PID Color General**

PID Color Page 330

<http://www.pcms-photo.org/exhibitions>



**“TAKE THE STEP”**  
**© PETER SCIFRES**  
**2016 S4C International Exhibition of Photography**  
**PID Color Theme (Scapes)**

PID Color Page 331

<http://www.pcms-photo.org/exhibitions>



**“THE WALK”**  
**© PETER SCIFRES**  
**2016 S4C International Exhibition of Photography**  
**PID Color Theme (Scapes)**

PID Color Page 332

<http://www.pcms-photo.org/exhibitions>



**“APRIL IN PRAGUE”**  
**© SCOTT SHACKELFORD**  
**2016 S4C International Exhibition of Photography**  
**PID Color Theme (Scapes)**

PID Color Page 333

<http://www.pcms-photo.org/exhibitions>





**“JOSHUA TREE SUNSET - PINK”  
© SCOTT SHACKELFORD  
2016 S4C International Exhibition of Photography  
PID Color General**

PID Color Page 334

<http://www.pcms-photo.org/exhibitions>



**“CHASE BANK EAST\_1046”  
© JAMES D. SMITH, PPSA  
2016 S4C International Exhibition of Photography  
PID Color Theme (Scapes)**

PID Color Page 335

<http://www.pcms-photo.org/exhibitions>



**“MARIACHI ALLEGRE\_0057”**  
**© JAMES D. SMITH, PPSA**  
**2016 S4C International Exhibition of Photography**  
**PID Color General**  
**Judge’s Choice**

PID Color Page 336

<http://www.pcms-photo.org/exhibitions>





**“TEMPE CITY SCAPE\_3335”  
© JAMES D. SMITH, PPSA  
2016 S4C International Exhibition of Photography  
PID Color Theme (Scapes)**

PID Color Page 337

<http://www.pcms-photo.org/exhibitions>





**“WALKUP TO THE GATE\_7161”  
© JAMES D. SMITH, PPSA  
2016 S4C International Exhibition of Photography  
PID Color General**

PID Color Page 338

<http://www.pcms-photo.org/exhibitions>



**“A LAKELAND POSTCARD”**  
**© JOHN SPITTLE, PPSA**  
**2016 S4C International Exhibition of Photography**  
**PID Color Theme (Scapes)**

PID Color Page 339

<http://www.pcms-photo.org/exhibitions>



**“EASY AND SLOW”**  
**© JOHN SPITTLE, PPSA**  
**2016 S4C International Exhibition of Photography**  
**PID Color General**

PID Color Page 340

<http://www.pcms-photo.org/exhibitions>



**“JOKULSARLON ICE”**  
**© JOHN SPITTLE, PPSA**  
**2016 S4C International Exhibition of Photography**  
**PID Color Theme (Scapes)**

PID Color Page 341

<http://www.pcms-photo.org/exhibitions>





**“LIVERPOOL RED”**  
**© JOHN SPITTLE, PPSA**  
**2016 S4C International Exhibition of Photography**  
**PID Color General**

PID Color Page 342

<http://www.pcms-photo.org/exhibitions>



**“BONGELINE GOLD SCARF NO3”  
© JAN-THOMAS STAKE, GMPSA  
2016 S4C International Exhibition of Photography  
PID Color General**

PID Color Page 343

<http://www.pcms-photo.org/exhibitions>



**“BONGELINE RED LIPS NO3”  
© JAN-THOMAS STAKE, GMPSA  
2016 S4C International Exhibition of Photography  
PID Color General**

PID Color Page 344

<http://www.pcms-photo.org/exhibitions>



**“MULL OF GALLOWAY LIGHTHOUSE”**  
**© HUGH STANTON**  
**2016 S4C International Exhibition of Photography**  
**PID Color General**

PID Color Page 345

<http://www.pcms-photo.org/exhibitions>





**“SOLWAY SERENITY”  
© HUGH STANTON  
2016 S4C International Exhibition of Photography  
PID Color General**

PID Color Page 346

<http://www.pcms-photo.org/exhibitions>



**"THE CROOKED PASSAGEWAY"**  
**© HUGH STANTON**  
**2016 S4C International Exhibition of Photography**  
**PID Color General**

PID Color Page 347

<http://www.pcms-photo.org/exhibitions>



**“CLOUDY QUAYS”  
© WILL STEAD  
2016 S4C International Exhibition of Photography  
PID Color Theme (Scapes)**

PID Color Page 348

<http://www.pcms-photo.org/exhibitions>



**“GLEN COE WATERFALLS”  
© WILL STEAD  
2016 S4C International Exhibition of Photography  
PID Color Theme (Scapes)**

PID Color Page 349

<http://www.pcms-photo.org/exhibitions>





**“HEALEY DELL”  
© WILL STEAD  
2016 S4C International Exhibition of Photography  
PID Color Theme (Scapes)**

PID Color Page 350

<http://www.pcms-photo.org/exhibitions>



**“FESTICOLOR”**  
**© JOAO TABORDA, PPSA**  
**2016 S4C International Exhibition of Photography**  
**PID Color General**

PID Color Page 351

<http://www.pcms-photo.org/exhibitions>



**“FRIENDS WILL BE FRIENDS”  
© JOAO TABORDA, PPSA  
2016 S4C International Exhibition of Photography  
PID Color General**

PID Color Page 352

<http://www.pcms-photo.org/exhibitions>





**"I M HERE"**  
**© JOAO TABORDA, PPSA**  
**2016 S4C International Exhibition of Photography**  
**PID Color General**

PID Color Page 353

<http://www.pcms-photo.org/exhibitions>





**“BATTLING THE WAVE”**  
**© KAM CHIU TAM**  
**2016 S4C International Exhibition of Photography**  
**PID Color General**  
**HM**

PID Color Page 354

<http://www.pcms-photo.org/exhibitions>



**“BRONTE LIGHT TOWER”  
© KAM CHIU TAM  
2016 S4C International Exhibition of Photography  
PID Color Theme (Scapes)**

PID Color Page 355

<http://www.pcms-photo.org/exhibitions>



**“CHASING BEHIND”  
© KAM CHIU TAM  
2016 S4C International Exhibition of Photography  
PID Color General**

PID Color Page 356

<http://www.pcms-photo.org/exhibitions>



**“FALLING HEADLONG”**  
**© KAM CHIU TAM**  
**2016 S4C International Exhibition of Photography**  
**PID Color General**  
**HM**

PID Color Page 357

<http://www.pcms-photo.org/exhibitions>





**“THE EXHAUSTED DOGS”**  
**© KAM CHIU TAM**  
**2016 S4C International Exhibition of Photography**  
**PID Color General**

PID Color Page 358

<http://www.pcms-photo.org/exhibitions>



**“BARREN”**  
**© DAVID POEY-CHER TAY, EPSA**  
**2016 S4C International Exhibition of Photography**  
**PID Color Theme (Scapes)**

PID Color Page 359

<http://www.pcms-photo.org/exhibitions>



**“CAT LOVER”**  
**© DAVID POEY-CHER TAY, EPSA**  
**2016 S4C International Exhibition of Photography**  
**PID Color General**

PID Color Page 360

<http://www.pcms-photo.org/exhibitions>



**“DUBAI BUSTLE”**  
**© DAVID POEY-CHER TAY, EPSA**  
**2016 S4C International Exhibition of Photography**  
**PID Color Theme (Scapes)**

PID Color Page 361

<http://www.pcms-photo.org/exhibitions>





**“HARMONY IN WHITE”**  
**© DAVID POEY-CHER TAY, EPSA**  
**2016 S4C International Exhibition of Photography**  
**PID Color General**

PID Color Page 362

<http://www.pcms-photo.org/exhibitions>



**“HAPPY MEAL 132”  
© TOMMY TEH, PPSA  
2016 S4C International Exhibition of Photography  
PID Color General**

PID Color Page 363

<http://www.pcms-photo.org/exhibitions>



**“OVER RIDE 2”  
© TOMMY TEH, PPSA  
2016 S4C International Exhibition of Photography  
PID Color General  
HM**

PID Color Page 364

<http://www.pcms-photo.org/exhibitions>



**“HUMMINGBIRD 5A10”  
© TUAN TRAN  
2016 S4C International Exhibition of Photography  
PID Color General**

PID Color Page 365

<http://www.pcms-photo.org/exhibitions>





**“ST AUGUSTINE BEACH PIER 1A1”  
© TUAN TRAN  
2016 S4C International Exhibition of Photography  
PID Color Theme (Scapes)**

PID Color Page 366

<http://www.pcms-photo.org/exhibitions>



**“TABLE LAND”**  
**© WAI MAN TSIM, MPSA**  
**2016 S4C International Exhibition of Photography**  
**PID Color Theme (Scapes)**

PID Color Page 367

<http://www.pcms-photo.org/exhibitions>



**“GREAT GREY OWL IN FLIGHT”**  
**© JUANITA URIBE**  
**2016 S4C International Exhibition of Photography**  
**PID Color General**

PID Color Page 368

<http://www.pcms-photo.org/exhibitions>



**“GREAT HORNED OWL 5”  
© JUANITA URIBE  
2016 S4C International Exhibition of Photography  
PID Color General**

PID Color Page 369

<http://www.pcms-photo.org/exhibitions>





**“WAITING FOR MOM”  
© JUANITA URIBE  
2016 S4C International Exhibition of Photography  
PID Color General**

PID Color Page 370

<http://www.pcms-photo.org/exhibitions>



**“AZENHAS DO MAR”**  
**© INGE VAUTRIN**  
**2016 S4C International Exhibition of Photography**  
**PID Color General**

PID Color Page 371

<http://www.pcms-photo.org/exhibitions>



**“GARLIC”**  
**© ALAN WADE**  
**2016 S4C International Exhibition of Photography**  
**PID Color General**

PID Color Page 372

<http://www.pcms-photo.org/exhibitions>



**“BACK HOME AT DUSK”  
© ROSALIE WANG  
2016 S4C International Exhibition of Photography  
PID Color General**

PID Color Page 373

<http://www.pcms-photo.org/exhibitions>





**“ON THE INLE LAKE”  
© ROSALIE WANG  
2016 S4C International Exhibition of Photography  
PID Color General  
HM**

PID Color Page 374

<http://www.pcms-photo.org/exhibitions>



**“SAND DUNE 40”  
© ROSALIE WANG  
2016 S4C International Exhibition of Photography  
PID Color Theme (Scapes)  
S4C Bronze**

PID Color Page 375

<http://www.pcms-photo.org/exhibitions>



**“STAR PATH”**  
**© ROSALIE WANG**  
**2016 S4C International Exhibition of Photography**  
**PID Color Theme (Scapes)**  
**HM**

PID Color Page 376

<http://www.pcms-photo.org/exhibitions>



**“TREES AT SAND DUNE 40”  
© ROSALIE WANG  
2016 S4C International Exhibition of Photography  
PID Color General**

PID Color Page 377

<http://www.pcms-photo.org/exhibitions>





**“HOWTH, IRELAND LIGHTHOUSE”  
© NORMA WARDEN  
2016 S4C International Exhibition of Photography  
PID Color Theme (Scapes)**

PID Color Page 378

<http://www.pcms-photo.org/exhibitions>



**“IRISH FISHING BOATS”**  
**© NORMA WARDEN**  
**2016 S4C International Exhibition of Photography**  
**PID Color Theme (Scapes)**

PID Color Page 379

<http://www.pcms-photo.org/exhibitions>

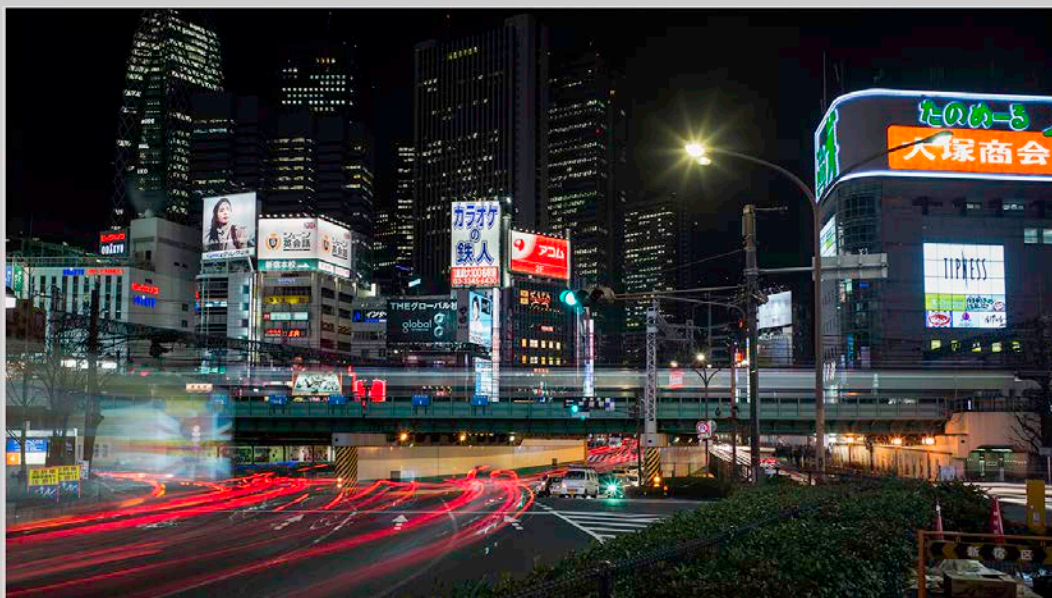


**“NATIVE AMERICAN CHIEF”  
© NORMA WARDEN  
2016 S4C International Exhibition of Photography  
PID Color General**

PID Color Page 380

<http://www.pcms-photo.org/exhibitions>



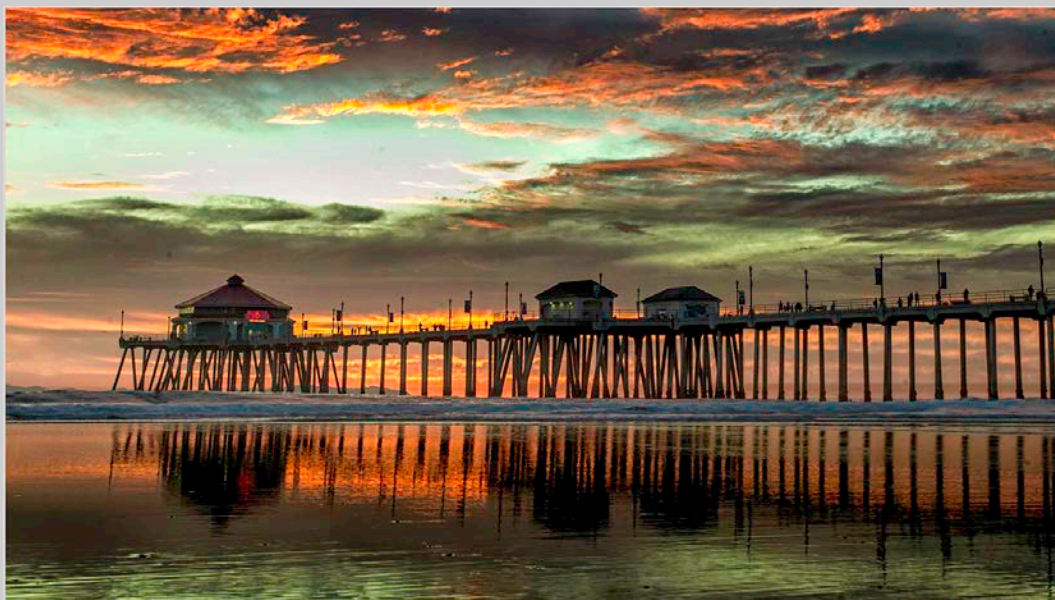


**“HEART OF TOKYO TRANSIT - SHINJUKU”**  
**© JAMES WAT**  
**2016 S4C International Exhibition of Photography**  
**PID Color Theme (Scapes)**

PID Color Page 381

<http://www.pcms-photo.org/exhibitions>





**“RARE GREENISH BURNING HUNGTINGTON”  
© JAMES WAT  
2016 S4C International Exhibition of Photography  
PID Color Theme (Scapes)**

PID Color Page 382

<http://www.pcms-photo.org/exhibitions>



**“THE PEARL OF THE ORIENT - HONGKONG”  
© JAMES WAT  
2016 S4C International Exhibition of Photography  
PID Color Theme (Scapes)**

PID Color Page 383

<http://www.pcms-photo.org/exhibitions>



**“WATERFRONT OF DUBAI - UAE”  
© JAMES WAT  
2016 S4C International Exhibition of Photography  
PID Color Theme (Scapes)**

PID Color Page 384

<http://www.pcms-photo.org/exhibitions>



**“BOEING E75 TAIL N4767V”  
© ALICE MARIE WAY  
2016 S4C International Exhibition of Photography  
PID Color General**

PID Color Page 385

<http://www.pcms-photo.org/exhibitions>





**"CAST A NET"**  
**© FANGRU WEI**  
**2016 S4C International Exhibition of Photography**  
**PID Color General**

PID Color Page 386

<http://www.pcms-photo.org/exhibitions>



**“MOUNTAIN SOUL”**  
**© FANGRU WEI**  
**2016 S4C International Exhibition of Photography**  
**PID Color Theme (Scapes)**

PID Color Page 387

<http://www.pcms-photo.org/exhibitions>



**“DAWN DORY LAUNCH”  
© JOHN WHITE  
2016 S4C International Exhibition of Photography  
PID Color Theme (Scapes)**

PID Color Page 388

<http://www.pcms-photo.org/exhibitions>



**“HIBISCUS ON BLACK”  
© JOHN WHITE  
2016 S4C International Exhibition of Photography  
PID Color General**

PID Color Page 389

<http://www.pcms-photo.org/exhibitions>





**“MANZANITA BEACH OREGON”  
© JOHN WHITE  
2016 S4C International Exhibition of Photography  
PID Color Theme (Scapes)**

PID Color Page 390

<http://www.pcms-photo.org/exhibitions>



**“NUBBLE LIGHTHOUSE 3535”  
© LARRY WHITE  
2016 S4C International Exhibition of Photography  
PID Color Theme (Scapes)**

PID Color Page 391

<http://www.pcms-photo.org/exhibitions>



**“PALOUSE HILLS 3339”**  
**© LARRY WHITE**  
**2016 S4C International Exhibition of Photography**  
**PID Color Theme (Scapes)**

PID Color Page 392

<http://www.pcms-photo.org/exhibitions>





**“PORTLAND HEAD LIGHTHOUSE 3626”**  
**© LARRY WHITE**  
**2016 S4C International Exhibition of Photography**  
**PID Color Theme (Scapes)**

PID Color Page 393

<http://www.pcms-photo.org/exhibitions>





**“CLOSEUP OF LAURA”  
© DAVE WHITSON, APSA, PPSA  
2016 S4C International Exhibition of Photography  
PID Color General**

PID Color Page 394

<http://www.pcms-photo.org/exhibitions>



**“EMILY IN THOUGHT”**  
**© DAVE WHITSON, APSA, PPSA**  
**2016 S4C International Exhibition of Photography**  
**PID Color General**

PID Color Page 395

<http://www.pcms-photo.org/exhibitions>



**“CLEARING AT VALLEY VIEW”  
© CHRISTINE WILKINS  
2016 S4C International Exhibition of Photography  
PID Color Theme (Scapes)**

PID Color Page 396

<http://www.pcms-photo.org/exhibitions>

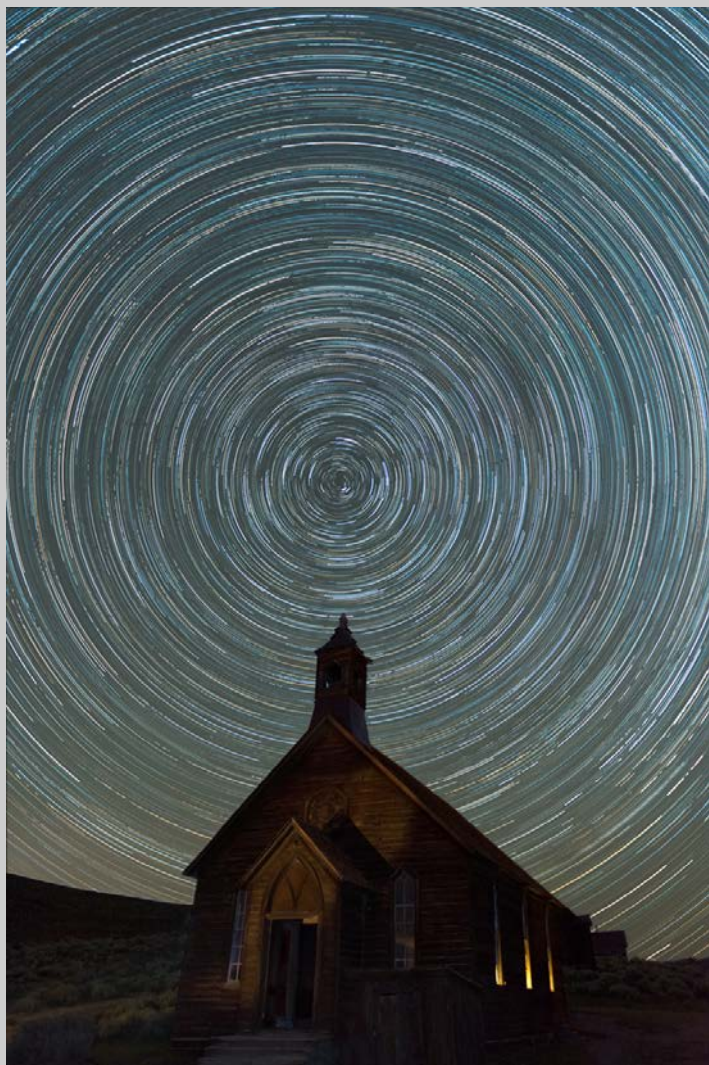


**“MILKY WAY OVER MONO LAKE”  
© CHRISTINE WILKINS  
2016 S4C International Exhibition of Photography  
PID Color Theme (Scapes)**

PID Color Page 397

<http://www.pcms-photo.org/exhibitions>





**“BODIE CHURCH AT NIGHT”**  
**© DAVID WILKINS**  
**2016 S4C International Exhibition of Photography**  
**PID Color General**

PID Color Page 398

<http://www.pcms-photo.org/exhibitions>



**“BURROWING OWL AND MOTH”**  
**© DAVID WILKINS**  
**2016 S4C International Exhibition of Photography**  
**PID Color General**

PID Color Page 399

<http://www.pcms-photo.org/exhibitions>



**“SEATTLE SKYLINE AT SUNSET”  
© DAVID WILKINS  
2016 S4C International Exhibition of Photography  
PID Color Theme (Scapes)**

PID Color Page 400

<http://www.pcms-photo.org/exhibitions>



**“AUTUMN MORNING”  
© RON WILLEMS  
2016 S4C International Exhibition of Photography  
PID Color General**

PID Color Page 401

<http://www.pcms-photo.org/exhibitions>





**"PORT CHALMERS MORNING"**  
**© RON WILLEMS**  
**2016 S4C International Exhibition of Photography**  
**PID Color General**

PID Color Page 402

<http://www.pcms-photo.org/exhibitions>



**“ICEBERGS GOLD HARBOUR”  
© JOHN WILLIAMS, MPSA  
2016 S4C International Exhibition of Photography  
PID Color Theme (Scapes)**

PID Color Page 403

<http://www.pcms-photo.org/exhibitions>



**“PEDRO”**  
**© TERRY WILLIAMS**  
**2016 S4C International Exhibition of Photography**  
**PID Color General**

PID Color Page 404

<http://www.pcms-photo.org/exhibitions>

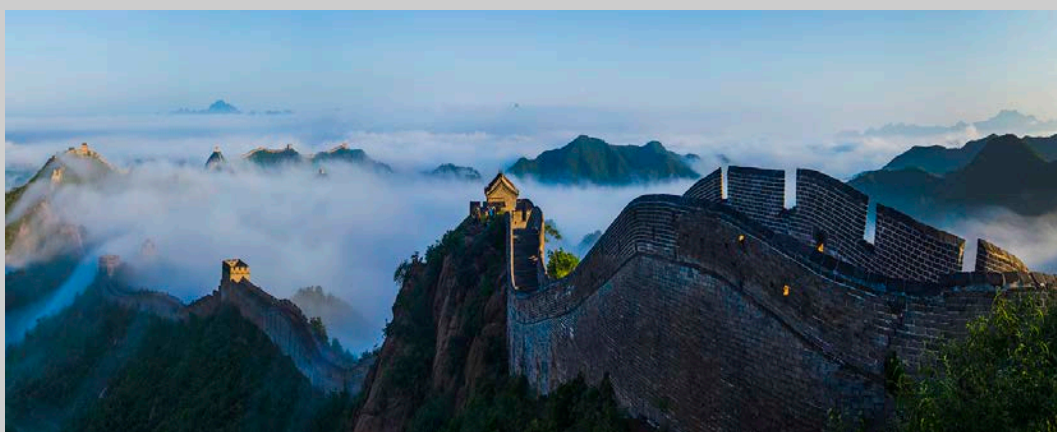


**“SNOW MOUNTAIN PANORAMA”**  
**© XIAOMEI XU**  
**2016 S4C International Exhibition of Photography**  
**PID Color Theme (Scapes)**

PID Color Page 405

<http://www.pcms-photo.org/exhibitions>





**“ORIENTAL DRAGON”  
© DONG YANG  
2016 S4C International Exhibition of Photography  
PID Color Theme (Scapes)**

PID Color Page 406

<http://www.pcms-photo.org/exhibitions>



**“THE GREAT WALL MORNING RHYME”  
© DONG YANG  
2016 S4C International Exhibition of Photography  
PID Color Theme (Scapes)**

PID Color Page 407

<http://www.pcms-photo.org/exhibitions>



**“LISHUI BRIDGE ON FOGGY LAKE”  
© PUI-CHUNG YEE  
2016 S4C International Exhibition of Photography  
PID Color General**

PID Color Page 408

<http://www.pcms-photo.org/exhibitions>



**“LISHUI LAKE BOATS”**  
**© PUI-CHUNG YEE**  
**2016 S4C International Exhibition of Photography**  
**PID Color General**

PID Color Page 409

<http://www.pcms-photo.org/exhibitions>





**“LOOKING DOWN”**  
**© FENDY P.C. YEOH, PPSA**  
**2016 S4C International Exhibition of Photography**  
**PID Color General**

PID Color Page 410

<http://www.pcms-photo.org/exhibitions>



**“PRAYING TO THE LORD”  
© FENDY P.C. YEOH, PPSA  
2016 S4C International Exhibition of Photography  
PID Color General**

PID Color Page 411

<http://www.pcms-photo.org/exhibitions>



**“TAKING A PEEP”**  
**© FENDY P.C. YEOH, PPSA**  
**2016 S4C International Exhibition of Photography**  
**PID Color General**

PID Color Page 412

<http://www.pcms-photo.org/exhibitions>



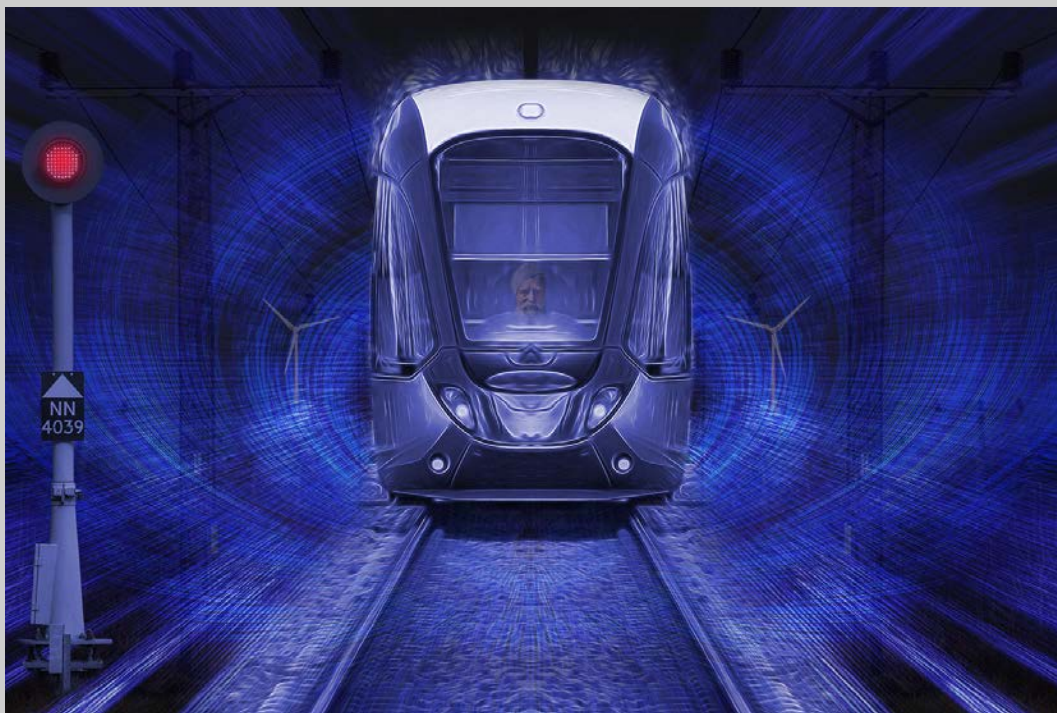


**“FINAL TOUCHES (2)”**  
**© ALAN YOUNG**  
**2016 S4C International Exhibition of Photography**  
**PID Color General**

PID Color Page 413

<http://www.pcms-photo.org/exhibitions>





**“FUTURE ELECTRIC (3)”**  
**© ALAN YOUNG**  
**2016 S4C International Exhibition of Photography**  
**PID Color General**

PID Color Page 414

<http://www.pcms-photo.org/exhibitions>



**“RELUCTANT”**  
**© ALAN YOUNG**  
**2016 S4C International Exhibition of Photography**  
**PID Color General**

PID Color Page 415

<http://www.pcms-photo.org/exhibitions>



**“TIME LORDS (2)”**  
**© ALAN YOUNG**  
**2016 S4C International Exhibition of Photography**  
**PID Color General**

PID Color Page 416

<http://www.pcms-photo.org/exhibitions>





**“COUNTRY LIFE 2”  
© HUNG KAM YUEN  
2016 S4C International Exhibition of Photography  
PID Color General  
HM**

PID Color Page 417

<http://www.pcms-photo.org/exhibitions>





**“FISHERMEN”**  
**© HUNG KAM YUEN**  
**2016 S4C International Exhibition of Photography**  
**PID Color General**

PID Color Page 418

<http://www.pcms-photo.org/exhibitions>



**“RODEO THRILLING”**  
**© HUNG KAM YUEN**  
**2016 S4C International Exhibition of Photography**  
**PID Color General**

PID Color Page 419

<http://www.pcms-photo.org/exhibitions>



**“A CURTAIN OF MEDITATION”  
© HANJU ZHU  
2016 S4C International Exhibition of Photography  
PID Color General**

PID Color Page 420

<http://www.pcms-photo.org/exhibitions>



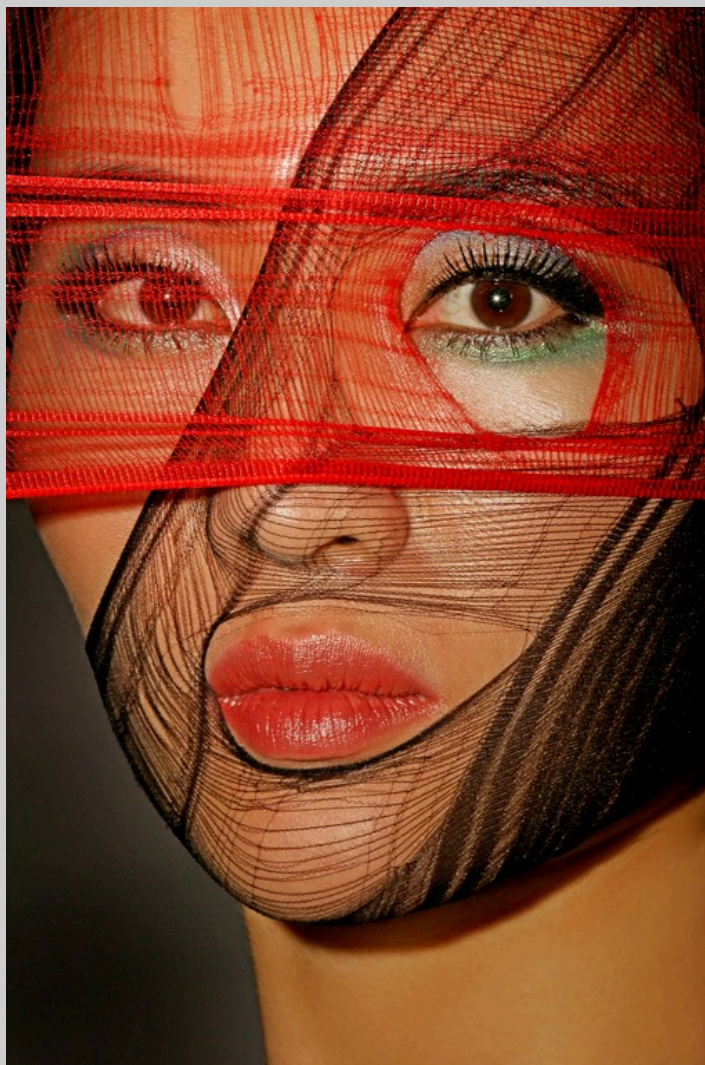


**“MIND CHARMED”  
© HANJU ZHU  
2016 S4C International Exhibition of Photography  
PID Color General**

PID Color Page 421

<http://www.pcms-photo.org/exhibitions>





**“VIVID”**  
**© HANJU ZHU**  
**2016 S4C International Exhibition of Photography**  
**PID Color General**

PID Color Page 422

<http://www.pcms-photo.org/exhibitions>



**“PROMENADE DES ANGLAIS NICE”**  
**© HANS ZIMA**  
**2016 S4C International Exhibition of Photography**  
**PID Color Theme (Scapes)**

PID Color Page 423

<http://www.pcms-photo.org/exhibitions>