



# 2018 S4C INTERNATIONAL EXHIBITION OF PHOTOGRAPHY

## CATALOG PID COLOR DIVISION

<https://www.s4c-ex.org/>

Sponsored by the Southern California Council of Camera Clubs  
Recognized by the Photographic Society of America  
Licensed by the Global Photographic Union

### INSTRUCTIONS:

Download catalog to a convenient place on your computer (e.g., your desktop)

Best opened with Adobe Acrobat or Adobe Acrobat Pro.

For navigational ease, make sure that Acrobat tools are visible. Depending on the version, this can normally be achieved with View>Tools.

The catalog opens in Adobe with thumbnails of the pages to the left. You may have to reveal the thumbnails with other PDF viewers.

There is an index at the front with page numbers for each of the image titles. Slide through the thumbnails to find a particular page. Or use the Acrobat Go To Page tool at the top (if visible). You can scroll through the images using the up/down arrows on your keyboard.

All copyrights in all posted images accessible through this catalog remain vested with the original makers (authors) of the images. All use, copying, or republishing without permission of the maker is prohibited, except for downloading the images directly from this document or website for viewing purposes.



## 2018 S4C INTERNATIONAL EXHIBITION OF PHOTOGRAPHY

General Chair: Stuart Lynn, APSA, HonS4C, DFS4C

Vice Chair: Diane Racey, FPSA, GMPSA, HonS4C, DFS4C

*Recognized by the  
Photographic Society of America*

*Licensed by the  
Global Photographic Union*

**T**he sponsors of this International Exhibition of Photography have been awarded Recognition by PSA, the world's largest patron of international photographic exhibitions. PSA, although it has provided Recognition, is neither a sponsor nor directly involved in the operation of this exhibition.



Valid acceptances received by PSA Members in recognized sections of this exhibition are eligible for PSA Star Ratings, listing in the world-wide PSA Who's Who of Photography and credited towards the PSA Distinctions of PPSA, EPSA, MPSA, GMPSA, GMPSA/b, GMPSA/s, GMPSA/g, and GMPSA/p.

PSA is a non-profit organization promoting the advancement of photography in all its forms to novice, amateur and professional photographers world wide.

For information on membership and the many services and activities of PSA contact:

**psa**

PHOTOGRAPHIC SOCIETY OF AMERICA  
8341 S. Walker Avenue, Suite 104  
Oklahoma City, OK 73139-9401, U.S.A.  
E-mail: [hq@psa-photo.org](mailto:hq@psa-photo.org)  
Web Site: <http://www.psa-photo.org>



GLOBAL PHOTOGRAPHIC UNION - GPU (former UPI)

is a worldwide interactive organization for anyone interested in photography, be they casual, serious amateurs or professional photographers.

Founded in Goirle, The Netherlands, September 2007, GPU brings together professional and amateur enthusiasts of all ages and levels of achievement. As a nonprofit organization, its mission is to promote and enhance the art and science of photography in all its phases.

Individual members are offered a wide variety of activities: photo and digital competitions, photo exhibitions in different countries, study groups via mail, web site access, photo books, magazines, Photo festivals, distinctions, titles, and a raft of other activities.

Have look on the site: [www.gpuphoto.com](http://www.gpuphoto.com)

**2018 S4C INTERNATIONAL EXHIBITION OF PHOTOGRAPHY  
PID COLOR DIVISION**

Exhibition Chair: Stuart Lynn, APSA, HonS4C, DFS4C

Division Chair: *Diane Racey, FPSA, GMPA, HonS4C, DFS4C*



**Judges**

Elena McTighe, FPSA, MPAA

Paul Speaker, PPSA, M. Photog CR, CPP, F-PPC, S-PPC, FS4C

David Poey Cher Tay, MFIAP, FRPS, MPAA

**AWARDS**



**SECTION PID COLOR GENERAL**

Page

**PSA BEST OF SHOW GOLD**

SHARON PRISLIPSKY (USA): 'EVENING AT PICTURED ROCKS' 245

**S4C GOLD**

PETER CLARK, APSA, MPAA (UNITED KINGDOM): 'EILEAN DONAN CASTLE SCOTLAND' 69

**S4C SILVER**

JAN-THOMAS STAKE, GMPA (SWEDEN): 'BONGELINE 7109' 286

JAN-THOMAS STAKE, GMPA (SWEDEN): 'KAJSA BROWN NECKLACE' 288

**S4C BRONZE**

HSIULING CHIU (TAIWAN): 'GLOW DANCE' 58

KEN LEE (USA): 'MARIA' 177

SAU FONG NEO (MALAYSIA): 'CLASSIC BALLERINA' 218

**JUDGE'S CHOICE**

TERRY DICKERSON, QPSA (USA): 'COTTAGE IN THE SKY' 85

DAVID M MASLIN, EPSA (UNITED KINGDOM): 'VICTORIAH 145' 199

ALAIN MORATA, GPUCR2 (FRANCE): 'DEB 2 HUILES' 212

**CHAIR'S AWARD - GPU**

TINA WAYCIE (USA): 'CANYONLANDS, UTAH' 337

**SECTION PID COLOR THEME - FLOWER(S)**

Page

**PSA BEST OF SHOW GOLD**

JENNI HORSNELL, GMPA (AUSTRALIA): 'SOFT ROSES 2' 137

**S4C GOLD**

JENNI HORSNELL, GMPA (AUSTRALIA): 'WHITE LILIES' 140

**S4C SILVER**

SHARON PRISLIPSKY (USA): 'STAR OF BETHLEHEM' 246

JIJUN SUN (CHINA): 'COMPANY' 295

**S4C BRONZE**

DENISE SALDANA (USA): 'HALF OPEN SUNFLOWERS' 259

ROY SMITH (SCOTLAND): 'PULSATILLA' 284

LYNN THOMPSON, FPSA, MPAA (USA): 'LUPINS IN BLOOM, ICELAND' 305

**JUDGE'S CHOICE**

BOB BENSON, APSA, PPSA (USA): 'REFLECTED COLUMBINE #2' 25

JENNI HORSNELL, GMPA (AUSTRALIA): 'SOFT IRISES' 136

DEE MCMILLAN (USA): 'COOL ICELAND POPPY' 204



# 2018 S4C International Exhibition of Photography

## PID COLOR DIVISION ACCEPTANCES INDEX



PCG=PID Color General ; PCT=PID Color Theme

|   | Page |  | Page |
|---|------|--|------|
| <b>AIROV-BIELING, SHIRL, QPSA (USA)</b>               |      | PCT LIPSTICK PINK                                | 42   |
| PCT ARTICHOKE FLOWER                                  | 10   | PCT THE CALLA LILIES ARE IN BLOOM                | 43   |
| PCG LADY IN A MASK                                    | 11   | <b>CARDER, NAN, APSA, MPSA (USA)</b>             |      |
| PCT MAGENTA ROSE                                      | 12   | PCT LOTUS 4039                                   | 44   |
| PCG THREE FLAMINGOS                                   | 13   | PCG PEACOCK 9892 (HM)                            | 45   |
| <b>ALBRECHT, URS, MPSA (SWITZERLAND)</b>              |      | <b>CHE, ARNALDO PAULO (HONG KONG)</b>            |      |
| PCT WICKE1  | 14   | PCG ALL FOR YOU                                  | 46   |
| <b>ANDERSON, DIANE (USA)</b>                          |      | PCG ALONG THE COASTLINE 1                        | 47   |
| PCG SWEET ELIZABETH ANNE                              | 15   | PCG DIVE FOR THE WIN 2                           | 48   |
| <b>AUSTIN, JOAN, QPSA (ENGLAND)</b>                   |      | <b>CHEANG, SHERMAN (MACAU)</b>                   |      |
| PCT BORAGE  | 16   | PCT BEAUTIFUL PINK LOTUS                         | 49   |
| PCG GOING HOME  | 17   | PCT BEAUTIFUL WHITE LOTUS                        | 50   |
| PCT IN THE PINK                                       | 18   | PCG CLEANING FISHING NET                         | 51   |
| PCG LONG ABANDONED                                    | 19   | PCT PINK LOTUS HEART                             | 52   |
| PCG OTTER PUPS  | 20   | PCT SLIPPER ORCHID                               | 53   |
| <b>BALLARD, JANET, PPSA (USA)</b>                     |      | <b>CHEUNG, KOON NAM, MPSA (HONG KONG)</b>        |      |
| PCT LILY AND BEE                                      | 21   | PCG GOLDEN EAGLE 12                              | 54   |
| <b>BEISHKE, JOHN (USA)</b>                            |      | PCG HAWK OWL A16                                 | 55   |
| PCG CONVICT LAKE 40                                   | 22   | PCG HAWK OWL A22                                 | 56   |
| PCG GREEN AND WHITE ORNAMENTAL CABBAGE                | 23   | PCG SNOWY OWL A01                                | 57   |
| <b>BENSON, BOB, APSA, PPSA (USA)</b>                  |      | <b>CHIU, HSIULING (TAIWAN)</b>                   |      |
| PCG RED SHOULDERED HAWK                               | 24   | PCG GLOW DANCE (S4C BRONZE)                      | 58   |
| PCT REFLECTED COLUMBINE #2 (JUDGE'S CHOICE)           | 25   | PCG UNDERWATER DANCE                             | 59   |
| PCG TETON BARN  | 26   | <b>CHIU, YUCHIEH (TAIWAN)</b>                    |      |
| PCG THE LOUVRE COLOR                                  | 27   | PCG AUTUMN                                       | 60   |
| PCT UNOPENED COLUMBINE                                | 28   | PCG JUMPING SAND                                 | 61   |
| <b>BENSON, PEGGY (USA)</b>                            |      | PCG RURAL LIFE                                   | 62   |
| PCT MAGENTA WATER LILY                                | 29   | PCG SHADOW PLAY (HM)                             | 63   |
| PCG REFLECTION AT KINDERDIJK                          | 30   | <b>CHRISTMAN, ROBERT (USA)</b>                   |      |
| PCT YELLOW HIBISCUS                                   | 31   | PCT CANNA REVIVAL                                | 64   |
| <b>BERNKOPF DR, ALOIS, EFIAP/S, GPU CR4 (AUSTRIA)</b> |      | PCT LAVENDER TWINS                               | 65   |
| PCG ILULLISAT_1                                       | 32   | PCT ORCHIDS CIRCLING                             | 66   |
| <b>BROWN, DONALD, APSA, PPSA (USA)</b>                |      | PCG TRUCKERS RAINY DAY                           | 67   |
| PCG SANDSTONE AT SUNSET 9421                          | 33   | PCT TULIPS IN YELLOW                             | 68   |
| <b>BUGLI, PIETRO (ITALY)</b>                          |      | <b>CLARK, PETER, APSA, MPSA (UNITED KINGDOM)</b> |      |
| PCG COLORS OF COUNTRYSIDE 10                          | 34   | PCG EILEAN DONAN CASTLE SCOTLAND (S4C GOLD)      | 69   |
| PCT PASSION FLOWERS 7                                 | 35   | PCG HVERIR GEOTHERMAL SUNRISE                    | 70   |
| PCG TUSCAN COUNTRYSIDE 9                              | 36   | <b>CLORAN, RICHARD, HONPSA, MPSA (USA)</b>       |      |
| <b>BURKE, BARBARA (USA)</b>                           |      | PCG NATIONAL CATHEDRAL CORRIDOR                  | 71   |
| PCG GETTING THE NECTAR                                | 37   | PCG SCHWABACHER BEAVER POND                      | 72   |
| PCT PINK N YELLOW BEAUTY                              | 38   | <b>CLOUSER, HOLLY KIRKLAND (USA)</b>             |      |
| PCT PRETTY AS A PEACH                                 | 39   | PCT FALLEN BLOSSOM                               | 73   |
| <b>BUTLER, GARY (USA)</b>                             |      | <b>COLLIER, JAMES (USA)</b>                      |      |
| PCG SUNRISE IN KENTUCKY                               | 40   | PCT MOSTLY YELLOW ROSES                          | 74   |
| <b>CAMERON, KIM (USA)</b>                             |      | PCT STUDY IN BLUE                                | 75   |
| PCT INDIGO IRIS                                       | 41   | PCG TEAM WORK                                    | 76   |



## 2018 S4C International Exhibition of Photography

### PID COLOR DIVISION ACCEPTANCES INDEX



PCG=PID Color General ; PCT=PID Color Theme

|   | Page |   | Page |
|---|------|---|------|
| <b>CUPPENS, JOS, EPSA (BELGIUM)</b>     |      | PCT WHITE ROSE (HM)                       | 107  |
| PCG ROOSJE                              | 77   | <b>GRAY, LEAH (CANADA)</b>                |      |
| <b>DAVIS, BRIAN (UNITED KINGDOM)</b>    |      | PCG BACK OFF                              | 108  |
| PCG HONFLEUR                            | 78   | PCG HORSE LATITUDE                        | 109  |
| <b>DAVIS, SHIRLEY (UNITED KINGDOM)</b>  |      | PCG SUN RUN                               | 110  |
| PCG CYCLIST IN THE WATER                | 79   | <b>GRIMES-SACKETT, TANYA (USA)</b>        |      |
| <b>DEDONATO, DONALD (USA)</b>           |      | PCT PITCHER AND PALM                      | 111  |
| PCT DAHLIA & RAINDROPS                  | 80   | PCG REFLECTED RAINBOW                     | 112  |
| PCG DOUBLE TROUBLE                      | 81   | <b>GURNETT, CRAIG (AUSTRALIA)</b>         |      |
| PCG LION PORTRAIT                       | 82   | PCG THE STREAM                            | 113  |
| PCG LIONESS                             | 83   | <b>HALIM, JANSEN (INDONESIA)</b>          |      |
| PCG WRIGLEY                             | 84   | PCG FETCHING WATER                        | 114  |
| <b>DICKERSON, TERRY, QPSA (USA)</b>     |      | PCG HORSE RACE                            | 115  |
| PCG COTTAGE IN THE SKY (JUDGE'S CHOICE) | 85   | <b>HALPERN, NORMAN (USA)</b>              |      |
| PCG LONE CHARRO                         | 86   | PCT EXOTIC TULIP #7                       | 116  |
| <b>DOMS, LUC (BELGIUM)</b>              |      | PCT TULIP FANTASIA (HM)                   | 117  |
| PCG TREE FEMALE GYMNASTS                | 87   | PCG VERGRISS (HM)                         | 118  |
| PCG TWO HANDS (HM)                      | 88   | <b>HANDMAN, JAN (USA)</b>                 |      |
| PCG UPSIDE TO (HM)                      | 89   | PCG CLOCK APOCALYPSE                      | 119  |
| <b>DUNN, JEFF (USA)</b>                 |      | PCG JOURNEY                               | 120  |
| PCT EMBRACEABLE YOU                     | 90   | PCT PARADISE REVISITED (HM)               | 121  |
| PCG THE ARTIST AS A YOUNG GIRL          | 91   | <b>HANISCH, RALF, MPSA (GERMANY)</b>      |      |
| <b>FARLOW, CHARLOTTE, PPSA (USA)</b>    |      | PCG FLIC FLAC, RAIN LOVE                  | 122  |
| PCG SCIENCE MUSEUM                      | 92   | <b>HELMAKI, JUSSI (FINLAND)</b>           |      |
| <b>FARROW, STAN (UNITED KINGDOM)</b>    |      | PCG BOATERCROSS COMPETITORS 2             | 123  |
| PCG BEECH TREE IN WINTER                | 93   | PCG SEA SMOKE IN MIDWINTER (HM)           | 124  |
| PCG LETTER FROM YAKIMA                  | 94   | PCG SYNCHRONIZED SKATING 2                | 125  |
| <b>FISHER, DAVID I. (USA)</b>           |      | <b>HENG, ZEE KEK, GMPSA (SINGAPORE)</b>   |      |
| PCG AQUA PENCIL                         | 95   | PCG THAI BOXING CHAMPS                    | 126  |
| PCG ROCKPORT KAYAKS                     | 96   | <b>HENRY, HELEN, QPSA (USA)</b>           |      |
| <b>FRIEDMAN, STEVEN (USA)</b>           |      | PCG A SINGLE ROSE                         | 127  |
| PCG CONVERGENCE                         | 97   | PCG FIREMAN CHASE WITH HIS AXE (HM)       | 128  |
| PCG MILKY WAY RISING OVER MONO LAKE     | 98   | <b>HO ANH, TIEN (VIETNAM)</b>             |      |
| PCT SPRING BLOOM IN THE CARRIZO         | 99   | PCG HAPPY OLD AGE                         | 129  |
| <b>FU, WEI, EPSA (CANADA)</b>           |      | PCG ON THE FIRE SIDE                      | 130  |
| PCT FLOWER021                           | 100  | <b>HOCHHAUS, ALEXANDER (GERMANY)</b>      |      |
| <b>GABERTHUEL, WALTER, MPSA (ITALY)</b> |      | PCG MAGIC ICE WORLD                       | 131  |
| PCG WONDERFUL AUTUMN                    | 101  | PCG SENSE OF ETERNITY                     | 132  |
| <b>GAUL, VIKI, APSA, PPSA (CANADA)</b>  |      | <b>HORSNELL, JENNI, GMPSA (AUSTRALIA)</b> |      |
| PCG MACRO SEWING SUPPLIES 8102          | 102  | PCG BABBLER DUET 2                        | 133  |
| PCG THOSE EYES 2220                     | 103  | PCG FREE RIDE                             | 134  |
| PCT THREE PAINTED SLIPPERS 0048 (HM)    | 104  | PCT MOONLIGHT TULIPS (HM)                 | 135  |
| <b>GOLDSTEIN, ARNIE (USA)</b>           |      | PCT SOFT IRISES (JUDGE'S CHOICE)          | 136  |
| PCG CHAOS 2                             | 105  | PCT SOFT ROSES 2 (PSA BEST OF SHOW GOLD)  | 137  |
| <b>GOLDWASSER, RUTH (AUSTRALIA)</b>     |      | PCG THE CROSSING                          | 138  |
| PCG NY NIGHT LIGHTS                     | 106  | PCG THE GUARDIAN                          | 139  |



# 2018 S4C International Exhibition of Photography

## PID COLOR DIVISION ACCEPTANCES INDEX



PCG=PID Color General ; PCT=PID Color Theme

|  | Page |  | Page |
|--|------|--|------|
| PCT WHITE LILIES (S4C GOLD)                      | 140  | <b>LEDGARD, IAN, GMPSA (WALES)</b>                 |      |
| <b>HSIONG, YOUMANS (USA)</b>                     |      | PCG STRUCTURES                                     | 172  |
| PCG HORSES LOOKING GRASS IN SNOW STORM (HM)      | 141  | <b>LEE, HON-KWONG (HONG KONG)</b>                  |      |
| PCG LAKE TAHOE EARLY MORNING                     | 142  | PCG AFTER MINOR SAILING (HM)                       | 173  |
| <b>HUTCHISON, GEORGE (USA)</b>                   |      | <b>LEE, JAN, FPSA, EPSA (USA)</b>                  |      |
| PCG ALIEN LANDSCAPE                              | 143  | PCG WORLD TRAVELERS                                | 174  |
| PCG BIRD OF PARADISE                             | 144  | <b>LEE, KEN (USA)</b>                              |      |
| <b>JENKIN, BARBARA, GMPSA/B (UNITED KINGDOM)</b> |      | PCG A TREE   | 175  |
| PCG BATTLING THE WIND                            | 145  | PCT LOTU-1   | 176  |
| PCG CLOWNING AROUND                              | 146  | PCG MARIA (S4C BRONZE)                             | 177  |
| PCG DANDELION ARABESQUE                          | 147  | PCG MASK   | 178  |
| <b>JENKIN, MALCOLM, GMPSA/B (UNITED KINGDOM)</b> |      | <b>LEUNG, WING CHUNG KENNETH, EPSA (HONG KONG)</b> |      |
| PCG BALLET WITH DRAPE                            | 148  | PCG BALLET DANCER                                  | 179  |
| PCG FROGS AT PLAY                                | 149  | PCG SUNRISE FISHING                                | 180  |
| PCG THINKING VICTORIA                            | 150  | PCG THROUGH THE NET                                | 181  |
| <b>JENZER, URS (SWITZERLAND)</b>                 |      | PCG TWO HOPOES                                     | 182  |
| PCG AFRICANA 2                                   | 151  | <b>LEYLAZ MEHRABADI, MAJID (USA)</b>               |      |
| PCT MOHN 2                                       | 152  | PCG NANDAL TWILIGHT                                | 183  |
| PCG VENEDIG CARNEVALE 11                         | 153  | <b>LIN, WOLFGANG, EPSA (HONG KONG)</b>             |      |
| <b>JIAO, SHENGFU (CHINA)</b>                     |      | PCT PINKY LOTUS (HM)                               | 184  |
| PCG AURORA                                       | 154  | PCT PINKY LOTUS IN BLUE (HM)                       | 185  |
| PCG CAMEL SHADOW (HM)                            | 155  | <b>LONG, FENGYING (CHINA)</b>                      |      |
| PCG THE TIME IS RIPE                             | 156  | PCG DAURIAN REDSTART2                              | 186  |
| <b>KRAMER, IRENE (USA)</b>                       |      | PCG INNER MONGOLIA                                 | 187  |
| PCG APLOMADO FALCON DISPLAYING                   | 157  | <b>LUHMAN, FRED, EPSA (USA)</b>                    |      |
| PCT CRIMSON BEAUTIES                             | 158  | PCG WHEAT FURROWS                                  | 188  |
| PCG FALL AT THE GRIST MILL                       | 159  | <b>LUO, YAN (CHINA)</b>                            |      |
| <b>KU, MIN-SHENG, MPSA (TAIWAN)</b>              |      | PCG KAMCHATKA11                                    | 189  |
| PCT EPIDENDRUM _ 1                               | 160  | PCG NATIONAL TRAIN DAY 10                          | 190  |
| PCT WHITE PHOENIX ORCHID _ 2                     | 161  | PCG XINJIANG TAJIKS 15                             | 191  |
| <b>KUEBLER, BARBARA, APSA, MPSA (USA)</b>        |      | <b>LYNCH, CINDY (USA)</b>                          |      |
| PCG ADULT MALE KITE WITH SNAIL                   | 162  | PCG PEAR AND GRAPES                                | 192  |
| PCT HOLLYHOCK                                    | 163  | PCG PENCILS AND PLANS                              | 193  |
| PCG RED HAIREED BOY WOVEN                        | 164  | PCG WATER LILIES 1                                 | 194  |
| <b>KWAN, PHILLIP, GMPSA/G (CANADA)</b>           |      | <b>MAHONEY, JAMES, APSA, EPSA (USA)</b>            |      |
| PCG AURORA OVER DEVILS TEETH 15                  | 165  | PCG 1 HOT MOMMA IN JEANS AND SHIRT                 | 195  |
| <b>LANGEVIN, DEE, MPSA (USA)</b>                 |      | PCG DEDE IN JEANS                                  | 196  |
| PCT ANEMONE CENTER                               | 166  | PCG KATHERINE AND FUR COLLAR                       | 197  |
| PCT ANTHURIUM TRIO                               | 167  | <b>MAHONEY, ROSALIE (USA)</b>                      |      |
| <b>LARONDE, DAVID, APSA, EPSA (CANADA)</b>       |      | PCG SEEING DOUBLE                                  | 198  |
| PCT DOUBLE PINK (HM)                             | 168  | <b>MASLIN, DAVID M, EPSA (UNITED KINGDOM)</b>      |      |
| PCT WET FROM THE RAIN                            | 169  | PCG VICTORIAH 145 (JUDGE'S CHOICE)                 | 199  |
| <b>LARRY, JOHN (UNITED KINGDOM)</b>              |      | <b>MAUNG, THI HA (MYANMAR)</b>                     |      |
| PCG FERNS  | 170  | PCG I AM HERE                                      | 200  |
| PCG WOLF   | 171  | PCG PREPARATION FOR NET                            | 201  |



# 2018 S4C International Exhibition of Photography

## PID COLOR DIVISION ACCEPTANCES INDEX



PCG=PID Color General ; PCT=PID Color Theme

|  | Page |   | Page |
|--|------|---|------|
| <b>MCMILLAN, DEE (USA)</b>                   |      | <b>PECK, DIANE (USA)</b>                              |      |
| PCG BLUE INK WELLS (HM)                      | 202  | PCT BEAUTIFUL IRIS                                    | 235  |
| PCT CHERRY BLOSSOMS TWO                      | 203  | PCG BLUE DOOR AND BRICKS                              | 236  |
| PCT COOL ICELAND POPPY (JUDGE'S CHOICE)      | 204  | PCT ISOLATED WATER LILY                               | 237  |
| PCT ORANGE ZINNIA IN GLASS                   | 205  | <b>PEER, ALBERT (AUSTRIA)</b>                         |      |
| PCG VASE                                     | 206  | PCT GENTIANA PANNONICA                                | 238  |
| <b>MEISENHEIMER, DAVID, FPSA, GMPA (USA)</b> |      | PCT WILLOW GENTIAN                                    | 239  |
| PCG MATING PLUMAGE                           | 207  | <b>PETERSON, MICHELE, QPSA (USA)</b>                  |      |
| PCG OSPREY FAMILY                            | 208  | PCG SNOWBIRDS2  | 240  |
| PCG PORTLAND HEAD AND SHIP                   | 209  | PCT WARPED TULIP                                      | 241  |
| <b>MOORE, HOLLY, PPSA (USA)</b>              |      | <b>PLUZHNIKOV, NATALYA, PPSA (USA)</b>                |      |
| PCT LOTUS FLOWER ON BLACK                    | 210  | PCG HUMMINGBIRD ON FURRY HELICONIA                    | 242  |
| PCG SELFIE WITH ROYALTY                      | 211  | <b>POP, OVI D (ROMANIA)</b>                           |      |
| <b>MORATA, ALAIN, GPUCR2 (FRANCE)</b>        |      | PCG WEATHER SNAKE                                     | 243  |
| PCG DEB 2 HUILES (JUDGE'S CHOICE)            | 212  | <b>PRISLIPSKY, SHARON (USA)</b>                       |      |
| <b>MORGAN, PETER (UNITED KINGDOM)</b>        |      | PCT CACTUS FLOWER                                     | 244  |
| PCG RAINY DAY REFLECTIONS                    | 213  | PCG EVENING AT PICTURED ROCKS (PSA BEST OF SHOW GOLD) | 245  |
| <b>NEMEROFF, IRA, MPSA (USA)</b>             |      | PCT STAR OF BETHLEHEM (S4C SILVER)                    | 246  |
| PCT FLOWER 142                               | 214  | PCG THE OLD MILL IN SPRINGTIME                        | 247  |
| PCT ORCHIDS 66                               | 215  | PCT WATER GARDEN NO. 6                                | 248  |
| PCT ORCHIDS 79                               | 216  | PCG WHEN THE DEEP PURPLE FALLS (HM)                   | 249  |
| PCT SELBY 70                                 | 217  | PCG WINDING ROAD                                      | 250  |
| <b>NEO, SAU FONG (MALAYSIA)</b>              |      | <b>RITCHIE, NOEL (AUSTRALIA)</b>                      |      |
| PCG CLASSIC BALLERINA (S4C BRONZE)           | 218  | PCG AKA JAMES HARRISON                                | 251  |
| PCG HANDMADE BASKET                          | 219  | PCT CHRYSANTHEMUM ORANGE                              | 252  |
| PCG YOUNG HEROINE                            | 220  | PCG CORMORANT FISHERMAN                               | 253  |
| <b>NGUYEN, HUONG HOA (USA)</b>               |      | <b>RUNYAN, TRUDY, EPSA (USA)</b>                      |      |
| PCT BEE AND SUNFLOWER                        | 221  | PCG NAUTILUS REFLECTION (HM)                          | 254  |
| PCG BUTTERFLY AND SUNFLOWER 04               | 222  | PCG PRETTY PEARLS (HM)                                | 255  |
| PCT LOTUS BLOSSOMS TIME                      | 223  | PCT TULIP OPENING                                     | 256  |
| PCT POPPY AFTER RAIN                         | 224  | <b>SALDANA, DENISE (USA)</b>                          |      |
| <b>OHARI, FERIANA (INDONESIA)</b>            |      | PCG BLUE-EYED DARNER ON STALK                         | 257  |
| PCG HARBOUR BRIDGE                           | 225  | PCT GLOWING TULIP                                     | 258  |
| <b>OSBORNE, DONNA (USA)</b>                  |      | PCT HALF OPEN SUNFLOWERS (S4C BRONZE)                 | 259  |
| PCG GRANDEUR                                 | 226  | PCG PAIR OF RED DRAGONFLIES                           | 260  |
| <b>OSWALD, KRISTINA (USA)</b>                |      | PCG STALKING TIGER FROG                               | 261  |
| PCT BASKET OF ROSES                          | 227  | <b>SAMOYAU, GUY B., APSA, GMPA (FRANCE)</b>           |      |
| PCG MUSIC FUR ELISE                          | 228  | PCG RASE MOTTES                                       | 262  |
| PCT PINK COSMOS IN BASKET                    | 229  | <b>SCHNELZER, J.R., APSA, PPSA (USA)</b>              |      |
| PCT ROMANCE                                  | 230  | PCG 2 MILK CANS                                       | 263  |
| PCT SWEETHEART ROSES (HM)                    | 231  | PCG BARN & MOON                                       | 264  |
| <b>PAPULIS, RAY (AUSTRALIA)</b>              |      | PCT BENT ASTER (HM)                                   | 265  |
| PCT BIRDSFOOT TREFOIL                        | 232  | PCG PUMPKIN FIELD                                     | 266  |
| <b>PASSUELLO, ELIZABETH (NEW ZEALAND)</b>    |      | <b>SCHREIBER, ELLA (USA)</b>                          |      |
| PCG BROADSIDE IN THE BREAKERS                | 233  | PCG A GRAND HEAD DRESS                                | 267  |
| PCG THE DANCE                                | 234  | PCG ALAMO LAKE-MILKY WAY                              | 268  |



# 2018 S4C International Exhibition of Photography

## PID COLOR DIVISION ACCEPTANCES INDEX



PCG=PID Color General ; PCT=PID Color Theme

|  | Page |   | Page |
|--|------|---|------|
| <b>SCIFRES, PETER (USA)</b>                      |      | PCT LONELY                                | 302  |
| PCG ZION NARROWS AND YELLOW TREE                 | 269  | PCT RHODODENDRON                          | 303  |
| <b>SCOTT, JEANNE (USA)</b>                       |      | <b>THOMPSON, LYNN, FPSA, MPSA (USA)</b>   |      |
| PCG CYMBIDIUM ORCHID 1602                        | 270  | PCG FEEDING AT PENSTEMON                  | 304  |
| PCG MILKY WAY OVER BUCKLEY POND                  | 271  | PCT LUPINS IN BLOOM, ICELAND (S4C BRONZE) | 305  |
| PCG MILKY WAY WITH YUCCAS B7407                  | 272  | <b>THOMSON, JIM, FRPS (AUSTRALIA)</b>     |      |
| PCG YOSEMITE MILKY WAY B7207                     | 273  | PCG AZURE STRIKE 1A (HM)                  | 306  |
| <b>SHAIKH, AMIN, FPSA, GMPSA (PAKISTAN)</b>      |      | PCG OSPREY 1A                             | 307  |
| PCT BEAUTY OF STAMEN - 2                         | 274  | <b>TO, NGOCAN (USA)</b>                   |      |
| PCG GOLDEN LIGHT ON ARCHES                       | 275  | PCG LINGERING CLOUDS OVER TERRACES        | 308  |
| PCT INNER BEAUTY OF ORCHID - 2                   | 276  | <b>TRAN, SA KIM (USA)</b>                 |      |
| PCG NYC IN MOON LIGHT                            | 277  | PCT PAPHIOPEDILUM ORCHID 1319             | 309  |
| PCG WINNER                                       | 278  | PCG WILD FLOWERS 972                      | 310  |
| <b>SHARAFUDDIN, SHAHID, PPSA (CANADA)</b>        |      | <b>TSIM, WAI MAN, MPSA (AUSTRALIA)</b>    |      |
| PCG REFLECTION AFTER RAIN                        | 279  | PCG PEACOCK DANCE                         | 311  |
| <b>SMITH, ROY (SCOTLAND)</b>                     |      | <b>VALLON, SERGE (FRANCE)</b>             |      |
| PCG AFTERLIGHT                                   | 280  | PCG DU ROCHER AU BORD DE MER              | 312  |
| PCG CUMBRIAN STEAM                               | 281  | PCG GRAND ESCALIER COLIMAÇON              | 313  |
| PCT DANDELION SEED HEAD                          | 282  | PCG VILLAGE ANCIEN EGUISHEIM              | 314  |
| PCT EXPLOSION (HM)                               | 283  | <b>VAN LANGENHOVEN, THOMAS (USA)</b>      |      |
| PCT PULSATILLA (S4C BRONZE)                      | 284  | PCG VINTAGE                               | 315  |
| PCG STORM WAVE                                   | 285  | <b>VAUTRIN, INGE (USA)</b>                |      |
| <b>STAKE, JAN-THOMAS, GMPSA (SWEDEN)</b>         |      | PCG DUSK AT THE NORTH SEA                 | 316  |
| PCG BONGELINE 7109 (S4C SILVER)                  | 286  | PCG SHOWER OF COLORS                      | 317  |
| PCG KAJSA 9533                                   | 287  | <b>VIJAYAN, THOMAS (CANADA)</b>           |      |
| PCG KAJSA BROWN NECKLACE (S4C SILVER)            | 288  | PCG KRILL VIEW (HM)                       | 318  |
| PCG ME ALF AND TEDDY                             | 289  | PCG SNOWY BEAR                            | 319  |
| <b>STANFORD, PETER (UNITED KINGDOM)</b>          |      | <b>VOELTNER, MIKE (USA)</b>               |      |
| PCG HARSH WINTER IN SCOTLAND (HM)                | 290  | PCT EMERGING SUNFLOWER                    | 320  |
| PCG THE GUNNERS                                  | 291  | PCT HEART OF THE DAYLILY                  | 321  |
| <b>STEWART, GAIL (USA)</b>                       |      | PCG LAKE TRAHLYTA SHORELINE               | 322  |
| PCG CORMORANT ON ICEBERG                         | 292  | PCT PURPLE IRIS (HM)                      | 323  |
| <b>SULOEV, ALEXEY, PPSA (RUSSIAN FEDERATION)</b> |      | <b>WADE, ALAN (UNITED KINGDOM)</b>        |      |
| PCG HUNTING - ALASKA                             | 293  | PCG KHAI REILY-LE BORGE                   | 324  |
| <b>SUN, JIJUN (CHINA)</b>                        |      | <b>WAN, YI, GMPSA (CHINA)</b>             |      |
| PCG AUTUMN IN THE MOUNTAIN VILLAGE               | 294  | PCG GROTTO                                | 325  |
| PCT COMPANY (S4C SILVER)                         | 295  | PCT LOTUS10                               | 326  |
| <b>TABORDA, JOAO, PPSA (PORTUGAL)</b>            |      | <b>WANG, LI (CHINA)</b>                   |      |
| PCG YOUNG FUN                                    | 296  | PCG GO TO SEA (HM)                        | 327  |
| <b>TAN, LEE ENG (SINGAPORE)</b>                  |      | PCG SET SAIL                              | 328  |
| PCG PHATTHALUNG FISHERMAN                        | 297  | <b>WANG, LUNG-TSAI (TAIWAN)</b>           |      |
| PCG VIETNAM SAND DUNES                           | 298  | PCG AKA VILLAGE24 (HM)                    | 329  |
| PCG VIETNAMESE FISHMONGER (HM)                   | 299  | PCG TEMPLE FAIR15                         | 330  |
| <b>TEUSCHEL, PETER, PPSA (GERMANY)</b>           |      | <b>WAT, JAMES (USA)</b>                   |      |
| PCG FRITZ THE FLY                                | 300  | PCT A BUNCH OF BEAUTIES                   | 331  |
| PCG GRAY   | 301  | PCG A FRUITFUL HEFT OF CATCH              | 332  |



## 2018 S4C International Exhibition of Photography

### PID COLOR DIVISION ACCEPTANCES INDEX



PCG=PID Color General ; PCT=PID Color Theme

|   | Page |                              | Page |
|---|------|------------------------------|------|
| PCT BEAUTIFUL ROSE MEANS YOU (HM)           | 333  | PCG OMO RIVER VALLEY3        | 366  |
| PCG HIMALAYA IN MORNING NEPAL               | 334  | PCG THE AFRICAN CHILDREN9    | 367  |
| <b>WAYCIE, TINA (USA)</b>                   |      | <b>YE, DANLEI (CANADA)</b>   |      |
| PCG AMAZING COLORS                          | 335  | PCG NENETS CHILD6            | 368  |
| PCG CANOLA FLOWER FIELD                     | 336  | PCG SICHUAN TEAHOUSE7        | 369  |
| PCG CANYONLANDS, UTAH (CHAIR'S AWARD - GPU) | 337  | <b>ZHANG, XIAOQI (CHINA)</b> |      |
| <b>WHITE, JOHN (USA)</b>                    |      | PCG THE GREAT WALL3          | 370  |
| PCG DEATH VALLEY MORNING 3126               | 338  | <b>ZHU, HANJU (CHINA)</b>    |      |
| PCT HIBISCUS TRIO 0733                      | 339  | PCG MOONLIGHT BEAUTY         | 371  |
| PCT LILY 2576 (HM)                          | 340  |                              |      |
| PCG MT HOOD SUNRISE                         | 341  |                              |      |
| PCG PALOUSE RIVER 2632                      | 342  |                              |      |
| PCT TULIPS AND CRYSTAL BALL 3512            | 343  |                              |      |
| <b>WHITE, LARRY (USA)</b>                   |      |                              |      |
| PCT ANGEL'S TRUMPET IN COLOR                | 344  |                              |      |
| PCG BUBBLES LADY                            | 345  |                              |      |
| PCG ROBERTS COTTAGES                        | 346  |                              |      |
| PCT THE TULIP (HM)                          | 347  |                              |      |
| <b>WHITSON, DAVE, APSA, PPSA (USA)</b>      |      |                              |      |
| PCG TESS 5                                  | 348  |                              |      |
| <b>WILKINS, DAVID (USA)</b>                 |      |                              |      |
| PCG ICEBERG IN GREENLAND 1236               | 349  |                              |      |
| <b>WILLEMS, RON (NEW ZEALAND)</b>           |      |                              |      |
| PCG MRS PICKWICK                            | 350  |                              |      |
| PCG UNDER SIEGE                             | 351  |                              |      |
| <b>WILLS, DORINDA, QPSA (USA)</b>           |      |                              |      |
| PCG BLUE EYED BEAUTY                        | 352  |                              |      |
| PCG NEW LIFE                                | 353  |                              |      |
| <b>WOLLEAT, KATHLEEN (USA)</b>              |      |                              |      |
| PCG CATHEDRAL OF PINES                      | 354  |                              |      |
| PCG FROZEN (HM)                             | 355  |                              |      |
| <b>WONG, GODFREY, GMPA (USA)</b>            |      |                              |      |
| PCG FROM THE SKY                            | 356  |                              |      |
| PCG NEED MORE PRACTICE                      | 357  |                              |      |
| PCG STRUGGLING 2                            | 358  |                              |      |
| <b>WONG, LORETTA YAT (HONG KONG)</b>        |      |                              |      |
| PCG LAOS12                                  | 359  |                              |      |
| PCG THE NENETS CAMPSITE11                   | 360  |                              |      |
| <b>WOODINGTON, ANNE (GUERNSEY)</b>          |      |                              |      |
| PCG MISTY MORNING FISHING                   | 361  |                              |      |
| PCG SNOWSTORM APPROACHING                   | 362  |                              |      |
| <b>XU, XIAOMEI, MPSA (CHINA)</b>            |      |                              |      |
| PCG SURVIVE                                 | 363  |                              |      |
| PCG THE THREE MUSKETEERS                    | 364  |                              |      |
| <b>YAN, BIN (CHINA)</b>                     |      |                              |      |
| PCG OMO RIVER VALLEY10                      | 365  |                              |      |



**“ARTICHOKE FLOWER”**  
**© SHIRL AIROV-BIELING, QPSA**  
**2018 S4C International Exhibition of Photography**  
**PID Color Theme - Flower(s)**

PID Color Page 10

<https://www.s4c-ex.org/>



**“LADY IN A MASK”**  
**© SHIRL AIROV-BIELING, QPSA**  
**2018 S4C International Exhibition of Photography**  
**PID Color General**



**“MAGENTA ROSE”**  
**© SHIRL AIROV-BIELING, QPSA**  
**2018 S4C International Exhibition of Photography**  
**PID Color Theme - Flower(s)**

PID Color Page 12

<https://www.s4c-ex.org/>



**“THREE FLAMINGOS”**  
**© SHIRL AIROV-BIELING, QPSA**  
**2018 S4C International Exhibition of Photography**  
**PID Color General**

PID Color Page 13

<https://www.s4c-ex.org/>



**“WICKE1”**  
**© URS ALBRECHT, MPSA**  
**2018 S4C International Exhibition of Photography**  
**PID Color Theme - Flower(s)**

PID Color Page 14

<https://www.s4c-ex.org/>



**“SWEET ELIZABETH ANNE”**  
**© DIANE ANDERSON**  
**2018 S4C International Exhibition of Photography**  
**PID Color General**

PID Color Page 15

<https://www.s4c-ex.org/>



**“BORAGE”**  
**© JOAN AUSTIN, QPSA**  
**2018 S4C International Exhibition of Photography**  
**PID Color Theme - Flower(s)**

PID Color Page 16

<https://www.s4c-ex.org/>



**“GOING HOME”**  
**© JOAN AUSTIN, QPSA**  
**2018 S4C International Exhibition of Photography**  
**PID Color General**

PID Color Page 17

<https://www.s4c-ex.org/>



**“IN THE PINK”**  
**© JOAN AUSTIN, QPSA**  
**2018 S4C International Exhibition of Photography**  
**PID Color Theme - Flower(s)**

PID Color Page 18

<https://www.s4c-ex.org/>



**“LONG ABANDONED”**  
**© JOAN AUSTIN, QPSA**  
**2018 S4C International Exhibition of Photography**  
**PID Color General**

PID Color Page 19

<https://www.s4c-ex.org/>



**“OTTER PUPS”**  
**© JOAN AUSTIN, QPSA**  
**2018 S4C International Exhibition of Photography**  
**PID Color General**

PID Color Page 20

<https://www.s4c-ex.org/>



**“LILY AND BEE”**  
**© JANET BALLARD, PPSA**  
**2018 S4C International Exhibition of Photography**  
**PID Color Theme - Flower(s)**

PID Color Page 21

<https://www.s4c-ex.org/>



**“CONVICT LAKE 40”  
© JOHN BEISHKE  
2018 S4C International Exhibition of Photography  
PID Color General**



**“GREEN AND WHITE ORNAMENTAL CABBAGE”**  
**© JOHN BEISHKE**  
**2018 S4C International Exhibition of Photography**  
**PID Color General**

PID Color Page 23

<https://www.s4c-ex.org/>



**“RED SHOULDERED HAWK”**  
**© BOB BENSON, APSA, PPSA**  
**2018 S4C International Exhibition of Photography**  
**PID Color General**

PID Color Page 24

<https://www.s4c-ex.org/>



**“REFLECTED COLUMBINE #2”**  
**© BOB BENSON, APSA, PPSA**  
**2018 S4C International Exhibition of Photography**  
**PID Color Theme - Flower(s)**  
**Judge’s Choice**

PID Color Page 25

<https://www.s4c-ex.org/>



**“TETON BARN”**  
**© BOB BENSON, APSA, PPSA**  
**2018 S4C International Exhibition of Photography**  
**PID Color General**

PID Color Page 26

<https://www.s4c-ex.org/>



**“THE LOUVRE COLOR”**  
**© BOB BENSON, APSA, PPSA**  
**2018 S4C International Exhibition of Photography**  
**PID Color General**

PID Color Page 27

<https://www.s4c-ex.org/>



**“UNOPENED COLUMBINE”**  
**© BOB BENSON, APSA, PPSA**  
**2018 S4C International Exhibition of Photography**  
**PID Color Theme - Flower(s)**

PID Color Page 28

<https://www.s4c-ex.org/>



**“MAGENTA WATER LILY”**  
**© PEGGY BENSON**  
**2018 S4C International Exhibition of Photography**  
**PID Color Theme - Flower(s)**



**“REFLECTION AT KINDERDIJK”**  
**© PEGGY BENSON**  
**2018 S4C International Exhibition of Photography**  
**PID Color General**

PID Color Page 30

<https://www.s4c-ex.org/>



**“YELLOW HIBISCUS”  
© PEGGY BENSON  
2018 S4C International Exhibition of Photography  
PID Color Theme - Flower(s)**



**“ILULLISAT\_1”**  
**© ALOIS BERNKOPF DR, EFIAP/S, GPU CR4**  
**2018 S4C International Exhibition of Photography**  
**PID Color General**

PID Color Page 32

<https://www.s4c-ex.org/>



**“SANDSTONE AT SUNSET 9421”  
© DONALD BROWN, APSA, PPSA  
2018 S4C International Exhibition of Photography  
PID Color General**

PID Color Page 33

<https://www.s4c-ex.org/>



**“COLORS OF COUNTRYSIDE 10”  
© PIETRO BUGLI  
2018 S4C International Exhibition of Photography  
PID Color General**

PID Color Page 34  
<https://www.s4c-ex.org/>



**“PASSION FLOWERS 7”**  
**© PIETRO BUGLI**  
**2018 S4C International Exhibition of Photography**  
**PID Color Theme - Flower(s)**

PID Color Page 35

<https://www.s4c-ex.org/>



**“TUSCAN COUNTRYSIDE 9”  
© PIETRO BUGLI  
2018 S4C International Exhibition of Photography  
PID Color General**



**“GETTING THE NECTAR”**  
**© BARBARA BURKE**  
**2018 S4C International Exhibition of Photography**  
**PID Color General**

PID Color Page 37

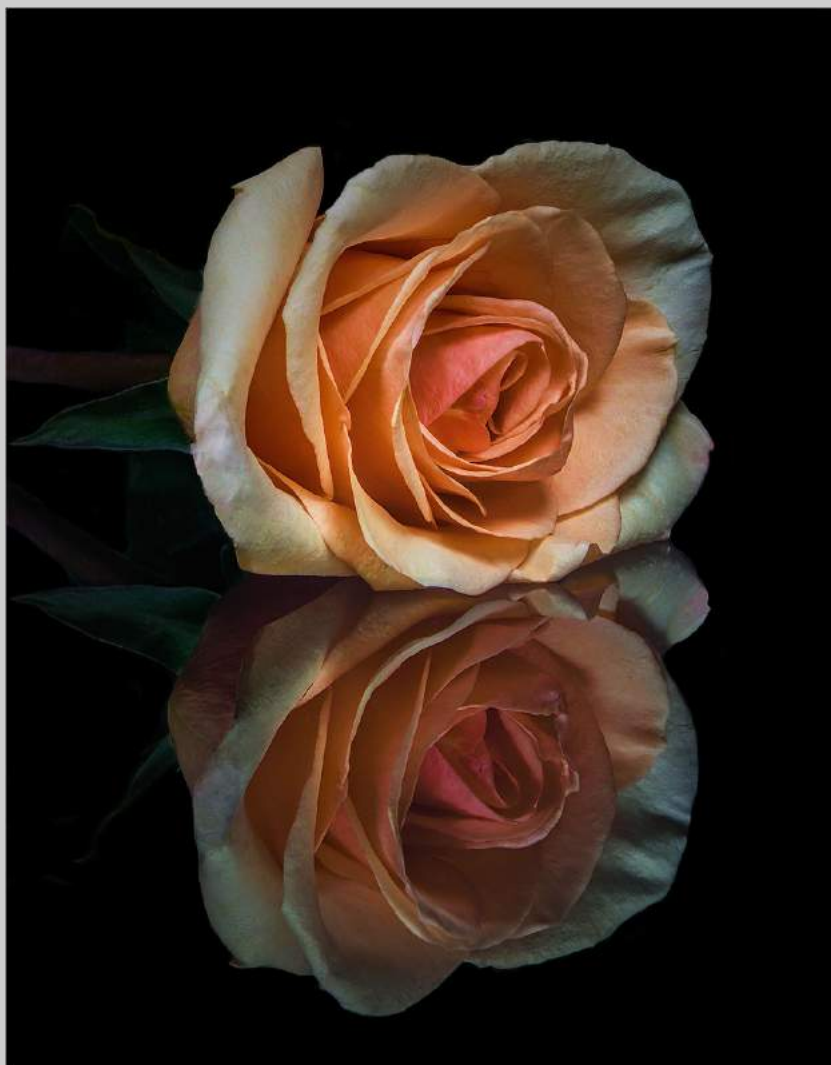
<https://www.s4c-ex.org/>



**“PINK N YELLOW BEAUTY”  
© BARBARA BURKE  
2018 S4C International Exhibition of Photography  
PID Color Theme - Flower(s)**

PID Color Page 38

<https://www.s4c-ex.org/>



**“PRETTY AS A PEACH”**  
**© BARBARA BURKE**  
**2018 S4C International Exhibition of Photography**  
**PID Color Theme - Flower(s)**



**“SUNRISE IN KENTUCKY”**  
**© GARY BUTLER**  
**2018 S4C International Exhibition of Photography**  
**PID Color General**

PID Color Page 40

<https://www.s4c-ex.org/>



**“INDIGO IRIS”**  
**© KIM CAMERON**  
**2018 S4C International Exhibition of Photography**  
**PID Color Theme - Flower(s)**



**“LIPSTICK PINK”  
© KIM CAMERON  
2018 S4C International Exhibition of Photography  
PID Color Theme - Flower(s)**

PID Color Page 42

<https://www.s4c-ex.org/>



**“THE CALLA LILIES ARE IN BLOOM”**  
**© KIM CAMERON**  
**2018 S4C International Exhibition of Photography**  
**PID Color Theme - Flower(s)**



**“LOTUS 4039”**  
**© NAN CARDER, APSA, MPSA**  
**2018 S4C International Exhibition of Photography**  
**PID Color Theme - Flower(s)**

PID Color Page 44

<https://www.s4c-ex.org/>



**“PEACOCK 9892”**  
**© NAN CARDER, APSA, MPSA**  
**2018 S4C International Exhibition of Photography**  
**PID Color General**  
**HM**

PID Color Page 45

<https://www.s4c-ex.org/>



**“ALL FOR YOU”**  
**© ARNALDO PAULO CHE**  
**2018 S4C International Exhibition of Photography**  
**PID Color General**

PID Color Page 46

<https://www.s4c-ex.org/>



**“ALONG THE COASTLINE 1”  
© ARNALDO PAULO CHE  
2018 S4C International Exhibition of Photography  
PID Color General**

PID Color Page 47

<https://www.s4c-ex.org/>



**“DIVE FOR THE WIN 2”  
© ARNALDO PAULO CHE  
2018 S4C International Exhibition of Photography  
PID Color General**

PID Color Page 48

<https://www.s4c-ex.org/>



**“BEAUTIFUL PINK LOTUS”  
© SHERMAN CHEANG  
2018 S4C International Exhibition of Photography  
PID Color Theme - Flower(s)**

PID Color Page 49

<https://www.s4c-ex.org/>



**“BEAUTIFUL WHITE LOTUS”  
© SHERMAN CHEANG  
2018 S4C International Exhibition of Photography  
PID Color Theme - Flower(s)**

PID Color Page 50

<https://www.s4c-ex.org/>



**“CLEANING FISHING NET”**  
**© SHERMAN CHEANG**  
**2018 S4C International Exhibition of Photography**  
**PID Color General**

PID Color Page 51

<https://www.s4c-ex.org/>



**“PINK LOTUS HEART”  
© SHERMAN CHEANG  
2018 S4C International Exhibition of Photography  
PID Color Theme - Flower(s)**

PID Color Page 52

<https://www.s4c-ex.org/>



**“SLIPPER ORCHID”**  
**© SHERMAN CHEANG**  
**2018 S4C International Exhibition of Photography**  
**PID Color Theme - Flower(s)**

PID Color Page 53

<https://www.s4c-ex.org/>



**“GOLDEN EAGLE 12”**  
**© KOON NAM CHEUNG, MPSA**  
**2018 S4C International Exhibition of Photography**  
**PID Color General**

PID Color Page 54

<https://www.s4c-ex.org/>



**“HAWK OWL A16”**  
**© KOON NAM CHEUNG, MPSA**  
**2018 S4C International Exhibition of Photography**  
**PID Color General**

PID Color Page 55

<https://www.s4c-ex.org/>



**“HAWK OWL A22”**  
**© KOON NAM CHEUNG, MPSA**  
**2018 S4C International Exhibition of Photography**  
**PID Color General**

PID Color Page 56

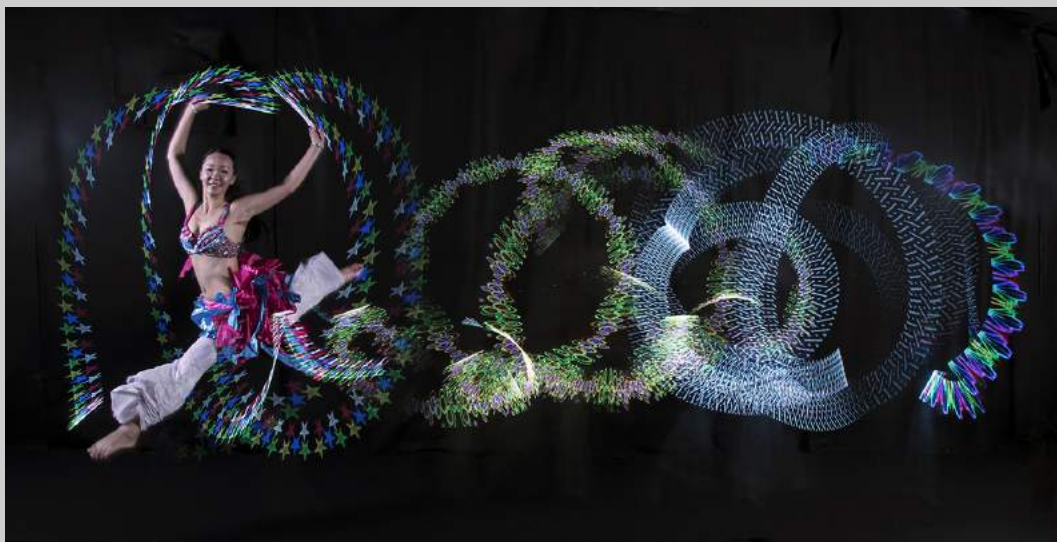
<https://www.s4c-ex.org/>



**“SNOWY OWL A01”  
© KOON NAM CHEUNG, MPSA  
2018 S4C International Exhibition of Photography  
PID Color General**

PID Color Page 57

<https://www.s4c-ex.org/>



**“GLOW DANCE”  
© HSIULING CHIU  
2018 S4C International Exhibition of Photography  
PID Color General  
S4C Bronze**

PID Color Page 58

<https://www.s4c-ex.org/>



**“UNDERWATER DANCE”**  
**© HSIULING CHIU**  
**2018 S4C International Exhibition of Photography**  
**PID Color General**

PID Color Page 59

<https://www.s4c-ex.org/>



**“AUTUMN”**  
**© YUCHIEH CHIU**  
**2018 S4C International Exhibition of Photography**  
**PID Color General**

PID Color Page 60

<https://www.s4c-ex.org/>



**“JUMPING SAND”  
© YUCHIEH CHIU  
2018 S4C International Exhibition of Photography  
PID Color General**

PID Color Page 61

<https://www.s4c-ex.org/>



**“RURAL LIFE”  
© YUCHIEH CHIU  
2018 S4C International Exhibition of Photography  
PID Color General**



**“SHADOW PLAY”**  
**© YUCHIEH CHIU**  
**2018 S4C International Exhibition of Photography**  
**PID Color General**  
**HM**

PID Color Page 63

<https://www.s4c-ex.org/>



**“CANNA REVIVAL”**  
**© ROBERT CHRISTMAN**  
**2018 S4C International Exhibition of Photography**  
**PID Color Theme - Flower(s)**

PID Color Page 64

<https://www.s4c-ex.org/>



**“LAVENDER TWINS”**  
**© ROBERT CHRISTMAN**  
**2018 S4C International Exhibition of Photography**  
**PID Color Theme - Flower(s)**

PID Color Page 65

<https://www.s4c-ex.org/>



**“ORCHIDS CIRCLING”**  
**© ROBERT CHRISTMAN**  
**2018 S4C International Exhibition of Photography**  
**PID Color Theme - Flower(s)**

PID Color Page 66

<https://www.s4c-ex.org/>



**“TRUCKERS RAINY DAY”**  
**© ROBERT CHRISTMAN**  
**2018 S4C International Exhibition of Photography**  
**PID Color General**

PID Color Page 67

<https://www.s4c-ex.org/>



**"TULIPS IN YELLOW"**  
**© ROBERT CHRISTMAN**  
**2018 S4C International Exhibition of Photography**  
**PID Color Theme - Flower(s)**

PID Color Page 68

<https://www.s4c-ex.org/>



**“EILEAN DONAN CASTLE SCOTLAND”  
© PETER CLARK, APSA, MPSA  
2018 S4C International Exhibition of Photography  
PID Color General  
S4C Gold**

PID Color Page 69

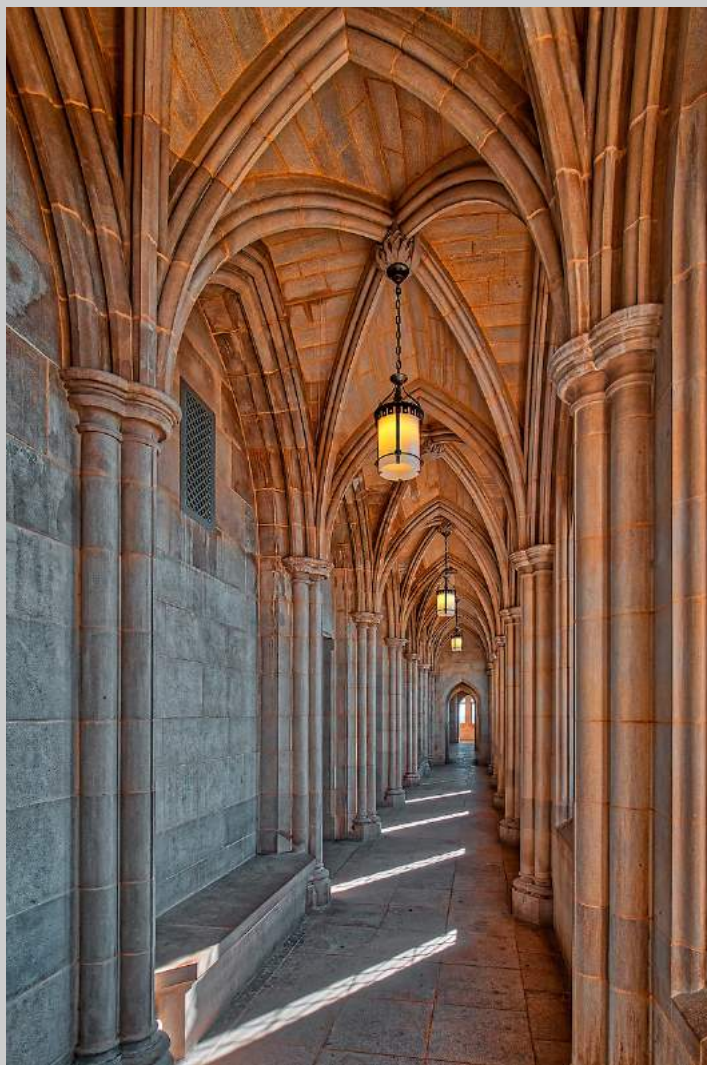
<https://www.s4c-ex.org/>



**“HVERIR GEOTHERMAL SUNRISE”  
© PETER CLARK, APSA, MPSA  
2018 S4C International Exhibition of Photography  
PID Color General**

PID Color Page 70

<https://www.s4c-ex.org/>



**“NATIONAL CATHEDRAL CORRIDOR”  
© RICHARD CLORAN, HONPSA, MPSA  
2018 S4C International Exhibition of Photography  
PID Color General**

PID Color Page 71

<https://www.s4c-ex.org/>



**“SCHWABACHER BEAVER POND”**  
**© RICHARD CLORAN, HONPSA, MPSA**  
**2018 S4C International Exhibition of Photography**  
**PID Color General**

PID Color Page 72

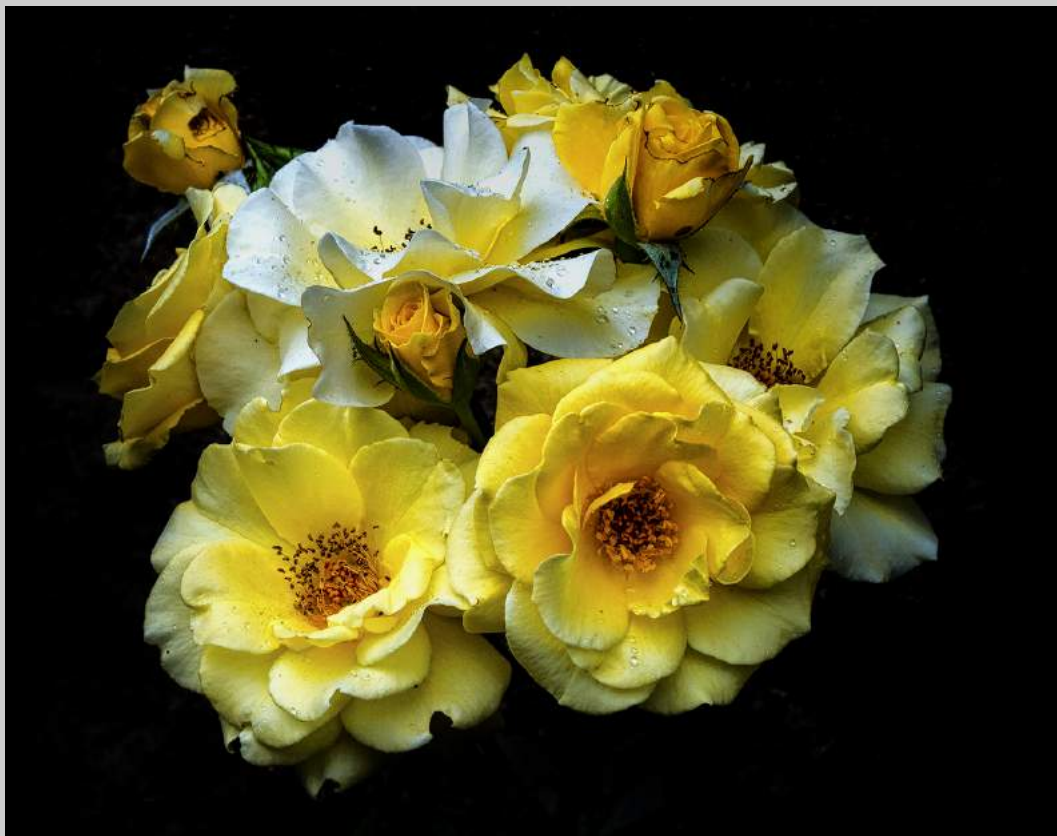
<https://www.s4c-ex.org/>



**“FALLEN BLOSSOM”**  
**© HOLLY KIRKLAND CLOUSER**  
**2018 S4C International Exhibition of Photography**  
**PID Color Theme - Flower(s)**

PID Color Page 73

<https://www.s4c-ex.org/>



**“MOSTLY YELLOW ROSES”**  
**© JAMES COLLIER**  
**2018 S4C International Exhibition of Photography**  
**PID Color Theme - Flower(s)**

PID Color Page 74

<https://www.s4c-ex.org/>



**“STUDY IN BLUE”**  
**© JAMES COLLIER**  
**2018 S4C International Exhibition of Photography**  
**PID Color Theme - Flower(s)**



**“TEAM WORK”**  
**© JAMES COLLIER**  
**2018 S4C International Exhibition of Photography**  
**PID Color General**



**“ROOSJE”**  
**© JOS CUPPENS, EPSA**  
**2018 S4C International Exhibition of Photography**  
**PID Color General**



**“HONFLEUR”**  
**© BRIAN DAVIS**  
**2018 S4C International Exhibition of Photography**  
**PID Color General**



**“CYCLIST IN THE WATER”**  
**© SHIRLEY DAVIS**  
**2018 S4C International Exhibition of Photography**  
**PID Color General**

PID Color Page 79

<https://www.s4c-ex.org/>



**“DAHLIA & RAINDROPS”**  
**© DONALD DEDONATO**  
**2018 S4C International Exhibition of Photography**  
**PID Color Theme - Flower(s)**

PID Color Page 80

<https://www.s4c-ex.org/>



**“DOUBLE TROUBLE”**  
**© DONALD DEDONATO**  
**2018 S4C International Exhibition of Photography**  
**PID Color General**

PID Color Page 81

<https://www.s4c-ex.org/>



**“LION PORTRAIT”**  
**© DONALD DEDONATO**  
**2018 S4C International Exhibition of Photography**  
**PID Color General**



**“LIONESSE”**  
**© DONALD DEDONATO**  
**2018 S4C International Exhibition of Photography**  
**PID Color General**



**“WRIGLEY”**  
**© DONALD DEDONATO**  
**2018 S4C International Exhibition of Photography**  
**PID Color General**

PID Color Page 84

<https://www.s4c-ex.org/>



**"COTTAGE IN THE SKY"**  
**© TERRY DICKERSON, QPSA**  
**2018 S4C International Exhibition of Photography**  
**PID Color General**  
**Judge's Choice**

PID Color Page 85

<https://www.s4c-ex.org/>



**“LONE CHARRO”**  
**© TERRY DICKERSON, QPSA**  
**2018 S4C International Exhibition of Photography**  
**PID Color General**

PID Color Page 86

<https://www.s4c-ex.org/>



**“TREE FEMALE GYMNASTS”**  
© LUC DOMS  
2018 S4C International Exhibition of Photography  
PID Color General



**“TWO HANDS”**  
**© LUC DOMS**  
**2018 S4C International Exhibition of Photography**  
**PID Color General**  
**HM**

PID Color Page 88

<https://www.s4c-ex.org/>



**“UPSIDE TO”**  
**© LUC DOMS**  
**2018 S4C International Exhibition of Photography**  
**PID Color General**  
**HM**

PID Color Page 89  
<https://www.s4c-ex.org/>



**“EMBRACEABLE YOU”**  
**© JEFF DUNN**  
**2018 S4C International Exhibition of Photography**  
**PID Color Theme - Flower(s)**



**“THE ARTIST AS A YOUNG GIRL”  
© JEFF DUNN  
2018 S4C International Exhibition of Photography  
PID Color General**

PID Color Page 91

<https://www.s4c-ex.org/>



**“SCIENCE MUSEUM”**  
**© CHARLOTTE FARLOW, PPSA**  
**2018 S4C International Exhibition of Photography**  
**PID Color General**

PID Color Page 92

<https://www.s4c-ex.org/>



**“BEECH TREE IN WINTER”  
© STAN FARROW  
2018 S4C International Exhibition of Photography  
PID Color General**



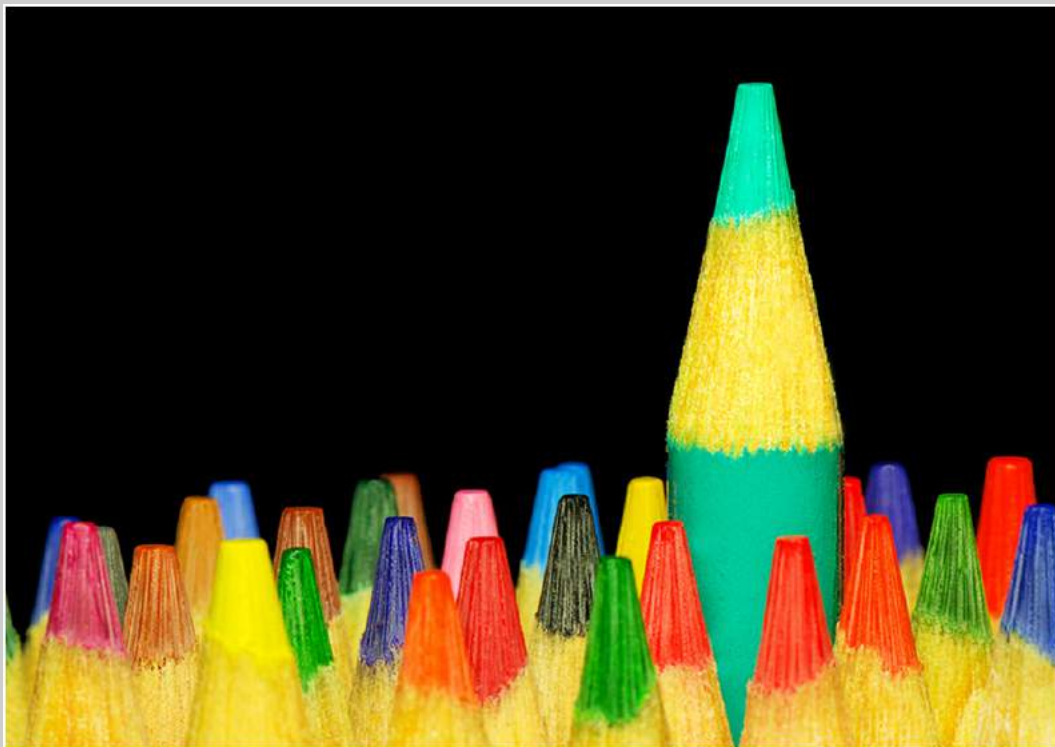
**“LETTER FROM YAKIMA”**

**© STAN FARROW**

**2018 S4C International Exhibition of Photography  
PID Color General**

PID Color Page 94

<https://www.s4c-ex.org/>



**“AQUA PENCIL”  
© DAVID I. FISHER  
2018 S4C International Exhibition of Photography  
PID Color General**



**“ROCKPORT KAYAKS”**  
**© DAVID I. FISHER**  
**2018 S4C International Exhibition of Photography**  
**PID Color General**



**“CONVERGENCE”**  
**© STEVEN FRIEDMAN**  
**2018 S4C International Exhibition of Photography**  
**PID Color General**



**“MILKY WAY RISING OVER MONO LAKE”  
© STEVEN FRIEDMAN  
2018 S4C International Exhibition of Photography  
PID Color General**

PID Color Page 98

<https://www.s4c-ex.org/>



**“SPRING BLOOM IN THE CARRIZO”  
© STEVEN FRIEDMAN  
2018 S4C International Exhibition of Photography  
PID Color Theme - Flower(s)**

PID Color Page 99

<https://www.s4c-ex.org/>



**“FLOWER021”**  
**© WEI FU, EPSA**  
**2018 S4C International Exhibition of Photography**  
**PID Color Theme - Flower(s)**



**“WONDERFUL AUTUMN”  
© WALTER GABERTHUEL, MPSA  
2018 S4C International Exhibition of Photography  
PID Color General**



**“MACRO SEWING SUPPLIES 8102”  
© VIKI GAUL, APSA, PPSA  
2018 S4C International Exhibition of Photography  
PID Color General**



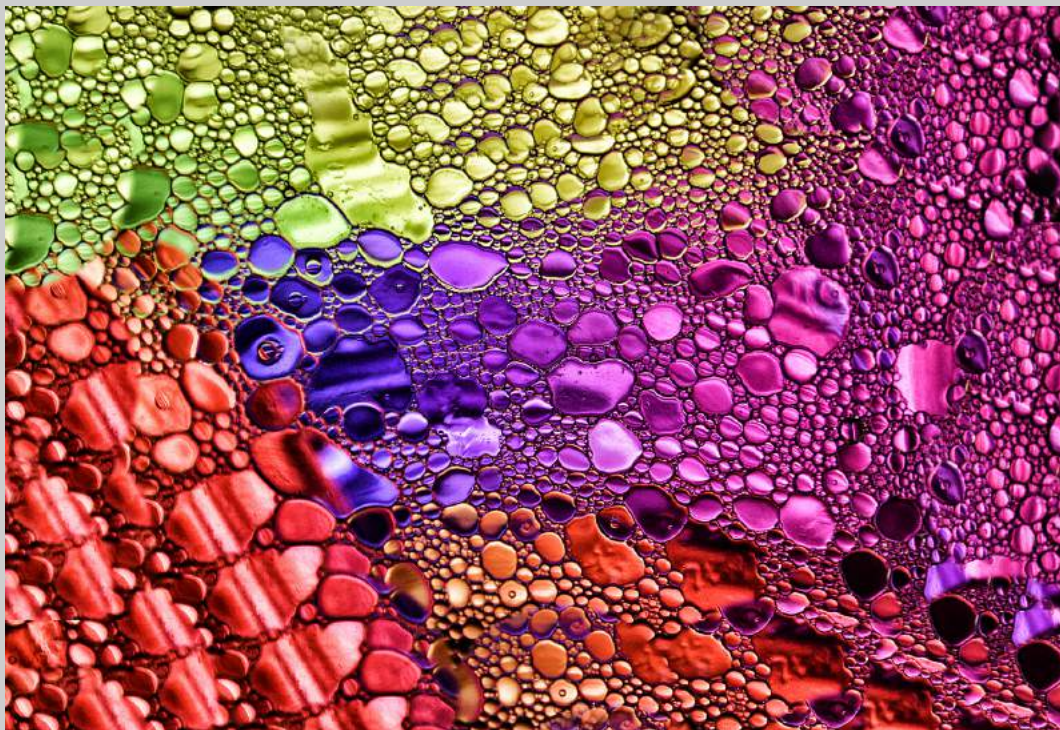
**“THOSE EYES 2220”  
© VIKI GAUL, APSA, PPSA  
2018 S4C International Exhibition of Photography  
PID Color General**



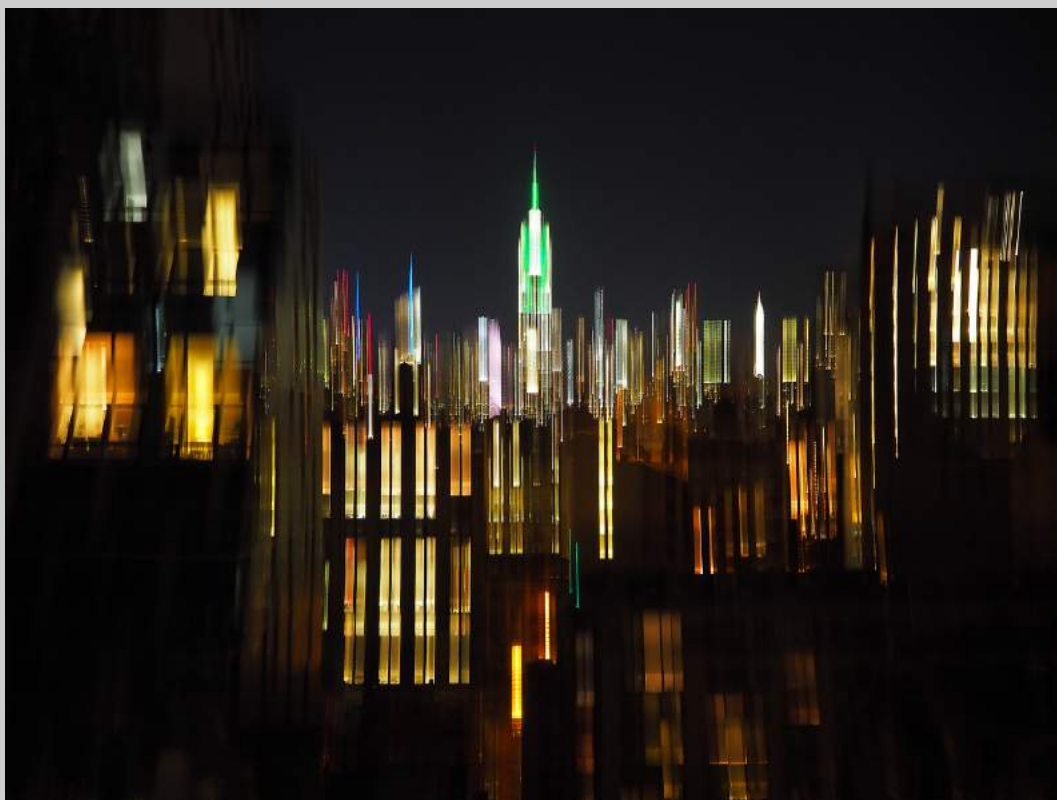
**“THREE PAINTED SLIPPERS 0048”**  
© VIKI GAUL, APSA, PPSA  
2018 S4C International Exhibition of Photography  
PID Color Theme - Flower(s)  
HM

PID Color Page 104

<https://www.s4c-ex.org/>



**“CHAOS 2”**  
**© ARNIE GOLDSTEIN**  
**2018 S4C International Exhibition of Photography**  
**PID Color General**



**“NY NIGHT LIGHTS”  
© RUTH GOLDWASSER  
2018 S4C International Exhibition of Photography  
PID Color General**



**"WHITE ROSE"**  
**© RUTH GOLDWASSER**  
**2018 S4C International Exhibition of Photography**  
**PID Color Theme - Flower(s)**  
**HM**



**“BACK OFF”**  
**© LEAH GRAY**  
**2018 S4C International Exhibition of Photography**  
**PID Color General**



**“HORSE LATITUDE”  
© LEAH GRAY  
2018 S4C International Exhibition of Photography  
PID Color General**



**“SUN RUN”**  
**© LEAH GRAY**  
**2018 S4C International Exhibition of Photography**  
**PID Color General**



**“PITCHER AND PALM”**  
**© TANYA GRIMES-SACKETT**  
**2018 S4C International Exhibition of Photography**  
**PID Color Theme - Flower(s)**

PID Color Page 111

<https://www.s4c-ex.org/>



**“REFLECTED RAINBOW”**  
**© TANYA GRIMES-SACKETT**  
**2018 S4C International Exhibition of Photography**  
**PID Color General**

PID Color Page 112

<https://www.s4c-ex.org/>



**"THE STREAM"**  
**© CRAIG GURNETT**  
**2018 S4C International Exhibition of Photography**  
**PID Color General**



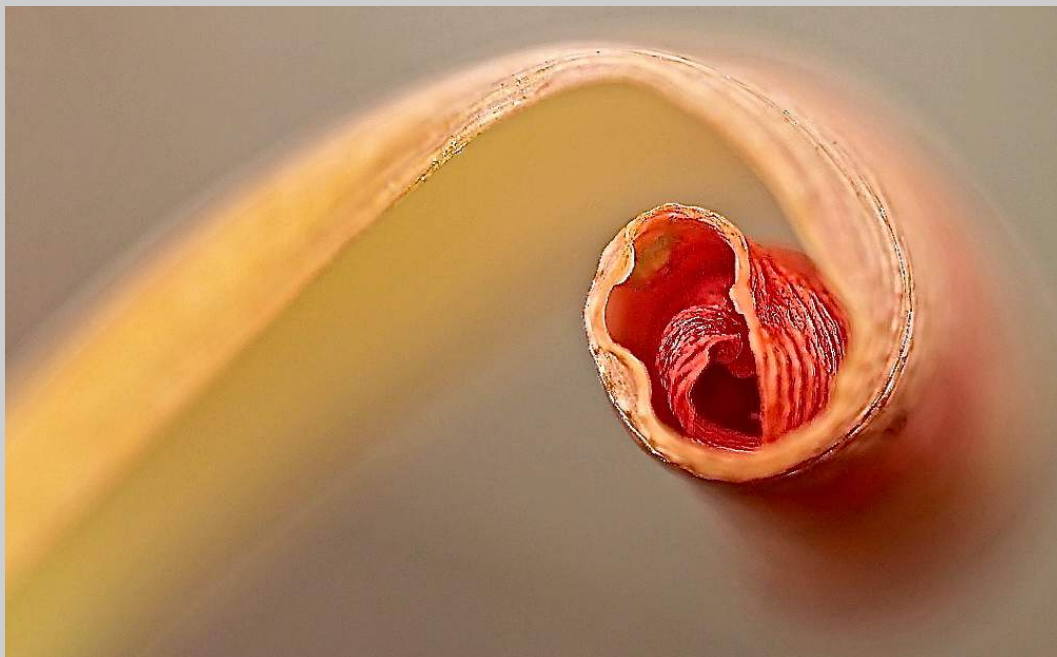
**“FETCHING WATER”**  
**© JANSEN HALIM**  
**2018 S4C International Exhibition of Photography**  
**PID Color General**



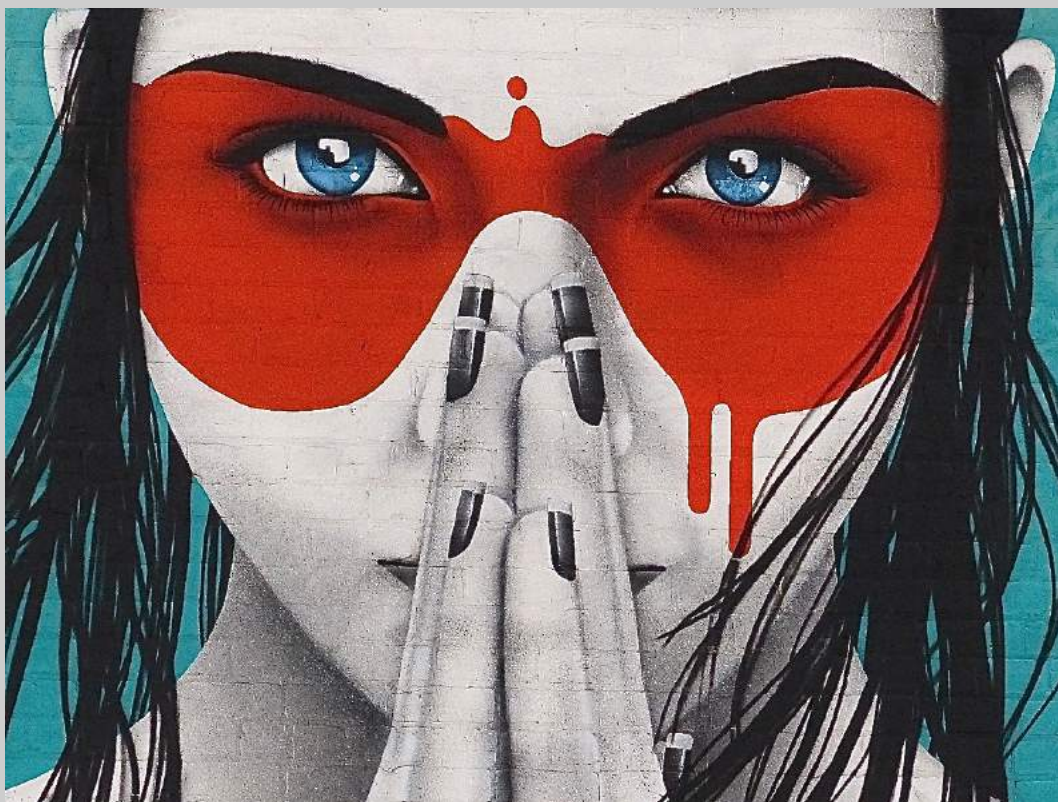
**“HORSE RACE”  
© JANSEN HALIM  
2018 S4C International Exhibition of Photography  
PID Color General**



**"EXOTIC TULIP #7"**  
**© NORMAN HALPERN**  
**2018 S4C International Exhibition of Photography**  
**PID Color Theme - Flower(s)**



**“TULIP FANTASIA”**  
**© NORMAN HALPERN**  
**2018 S4C International Exhibition of Photography**  
**PID Color Theme - Flower(s)**  
**HM**



**“VERGRISS”**  
**© NORMAN HALPERN**  
**2018 S4C International Exhibition of Photography**  
**PID Color General**  
**HM**

PID Color Page 118

<https://www.s4c-ex.org/>



**“CLOCK APOCALYPSE”**  
© JAN HANDMAN  
2018 S4C International Exhibition of Photography  
PID Color General



**“JOURNEY”**  
**© JAN HANDMAN**  
**2018 S4C International Exhibition of Photography**  
**PID Color General**



**“PARADISE REVISITED”  
© JAN HANDMAN  
2018 S4C International Exhibition of Photography  
PID Color Theme - Flower(s)  
HM**

PID Color Page 121

<https://www.s4c-ex.org/>



**"FLIC FLAC, RAIN LOVE"**  
**© RALF HANISCH, MPSA**  
**2018 S4C International Exhibition of Photography**  
**PID Color General**

PID Color Page 122

<https://www.s4c-ex.org/>



**“BOATERCROSS COMPETITORS 2”**  
**© JUSSI HELIMAKI**  
**2018 S4C International Exhibition of Photography**  
**PID Color General**



**"SEA SMOKE IN MIDWINTER"**  
**© JUSSI HELIMAKI**  
**2018 S4C International Exhibition of Photography**  
**PID Color General**  
**HM**



**“SYNCHRONIZED SKATING 2”**  
**© JUSSI HELIMAKI**  
**2018 S4C International Exhibition of Photography**  
**PID Color General**



**“THAI BOXING CHAMPS”  
© ZEE KEK HENG, GMP  
2018 S4C International Exhibition of Photography  
PID Color General**

PID Color Page 126

<https://www.s4c-ex.org/>



**“A SINGLE ROSE”**  
**© HELEN HENRY, QPSA**  
**2018 S4C International Exhibition of Photography**  
**PID Color General**



**“FIREMAN CHASE WITH HIS AXE”**  
**© HELEN HENRY, QPSA**  
**2018 S4C International Exhibition of Photography**  
**PID Color General**  
**HM**



**“HAPPY OLD AGE”  
© TIEN HO ANH  
2018 S4C International Exhibition of Photography  
PID Color General**



**“ON THE FIRE SIDE”  
© TIEN HO ANH  
2018 S4C International Exhibition of Photography  
PID Color General**



**“MAGIC ICE WORLD”**  
**© ALEXANDER HOCHHAUS**  
**2018 S4C International Exhibition of Photography**  
**PID Color General**



**“SENSE OF ETERNITY”**  
**© ALEXANDER HOCHHAUS**  
**2018 S4C International Exhibition of Photography**  
**PID Color General**

PID Color Page 132

<https://www.s4c-ex.org/>



**“BABBLER DUET 2”**  
**© JENNI HORSNELL, GMPA**  
**2018 S4C International Exhibition of Photography**  
**PID Color General**



**“FREE RIDE”**  
**© JENNI HORSNELL, GMPA**  
**2018 S4C International Exhibition of Photography**  
**PID Color General**



**“MOONLIGHT TULIPS”**  
**© JENNI HORSNELL, GMPA**  
**2018 S4C International Exhibition of Photography**  
**PID Color Theme - Flower(s)**  
**HM**

PID Color Page 135

<https://www.s4c-ex.org/>



**“SOFT IRISES”**  
**© JENNI HORSNELL, GMPA**  
**2018 S4C International Exhibition of Photography**  
**PID Color Theme - Flower(s)**  
**Judge’s Choice**

PID Color Page 136

<https://www.s4c-ex.org/>



**“SOFT ROSES 2”**  
**© JENNI HORSNELL, GMPA**  
**2018 S4C International Exhibition of Photography**  
**PID Color Theme - Flower(s)**  
**PSA Best of Show Gold**

PID Color Page 137

<https://www.s4c-ex.org/>



**“THE CROSSING”**  
**© JENNI HORSNELL, GMPA**  
**2018 S4C International Exhibition of Photography**  
**PID Color General**

PID Color Page 138

<https://www.s4c-ex.org/>



**“THE GUARDIAN”**  
**© JENNI HORSNELL, GMP SA**  
**2018 S4C International Exhibition of Photography**  
**PID Color General**

PID Color Page 139

<https://www.s4c-ex.org/>



**“WHITE LILIES”**  
**© JENNI HORSNELL, GMPA**  
**2018 S4C International Exhibition of Photography**  
**PID Color Theme - Flower(s)**  
**S4C Gold**

PID Color Page 140

<https://www.s4c-ex.org/>



**“HORSES LOOKING GRASS IN SNOW STORM”  
© YOUMANS HSIONG  
2018 S4C International Exhibition of Photography  
PID Color General  
HM**

PID Color Page 141

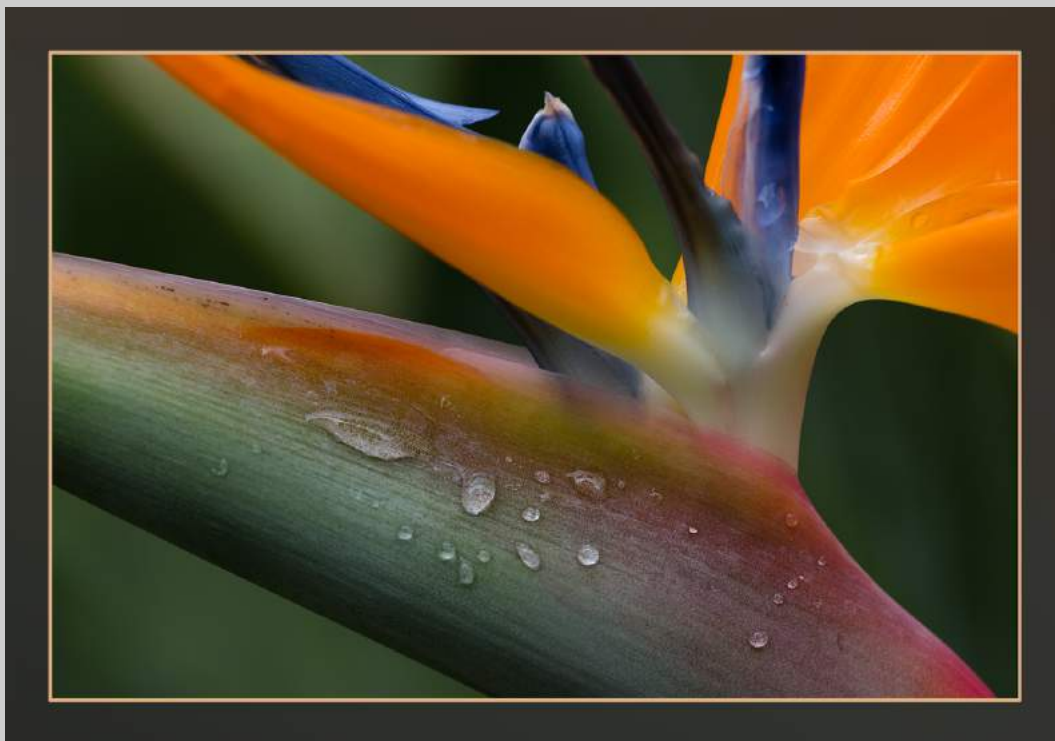
<https://www.s4c-ex.org/>



**“LAKE TAHOE EARLY MORNING”  
© YOUMANS HSIONG  
2018 S4C International Exhibition of Photography  
PID Color General**



**“ALIEN LANDSCAPE”**  
**© GEORGE HUTCHISON**  
**2018 S4C International Exhibition of Photography**  
**PID Color General**



**“BIRD OF PARADISE”**  
**© GEORGE HUTCHISON**  
**2018 S4C International Exhibition of Photography**  
**PID Color General**



**“BATTLING THE WIND”**  
**© BARBARA JENKIN, GMPSA/B**  
**2018 S4C International Exhibition of Photography**  
**PID Color General**



**“CLOWNING AROUND”**  
**© BARBARA JENKIN, GMPSA/B**  
**2018 S4C International Exhibition of Photography**  
**PID Color General**



**“DANDELION ARABESQUE”**  
**© BARBARA JENKIN, GMPSA/B**  
**2018 S4C International Exhibition of Photography**  
**PID Color General**

PID Color Page 147

<https://www.s4c-ex.org/>



**“BALLET WITH DRAPE”**  
**© MALCOLM JENKIN, GMPSA/B**  
**2018 S4C International Exhibition of Photography**  
**PID Color General**

PID Color Page 148

<https://www.s4c-ex.org/>



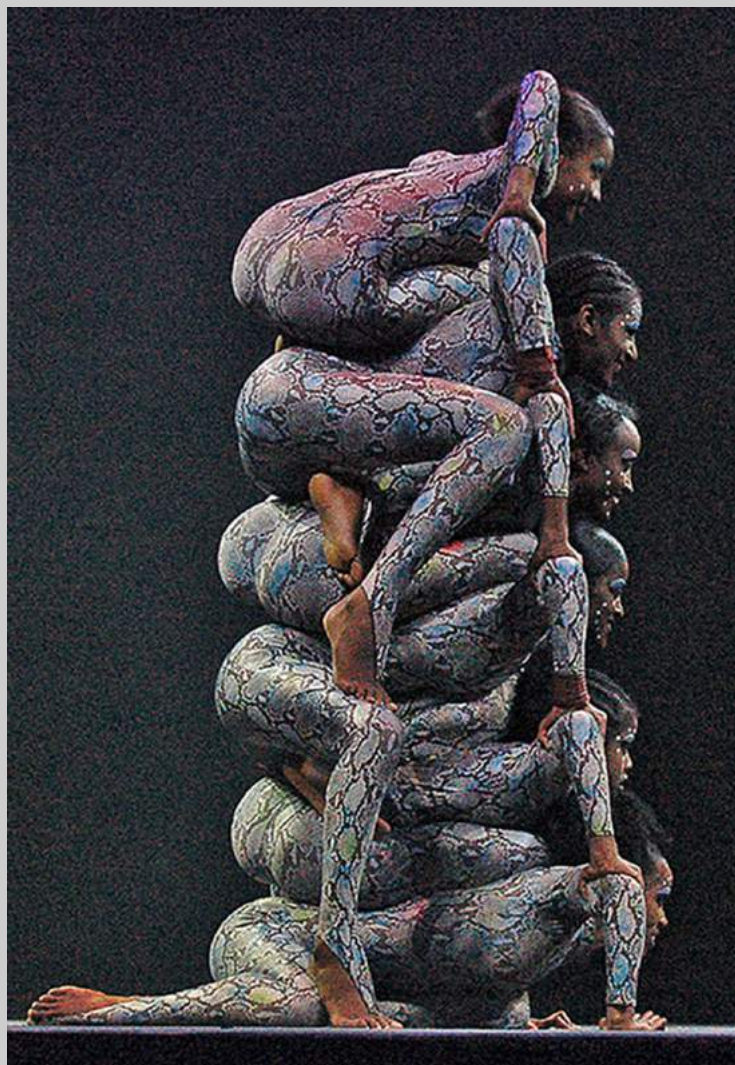
**“FROGS AT PLAY”**  
**© MALCOLM JENKIN, GMPSA/B**  
**2018 S4C International Exhibition of Photography**  
**PID Color General**



**“THINKING VICTORIA”  
© MALCOLM JENKIN, GMPSA/B  
2018 S4C International Exhibition of Photography  
PID Color General**

PID Color Page 150

<https://www.s4c-ex.org/>



**“AFRICANA 2”  
© URS JENZER  
2018 S4C International Exhibition of Photography  
PID Color General**



**“MOHN 2”**  
**© URS JENZER**  
**2018 S4C International Exhibition of Photography**  
**PID Color Theme - Flower(s)**



**“VENEDIG CARNEVALE 11”**  
**© URS JENZER**  
**2018 S4C International Exhibition of Photography**  
**PID Color General**



**“AURORA”**  
**© SHENGFU JIAO**  
**2018 S4C International Exhibition of Photography**  
**PID Color General**



**“CAMEL SHADOW”  
© SHENGFU JIAO  
2018 S4C International Exhibition of Photography  
PID Color General  
HM**

PID Color Page 155

<https://www.s4c-ex.org/>



**“THE TIME IS RIPE”  
© SHENGFU JIAO  
2018 S4C International Exhibition of Photography  
PID Color General**



**“APLOMADO FALCON DISPLAYING”**  
**© IRENE KRAMER**  
**2018 S4C International Exhibition of Photography**  
**PID Color General**



**“CRIMSON BEAUTIES”**  
**© IRENE KRAMER**  
**2018 S4C International Exhibition of Photography**  
**PID Color Theme - Flower(s)**



**“FALL AT THE GRIST MILL ”**  
**© IRENE KRAMER**  
**2018 S4C International Exhibition of Photography**  
**PID Color General**



**“EPIDENDRUM \_ 1”**  
**© MIN-SHENG KU, MPSA**  
**2018 S4C International Exhibition of Photography**  
**PID Color Theme - Flower(s)**

PID Color Page 160

<https://www.s4c-ex.org/>



**“WHITE PHOENIX ORCHID \_ 2”**  
**© MIN-SHENG KU, MPSA**  
**2018 S4C International Exhibition of Photography**  
**PID Color Theme - Flower(s)**

PID Color Page 161

<https://www.s4c-ex.org/>



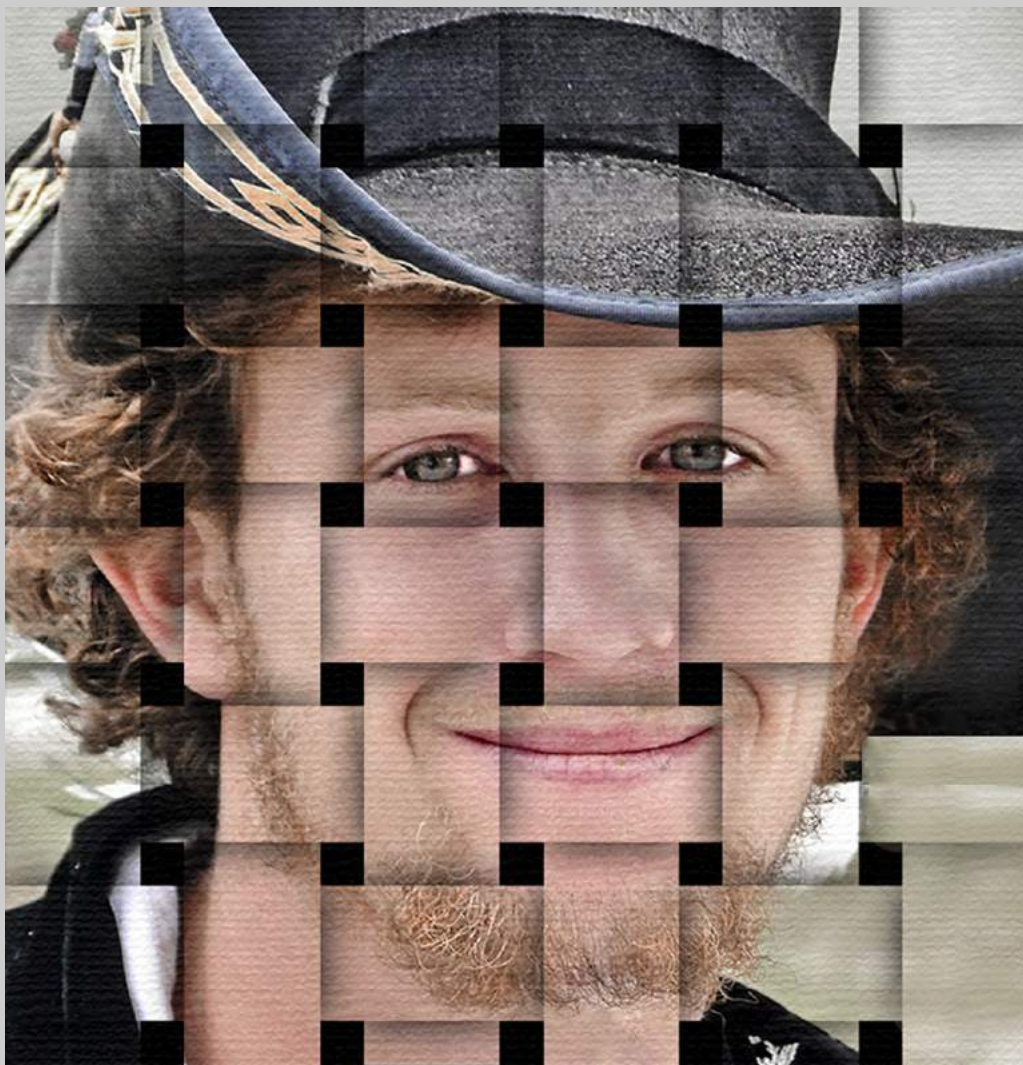
**“ADULT MALE KITE WITH SNAIL”**  
**© BARBARA KUEBLER, APSA, MPSA**  
**2018 S4C International Exhibition of Photography**  
**PID Color General**

PID Color Page 162

<https://www.s4c-ex.org/>



**“HOLLYHOCK”**  
**© BARBARA KUEBLER, APSA, MPSA**  
**2018 S4C International Exhibition of Photography**  
**PID Color Theme - Flower(s)**



**“RED HAired BOY WOVEN”**  
**© BARBARA KUEBLER, APSA, MPSA**  
**2018 S4C International Exhibition of Photography**  
**PID Color General**

PID Color Page 164

<https://www.s4c-ex.org/>



**“AURORA OVER DEVILS TEETH 15”  
© PHILLIP KWAN, GMPSA/G  
2018 S4C International Exhibition of Photography  
PID Color General**

PID Color Page 165

<https://www.s4c-ex.org/>



**“ANEMONE CENTER”  
© DEE LANGEVIN, MPSA  
2018 S4C International Exhibition of Photography  
PID Color Theme - Flower(s)**



**“ANTHURIUM TRIO”**  
**© DEE LANGEVIN, MPSA**  
**2018 S4C International Exhibition of Photography**  
**PID Color Theme - Flower(s)**

PID Color Page 167

<https://www.s4c-ex.org/>



**“DOUBLE PINK”**  
**© DAVID LARONDE, APSA, EPSA**  
**2018 S4C International Exhibition of Photography**  
**PID Color Theme - Flower(s)**  
**HM**

PID Color Page 168

<https://www.s4c-ex.org/>



**“WET FROM THE RAIN”**  
**© DAVID LARONDE, APSA, EPSA**  
**2018 S4C International Exhibition of Photography**  
**PID Color Theme - Flower(s)**

PID Color Page 169

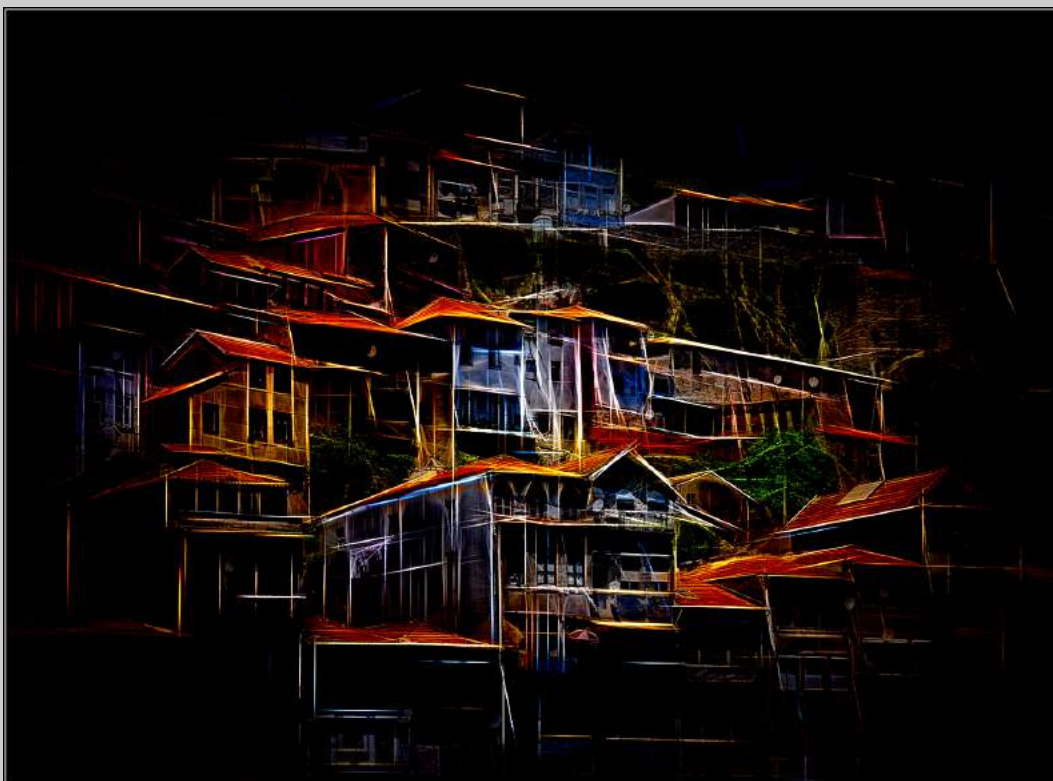
<https://www.s4c-ex.org/>



**“FERNS”**  
**© JOHN LARRY**  
**2018 S4C International Exhibition of Photography**  
**PID Color General**



**“WOLF”**  
**© JOHN LARRY**  
**2018 S4C International Exhibition of Photography**  
**PID Color General**



**“STRUCTURES”**  
**© IAN LEDGARD, GMPSA**  
**2018 S4C International Exhibition of Photography**  
**PID Color General**

PID Color Page 172

<https://www.s4c-ex.org/>



**“AFTER MINOR SAILING”  
© HON-KWONG LEE  
2018 S4C International Exhibition of Photography  
PID Color General  
HM**

PID Color Page 173

<https://www.s4c-ex.org/>



**“WORLD TRAVELERS”**  
**© JAN LEE, FPSA, EPSA**  
**2018 S4C International Exhibition of Photography**  
**PID Color General**



**"A TREE"**  
**© KEN LEE**  
**2018 S4C International Exhibition of Photography**  
**PID Color General**

PID Color Page 175  
<https://www.s4c-ex.org/>



**“LOTU-1”**  
**© KEN LEE**  
**2018 S4C International Exhibition of Photography**  
**PID Color Theme - Flower(s)**



**“MARIA”**  
**© KEN LEE**  
**2018 S4C International Exhibition of Photography**  
**PID Color General**  
**S4C Bronze**

PID Color Page 177

<https://www.s4c-ex.org/>



**“MASK”**  
**© KEN LEE**  
**2018 S4C International Exhibition of Photography**  
**PID Color General**



**“BALLET DANCER”**  
**© WING CHUNG KENNETH LEUNG, EPSA**  
**2018 S4C International Exhibition of Photography**  
**PID Color General**

PID Color Page 179

<https://www.s4c-ex.org/>



**“SUNRISE FISHING”**  
**© WING CHUNG KENNETH LEUNG, EPSA**  
**2018 S4C International Exhibition of Photography**  
**PID Color General**



**“THROUGH THE NET”**  
**© WING CHUNG KENNETH LEUNG, EPSA**  
**2018 S4C International Exhibition of Photography**  
**PID Color General**

PID Color Page 181

<https://www.s4c-ex.org/>



**“TWO HOOPOES”**  
**© WING CHUNG KENNETH LEUNG, EPSA**  
**2018 S4C International Exhibition of Photography**  
**PID Color General**

PID Color Page 182

<https://www.s4c-ex.org/>



**"NANDAL TWILIGHT"**  
**© MAJID LEYLAZ MEHRABADI**  
**2018 S4C International Exhibition of Photography**  
**PID Color General**



**“PINKY LOTUS”  
© WOLFGANG LIN, EPSA  
2018 S4C International Exhibition of Photography  
PID Color Theme - Flower(s)  
HM**

PID Color Page 184

<https://www.s4c-ex.org/>



**“PINKY LOTUS IN BLUE”**  
**© WOLFGANG LIN, EPSA**  
**2018 S4C International Exhibition of Photography**  
**PID Color Theme - Flower(s)**  
**HM**

PID Color Page 185

<https://www.s4c-ex.org/>



**“DAURIAN REDSTART2”**  
**© FENGYING LONG**  
**2018 S4C International Exhibition of Photography**  
**PID Color General**



**“INNER MONGOLIA”  
© FENGYING LONG  
2018 S4C International Exhibition of Photography  
PID Color General**



**“WHEAT FURROWS”**  
**© FRED LUHMAN, EPSA**  
**2018 S4C International Exhibition of Photography**  
**PID Color General**



**“KAMCHATKA11”**  
**© YAN LUO**  
**2018 S4C International Exhibition of Photography**  
**PID Color General**



**“NATIONAL TRAIN DAY 10”**  
**© YAN LUO**  
**2018 S4C International Exhibition of Photography**  
**PID Color General**



**“XINJIANG TAJIKS 15”  
© YAN LUO  
2018 S4C International Exhibition of Photography  
PID Color General**



**“PEAR AND GRAPES”  
© CINDY LYNCH  
2018 S4C International Exhibition of Photography  
PID Color General**



**“PENCILS AND PLANS”**  
© CINDY LYNCH  
2018 S4C International Exhibition of Photography  
PID Color General



**“WATER LILIES 1”  
© CINDY LYNCH  
2018 S4C International Exhibition of Photography  
PID Color General**



**“1 HOT MOMMA IN JEANS AND SHIRT”  
© JAMES MAHONEY, APSA, EPSA  
2018 S4C International Exhibition of Photography  
PID Color General**

PID Color Page 195

<https://www.s4c-ex.org/>



**“DEDE IN JEANS”**  
**© JAMES MAHONEY, APSA, EPSA**  
**2018 S4C International Exhibition of Photography**  
**PID Color General**



**“KATHERINE AND FUR COLLAR”**  
**© JAMES MAHONEY, APSA, EPSA**  
**2018 S4C International Exhibition of Photography**  
**PID Color General**

PID Color Page 197

<https://www.s4c-ex.org/>



**“SEEING DOUBLE”**  
**© ROSALIE MAHONEY**  
**2018 S4C International Exhibition of Photography**  
**PID Color General**



**“VICTORIAH 145”  
© DAVID M MASLIN, EPSA  
2018 S4C International Exhibition of Photography  
PID Color General  
Judge’s Choice**



**"I AM HERE"**  
**© THI HA MAUNG**  
**2018 S4C International Exhibition of Photography**  
**PID Color General**



**“PREPARATION FOR NET”**  
**© THI HA MAUNG**  
**2018 S4C International Exhibition of Photography**  
**PID Color General**



**“BLUE INK WELLS”  
© DEE MCMILLAN  
2018 S4C International Exhibition of Photography  
PID Color General  
HM**



**“CHERRY BLOSSOMS TWO”**  
**© DEE MCMILLAN**  
**2018 S4C International Exhibition of Photography**  
**PID Color Theme - Flower(s)**

PID Color Page 203

<https://www.s4c-ex.org/>



**“COOL ICELAND POPPY”  
© DEE MCMILLAN  
2018 S4C International Exhibition of Photography  
PID Color Theme - Flower(s)  
Judge’s Choice**

PID Color Page 204

<https://www.s4c-ex.org/>



**“ORANGE ZINNIA IN GLASS”**  
**© DEE MCMILLAN**  
**2018 S4C International Exhibition of Photography**  
**PID Color Theme - Flower(s)**



**“VASE”**  
**© DEE MCMILLAN**  
**2018 S4C International Exhibition of Photography**  
**PID Color General**



**“MATING PLUMAGE”**  
**© DAVID MEISENHEIMER, FPSA, GMPA**  
**2018 S4C International Exhibition of Photography**  
**PID Color General**



**“OSPREY FAMILY”**  
**© DAVID MEISENHEIMER, FPSA, GMPA**  
**2018 S4C International Exhibition of Photography**  
**PID Color General**

PID Color Page 208

<https://www.s4c-ex.org/>



**“PORTLAND HEAD AND SHIP”  
© DAVID MEISENHEIMER, FPSA, GMPSA  
2018 S4C International Exhibition of Photography  
PID Color General**

PID Color Page 209

<https://www.s4c-ex.org/>



**“LOTUS FLOWER ON BLACK”  
© HOLLY MOORE, PPSA  
2018 S4C International Exhibition of Photography  
PID Color Theme - Flower(s)**

PID Color Page 210

<https://www.s4c-ex.org/>



**“SELFIE WITH ROYALTY”**  
**© HOLLY MOORE, PPSA**  
**2018 S4C International Exhibition of Photography**  
**PID Color General**

PID Color Page 211

<https://www.s4c-ex.org/>



**“DEB 2 HUILES”**  
**© ALAIN MORATA, GPUCR2**  
**2018 S4C International Exhibition of Photography**  
**PID Color General**  
**Judge’s Choice**

PID Color Page 212

<https://www.s4c-ex.org/>



**“RAINY DAY REFLECTIONS”  
© PETER MORGAN  
2018 S4C International Exhibition of Photography  
PID Color General**



**“FLOWER 142”**  
**© IRA NEMEROFF, MPSA**  
**2018 S4C International Exhibition of Photography**  
**PID Color Theme - Flower(s)**

PID Color Page 214

<https://www.s4c-ex.org/>



**“ORCHIDS 66”**  
**© IRA NEMEROFF, MPSA**  
**2018 S4C International Exhibition of Photography**  
**PID Color Theme - Flower(s)**



**“ORCHIDS 79”**  
**© IRA NEMEROFF, MPSA**  
**2018 S4C International Exhibition of Photography**  
**PID Color Theme - Flower(s)**



**"SELBY 70"**  
**© IRA NEMEROFF, MPSA**  
**2018 S4C International Exhibition of Photography**  
**PID Color Theme - Flower(s)**



**“CLASSIC BALLERINA”**  
**© SAU FONG NEO**  
**2018 S4C International Exhibition of Photography**  
**PID Color General**  
**S4C Bronze**

PID Color Page 218

<https://www.s4c-ex.org/>



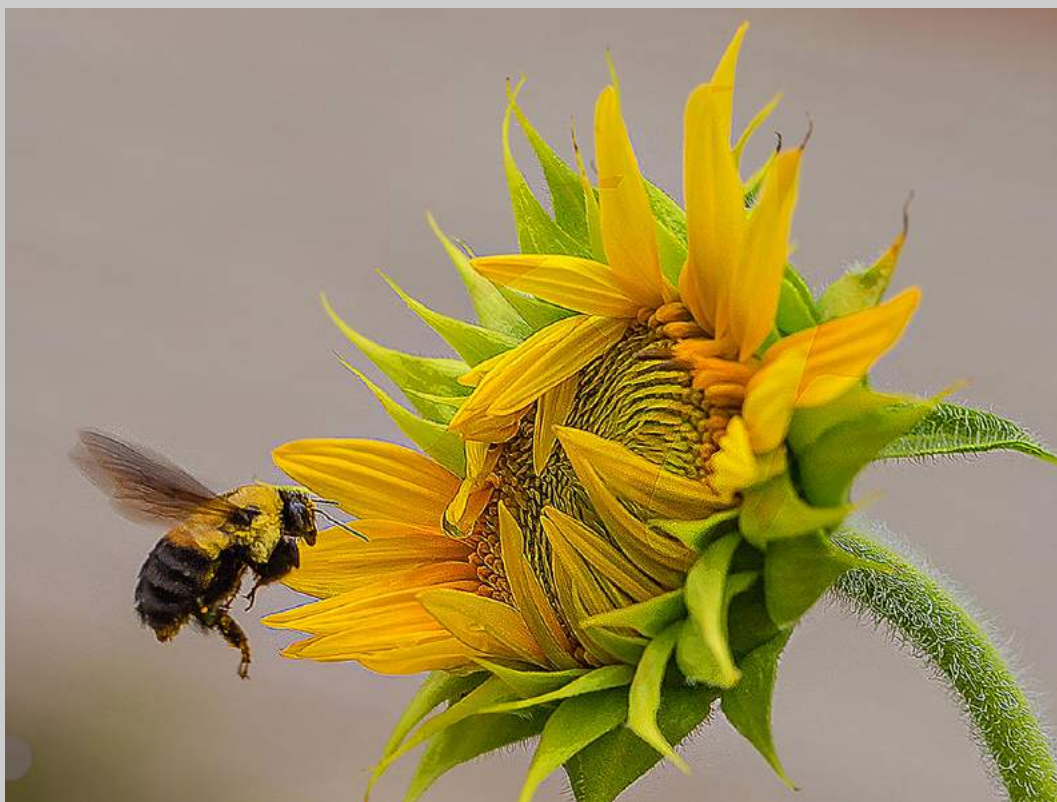
**“HANDMADE BASKET”**  
**© SAU FONG NEO**  
**2018 S4C International Exhibition of Photography**  
**PID Color General**

PID Color Page 219

<https://www.s4c-ex.org/>



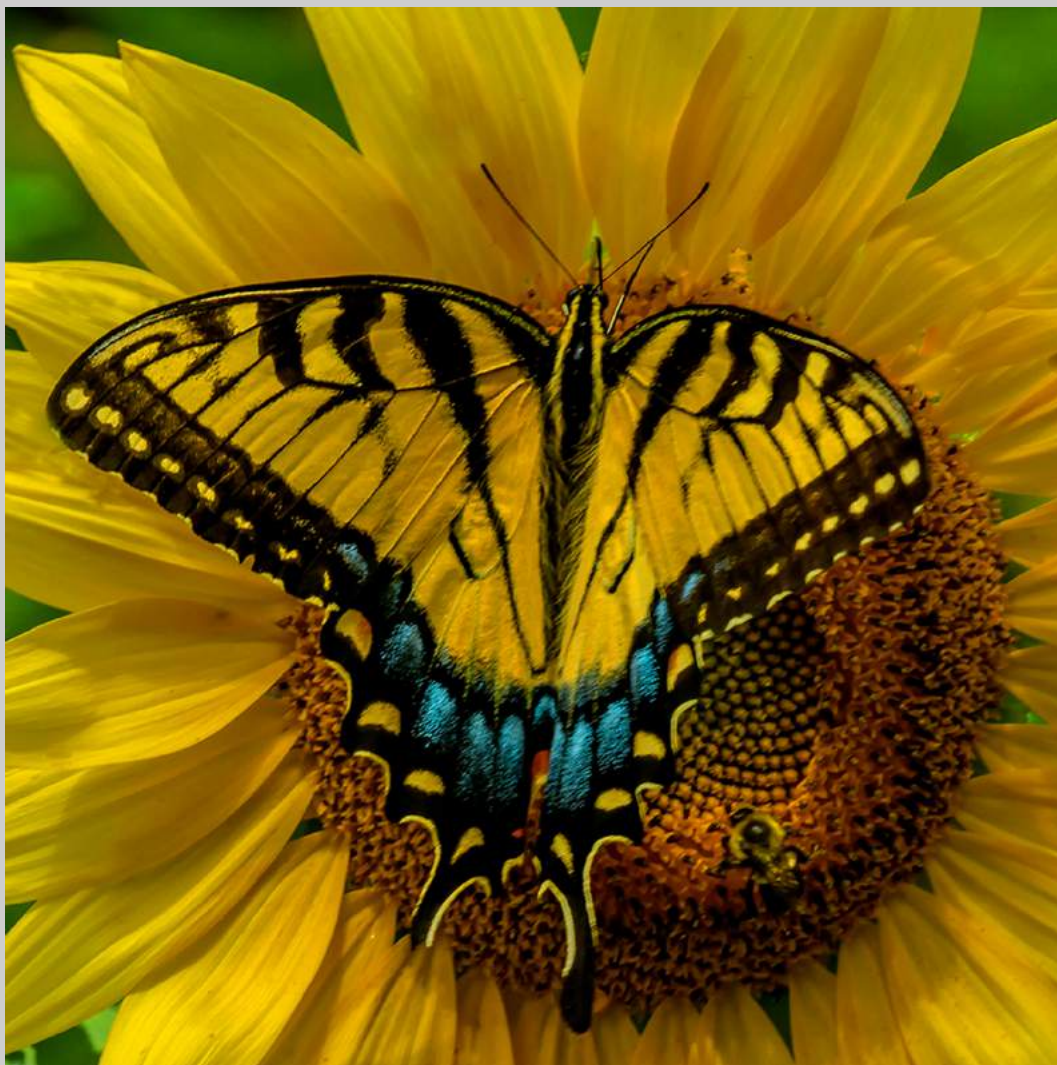
**“YOUNG HEROINE”  
© SAU FONG NEO  
2018 S4C International Exhibition of Photography  
PID Color General**



**“BEE AND SUNFLOWER”**  
**© HUONG HOA NGUYEN**  
**2018 S4C International Exhibition of Photography**  
**PID Color Theme - Flower(s)**

PID Color Page 221

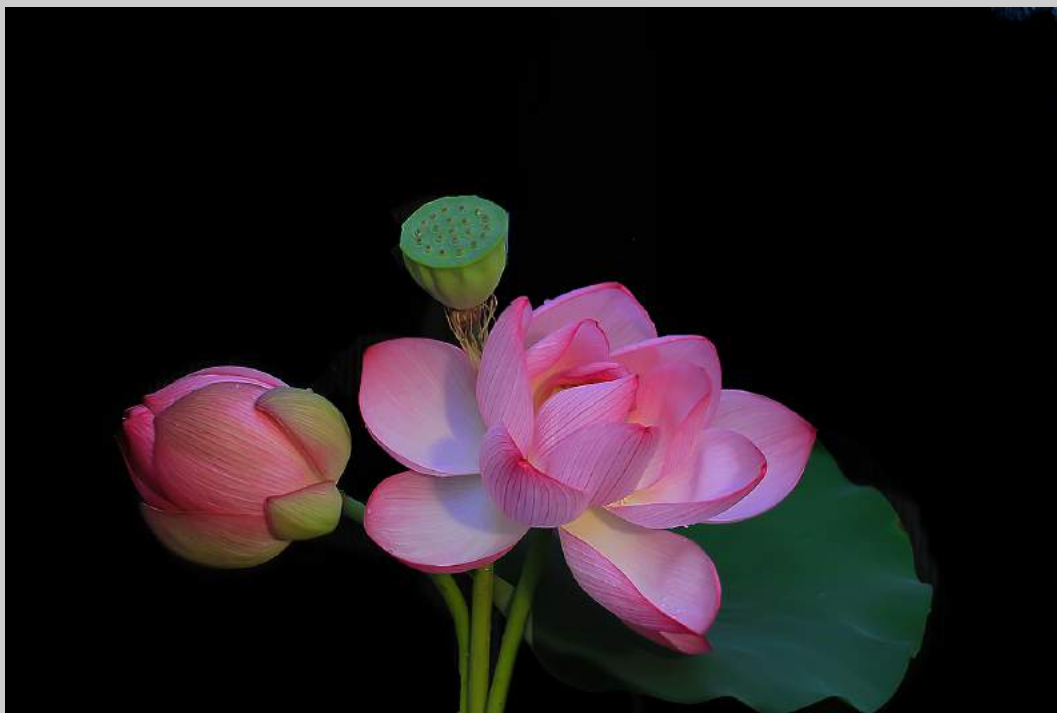
<https://www.s4c-ex.org/>



**“BUTTERFLY AND SUNFLOWER 04”  
© HUONG HOA NGUYEN  
2018 S4C International Exhibition of Photography  
PID Color General**

PID Color Page 222

<https://www.s4c-ex.org/>



**“LOTUS BLOSSOMS TIME”  
© HUONG HOA NGUYEN  
2018 S4C International Exhibition of Photography  
PID Color Theme - Flower(s)**

PID Color Page 223

<https://www.s4c-ex.org/>



**“POPPY AFTER RAIN”**  
**© HUONG HOA NGUYEN**  
**2018 S4C International Exhibition of Photography**  
**PID Color Theme - Flower(s)**

PID Color Page 224

<https://www.s4c-ex.org/>



**“HARBOUR BRIDGE”**  
**© FERIANA OHARI**  
**2018 S4C International Exhibition of Photography**  
**PID Color General**

PID Color Page 225

<https://www.s4c-ex.org/>



**“GRANDEUR”**  
**© DONNA OSBORNE**  
**2018 S4C International Exhibition of Photography**  
**PID Color General**



**“BASKET OF ROSES”**  
**© KRISTINA OSWALD**  
**2018 S4C International Exhibition of Photography**  
**PID Color Theme - Flower(s)**



**“MUSIC FUR ELISE”**  
**© KRISTINA OSWALD**  
**2018 S4C International Exhibition of Photography**  
**PID Color General**



**“PINK COSMOS IN BASKET”  
© KRISTINA OSWALD  
2018 S4C International Exhibition of Photography  
PID Color Theme - Flower(s)**

PID Color Page 229

<https://www.s4c-ex.org/>



**“ROMANCE”**  
**© KRISTINA OSWALD**  
**2018 S4C International Exhibition of Photography**  
**PID Color Theme - Flower(s)**



**“SWEETHEART ROSES”**  
**© KRISTINA OSWALD**  
**2018 S4C International Exhibition of Photography**  
**PID Color Theme - Flower(s)**  
**HM**

PID Color Page 231

<https://www.s4c-ex.org/>



**“BIRDSFOOT TREFOIL”**  
**© RAY PAPULIS**  
**2018 S4C International Exhibition of Photography**  
**PID Color Theme - Flower(s)**



**“BROADSIDE IN THE BREAKERS”**  
**© ELIZABETH PASSUELLO**  
**2018 S4C International Exhibition of Photography**  
**PID Color General**

PID Color Page 233

<https://www.s4c-ex.org/>



**“THE DANCE”**  
**© ELIZABETH PASSUELLO**  
**2018 S4C International Exhibition of Photography**  
**PID Color General**

PID Color Page 234

<https://www.s4c-ex.org/>



**“BEAUTIFUL IRIS”**  
**© DIANE PECK**  
**2018 S4C International Exhibition of Photography**  
**PID Color Theme - Flower(s)**



**“BLUE DOOR AND BRICKS”**  
© DIANE PECK  
2018 S4C International Exhibition of Photography  
PID Color General



**“ISOLATED WATER LILY”  
© DIANE PECK  
2018 S4C International Exhibition of Photography  
PID Color Theme - Flower(s)**

PID Color Page 237

<https://www.s4c-ex.org/>



**“GENTIANA PANNONICA”**  
**© ALBERT PEER**  
**2018 S4C International Exhibition of Photography**  
**PID Color Theme - Flower(s)**

PID Color Page 238

<https://www.s4c-ex.org/>



**“WILLOW GENTIAN”**  
**© ALBERT PEER**  
**2018 S4C International Exhibition of Photography**  
**PID Color Theme - Flower(s)**



**“SNOWBIRDS2”**  
**© MICHELE PETERSON, QPSA**  
**2018 S4C International Exhibition of Photography**  
**PID Color General**



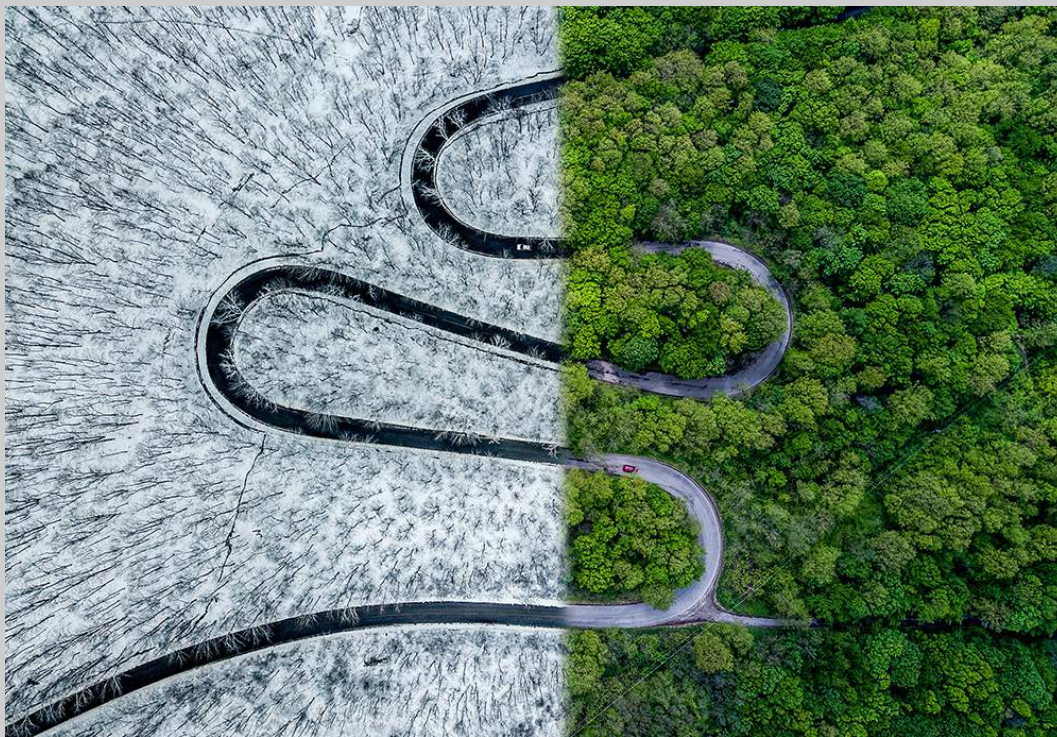
**“WARPED TULIP”**  
**© MICHELE PETERSON, QPSA**  
**2018 S4C International Exhibition of Photography**  
**PID Color Theme - Flower(s)**



**“HUMMINGBIRD ON FURRY HELICONIA”  
© NATALYA PLUZHNIKOV, PPSA  
2018 S4C International Exhibition of Photography  
PID Color General**

PID Color Page 242

<https://www.s4c-ex.org/>



**“WEATHER SNAKE”**  
© OVI D POP  
2018 S4C International Exhibition of Photography  
PID Color General



**“CACTUS FLOWER”**  
**© SHARON PRISLIPSKY**  
**2018 S4C International Exhibition of Photography**  
**PID Color Theme - Flower(s)**

PID Color Page 244

<https://www.s4c-ex.org/>



**“EVENING AT PICTURED ROCKS”  
© SHARON PRISLIPSKY  
2018 S4C International Exhibition of Photography  
PID Color General  
PSA Best of Show Gold**

PID Color Page 245

<https://www.s4c-ex.org/>



**“STAR OF BETHLEHEM”**  
**© SHARON PRISLIPSKY**  
**2018 S4C International Exhibition of Photography**  
**PID Color Theme - Flower(s)**  
**S4C Silver**

PID Color Page 246

<https://www.s4c-ex.org/>



**“THE OLD MILL IN SPRINGTIME”**  
**© SHARON PRISLIPSKY**  
**2018 S4C International Exhibition of Photography**  
**PID Color General**



**“WATER GARDEN NO. 6”  
© SHARON PRISLIPSKY  
2018 S4C International Exhibition of Photography  
PID Color Theme - Flower(s)**

PID Color Page 248

<https://www.s4c-ex.org/>



**“WHEN THE DEEP PURPLE FALLS”  
© SHARON PRISLIPSKY  
2018 S4C International Exhibition of Photography  
PID Color General  
HM**

PID Color Page 249

<https://www.s4c-ex.org/>



**“WINDING ROAD”**  
**© SHARON PRISLIPSKY**  
**2018 S4C International Exhibition of Photography**  
**PID Color General**

PID Color Page 250

<https://www.s4c-ex.org/>



**“AKA JAMES HARRISON”  
© NOEL RITCHIE  
2018 S4C International Exhibition of Photography  
PID Color General**



**“CHRYSANTHEMUM ORANGE”**  
**© NOEL RITCHIE**  
**2018 S4C International Exhibition of Photography**  
**PID Color Theme - Flower(s)**



**“CORMORANT FISHERMAN”**  
**© NOEL RITCHIE**  
**2018 S4C International Exhibition of Photography**  
**PID Color General**

PID Color Page 253

<https://www.s4c-ex.org/>



**“NAUTILUS REFLECTION”**  
**© TRUDY RUNYAN, EPSA**  
**2018 S4C International Exhibition of Photography**  
**PID Color General**  
**HM**

PID Color Page 254

<https://www.s4c-ex.org/>



**“PRETTY PEARLS”**  
**© TRUDY RUNYAN, EPSA**  
**2018 S4C International Exhibition of Photography**  
**PID Color General**  
**HM**



**“TULIP OPENING”**  
**© TRUDY RUNYAN, EPSA**  
**2018 S4C International Exhibition of Photography**  
**PID Color Theme - Flower(s)**



**“BLUE-EYED DARNER ON STALK”**  
**© DENISE SALDANA**  
**2018 S4C International Exhibition of Photography**  
**PID Color General**

PID Color Page 257

<https://www.s4c-ex.org/>



**“GLOWING TULIP”**  
**© DENISE SALDANA**  
**2018 S4C International Exhibition of Photography**  
**PID Color Theme - Flower(s)**



**“HALF OPEN SUNFLOWERS”**  
**© DENISE SALDANA**  
**2018 S4C International Exhibition of Photography**  
**PID Color Theme - Flower(s)**  
**S4C Bronze**

PID Color Page 259

<https://www.s4c-ex.org/>



**“PAIR OF RED DRAGONFLIES”**  
**© DENISE SALDANA**  
**2018 S4C International Exhibition of Photography**  
**PID Color General**



**“STALKING TIGER FROG”**  
**© DENISE SALDANA**  
**2018 S4C International Exhibition of Photography**  
**PID Color General**

PID Color Page 261

<https://www.s4c-ex.org/>



**“RASE MOTTES”**  
**© GUY B. SAMOYVAULT, APSA, GMPSA**  
**2018 S4C International Exhibition of Photography**  
**PID Color General**

PID Color Page 262

<https://www.s4c-ex.org/>



**"2 MILK CANS"**  
© J.R. SCHNELZER, APSA, PPSA  
2018 S4C International Exhibition of Photography  
PID Color General



**“BARN & MOON”**  
**© J.R. SCHNELZER, APSA, PPSA**  
**2018 S4C International Exhibition of Photography**  
**PID Color General**

PID Color Page 264

<https://www.s4c-ex.org/>



**“BENT ASTER”**  
**© J.R. SCHNELZER, APSA, PPSA**  
**2018 S4C International Exhibition of Photography**  
**PID Color Theme - Flower(s)**  
**HM**

PID Color Page 265

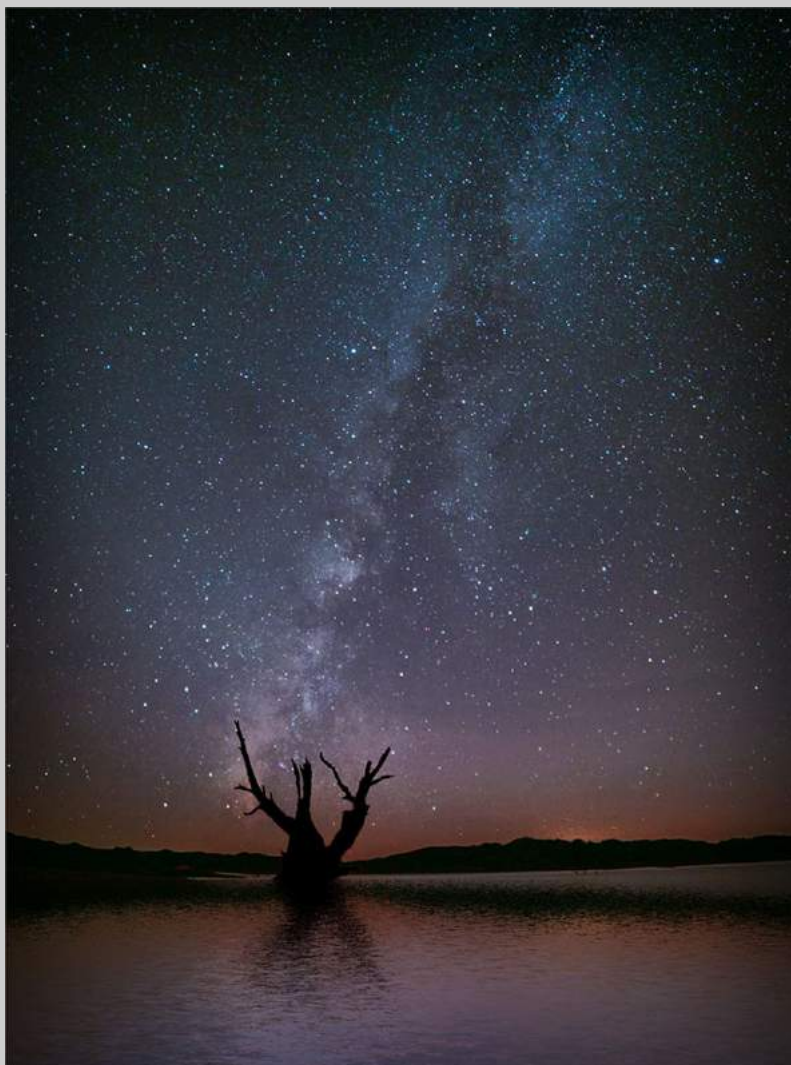
<https://www.s4c-ex.org/>



**“PUMPKIN FIELD”**  
**© J.R. SCHNELZER, APSA, PPSA**  
**2018 S4C International Exhibition of Photography**  
**PID Color General**



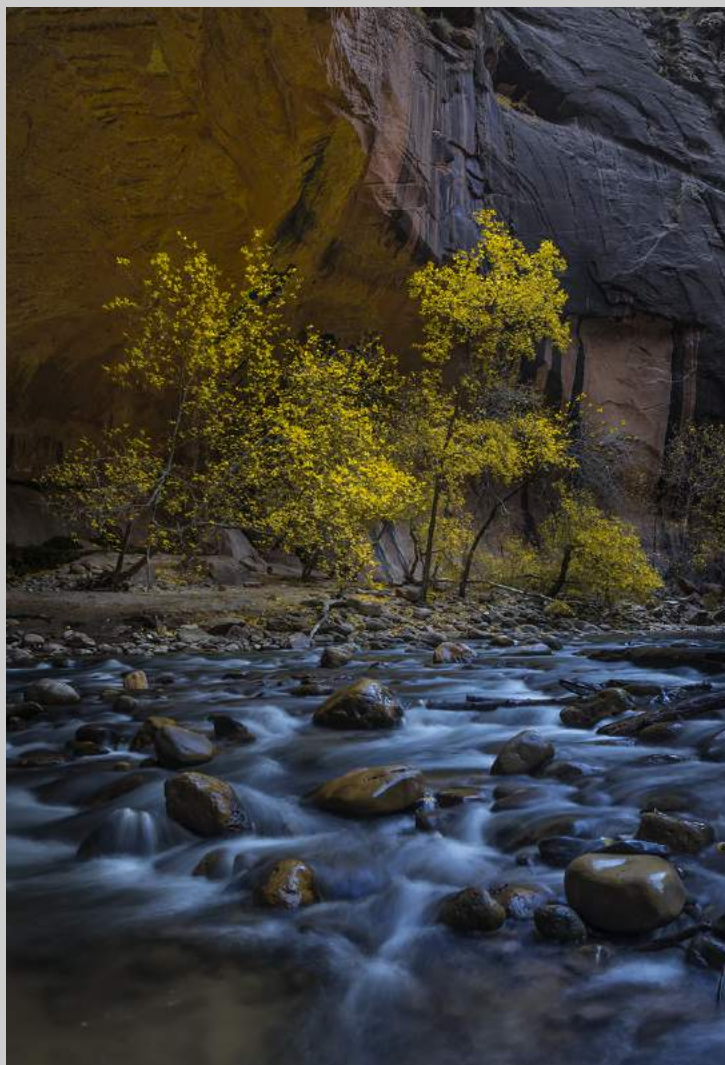
**“A GRAND HEAD DRESS”**  
**© ELLA SCHREIBER**  
**2018 S4C International Exhibition of Photography**  
**PID Color General**



**“ALAMO LAKE-MILKY WAY”  
© ELLA SCHREIBER  
2018 S4C International Exhibition of Photography  
PID Color General**

PID Color Page 268

<https://www.s4c-ex.org/>



**“ZION NARROWS AND YELLOW TREE”**  
**© PETER SCIFRES**  
**2018 S4C International Exhibition of Photography**  
**PID Color General**

PID Color Page 269

<https://www.s4c-ex.org/>



**“CYMBIDIUM ORCHID 1602”**  
**© JEANNE SCOTT**  
**2018 S4C International Exhibition of Photography**  
**PID Color General**



**“MILKY WAY OVER BUCKLEY POND”  
© JEANNE SCOTT  
2018 S4C International Exhibition of Photography  
PID Color General**



**“MILKY WAY WITH YUCCAS B7407”  
© JEANNE SCOTT  
2018 S4C International Exhibition of Photography  
PID Color General**



**“YOSEMITE MILKY WAY B7207”  
© JEANNE SCOTT  
2018 S4C International Exhibition of Photography  
PID Color General**



**“BEAUTY OF STAMEN - 2”**  
**© AMIN SHAIKH, FPSA, GMPSA**  
**2018 S4C International Exhibition of Photography**  
**PID Color Theme - Flower(s)**

PID Color Page 274

<https://www.s4c-ex.org/>



**“GOLDEN LIGHT ON ARCHES”**  
**© AMIN SHAIKH, FPSA, GMPSA**  
**2018 S4C International Exhibition of Photography**  
**PID Color General**

PID Color Page 275

<https://www.s4c-ex.org/>



**“INNER BEAUTY OF ORCHID - 2”  
© AMIN SHAIKH, FPSA, GMPSA  
2018 S4C International Exhibition of Photography  
PID Color Theme - Flower(s)**

PID Color Page 276

<https://www.s4c-ex.org/>



**“NYC IN MOON LIGHT”  
© AMIN SHAIKH, FPSA, GMPSA  
2018 S4C International Exhibition of Photography  
PID Color General**

PID Color Page 277

<https://www.s4c-ex.org/>



**“WINNER”**  
**© AMIN SHAIKH, FPSA, GMPSA**  
**2018 S4C International Exhibition of Photography**  
**PID Color General**



**“REFLECTION AFTER RAIN”**  
**© SHAHID SHARAFUDDIN, PPSA**  
**2018 S4C International Exhibition of Photography**  
**PID Color General**

PID Color Page 279

<https://www.s4c-ex.org/>



**“AFTERLIGHT”  
© ROY SMITH  
2018 S4C International Exhibition of Photography  
PID Color General**

PID Color Page 280  
<https://www.s4c-ex.org/>



**“CUMBRIAN STEAM”  
© ROY SMITH  
2018 S4C International Exhibition of Photography  
PID Color General**



**“DANDELION SEED HEAD”**  
**© ROY SMITH**  
**2018 S4C International Exhibition of Photography**  
**PID Color Theme - Flower(s)**

PID Color Page 282

<https://www.s4c-ex.org/>



**“EXPLOSION”**  
**© ROY SMITH**  
**2018 S4C International Exhibition of Photography**  
**PID Color Theme - Flower(s)**  
**HM**



**“PULSATILLA”**  
**© ROY SMITH**  
**2018 S4C International Exhibition of Photography**  
**PID Color Theme - Flower(s)**  
**S4C Bronze**

PID Color Page 284

<https://www.s4c-ex.org/>



**“STORM WAVE”**  
**© ROY SMITH**  
**2018 S4C International Exhibition of Photography**  
**PID Color General**



**“BONGELINE 7109”**  
**© JAN-THOMAS STAKE, GMPSA**  
**2018 S4C International Exhibition of Photography**  
**PID Color General**  
**S4C Silver**

PID Color Page 286

<https://www.s4c-ex.org/>



**“KAJSA 9533”**  
**© JAN-THOMAS STAKE, GMPSA**  
**2018 S4C International Exhibition of Photography**  
**PID Color General**



**“KAJSA BROWN NECKLACE”  
© JAN-THOMAS STAKE, GMP  
2018 S4C International Exhibition of Photography  
PID Color General  
S4C Silver**

PID Color Page 288

<https://www.s4c-ex.org/>



**“ME ALF AND TEDDY”  
© JAN-THOMAS STAKE, GMPSA  
2018 S4C International Exhibition of Photography  
PID Color General**

PID Color Page 289

<https://www.s4c-ex.org/>



**“HARSH WINTER IN SCOTLAND”  
© PETER STANFORD  
2018 S4C International Exhibition of Photography  
PID Color General  
HM**



**“THE GUNNERS”**  
**© PETER STANFORD**  
**2018 S4C International Exhibition of Photography**  
**PID Color General**



**“CORMORANT ON ICEBERG”**  
**© GAIL STEWART**  
**2018 S4C International Exhibition of Photography**  
**PID Color General**

PID Color Page 292

<https://www.s4c-ex.org/>



**“HUNTING - ALASKA”  
© ALEXEY SULOEV, PPSA  
2018 S4C International Exhibition of Photography  
PID Color General**



**“AUTUMN IN THE MOUNTAIN VILLAGE”**  
**© JIJUN SUN**  
**2018 S4C International Exhibition of Photography**  
**PID Color General**



**“COMPANY”**  
**© JIJUN SUN**  
**2018 S4C International Exhibition of Photography**  
**PID Color Theme - Flower(s)**  
**S4C Silver**

PID Color Page 295

<https://www.s4c-ex.org/>



**“YOUNG FUN”**  
**© JOAO TABORDA, PPSA**  
**2018 S4C International Exhibition of Photography**  
**PID Color General**



**“PHATTHALUNG FISHERMAN”**  
**© LEE ENG TAN**  
**2018 S4C International Exhibition of Photography**  
**PID Color General**

PID Color Page 297

<https://www.s4c-ex.org/>



**“VIETNAM SAND DUNES”  
© LEE ENG TAN  
2018 S4C International Exhibition of Photography  
PID Color General**

PID Color Page 298  
<https://www.s4c-ex.org/>



**“VIETNAMESE FISHMONGER”**  
**© LEE ENG TAN**  
**2018 S4C International Exhibition of Photography**  
**PID Color General**  
**HM**

PID Color Page 299

<https://www.s4c-ex.org/>



**“FRITZ THE FLY”**  
**© PETER TEUSCHEL, PPSA**  
**2018 S4C International Exhibition of Photography**  
**PID Color General**



**“GRAY”**  
**© PETER TEUSCHEL, PPSA**  
**2018 S4C International Exhibition of Photography**  
**PID Color General**



**“LONELY”**  
**© PETER TEUSCHEL, PPSA**  
**2018 S4C International Exhibition of Photography**  
**PID Color Theme - Flower(s)**

PID Color Page 302

<https://www.s4c-ex.org/>



**“RHODODENDRON”**  
**© PETER TEUSCHEL, PPSA**  
**2018 S4C International Exhibition of Photography**  
**PID Color Theme - Flower(s)**



**“FEEDING AT PENSTEMON”**  
**© LYNN THOMPSON, FPSA, MPSA**  
**2018 S4C International Exhibition of Photography**  
**PID Color General**

PID Color Page 304

<https://www.s4c-ex.org/>



**“LUPINS IN BLOOM, ICELAND”  
© LYNN THOMPSON, FPSA, MPSA  
2018 S4C International Exhibition of Photography  
PID Color Theme - Flower(s)  
S4C Bronze**

PID Color Page 305

<https://www.s4c-ex.org/>



**“AZURE STRIKE 1A”**  
**© JIM THOMSON, FRPS**  
**2018 S4C International Exhibition of Photography**  
**PID Color General**  
**HM**

PID Color Page 306

<https://www.s4c-ex.org/>



**“OSPREY 1A”  
© JIM THOMSON, FRPS  
2018 S4C International Exhibition of Photography  
PID Color General**



**“LINGERING CLOUDS OVER TERRACES”**  
© NGOCAN TO  
2018 S4C International Exhibition of Photography  
PID Color General



**“PAPHIOPEDILUM ORCHID 1319”**  
**© SA KIM TRAN**  
**2018 S4C International Exhibition of Photography**  
**PID Color Theme - Flower(s)**



**“WILD FLOWERS 972”  
© SA KIM TRAN  
2018 S4C International Exhibition of Photography  
PID Color General**



**“PEACOCK DANCE”**  
**© WAI MAN TSIM, MPSA**  
**2018 S4C International Exhibition of Photography**  
**PID Color General**



**“DU ROCHER AU BORD DE MER”  
© SERGE VALLON  
2018 S4C International Exhibition of Photography  
PID Color General**



**“GRAND ESCALIER COLIMAÇON”**  
**© SERGE VALLON**  
**2018 S4C International Exhibition of Photography**  
**PID Color General**



**“VILLAGE ANCIEN EGUISHEIM”**  
**© SERGE VALLON**  
**2018 S4C International Exhibition of Photography**  
**PID Color General**



**“VINTAGE”**  
**© THOMAS VAN LANGENHOVEN**  
**2018 S4C International Exhibition of Photography**  
**PID Color General**



**“DUSK AT THE NORTH SEA”  
© INGE VAUTRIN  
2018 S4C International Exhibition of Photography  
PID Color General**



**“SHOWER OF COLORS”  
© INGE VAUTRIN  
2018 S4C International Exhibition of Photography  
PID Color General**



**“KRILL VIEW”**  
**© THOMAS VIJAYAN**  
**2018 S4C International Exhibition of Photography**  
**PID Color General**  
**HM**



**“SNOWY BEAR”**  
**© THOMAS VIJAYAN**  
**2018 S4C International Exhibition of Photography**  
**PID Color General**



**“EMERGING SUNFLOWER”**  
**© MIKE VOELTNER**  
**2018 S4C International Exhibition of Photography**  
**PID Color Theme - Flower(s)**

PID Color Page 320

<https://www.s4c-ex.org/>



**“HEART OF THE DAYLILY”  
© MIKE VOELTNER  
2018 S4C International Exhibition of Photography  
PID Color Theme - Flower(s)**



**“LAKE TRAHLYTA SHORELINE”  
© MIKE VOELTNER  
2018 S4C International Exhibition of Photography  
PID Color General**



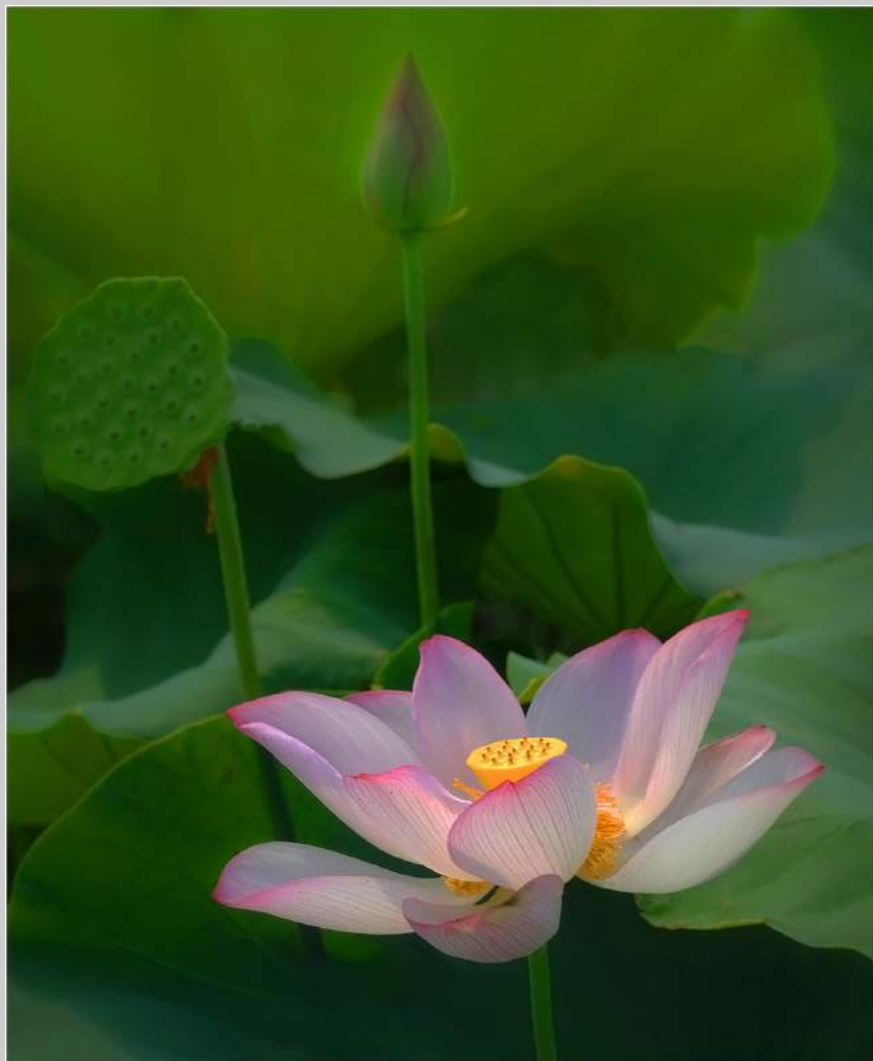
**“PURPLE IRIS”**  
**© MIKE VOELTNER**  
**2018 S4C International Exhibition of Photography**  
**PID Color Theme - Flower(s)**  
**HM**



**“KHAI REILY-LE BERGE”**  
**© ALAN WADE**  
**2018 S4C International Exhibition of Photography**  
**PID Color General**



**“GROTTO”**  
**© YI WAN, GMPSA**  
**2018 S4C International Exhibition of Photography**  
**PID Color General**



**“LOTUS10”**  
**© YI WAN, GMP SA**  
**2018 S4C International Exhibition of Photography**  
**PID Color Theme - Flower(s)**



**“GO TO SEA”  
© LI WANG  
2018 S4C International Exhibition of Photography  
PID Color General  
HM**

PID Color Page 327  
<https://www.s4c-ex.org/>



**“SET SAIL”**  
**© LI WANG**  
**2018 S4C International Exhibition of Photography**  
**PID Color General**



**“AKA VILLAGE24”**  
**© LUNG-TSAI WANG**  
**2018 S4C International Exhibition of Photography**  
**PID Color General**  
**HM**

PID Color Page 329

<https://www.s4c-ex.org/>



**“TEMPLE FAIR15”  
© LUNG-TSAI WANG  
2018 S4C International Exhibition of Photography  
PID Color General**



**“A BUNCH OF BEAUTIES”**  
**© JAMES WAT**  
**2018 S4C International Exhibition of Photography**  
**PID Color Theme - Flower(s)**



**“A FRUITFUL HEFT OF CATCH”**  
© JAMES WAT  
2018 S4C International Exhibition of Photography  
PID Color General



**“BEAUTIFUL ROSE MEANS YOU”**  
**© JAMES WAT**  
**2018 S4C International Exhibition of Photography**  
**PID Color Theme - Flower(s)**  
**HM**



**“HIMALAYA IN MORNING NEPAL”**  
**© JAMES WAT**  
**2018 S4C International Exhibition of Photography**  
**PID Color General**



**“AMAZING COLORS”**  
**© TINA WAYCIE**  
**2018 S4C International Exhibition of Photography**  
**PID Color General**



**“CANOLA FLOWER FIELD”**  
© TINA WAYCIE  
2018 S4C International Exhibition of Photography  
PID Color General



**“CANYONLANDS, UTAH”  
© TINA WAYCIE  
2018 S4C International Exhibition of Photography  
PID Color General  
Chair’s Award - GPU**

PID Color Page 337

<https://www.s4c-ex.org/>



**“DEATH VALLEY MORNING 3126”  
© JOHN WHITE  
2018 S4C International Exhibition of Photography  
PID Color General**



**“HIBISCUS TRIO 0733”  
© JOHN WHITE  
2018 S4C International Exhibition of Photography  
PID Color Theme - Flower(s)**

PID Color Page 339  
<https://www.s4c-ex.org/>



**"LILY 2576"**  
**© JOHN WHITE**  
**2018 S4C International Exhibition of Photography**  
**PID Color Theme - Flower(s)**  
**HM**



**“MT HOOD SUNRISE”  
© JOHN WHITE  
2018 S4C International Exhibition of Photography  
PID Color General**



**“PALOUSE RIVER 2632”  
© JOHN WHITE  
2018 S4C International Exhibition of Photography  
PID Color General**

PID Color Page 342  
<https://www.s4c-ex.org/>



**“TULIPS AND CRYSTAL BALL 3512”**  
**© JOHN WHITE**  
**2018 S4C International Exhibition of Photography**  
**PID Color Theme - Flower(s)**



**“ANGEL'S TRUMPET IN COLOR”**  
**© LARRY WHITE**  
**2018 S4C International Exhibition of Photography**  
**PID Color Theme - Flower(s)**



**“BUBBLES LADY”**  
**© LARRY WHITE**  
**2018 S4C International Exhibition of Photography**  
**PID Color General**



**“ROBERTS COTTAGES”**  
**© LARRY WHITE**  
**2018 S4C International Exhibition of Photography**  
**PID Color General**



**“THE TULIP”**  
**© LARRY WHITE**  
**2018 S4C International Exhibition of Photography**  
**PID Color Theme - Flower(s)**  
**HM**



**“TESS 5”**  
**© DAVE WHITSON, APSA, PPSA**  
**2018 S4C International Exhibition of Photography**  
**PID Color General**



**“ICEBERG IN GREENLAND 1236”  
© DAVID WILKINS  
2018 S4C International Exhibition of Photography  
PID Color General**

PID Color Page 349

<https://www.s4c-ex.org/>



**“MRS PICKWICK”  
© RON WILLEMS  
2018 S4C International Exhibition of Photography  
PID Color General**



**“UNDER SIEGE”  
© RON WILLEMS  
2018 S4C International Exhibition of Photography  
PID Color General**



**“BLUE EYED BEAUTY”  
© DORINDA WILLS, QPSA  
2018 S4C International Exhibition of Photography  
PID Color General**



**"NEW LIFE"**  
**© DORINDA WILLS, QPSA**  
**2018 S4C International Exhibition of Photography**  
**PID Color General**



**“CATHEDRAL OF PINES”**  
**© KATHLEEN WOLLEAT**  
**2018 S4C International Exhibition of Photography**  
**PID Color General**

PID Color Page 354

<https://www.s4c-ex.org/>



**“FROZEN”**  
**© KATHLEEN WOLLEAT**  
**2018 S4C International Exhibition of Photography**  
**PID Color General**  
**HM**

PID Color Page 355

<https://www.s4c-ex.org/>



**“FROM THE SKY”**  
**© GODFREY WONG, GMP SA**  
**2018 S4C International Exhibition of Photography**  
**PID Color General**



**"NEED MORE PRACTICE"**  
**© GODFREY WONG, GMP SA**  
**2018 S4C International Exhibition of Photography**  
**PID Color General**

PID Color Page 357

<https://www.s4c-ex.org/>



**“STRUGGLING 2”**  
**© GODFREY WONG, GMPA**  
**2018 S4C International Exhibition of Photography**  
**PID Color General**



**“LAOS12”**  
**© LORETTA YAT WONG**  
**2018 S4C International Exhibition of Photography**  
**PID Color General**



**“THE NENETS CAMPSITE11”**  
**© LORETTA YAT WONG**  
**2018 S4C International Exhibition of Photography**  
**PID Color General**

PID Color Page 360

<https://www.s4c-ex.org/>



**“MISTY MORNING FISHING”  
© ANNE WOODINGTON  
2018 S4C International Exhibition of Photography  
PID Color General**

PID Color Page 361

<https://www.s4c-ex.org/>



**“SNOWSTORM APPROACHING”**  
**© ANNE WOODINGTON**  
**2018 S4C International Exhibition of Photography**  
**PID Color General**

PID Color Page 362

<https://www.s4c-ex.org/>



**“SURVIVE”**  
**© XIAOMEI XU, MPSA**  
**2018 S4C International Exhibition of Photography**  
**PID Color General**



**“THE THREE MUSKETEERS”**  
© XIAOMEI XU, MPSA  
2018 S4C International Exhibition of Photography  
PID Color General



**“OMO RIVER VALLEY10”**  
**© BIN YAN**  
**2018 S4C International Exhibition of Photography**  
**PID Color General**

PID Color Page 365  
<https://www.s4c-ex.org/>



**“OMO RIVER VALLEY3”**  
**© BIN YAN**  
**2018 S4C International Exhibition of Photography**  
**PID Color General**



**“THE AFRICAN CHILDREN9”  
© BIN YAN  
2018 S4C International Exhibition of Photography  
PID Color General**

PID Color Page 367  
<https://www.s4c-ex.org/>



**“NENETS CHILD6”  
© DANLEI YE  
2018 S4C International Exhibition of Photography  
PID Color General**



**“SICHUAN TEAHOUSE7”  
© DANLEI YE  
2018 S4C International Exhibition of Photography  
PID Color General**



**“THE GREAT WALL3”  
© XIAOQI ZHANG  
2018 S4C International Exhibition of Photography  
PID Color General**

PID Color Page 370  
<https://www.s4c-ex.org/>



**“MOONLIGHT BEAUTY”  
© HANJU ZHU  
2018 S4C International Exhibition of Photography  
PID Color General**

PID Color Page 371  
<https://www.s4c-ex.org/>